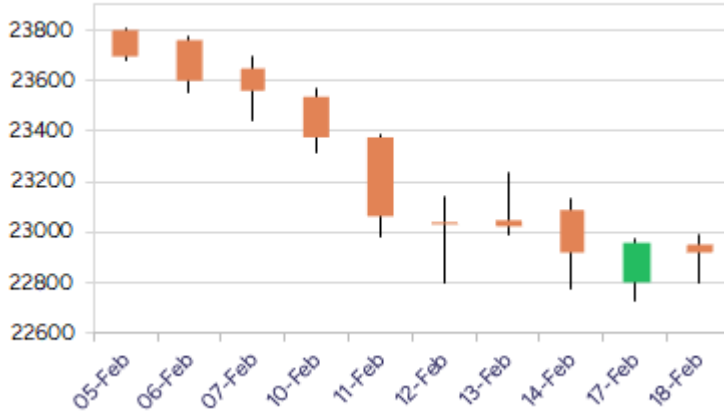


* Sensex 75967.39 **-29.47**

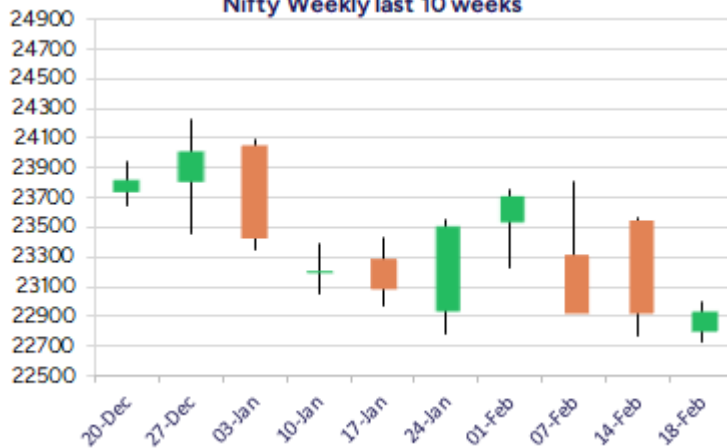
* Nifty 22945.30 **-14.20**

* Bank Nifty 49087.30 **-171.60**

Nifty daily last 10 days



Nifty Weekly last 10 weeks



*Blue candle → Close rate > Open rate * Red candle → Close rate < Open rate

Market Preview

Nifty gripped near 23000 zone

Nifty has been witnessing tough barrier near 23000 zone whereas also sustaining the crucial support at 22800 level for quite some time with bias and sentiment precariously placed. BankNifty has been sluggish near the 49000 and would need a decisive breach above the 50000 zone to confirm a breakout. The market breadth has been weak with the advance decline indicating 2:5 ratio at close.

Market Forecast

Nifty daily range 22800-23200

Nifty once again managed to recover from the 22800 zone during the intraday session to close on a flat note and has been moving sideways in the last 2 sessions between 22800 and 23000 zone with overall bias maintained with a cautious approach. There has been now 3 to 4 attempts witnessed to breach below the 22800 zone but has failed which has kept the hopes alive to anticipate for further rise in the coming days. BankNifty, was overall sluggish hovering near the 49000 zone and with the indices with no clear direction in the past 3-4 session is having a tough time to establish conviction and clarity. As mentioned earlier, the index needs to sustain the near-term support zone of 48500 level and on the upside, a decisive close above the 50EMA level of 50000 is necessary to get some conviction for further rise in the coming days.

The support for the day is seen at 22800 levels while the resistance is seen at 23200 levels. BankNifty would have the daily range of 48600-49600 levels.

Indices	Period	Closing	% Chng	Trend	Reversal	2 Sup	1 Sup	Pivot	1 Res	2 Res
Nifty	Daily	22945.30	-0.06%	-7	22996.95	22722	22834	22913	23025	23104
	Weekly	22929.25	-2.68%	-1	23209.30	22297	22613	23091	23407	23885
	Monthly	23508.40	-0.58%	-4	26209.65	22068	22788	23507	24228	24947
Bank Nifty	Daily	49087.30	-0.35%	-7	49287.45	48563	48825	49077	49339	49591
	Weekly	49099.45	-2.11%	-1	49065.75	47889	48494	49325	49930	50761
	Monthly	49587.20	-2.50%	-4	53427.15	45873	47730	49701	51559	53530
Sensex	Daily	75967.39	-0.04%	-7	76122.30	75303	75635	75863	76196	76424
	Weekly	75939.21	-2.47%	-1	76750.60	73931	74935	76392	77396	78854
	Monthly	77500.57	-0.82%	-4	85623.60	72808	75154	77614	79960	82419

Daily Trend turned Up

Scrip Name	LCP	Curr Trnd	Reversal
APOLLOHOSP	6376.85	-7	6350.8
BAJFINANCE	8465.9	-6	8422.1
CEATLTD	2702.45	-8	2658.15
GAIL	164.07	-7	161.25
GODREJPROP	1975.85	-8	1963.45
HCLTECH	1725.5	-3	1711.75
LTI	5668.6	-6	5615
MGL	1301.4	-6	1294.35
MOTHERSUMI	128.36	-5	127.15
NTPC	311.2	-6	303.9
TECHMAHINDRA	1705	-3	1674.65
WIPRO	312.2	-5	310.3

* Trends turned Up after a significant period

Daily Trend turned Down

Scrip Name	LCP	Curr Trnd	Reversal
APOLLOTYRE	412.1	3	412.3
ASIANPAINT	2237.6	1	2240.1
BALRAMCHIN	430.85	1	432.35
BRITANNIA	4891.2	2	4906.85
CHAMBLFERT	537	1	542.35
TATAMOTORS	682.4	1	682.65

* Trends turned Down after a significant period

Gainers - Losers (Nifty 500 Stocks)
Gainers

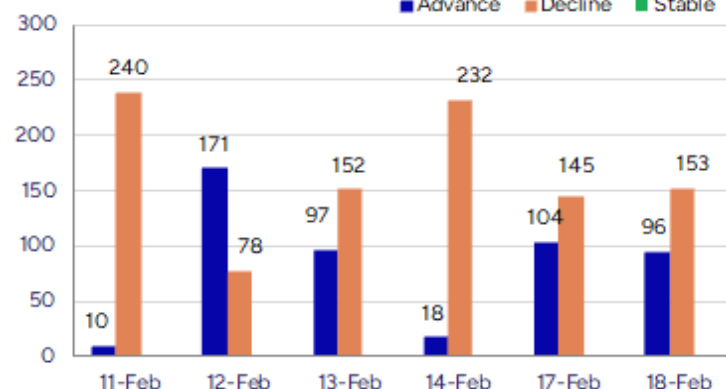
Scrip Name	LCP	% Change	Volume
Total Transport	75.52	19.93	360251
AION-TECH	66.24	18.14	198923
Mitcon Cons	94.2	17.47	78893
OneClick	141.8	14.72	151200
Sikko Industrie	81.85	11.91	791620
Gillette India	8229.85	10.44	1300296
BSL	171.24	9.36	178844

Losers

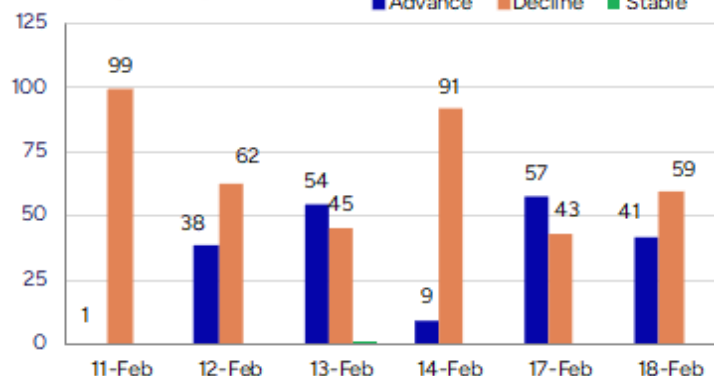
Scrip Name	LCP	% Change	Volume
Onelife Capital	10.37	-20.05	90989
Kabra Jewels	132.3	-16.58	451000
Nitiraj Enginee	257.23	-15.11	151812
Excellent Wire	53	-14.24	8000
B&B Triplewall	150.85	-12.08	12025
JHS Svendgaard	13.43	-12.05	737639
Lancor Holdings	21.61	-11.98	213536

Nifty Smallcap-250 stocks

■ Advance ■ Decline ■ Stable


Nifty Midcap-100 stocks

■ Advance ■ Decline ■ Stable



Nifty Daily chart with RSI indicator



BankNifty Daily chart with RSI indicator



Breakouts - Cross above 200 DMA

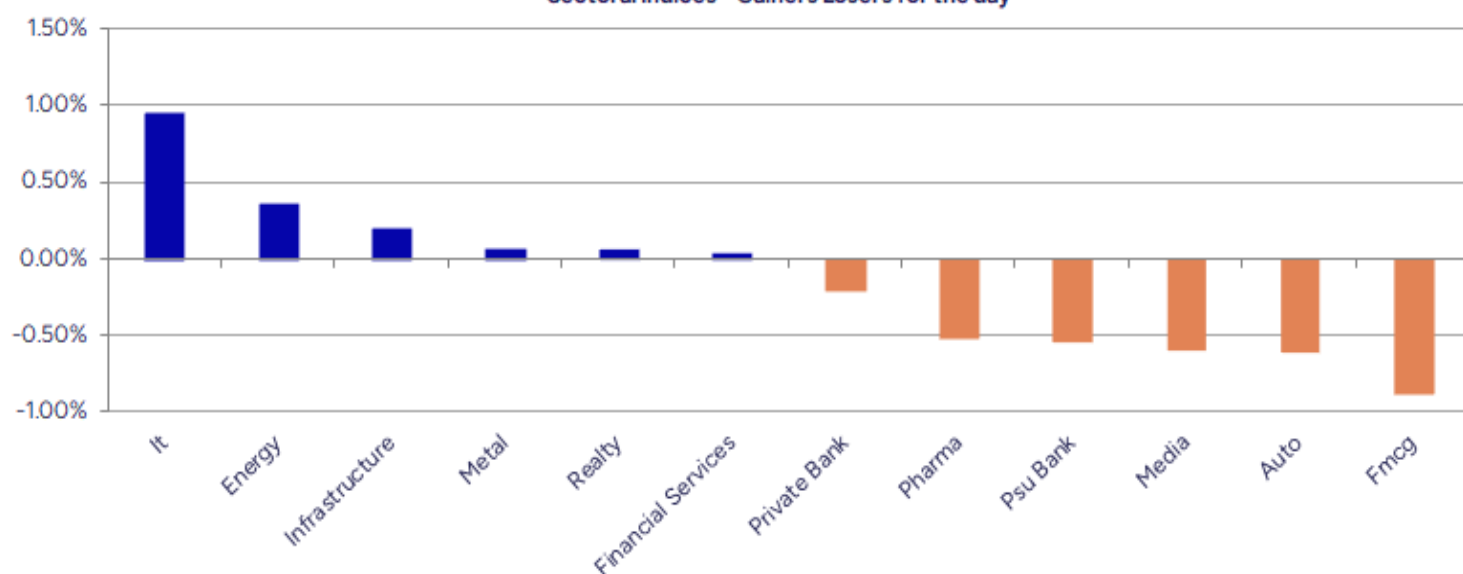
Company Name	LCP	Change %	200 DMA
Time Techno	408	7.36	380.04
GlaxoSmithKline	2536.85	1.77	2492.83
Info Edge	7558.9	1.63	7437.61
Star Cement	214.05	1.43	211.04
Kanpur Plast	119.18	0.87	118.15
Bliss GVS	131.09	0.70	130.18
TCI Finance	13.15	0.46	13.09

Breakdown - Cross below 200 DMA

Company Name	LCP	Change %	200 DMA
Pennar Inds	157.58	-5.06	176.44
Epigral	1703.35	-5.04	1790.84
Zodiac Energy	413.25	-5.02	593.6
DCM	98.41	-4.11	94.24
Suryoday Small	121.13	-3.23	167.78
CreditAccess Gr	962.9	-3.21	1145.68
Blue Star	1872.55	-3.00	1815.99
Indian Hume	319.45	-2.86	416.66
Inox Wind Energ	8896.9	-2.36	9736.61
Greaves Cotton	256.8	-2.36	186.94
Indo Count	305.1	-2.34	367
Campus	271.35	-2.03	290.75
Sky Gold	350.35	-1.86	277.11
GNFC	545.25	-1.84	635.22
MTNL	46.83	-1.62	50.94
Manappuram Fin	189.33	-1.56	188.12
Gabriel India	450.7	-1.50	463.11
Nandani Creatio	43.61	-1.45	41.69

* Stocks crossing above its Simple Moving Average (200DMA)

* Stocks crossing below its Simple Moving Average (200DMA)

Sectoral Indices - Gainers Losers for the day


Stocks witnessing a volume surge as compared to their 5 day average volur

Watch out for the stocks that have seen a huge spurt in its share price over the last three days

Volume Shockers - NSE					
Company name	LCP	% Chg	Volume	Avg Vol *	% Chg
GlaxoSmithKline	2536.85	8.4	4767565	119715	3882
Sandur Manganes	436.1	5.19	4484145	130587	3334
ABB India	5142.05	-1.9	3924895	241490	1525
Sah Polymers	70.87	-3.43	689960	42472	1525
Gillette India	8229.85	10.44	1300296	96315	1250
Krishna Institu	545.1	-2.88	649058	59456	992
Godfrey Phillip	6842.8	-2.77	3104563	292984	960
Techno Electric	906	-1.48	850932	88472	862
TVS Supply	132.61	3.89	19162211	2102593	811
Zen Tech	972	-10	6156201	702712	776
HEG	343.25	0.99	617557	80062	671
Mahindra Logist	280.9	-7.89	515992	67500	664
Jindal Drilling	846.55	-4.54	257779	34855	640
Borosil	318.25	-7.7	1583410	215932	633
Jai Balaji Ind	129.68	-4.46	384891	54390	608
Five-Star Busin	697.8	1.83	2083077	295334	605
Senco Gold	342.1	5.12	2047641	304379	573
MBL Infra	42.28	-6.15	429292	65421	556
Amber Enterpris	5514.25	-4.6	1257883	193891	549
Transformers	367.45	-3.98	855356	131705	549

* the Average Volume of last 5 days

Price Shockers - NSE					
Company name	LCP	3 days *	% Chg	Volume	
Sandur Manganes	436.1	345.5	26.22	4484145	
GlaxoSmithKline	2536.85	2018	25.71	4767565	
Reliable Data S	82.12	67.69	21.32	506740	
NLC India	226.87	194.28	16.77	12919647	
Sikko Industrie	81.85	70.33	16.38	791620	
AION-TECH	66.24	57.27	15.66	198923	
Godfrey Phillip	6842.8	5999.5	14.06	3104563	
Total Transport	75.52	66.86	12.95	360251	
Nacl Industries	65.19	57.87	12.65	381005	
Time Techno	408	364.05	12.07	2470079	
Euro Panel	178.9	162	10.43	5000	
Kaya	273.1	247.45	10.37	20599	
Norben Tea	40.27	36.54	10.21	3913	
Indian Hume	319.45	290	10.16	104450	

* the % price rise of the last 3 days

Nifty 50 stocks - Summary Details

Symbol	LTP	Chng	% Chng	Volume (lacs)	Turnover (crs.)	52w High	Diff with 52w H	52w Low	Diff with 52w L	365 days % chng	30 days % chng
NIFTY 50	22945.30	-14.20	-0.06%	2106.17	19431	26277	12.68%	21281	7.82%	-1.11%	4.10%
ADANIANT	2213.05	-10.65	-0.48%	11.38	250	3744	40.89%	2025	9.29%	-7.48%	-31.12%
ADANI PORTS	1083.50	0.60	0.06%	17.15	185	1621	33.18%	996	8.82%	-6.73%	-16.96%
APOLLOHOSP	6358.00	57.80	0.92%	2.20	140	7545	15.74%	5693	11.68%	-6.61%	-3.39%
ASIANPAINT	2232.65	-18.20	-0.81%	7.36	164	3395	34.24%	2186	2.15%	-1.03%	-25.61%
AXISBANK	994.90	1.95	0.20%	30.90	307	1340	25.73%	934	6.58%	0.31%	-6.98%
BAJAJ-AUTO	8445.80	-91.35	-1.07%	2.06	174	12774	33.88%	7890	7.04%	-1.57%	1.46%
BAJAJFINSV	1889.20	-5.65	-0.30%	21.17	402	2030	6.93%	1419	33.13%	12.68%	20.17%
BAJFINANCE	8450.00	23.40	0.28%	8.69	733	8663	2.46%	6188	36.56%	17.87%	27.90%
BEL	243.80	-4.70	-1.89%	211.80	516	341	28.40%	179	36.13%	-13.31%	29.90%
BHARTIARTL	1669.50	-6.05	-0.36%	75.30	1257	1779	6.16%	1098	52.10%	2.54%	49.01%
BPCL	252.20	-0.10	-0.04%	55.34	139	376	32.93%	242	4.13%	-7.62%	-61.39%
BRITANNIA	4880.00	-83.70	-1.69%	3.14	154	6470	24.57%	4641	5.15%	0.76%	-0.46%
CIPLA	1482.00	7.35	0.50%	9.67	143	1702	12.93%	1317	12.51%	2.76%	2.87%
COALINDIA	360.00	-0.10	-0.03%	38.44	138	544	33.77%	349	3.08%	-6.85%	-24.77%
DRREDDY	1197.95	-1.00	-0.08%	17.14	205	1421	15.73%	1120	6.96%	-8.55%	-81.05%
EICHERMOT	4726.00	-19.20	-0.40%	2.54	120	5576	15.24%	3672	28.70%	-5.84%	20.13%
GRASIM	2445.05	-18.80	-0.76%	5.96	145	2878	15.04%	2102	16.31%	3.68%	16.98%
HCLTECH	1725.00	15.10	0.88%	15.12	260	2012	14.27%	1235	39.68%	-3.54%	3.48%
HDFCBANK	1723.00	5.65	0.33%	81.75	1407	1880	8.35%	1397	23.31%	5.27%	21.35%
HDFCLIFE	618.70	-4.55	-0.73%	18.88	116	761	18.72%	511	20.98%	-3.62%	4.47%
HEROMOTOCO	3845.00	-31.45	-0.81%	4.82	185	6246	38.44%	3758	2.32%	-6.28%	-21.53%
HINDALCO	609.00	-1.85	-0.30%	29.57	180	773	21.18%	499	22.04%	-0.90%	18.57%
HINDUNILVR	2297.50	-31.90	-1.37%	10.36	239	3035	24.30%	2172	5.78%	-2.46%	-3.34%
ICICIBANK	1242.55	-8.60	-0.69%	81.35	1011	1362	8.79%	1023	21.42%	1.44%	21.48%
INDUSINDBK	1022.10	-26.15	-2.49%	26.21	270	1576	35.16%	924	10.65%	5.47%	-31.44%
INFY	1848.00	5.70	0.31%	43.65	807	2006	7.90%	1358	36.05%	2.01%	8.83%
ITC	404.90	-3.70	-0.91%	129.98	528	529	23.39%	399	1.39%	-7.94%	0.16%
JSWSTEEL	975.60	2.05	0.21%	18.00	175	1063	8.22%	762	28.07%	7.73%	19.37%
KOTAKBANK	1962.25	16.95	0.87%	43.44	849	1993	1.53%	1544	27.10%	11.64%	13.15%
LT	3220.00	-1.85	-0.06%	24.28	780	3964	18.76%	3175	1.42%	-9.77%	-4.92%
M&M	2780.95	-51.00	-1.80%	23.02	642	3271	14.98%	1789	55.46%	-4.36%	52.00%
MARUTI	12778.00	15.10	0.12%	2.68	343	13680	6.59%	10725	19.14%	5.35%	12.35%
NESTLEIND	2215.55	-0.95	-0.04%	4.53	100	2778	20.25%	2131	3.96%	0.23%	-10.66%
NTPC	312.00	9.65	3.19%	157.93	484	448	30.43%	293	6.56%	-4.58%	-7.86%
ONGC	236.00	2.35	1.01%	61.71	145	345	31.59%	223	5.83%	-11.24%	-13.87%
POWERGRID	265.55	2.35	0.89%	104.84	277	366	27.49%	252	5.29%	-11.78%	-2.77%
RELIANCE	1223.95	-0.95	-0.08%	66.73	817	1609	23.92%	1193	2.56%	-5.91%	-58.05%
SBILIFE	1475.00	-1.20	-0.08%	6.79	100	1936	23.81%	1308	12.79%	-4.23%	-2.19%
SBIN	725.50	-2.20	-0.30%	85.62	620	912	20.45%	712	1.96%	-5.01%	-3.83%
SHRIRAMFIN	551.50	1.15	0.21%	29.89	164	730	24.50%	439	25.74%	5.10%	-77.41%
SUNPHARMA	1699.95	-14.25	-0.83%	21.64	370	1960	13.28%	1377	23.44%	-4.75%	12.69%
TATA CONSUM	1025.45	2.20	0.22%	7.90	81	1256	18.38%	883	16.15%	7.60%	-10.50%
TATA MOTORS	682.50	-4.10	-0.60%	78.10	530	1179	42.11%	667	2.32%	-12.48%	-27.30%
TATA STEEL	134.16	-0.13	-0.10%	239.58	319	185	27.32%	123	9.41%	3.27%	-5.45%
TCS	3873.00	-31.50	-0.81%	21.50	837	4592	15.66%	3592	7.84%	-6.09%	-6.18%
TECHM	1701.00	36.05	2.17%	26.54	449	1808	5.90%	1163	46.27%	2.69%	30.90%
TITAN	3219.00	-14.20	-0.44%	5.93	191	3867	16.76%	3056	5.35%	-4.04%	-11.86%
TRENT	4986.00	-110.45	-2.17%	7.21	360	8345	40.25%	3750	32.95%	-19.61%	24.18%
ULTRACEMCO	11283.05	-207.05	-1.80%	2.69	304	12145	7.10%	9250	21.98%	6.89%	14.04%
WIPRO	311.50	6.15	2.01%	103.69	321	325	4.04%	209	49.40%	10.73%	-42.50%

Disclaimer / Disclosures

ANALYST CERTIFICATION

I, Mrs. Vaishali Parekh B.com, Research Analyst, author and the name subscribed to this report, hereby certify that all of the views expressed in this research report accurately reflect our views about the subject issuer(s) or securities. We also certify that no part of our compensation was, is, or will be directly or indirectly related to the specific recommendation(s) or view(s) in this report.

Terms & conditions and other disclosures:

Prabhudas Lilladher Pvt. Ltd, Mumbai, India (hereinafter referred to as "PL") is engaged in the business of Stock Broking, Portfolio Manager, Depository Participant and distribution for third party financial products. PL is a subsidiary of Prabhudas Lilladher Advisory Services Pvt Ltd. which has its various subsidiaries engaged in business of commodity broking, investment banking, financial services (margin funding) and distribution of third party financial/other products, details in respect of which are available at www.plindia.com

This document has been prepared by the Research Division of PL and is meant for use by the recipient only as information and is not for circulation. This document is not to be reported or copied or made available to others without prior permission of PL. It should not be considered or taken as an offer to sell or a solicitation to buy or sell any security.

The information contained in this report has been obtained from sources that are considered to be reliable. However, PL has not independently verified the accuracy or completeness of the same. Neither PL nor any of its affiliates, its directors or its employees accepts any responsibility of whatsoever nature for the information, statements and opinion given, made available or expressed herein or for any omission therein.

Recipients of this report should be aware that past performance is not necessarily a guide to future performance and value of investments can go down as well. The suitability or otherwise of any investments will depend upon the recipient's particular circumstances and, in case of doubt, advice should be sought from an independent expert/advisor.

Either PL or its affiliates or its directors or its employees or its representatives or its clients or their relatives may have position(s), make market, act as principal or engage in transactions of securities of companies referred to in this report and they may have used the research material prior to publication.

PL may from time to time solicit or perform investment banking or other services for any company mentioned in this document.

PL is registered as Research Analyst under Securities and Exchange Board of India (Research Analysts) Regulations, 2014 PL submits that no material disciplinary action has been taken on us by any Regulatory Authority impacting Equity Research Analysis activities.

PL or its research analysts or its associates or his relatives do not have any financial interest in the subject company.

PL or its research analysts or its associates or his relatives do not have actual/beneficial ownership of one per cent or more securities of the subject company at the end of the month immediately preceding the date of publication of the research report.

PL or its research analysts or its associates or his relatives do not have any material conflict of interest at the time of publication of the research report.

PL or its associates might have received compensation from the subject company in the past twelve months.

PL or its associates might have managed or co-managed public offering of securities for the subject company in the past twelve months or mandated by the subject company for any other assignment in the past twelve months.

PL or its associates might have received any compensation for investment banking or merchant banking or brokerage services from the subject company in the past twelve months.

PL or its associates might have received any compensation for products or services other than investment banking or merchant banking or brokerage services from the subject company in the past twelve months PL or its associates might have received any compensation or other benefits from the subject company or third party in connection with the research report.

PL encourages independence in research report preparation and strives to minimize conflict in preparation of research report. PL or its analysts did not receive any compensation or other benefits from the subject Company or third party in connection with the preparation of the research report. PL or its Research Analysts do not have any material conflict of interest at the time of publication of this report.

It is confirmed that Mrs.Vaishali Parekh B.com, Research Analyst of this report has not received any compensation from the companies mentioned in the report in the preceding twelve months compensation of our Research Analysts is not based on any specific merchant banking, investment banking or brokerage service transactions.

The Research analysts for this report certifies that all of the views expressed in this report accurately reflect his or her personal views about the subject company or companies and its or their securities, and no part of his or her compensation was, is or will be, directly or indirectly related to specific recommendations or views expressed in this report.

The research analysts for this report has not served as an officer, director or employee of the subject company PL or its research analysts have not engaged in market making activity for the subject company

Our sales people, traders, and other professionals or affiliates may provide oral or written market commentary or trading strategies to our clients that reflect opinions that are contrary to the opinions expressed herein, and our proprietary trading and investing businesses may make investment decisions that are inconsistent with the recommendations expressed herein. In reviewing these materials, you should be aware that any or all of the foregoing, among other things, may give rise to real or potential conflicts of interest.

PL and its associates, their directors and employees may (a) from time to time, have a long or short position in, and buy or sell the securities of the subject company or (b) be engaged in any other transaction involving such securities and earn brokerage or other compensation or act as a market maker in the financial instruments of the subject company or act as an advisor or lender/borrower to the subject company or may have any other potential conflict of interests with respect to any recommendation and other related information and opinions.