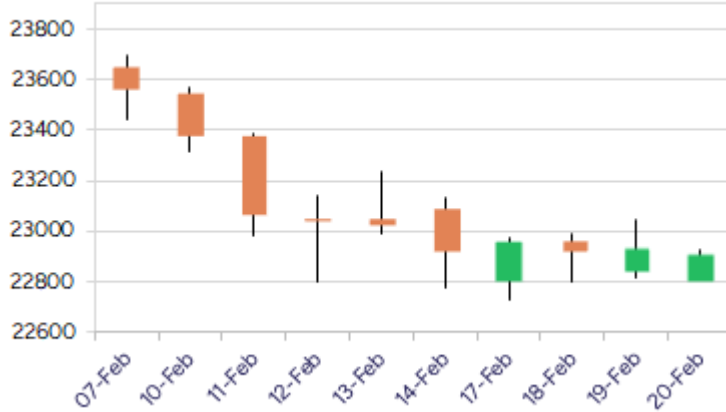


* Sensex 75735.96 -203.32

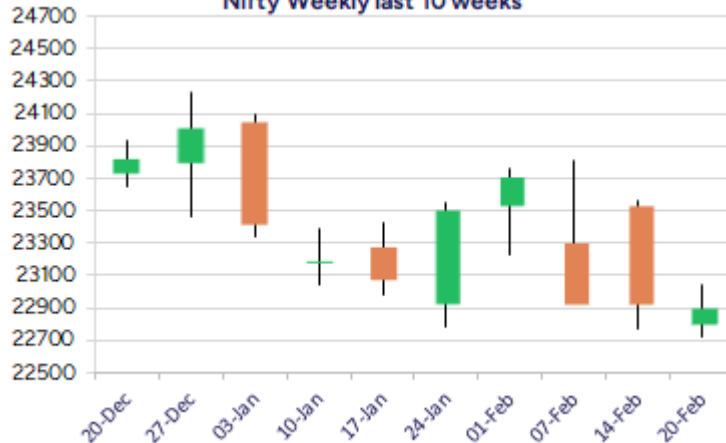
* Nifty 22913.15 -19.75

* Bank Nifty 49334.55 -235.55

Nifty daily last 10 days



Nifty Weekly last 10 weeks



*Blue candle → Close rate > Open rate * Red candle → Close rate < Open rate

Market Preview

Nifty continues to remain sluggish

Nifty continue to witness rangebound session gripped between the tight range of 22800 and 23000 zone with no clear direction for some time. BankNifty had a dull session losing 235 points and closed near the 23300 level with bias and sentiment maintained with a cautiously positive approach. The market breadth once again was strong with the advance decline ratio indicating 3:1 at close.

Market Forecast

Nifty daily range 22800-23200

Nifty continues to hover between a very narrow range since quite some time between 22800 and 23000 zone with 22800 level sustained as of now which is a positive sign to keep hopes alive for fresh upward move in the coming days. We continue to maintain our stance, as said earlier, only a decisive move past the 23350 zone shall confirm a positive breakout above the descending channel pattern on the daily chart which shall establish conviction for further rise in the coming days.

BankNifty, visibly with a lack lustre session ended in the red near 49300 zone with near-term support maintained near the 48500 level and on the upside, as mentioned earlier, the index would need a decisive close above the 50EMA level of 50000 to establish conviction and thereafter, expect for fresh upward move with targets of 51700 and 52500 levels visible in the coming days.

The support for the day is seen at 22800 levels while the resistance is seen at 23200 levels. BankNifty would have the daily range of 49000-50000 levels.

Indices	Period	Closing	% Chng	Trend	Reversal	2 Sup	1 Sup	Pivot	1 Res	2 Res
Nifty	Daily	22913.15	-0.09%	-9	22936.40	22772	22843	22883	22954	22994
	Weekly	22929.25	-2.68%	-1	23209.30	22297	22613	23091	23407	23885
	Monthly	23508.40	-0.58%	-4	26209.65	22068	22788	23507	24228	24947
Bank Nifty	Daily	49334.55	-0.48%	2	49246.00	49009	49172	49314	49477	49619
	Weekly	49099.45	-2.11%	-1	49065.75	47889	48494	49325	49930	50761
	Monthly	49587.20	-2.50%	-4	53427.15	45873	47730	49701	51559	53530
Sensex	Daily	75735.96	-0.27%	-9	75877.30	75333	75535	75664	75866	75995
	Weekly	75939.21	-2.47%	-1	76750.60	73931	74935	76392	77396	78854
	Monthly	77500.57	-0.82%	-4	85623.60	72808	75154	77614	79960	82419

Daily Trend turned Up

Scrip Name	LCP	Curr Trnd	Reversal
ABB	5344.65	-7	5195.65
BAJAJ AUTO	8630.2	-8	8539.9
CANBK	88.06	-7	85.9
CASTROLIND	213.96	-4	208.65
COLPAL	2481.85	-13	2464.4
GODREJCP	1074.6	-11	1029.75
HAVELLS	1528.55	-8	1510.95
HEROMOTOCO	3909.1	-10	3883.75
HUDCO	188.52	-10	183.3
CUMMINS	2818.6	-6	2727.45
M&MFIN	280.5	-7	275.95
METROPOLIS	1678.1	-6	1669.95

* Trends turned Up after a significant period

Daily Trend turned Up

Scrip Name	LCP	Curr Trnd	Reversal
NAM-INDIA	536.3	-7	519.35
NBCC	82.71	-10	80.85
OIL	405.65	-5	400.85
PEL	953.35	-8	932.2
PIDILITIND	2821.5	-11	2786.6
PNB	95.65	-8	92.6
SPARC	135.25	-7	132.35
SRF	2795.9	-10	2786.8
TRENT	5099.5	-10	5050.3
TVSMOTOR	2419.25	-10	2407.5
VRLLG	481.9	-5	478.75
WABAG	1400.7	-4	1375.25

* Trends turned Up after a significant period

Gainers - Losers (Nifty 500 Stocks)

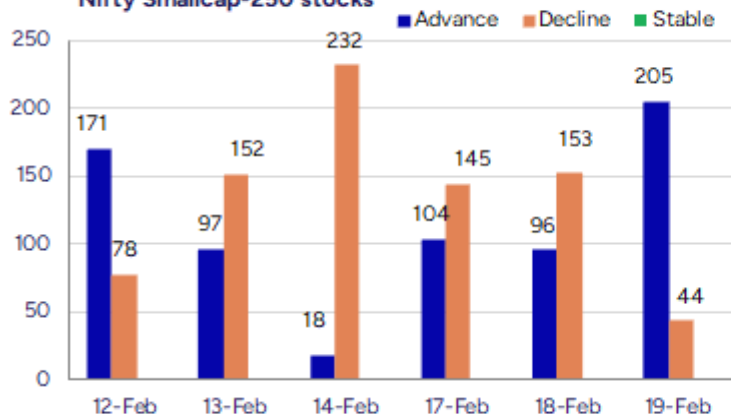
Gainers

Scrip Name	LCP	% Change	Volume
Hindprakash Ind	142.08	20	51036
Touchwood Enter	96.01	19.98	197072
Baazar Style	225.05	19.64	2831537
Windlas Biotech	797.9	18.15	770350
Godrej Ind	1011.75	17.46	5621678
ACE Integrated	25.83	16.98	33083
Prajay Engineer	23.54	16.94	775560

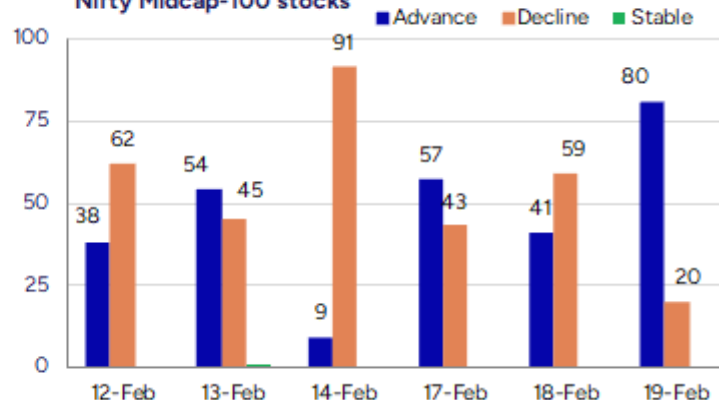
Losers

Scrip Name	LCP	% Change	Volume
KHFM HOSPITALIT	74.6	-11.77	74400
Paramatrix Tech	85	-10.53	6000
Godfrey Phillip	5966.6	-9.04	682502
Newjaisa Techno	62.6	-7.94	103500
Marvel Decor Lt	94.3	-7.73	23000
Vaidya Sane Ayu	107.85	-6.78	2000
TBI Corn	136.25	-6.65	115800

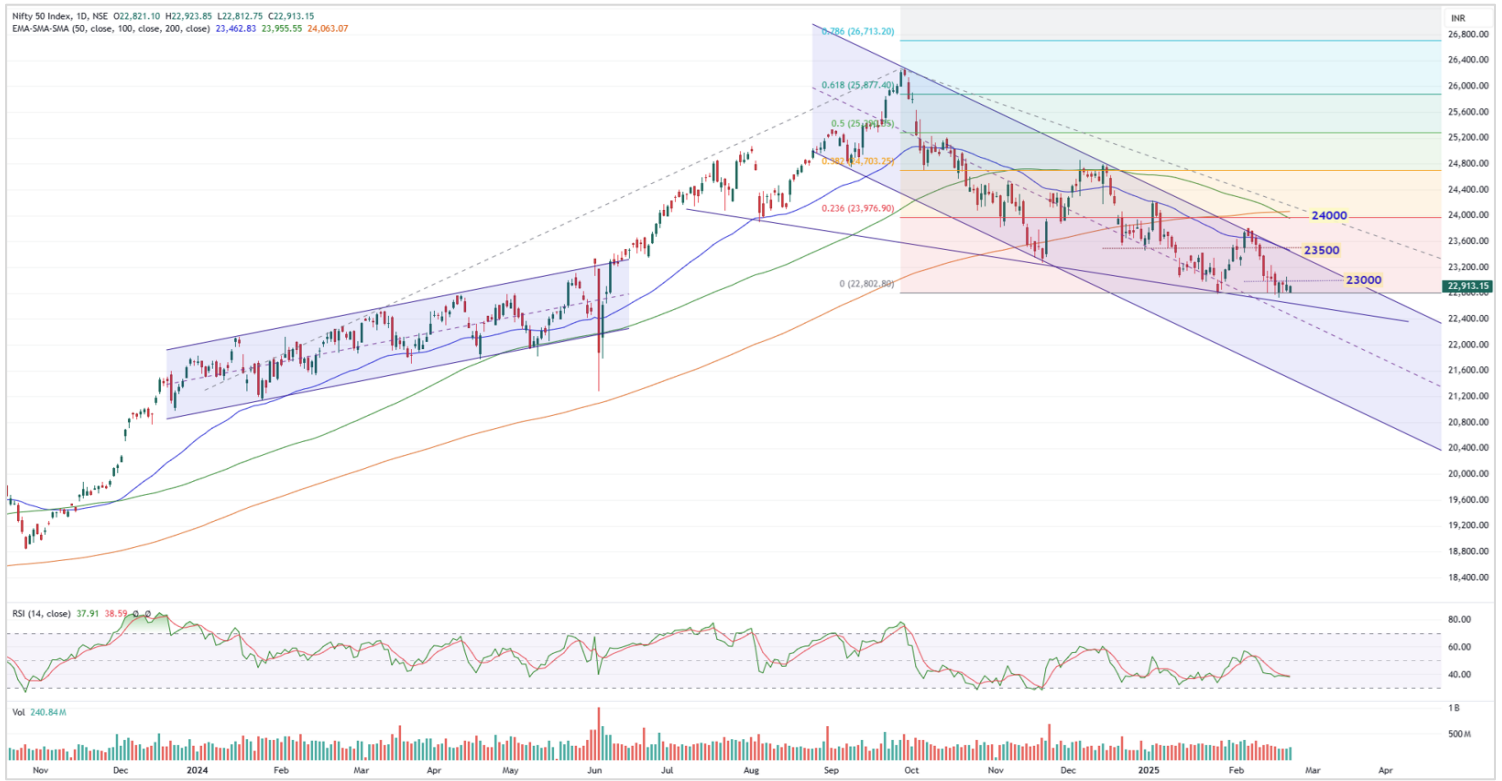
Nifty Smallcap-250 stocks



Nifty Midcap-100 stocks



Nifty Daily chart with RSI indicator



BankNifty Daily chart with RSI indicator



Breakouts - Cross above 200 DMA

Company Name	LCP	Change %	200 DMA
Radico Khaitan	2195.7	7.64	2039.81
Piramal Pharma	218.51	5.00	208.11
Stove	765.95	3.73	738.41
Godrej Ind	1011.75	3.66	976.07
Devyani	179.98	3.55	173.81
Ram Ratna Wires	539.65	3.29	522.45
Vasa Denticity	642.2	2.85	624.38
Lumax Auto Tech	557.1	2.06	545.86
Spectrum Talent	143	1.79	140.48
GMRP&UI	110.28	1.69	108.45
Entero Health	1300.65	1.61	1280.05
Kilitch Drugs	338.5	1.33	334.05
Karur Vysya	218.7	1.20	216.11
India Shelter	696.7	1.19	688.52
Global Vectra	264.05	1.18	260.98
Ipru Nifty PSU	61.14	1.12	60.46
Kalyani Forge	560.35	1.10	554.27
Nila Spaces	12.05	109.00%	11.92

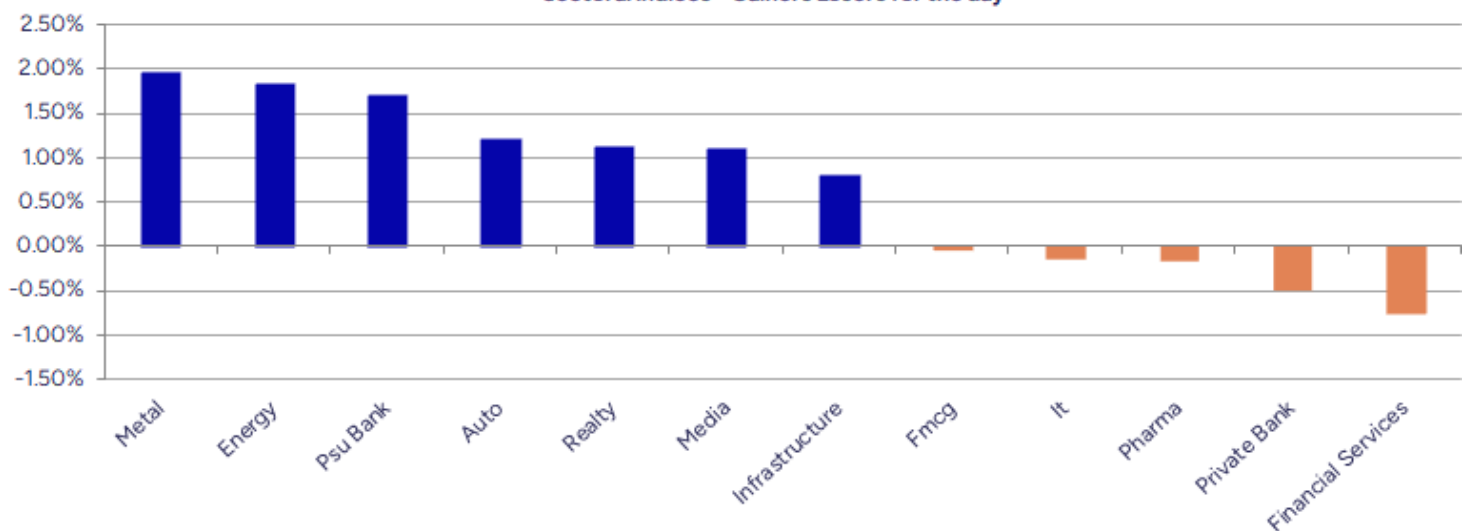
* Stocks crossing above its Simple Moving Average (200DMA)

Breakdown - Cross below 200 DMA

Company Name	LCP	Change %	200 DMA
TT	12.44	-4.53	13.03
Abhishek	55.95	-4.18	58.39
Zenithexpo	265.9	-4.16	277.43
Gufic Bio	383.55	-3.21	396.26
Prolife Industr	235	-2.57	241.19
Nacl Industries	60.3	-2.51	61.85
Shiva Texyarn	197.76	-2.10	202
EPL	235	-1.19	237.84
TCI Finance	13.1	-0.61	13.18
HCL Tech	1687.55	-0.57	1697.2
Star Cement	210.8	-0.04	210.88

* Stocks crossing below its Simple Moving Average (200DMA)

Sectoral Indices - Gainers Losers for the day



Stocks witnessing a volume surge as compared to their 5 day average volume

Volume Shockers - NSE					
Company name	LCP	% Chg	Volume	Avg Vol *	% Chg
Touchwood Enter	96.01	19.98	197072	3929	4916
Emkay Taps	396.95	4.35	73200	1560	4592
JBM Auto	609.7	-5.85	5208914	180877	2780
ISGEC Heavy Eng	933.05	-1.89	2629471	100286	2522
Windlas	797.9	18.15	770350	35427	2074
Piramal Pharma	218.51	9.03	52563145	2515762	1989
Taj GVK Hotels	463.3	-0.75	2915196	149887	1845
Parin Enter	369	4.83	69000	3600	1817
Deccan Cements	769	12.53	289530	15432	1776
Suven Pharma	1211.2	4.42	4459972	249599	1687
Archean Chem	449.45	7.73	5806727	333445	1641
Rajesh Exports	185.88	12.94	12160681	727771	1571
Linde India	6173.3	5.35	703657	43835	1505
Krishna Institu	542	0.88	919115	59456	1446
Jai Balaji Ind	140.09	6.81	839090	54390	1443
Dolphin Offshor	223.4	-5	30959	2253	1274
Aegis Logistics	729.25	-4.21	5033567	383595	1212
Godrej Ind	1011.75	17.46	5621678	443865	1167
Avonmore Cap	19.8	1.8	1254216	100846	1144
BEW Engineering	170	3.06	14000	1125	1144

* the Average Volume of last 5 days

Watch out for the stocks that have seen a huge spurt in its share price over the last three days

Price Shockers - NSE				
Company name	LCP	3 days *	% Chg	Volume
Hilton Metal	92.29	71.14	29.73	350785
AION-TECH	71.63	56.07	27.75	70269
KDDL	2707.1	2131.65	27	38487
Prajay Engineer	23.54	18.64	26.29	775661
Deccan Cements	769	614.9	25.06	289535
Veranda Learn	246.98	198.82	24.22	298034
Xtglobal	39.27	31.82	23.41	222966
Godrej Ind	1011.75	824.95	22.64	5621693
Total Transport	75.99	62.97	20.68	47759
Shree Rama News	27.13	22.52	20.47	1263696
Mangalam Organ	433.95	360.85	20.26	13836
Rajesh Exports	185.88	156.4	18.85	12167169
Panama Petro	365.3	309.6	17.99	268002
ACE Integrated	25.83	22.01	17.36	33583
Medicamen Bio	524.8	449.8	16.67	59626
Tourism Finance	150.72	129.21	16.65	743961
Tata Inv Corp	6087.25	5220.3	16.61	679953
Bigbloc Constru	72	61.92	16.28	940808
Taj GVK Hotels	463.3	398.7	16.2	2915261
Geekay Wires	84.82	73.16	15.94	146816

* the % price rise of the last 3 days

Nifty 50 stocks - Summary Details											
Symbol	LTP	Chng	% Chng	Volume (lacs)	Turnover (crs.)	52w High	Diff with 52w H	52w Low	Diff with 52w L	365 days % chng	30 days % chng
NIFTY 50	22913.15	-19.75	-0.09%	2407.85	21300.54	26277.35	12.80%	21281.45	7.67%	-1.76%	3.32%
ADANIENT	2178.00	-2.80	-0.13%	10.86	237.66	3743.90	41.83%	2025.00	7.56%	-10.73%	-32.45%
ADANIPTS	1110.00	27.15	2.51%	37.14	412.57	1621.40	31.54%	995.65	11.48%	-5.73%	-16.74%
APOLLOHOSP	6394.00	-28.65	-0.45%	1.65	106.03	7545.35	15.26%	5693.20	12.31%	-5.28%	-4.98%
ASIANPAINT	2247.90	8.80	0.39%	6.37	143.31	3394.90	33.79%	2185.70	2.85%	-1.82%	-25.65%
AXISBANK	1019.00	7.65	0.76%	50.11	508.55	1339.65	23.94%	933.50	9.16%	2.36%	-7.10%
BAJAJ-AUTO	8625.95	146.45	1.73%	1.89	162.26	12774.00	32.47%	7890.00	9.33%	-0.76%	2.22%
BAJAJFINSV	1881.45	6.10	0.33%	10.12	189.49	2029.90	7.31%	1419.05	32.59%	8.08%	17.00%
BAJFINANCE	8384.30	-55.15	-0.65%	7.90	663.54	8662.80	3.21%	6187.80	35.50%	13.43%	24.78%
BEL	260.15	6.75	2.66%	189.13	487.47	340.50	23.60%	179.10	45.25%	-11.34%	32.91%
BHARTIARTL	1647.00	1.80	0.11%	55.24	903.59	1779.00	7.42%	1097.65	50.05%	0.25%	43.82%
BPCL	258.55	2.95	1.15%	81.55	209.88	376.00	31.24%	242.20	6.75%	-7.83%	-61.13%
BRITANNIA	4833.00	-4.50	-0.09%	3.20	154.04	6469.90	25.30%	4641.00	4.14%	-0.98%	-1.70%
CIPLA	1478.15	14.00	0.96%	16.52	244.18	1702.05	13.15%	1317.25	12.21%	1.29%	0.86%
COALINDIA	369.00	6.70	1.85%	46.23	169.21	543.55	32.11%	349.25	5.65%	-6.39%	-18.86%
DRREDDY	1171.95	6.10	0.52%	15.80	184.41	1421.49	17.55%	1120.00	4.64%	-10.48%	-81.72%
EICHERMOT	4897.00	86.40	1.80%	2.77	134.85	5575.50	12.17%	3672.00	33.36%	-4.11%	25.67%
GRASIM	2452.90	-10.30	-0.42%	4.27	104.89	2877.75	14.76%	2113.20	16.08%	2.55%	12.36%
HCLTECH	1690.90	-21.40	-1.25%	16.81	285.20	2012.20	15.97%	1235.00	36.91%	-4.67%	2.96%
HDFCBANK	1685.95	-41.25	-2.39%	131.92	2236.10	1880.00	10.32%	1397.30	20.66%	4.60%	18.77%
HDFCLIFE	620.40	-2.45	-0.39%	28.82	178.86	761.20	18.50%	511.40	21.31%	-1.77%	5.94%
HEROMOTOCO	3909.95	30.80	0.79%	4.39	171.51	6246.25	37.40%	3757.65	4.05%	-5.20%	-16.82%
HINDALCO	639.25	12.95	2.07%	69.04	440.74	772.65	17.27%	499.00	28.11%	1.32%	22.42%
HINDUNILVR	2247.55	-2.85	-0.13%	22.06	494.77	3035.00	25.95%	2172.05	3.48%	-4.04%	-6.39%
ICICIBANK	1248.15	-13.50	-1.07%	83.98	1051.73	1362.35	8.38%	1033.25	20.80%	2.33%	20.30%
INDUSINDBK	1045.00	9.20	0.89%	18.20	189.70	1576.35	33.71%	923.70	13.13%	6.71%	-31.14%
INFY	1826.00	15.20	0.84%	22.18	404.17	2006.45	8.99%	1358.35	34.43%	-0.14%	7.45%
ITC	402.00	-4.40	-1.08%	153.47	615.88	528.50	23.94%	396.20	1.46%	-7.15%	0.07%
JSWSTEEL	980.00	2.65	0.27%	14.75	144.89	1063.00	7.81%	761.75	28.65%	6.33%	19.01%
KOTAKBANK	1970.00	-15.00	-0.76%	47.24	930.80	1994.90	1.25%	1543.85	27.60%	3.36%	12.62%
LT	3275.55	-0.35	-0.01%	12.37	404.92	3963.50	17.36%	3175.05	3.17%	-8.83%	-2.41%
M&M	2832.35	74.95	2.72%	38.00	1061.31	3270.95	13.41%	1788.80	58.34%	-4.53%	48.76%
MARUTI	12420.00	-266.15	-2.10%	4.24	527.20	13680.00	9.21%	10725.00	15.80%	5.54%	10.83%
NESTLEIND	2201.20	-3.75	-0.17%	6.58	145.03	2778.00	20.76%	2131.25	3.28%	-0.41%	-13.17%
NTPC	325.05	10.25	3.26%	228.85	739.21	448.45	27.52%	292.80	11.01%	-6.32%	-8.94%
ONGC	241.55	3.25	1.36%	89.28	215.09	345.00	29.99%	223.00	8.32%	-11.53%	-13.85%
POWERGRID	265.75	2.70	1.03%	153.11	405.74	366.25	27.44%	252.20	5.37%	-14.11%	-8.63%
RELIANCE	1232.00	4.55	0.37%	77.93	961.64	1608.80	23.42%	1193.35	3.24%	-5.97%	-58.28%
SBILIFE	1470.00	-5.60	-0.38%	3.47	51.14	1936.00	24.07%	1307.70	12.41%	-1.61%	-2.51%
SBIN	728.85	1.55	0.21%	74.19	540.94	912.00	20.08%	711.55	2.43%	-6.67%	-4.32%
SHRIRAMFIN	580.10	22.30	4.00%	75.91	435.40	730.45	20.58%	438.60	32.26%	7.95%	-76.92%
SUNPHARMA	1671.00	-5.60	-0.33%	16.71	278.88	1960.35	14.76%	1377.20	21.33%	-5.72%	8.96%
TATACONSUM	1009.00	-16.30	-1.59%	8.79	88.84	1256.44	19.69%	882.90	14.28%	6.77%	-11.18%
TATAMOTORS	688.40	7.40	1.09%	86.70	595.63	1179.00	41.61%	667.05	3.20%	-12.06%	-26.49%
TATASTEEL	138.00	2.24	1.65%	241.34	331.16	184.60	25.24%	122.62	12.54%	3.11%	-3.75%
TCS	3788.00	3.90	0.10%	28.88	1089.80	4592.25	17.51%	3591.50	5.47%	-7.20%	-6.12%
TECHM	1657.00	-28.80	-1.71%	14.84	247.62	1807.70	8.34%	1162.95	42.48%	0.67%	27.66%
TITAN	3195.00	-15.30	-0.48%	6.53	208.87	3867.00	17.38%	3055.65	4.56%	-5.08%	-12.92%
TRENT	5093.90	102.45	2.05%	8.13	410.43	8345.00	38.96%	3750.25	35.83%	-18.04%	23.98%
ULTRACEMCO	11256.00	-35.55	-0.31%	1.42	160.68	12145.35	7.32%	9250.00	21.69%	6.28%	13.15%
WIPRO	313.10	-1.00	-0.32%	76.96	240.73	324.60	3.54%	208.50	50.17%	4.61%	-40.95%

Disclaimer / Disclosures

ANALYST CERTIFICATION

I, Mrs. Vaishali Parekh B.com, Research Analyst, author and the name subscribed to this report, hereby certify that all of the views expressed in this research report accurately reflect our views about the subject issuer(s) or securities. We also certify that no part of our compensation was, is, or will be directly or indirectly related to the specific recommendation(s) or view(s) in this report.

Terms & conditions and other disclosures:

Prabhudas Lilladher Pvt. Ltd, Mumbai, India (hereinafter referred to as "PL") is engaged in the business of Stock Broking, Portfolio Manager, Depository Participant and distribution for third party financial products. PL is a subsidiary of Prabhudas Lilladher Advisory Services Pvt Ltd. which has its various subsidiaries engaged in business of commodity broking, investment banking, financial services (margin funding) and distribution of third party financial/other products, details in respect of which are available at www.plindia.com

This document has been prepared by the Research Division of PL and is meant for use by the recipient only as information and is not for circulation. This document is not to be reported or copied or made available to others without prior permission of PL. It should not be considered or taken as an offer to sell or a solicitation to buy or sell any security.

The information contained in this report has been obtained from sources that are considered to be reliable. However, PL has not independently verified the accuracy or completeness of the same. Neither PL nor any of its affiliates, its directors or its employees accepts any responsibility of whatsoever nature for the information, statements and opinion given, made available or expressed herein or for any omission therein.

Recipients of this report should be aware that past performance is not necessarily a guide to future performance and value of investments can go down as well. The suitability or otherwise of any investments will depend upon the recipient's particular circumstances and, in case of doubt, advice should be sought from an independent expert/advisor.

Either PL or its affiliates or its directors or its employees or its representatives or its clients or their relatives may have position(s), make market, act as principal or engage in transactions of securities of companies referred to in this report and they may have used the research material prior to publication.

PL may from time to time solicit or perform investment banking or other services for any company mentioned in this document.

PL is registered as Research Analyst under Securities and Exchange Board of India (Research Analysts) Regulations, 2014 PL submits that no material disciplinary action has been taken on us by any Regulatory Authority impacting Equity Research Analysis activities.

PL or its research analysts or its associates or his relatives do not have any financial interest in the subject company.

PL or its research analysts or its associates or his relatives do not have actual/beneficial ownership of one per cent or more securities of the subject company at the end of the month immediately preceding the date of publication of the research report.

PL or its research analysts or its associates or his relatives do not have any material conflict of interest at the time of publication of the research report.

PL or its associates might have received compensation from the subject company in the past twelve months.

PL or its associates might have managed or co-managed public offering of securities for the subject company in the past twelve months or mandated by the subject company for any other assignment in the past twelve months.

PL or its associates might have received any compensation for investment banking or merchant banking or brokerage services from the subject company in the past twelve months.

PL or its associates might have received any compensation for products or services other than investment banking or merchant banking or brokerage services from the subject company in the past twelve months PL or its associates might have received any compensation or other benefits from the subject company or third party in connection with the research report.

PL encourages independence in research report preparation and strives to minimize conflict in preparation of research report. PL or its analysts did not receive any compensation or other benefits from the subject Company or third party in connection with the preparation of the research report. PL or its Research Analysts do not have any material conflict of interest at the time of publication of this report.

It is confirmed that Mrs.Vaishali Parekh B.com, Research Analyst of this report has not received any compensation from the companies mentioned in the report in the preceding twelve months compensation of our Research Analysts is not based on any specific merchant banking, investment banking or brokerage service transactions.

The Research analysts for this report certifies that all of the views expressed in this report accurately reflect his or her personal views about the subject company or companies and its or their securities, and no part of his or her compensation was, is or will be, directly or indirectly related to specific recommendations or views expressed in this report.

The research analysts for this report has not served as an officer, director or employee of the subject company PL or its research analysts have not engaged in market making activity for the subject company

Our sales people, traders, and other professionals or affiliates may provide oral or written market commentary or trading strategies to our clients that reflect opinions that are contrary to the opinions expressed herein, and our proprietary trading and investing businesses may make investment decisions that are inconsistent with the recommendations expressed herein. In reviewing these materials, you should be aware that any or all of the foregoing, among other things, may give rise to real or potential conflicts of interest.

PL and its associates, their directors and employees may (a) from time to time, have a long or short position in, and buy or sell the securities of the subject company or (b) be engaged in any other transaction involving such securities and earn brokerage or other compensation or act as a market maker in the financial instruments of the subject company or act as an advisor or lender/borrower to the subject company or may have any other potential conflict of interests with respect to any recommendation and other related information and opinions.

Regd. Office: 3rd Floor, Sadhana House, 570, P. B. Marg, Behind Mahindra Tower, Worli, Mumbai - 400 018, India.