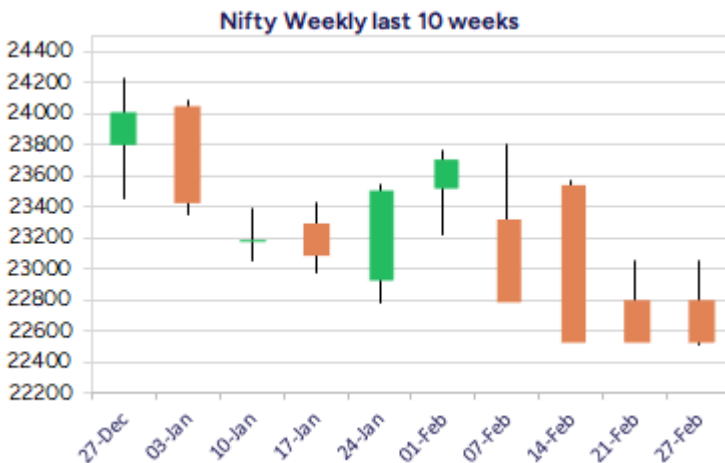
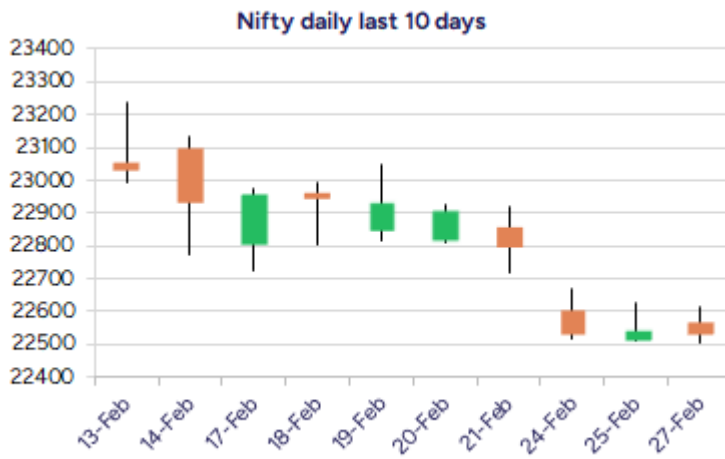


* Sensex 74612.43 + 10.31

* Nifty 22545.05 - 02.50

* Bank Nifty 48743.80 + 135.45



*Blue candle → Close rate > Open rate * Red candle → Close rate < Open rate

Market Preview

Nifty manages to hold 22500; ends flat

Nifty with a weak bias once again retested the 22500 zone with bias weakening & sentiment maintained with a very cautious approach. The midcap & small cap sector is witnessing heavy profit booking & ended in the red. Bank Nifty witnessed a recovery but fell to sustain above the 49000 zone, ending the session near the 48700 level with a bias precariously placed. The advance/decline indicated a weak ratio of 2:3 at close.

Market Forecast

Nifty daily range 22300-22800

Nifty witnessed a muted session on the F&O segment expiry day of the month to end on a flat note, closing near the 22550 zone, which has created a very cautious approach among the market players with the index now precariously placed. The next major support would be near 22300 levels, while for the bias to improve, the index needs to move past the 22800 zone and witness some stability.

Bank Nifty witnessed an improving bias as compared to the Nifty index but found a tough resistance barrier near the 49000 zone and once again, amid last hour fluctuations, slipped down to end near 48700 levels with a bias maintained with a cautiously positive approach. The index needs to cross the hurdle above the 49000 zone and also on the upside has the significant 50 EMA at the 49750 level, which needs to be breached decisively to carry on with the positive move further ahead. As of now, the 48300 zone would be the crucial support zone; breaking below can trigger intensified selling pressure to drag the index further down.

The support for the day is seen at 22300 levels, while the resistance is seen at 22800 levels. Bank Nifty would have the daily range of 48000-49500 levels.

Indices	Period	Closing	% Chng	Trend	Reversal	2 Sup	1 Sup	Pivot	1 Res	2 Res
Nifty	Daily	22545.05	-0.01%	-13	22629.25	22451	22498	22556	22603	22660
	Weekly	22795.90	-0.58%	-2	23039.90	22526	22661	22855	22990	23185
	Monthly	23508.40	-0.58%	-4	26209.65	22068	22788	23507	24228	24947
Bank Nifty	Daily	48743.80	0.28%	-4	48867.10	48436	48590	48781	48935	49127
	Weekly	48981.20	-0.24%	-2	48868.80	47942	48462	49045	49564	50148
	Monthly	49587.20	-2.50%	-4	53427.15	45873	47730	49701	51559	53530
Sensex	Daily	74612.43	0.01%	-13	74852.30	74342	74477	74656	74791	74969
	Weekly	75311.06	-0.83%	-2	76152.00	74604	74958	75648	76002	76692
	Monthly	77500.57	-0.82%	-4	85623.60	72808	75154	77614	79960	82419

Daily Trend turned Down			
Scrip Name	LCP	Curr Trnd	Reversal
GLAXO	2620.9	7	2643.85
DELTACORP	91.96	6	92.3
EMAMILTD	545.8	6	545.95
GODREJPROP	1939.25	6	1973.55
MGL	1311.3	6	1315.2
NTPC	315.7	6	317.25
BALRAMCHIN	447	5	453.4
ENGINERSIN	161.69	5	164.75
EXIDEIND	354.5	5	363.65
HSCL	421.8	5	428.45
INTELLECT	702.1	5	704.6
KEC	692.75	5	731

* Trends turned Down after a significant period

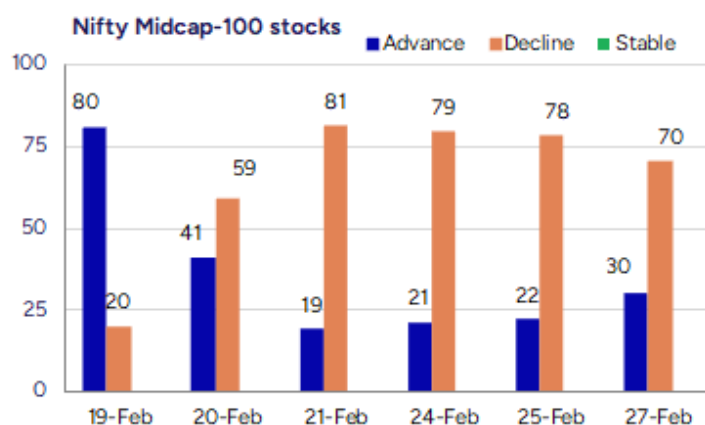
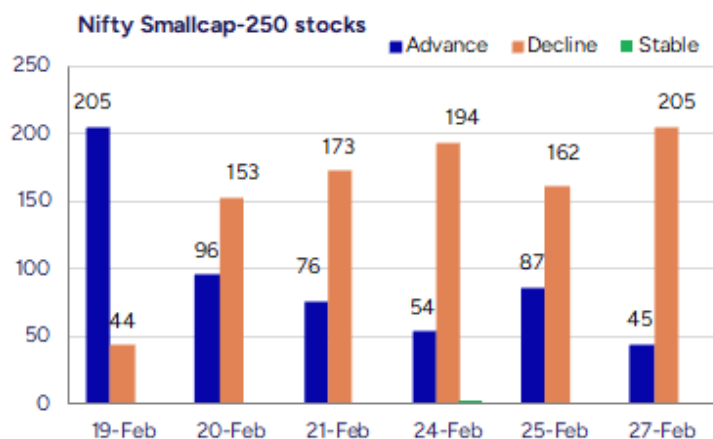
Daily Trend turned Down			
Scrip Name	LCP	Curr Trnd	Reversal
MRPL	110.49	5	112
NHPC	74.31	5	76.1
PFCL	378.1	5	381.5
POLYCAB	4679.55	5	5633
PRAJINDLTD	510.1	5	527.05
RAMCOCEM	842.85	5	851.9
RAYMOND	1359.1	5	1362.4
SIEMENS	4686.65	5	4840.4
TATAPOWER	343.3	5	348.25
TVTODAY	159.64	5	161.05
UPL	643.65	5	646.55
YESBANK	17.36	5	17.75

* Trends turned Down after a significant period

Gainers - Losers (Nifty 500 Stocks)

Gainers			
Scrip Name	LCP	% Change	Volume
Mangalam Alloys	31.6	15.33	59200
Visaman Global	40.95	13.75	210000
Ashiana Housing	331.7	13.21	649733
CreditAccess Gr	971.45	12.12	30809925
Ajooni Biotech	7.49	9.66	4898894
Reliance Chemo	175.03	9.06	193785
Just Dial	892.45	8.62	1184381

Losers			
Scrip Name	LCP	% Change	Volume
KEI Industries	2999.05	-21.03	5269783
Medico Remedies	50.54	-20.01	2883182
Medico Remedies	50.54	-20.01	2883182
R R Kabel	890.55	-19.81	3277025
Swelect Energy	510.1	-18.95	609067
Polycab	4679.55	-18.84	5049805
Century Enka	533.1	-10.72	98995



Nifty Daily chart with RSI indicator



BankNifty Daily chart with RSI indicator



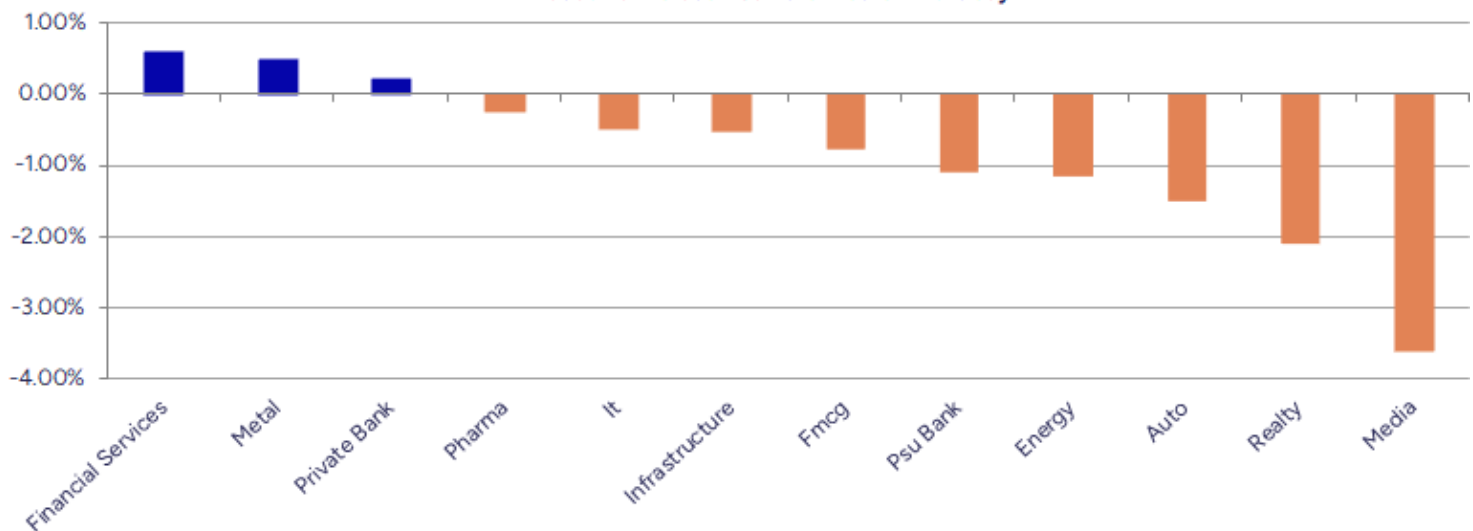
Breakouts - Cross above 200 DMA			
Company Name	LCP	Change %	200 DMA
Shriram Finance	606.8	3.05	588.86
Krishna Institu	531.6	2.74	517.44
Bharti Hexacom	1306.1	2.09	1279.41
Radico Khaitan	2085.1	1.76	2049.04
Thangamayil	1920.8	1.65	1889.63
Kernex Micro	847.45	0.83	840.51
Ramdevbaba Solv	112	0.44	111.51
Sundaram Fin	4567.95	0.35	4551.86

Breakdown - Cross below 200 DMA			
Company Name	LCP	Change %	200 DMA
Genesys Int	704.3	-6.87	756.28
RBZ Jewellers	158.22	-5.59	167.58
ASK Auto	394.5	-5.28	416.49
AMSL	250.95	-4.88	263.83
Jindal Worldwid	344.7	-4.05	359.24
Time Techno	368.8	-3.95	383.98
KDDL	2763.25	-3.89	2875.04
Sapphire Foods	307.55	-3.89	320.01
Ameya Precision	100.05	-3.83	104.03
Star Cement	202.67	-3.81	210.69
Jubilant Ing.	648.4	-3.72	673.48
Paradeep Phosph	90.3	-3.66	93.73
Reliance Power	34.75	-3.53	36.02
Vardhman Poly	10.78	-3.49	11.17
Chaman Lal Seti	277.45	-3.33	287.01
The Western Ind	187.5	-3.32	193.93
D. P. Abhushan	1447.4	-3.31	1496.92
Radhika Jewel	93.06	-3.29	96.23

* Stocks crossing above its Simple Moving Average (200DMA)

* Stocks crossing below its Simple Moving Average (200DMA)

Sectoral Indices - Gainers Losers for the day



Stocks witnessing a volume surge as compared to their 5 day average volume

Watch out for the stocks that have seen a huge spurt in its share price over the last three days

Volume Shockers - NSE					
Company name	LCP	% Chg	Volume	Avg Vol *	% Chg
Dolphin Offshor	217.6	4.99	511994	2253	22627
CreditAccess Gr	955	10.22	30386413	198052	15243
Inox India	929	2.67	11985823	175653	6724
KEI Industries	2989.95	-21.27	5134441	145420	3431
R R Kabel	889.55	-19.9	3162457	110125	2772
Reliance Chemo	170.56	6.27	185190	7564	2348
Jash Engineerin	556.7	6.29	617936	26774	2208
Polycab	4673.9	-18.93	4866171	236448	1958
Visaman Global	40.95	13.75	210000	10800	1844
Digjam	35.38	-3.57	49896	2744	1718
Vijaya Diagnost	970	-8.66	3872353	222272	1642
Remsons Ind	120.5	-3.44	347841	21094	1549
Shriram Finance	607.95	5.87	16088993	1003099	1504
Jindal Drilling	802.9	-8.09	545662	34855	1466
Varun Beverages	447.35	-6.12	19005742	1424186	1234
Shakti Pumps	836.2	-5	509565	38631	1219
R M Drip & Spri	395.7	0.18	118500	9800	1109
Transformers	409.8	-3.77	1565686	131705	1089
Adani Green Ene	809	-3.76	5258314	480592	994
BEW Engineering	161.5	-0.52	11500	1125	922

* the Average Volume of last 5 days

Price Shockers - NSE				
Company name	LCP	3 days *	% Chg	Volume
Guj Themis	233.63	7.3	3100.41	24659
Heads UP Vent	13.18	9.21	43.11	1094946
Phantom Digital	232.3	186	24.89	71700
Ashiana Housing	331.7	284.1	16.75	649733
DEE Development	212.2	182.95	15.99	145791
Emami Realty	97.93	84.6	15.76	4933
Digikore	224.95	194.35	15.74	27200
Premier Polyfil	69.02	59.68	15.65	205064
Identical Brain	52.7	45.6	15.57	84000
JSW Holdings	17224.8	15276	12.76	5667
Mufin Green	80.72	72.27	11.69	0
ANI Integrated	146.4	131.9	10.99	1200
Softtech Engine	369.1	333.1	10.81	972
Silgo Retail	41.9	38	10.26	83335
SEMAC CONSULT	369.8	335.45	10.24	0
CCCL	14.55	13.2	10.23	0
Jakharia Fabric	77.3	70.15	10.19	2400
DJ Mediaprint	135	122.66	10.06	0

* the % price rise of the last 3 days

Nifty 50 stocks - Summary Details											
Symbol	LTP	Chng	% Chng	Volume (lacs)	Turnover (crs.)	52w High	Diff with 52w H	52w Low	Diff with 52w L	365 days % chng	30 days % chng
NIFTY 50	22545.05	-2.50	-0.01%	2892.13	29773.89	26277.35	14.20%	21281.45	5.94%	-1.23%	1.57%
ADANIEN	2108.00	-21.85	-1.03%	9.42	199.89	3743.90	43.70%	2025.00	4.10%	-5.75%	-35.50%
ADANIPTS	1075.55	-4.80	-0.44%	18.19	196.03	1621.40	33.67%	995.65	8.02%	-0.15%	-18.74%
APOLLOHOSP	6170.00	-81.35	-1.30%	3.98	246.24	7545.35	18.23%	5693.20	8.37%	-6.63%	-5.58%
ASIANPAINT	2211.05	-13.70	-0.62%	10.27	227.29	3394.90	34.87%	2185.70	1.16%	-1.19%	-22.20%
AXISBANK	1017.45	8.35	0.83%	97.78	994.83	1339.65	24.05%	933.50	8.99%	6.43%	-6.48%
BAJAJ-AUTO	8195.00	-222.90	-2.65%	3.51	289.66	12774.00	35.85%	7890.00	3.87%	0.40%	-0.54%
BAJAJFINSV	1920.10	45.00	2.40%	28.78	552.57	2029.90	5.41%	1419.05	35.31%	9.55%	17.15%
BAJFINANCE	8660.75	171.95	2.03%	18.38	1596.95	8739.00	0.90%	6187.80	39.96%	16.36%	29.48%
BEL	252.00	-4.65	-1.81%	110.86	281.74	340.50	25.99%	179.10	40.70%	-2.40%	24.98%
BHARTIARTL	1646.00	4.60	0.28%	75.68	1247.59	1779.00	7.48%	1099.00	49.77%	2.42%	45.58%
BPCL	244.45	-4.00	-1.61%	73.75	180.26	376.00	34.99%	242.10	0.97%	-4.92%	-60.25%
BRITANNIA	4803.00	4.95	0.10%	3.87	185.37	6469.90	25.76%	4641.00	3.49%	-7.31%	-2.17%
CIPLA	1438.50	-24.85	-1.70%	12.61	182.22	1702.05	15.48%	1317.25	9.20%	4.82%	-1.62%
COALINDIA	362.90	1.75	0.48%	61.97	223.98	543.55	33.24%	349.25	3.91%	-3.89%	-18.18%
DRREDDY	1122.00	-6.15	-0.55%	34.35	386.17	1421.49	21.07%	1115.00	0.63%	-5.80%	-82.51%
EICHERMOT	4920.00	-69.80	-1.40%	5.62	276.93	5575.50	11.76%	3672.00	33.99%	-3.01%	24.66%
GRASIM	2347.00	-32.30	-1.36%	10.46	244.48	2877.75	18.44%	2128.60	10.26%	-3.20%	7.91%
HCLTECH	1621.00	-15.10	-0.92%	22.67	368.62	2012.20	19.44%	1235.00	31.26%	-4.43%	-1.37%
HDFCBANK	1698.25	15.90	0.95%	178.92	3043.49	1880.00	9.67%	1397.30	21.54%	3.22%	18.46%
HDFCLIFE	615.00	-7.15	-1.15%	18.31	113.63	761.20	19.21%	511.40	20.26%	1.96%	6.97%
HEROMOTOCO	3752.90	-75.35	-1.97%	8.78	329.62	6246.25	39.92%	3725.25	0.74%	-4.67%	-13.58%
HINDALCO	630.50	11.05	1.78%	72.63	455.47	772.65	18.40%	499.00	26.35%	5.55%	21.54%
HINDUNILVR	2243.55	-15.75	-0.70%	17.00	382.16	3035.00	26.08%	2172.05	3.29%	-5.58%	-6.07%
ICICIBANK	1220.00	-4.15	-0.34%	120.08	1472.87	1362.35	10.45%	1038.50	17.48%	-0.31%	15.46%
INDUSINDBK	1040.70	6.45	0.62%	59.51	624.83	1576.35	33.98%	923.70	12.67%	11.64%	-30.73%
INFY	1763.00	-4.70	-0.27%	57.56	1015.02	2006.45	12.13%	1358.35	29.79%	-2.98%	6.26%
ITC	401.50	-3.35	-0.83%	190.50	765.31	528.50	24.03%	396.20	1.34%	-8.01%	-1.53%
JSWSTEEL	972.00	13.25	1.38%	20.50	199.20	1063.00	8.56%	761.75	27.60%	4.29%	17.07%
KOTAKBANK	1941.90	-25.35	-1.29%	37.08	723.22	1994.90	2.66%	1543.85	25.78%	4.56%	15.26%
LT	3210.00	-15.90	-0.49%	25.72	825.55	3963.50	19.01%	3175.05	1.10%	-6.70%	-8.00%
M&M	2720.00	-57.85	-2.08%	26.70	730.99	3270.95	16.84%	1788.80	52.06%	-1.90%	42.41%
MARUTI	12322.00	-154.35	-1.24%	2.37	293.26	13680.00	9.93%	10725.00	14.89%	4.02%	8.48%
NESTLEIND	2278.00	27.60	1.23%	7.51	170.35	2778.00	18.00%	2131.25	6.89%	3.48%	-13.40%
NTPC	315.70	-3.00	-0.94%	72.99	230.45	448.45	29.60%	292.80	7.82%	-1.09%	-5.18%
ONGC	231.20	-1.80	-0.77%	96.62	222.29	345.00	32.99%	223.00	3.68%	-7.09%	-13.50%
POWERGRID	256.50	0.75	0.29%	136.15	348.36	366.25	29.97%	252.20	1.70%	-10.89%	-12.56%
RELIANCE	1208.00	4.00	0.33%	115.09	1388.31	1608.80	24.91%	1193.35	1.23%	-2.06%	-59.48%
SBILIFE	1462.05	-9.70	-0.66%	14.22	208.76	1936.00	24.48%	1307.70	11.80%	3.32%	-4.60%
SBIN	702.30	-8.60	-1.21%	120.33	851.04	912.00	22.99%	701.10	0.17%	-5.11%	-5.19%
SHRIRAMFIN	604.00	29.75	5.18%	170.99	1028.58	730.45	17.31%	438.60	37.71%	12.23%	-75.79%
SUNPHARMA	1642.00	28.40	1.76%	27.44	447.52	1960.35	16.24%	1377.20	19.23%	-9.70%	1.95%
TATACONSUM	1008.00	3.15	0.31%	13.62	136.97	1256.44	19.77%	882.90	14.17%	4.04%	-15.10%
TATAMOTORS	647.75	-13.85	-2.09%	122.80	801.32	1179.00	45.06%	645.65	0.33%	-7.22%	-31.28%
TATASTEEL	138.80	1.73	1.26%	307.47	421.94	184.60	24.81%	122.62	13.20%	8.47%	-4.94%
TCS	3608.05	-21.50	-0.59%	38.24	1381.72	4592.25	21.43%	3591.50	0.46%	-10.72%	-11.57%
TECHM	1580.00	-13.95	-0.88%	22.09	349.54	1807.70	12.60%	1162.95	35.86%	-3.62%	22.99%
TITAN	3225.00	26.20	0.82%	6.04	193.73	3867.00	16.60%	3055.65	5.54%	-3.63%	-12.45%
TRENT	4780.00	-179.90	-3.63%	9.98	482.93	8345.00	42.72%	3750.25	27.46%	-8.36%	25.97%
ULTRACEMCO	10450.00	-514.15	-4.69%	17.22	1797.74	12145.35	13.96%	9250.00	12.97%	-2.45%	10.18%
WIPRO	292.35	1.05	0.36%	155.55	456.89	324.60	9.94%	208.50	40.22%	-5.41%	-45.19%

Disclaimer / Disclosures

ANALYST CERTIFICATION

I, Mrs. Vaishali Parekh B.com, Research Analyst, author and the name subscribed to this report, hereby certify that all of the views expressed in this research report accurately reflect our views about the subject issuer(s) or securities. We also certify that no part of our compensation was, is, or will be directly or indirectly related to the specific recommendation(s) or view(s) in this report.

Terms & conditions and other disclosures:

Prabhudas Lilladher Pvt. Ltd, Mumbai, India (hereinafter referred to as "PL") is engaged in the business of Stock Broking, Portfolio Manager, Depository Participant and distribution for third party financial products. PL is a subsidiary of Prabhudas Lilladher Advisory Services Pvt Ltd. which has its various subsidiaries engaged in business of commodity broking, investment banking, financial services (margin funding) and distribution of third party financial/other products, details in respect of which are available at www.plindia.com

This document has been prepared by the Research Division of PL and is meant for use by the recipient only as information and is not for circulation. This document is not to be reported or copied or made available to others without prior permission of PL. It should not be considered or taken as an offer to sell or a solicitation to buy or sell any security.

The information contained in this report has been obtained from sources that are considered to be reliable. However, PL has not independently verified the accuracy or completeness of the same. Neither PL nor any of its affiliates, its directors or its employees accepts any responsibility of whatsoever nature for the information, statements and opinion given, made available or expressed herein or for any omission therein.

Recipients of this report should be aware that past performance is not necessarily a guide to future performance and value of investments can go down as well. The suitability or otherwise of any investments will depend upon the recipient's particular circumstances and, in case of doubt, advice should be sought from an independent expert/advisor.

Either PL or its affiliates or its directors or its employees or its representatives or its clients or their relatives may have position(s), make market, act as principal or engage in transactions of securities of companies referred to in this report and they may have used the research material prior to publication.

PL may from time to time solicit or perform investment banking or other services for any company mentioned in this document.

PL is registered as Research Analyst under Securities and Exchange Board of India (Research Analysts) Regulations, 2014 PL submits that no material disciplinary action has been taken on us by any Regulatory Authority impacting Equity Research Analysis activities.

PL or its research analysts or its associates or his relatives do not have any financial interest in the subject company.

PL or its research analysts or its associates or his relatives do not have actual/beneficial ownership of one per cent or more securities of the subject company at the end of the month immediately preceding the date of publication of the research report.

PL or its research analysts or its associates or his relatives do not have any material conflict of interest at the time of publication of the research report.

PL or its associates might have received compensation from the subject company in the past twelve months.

PL or its associates might have managed or co-managed public offering of securities for the subject company in the past twelve months or mandated by the subject company for any other assignment in the past twelve months.

PL or its associates might have received any compensation for investment banking or merchant banking or brokerage services from the subject company in the past twelve months.

PL or its associates might have received any compensation for products or services other than investment banking or merchant banking or brokerage services from the subject company in the past twelve months PL or its associates might have received any compensation or other benefits from the subject company or third party in connection with the research report.

PL encourages independence in research report preparation and strives to minimize conflict in preparation of research report. PL or its analysts did not receive any compensation or other benefits from the subject Company or third party in connection with the preparation of the research report. PL or its Research Analysts do not have any material conflict of interest at the time of publication of this report.

It is confirmed that Mrs.Vaishali Parekh B.com, Research Analyst of this report has not received any compensation from the companies mentioned in the report in the preceding twelve months compensation of our Research Analysts is not based on any specific merchant banking, investment banking or brokerage service transactions.

The Research analysts for this report certifies that all of the views expressed in this report accurately reflect his or her personal views about the subject company or companies and its or their securities, and no part of his or her compensation was, is or will be, directly or indirectly related to specific recommendations or views expressed in this report.

The research analysts for this report has not served as an officer, director or employee of the subject company PL or its research analysts have not engaged in market making activity for the subject company

Our sales people, traders, and other professionals or affiliates may provide oral or written market commentary or trading strategies to our clients that reflect opinions that are contrary to the opinions expressed herein, and our proprietary trading and investing businesses may make investment decisions that are inconsistent with the recommendations expressed herein. In reviewing these materials, you should be aware that any or all of the foregoing, among other things, may give rise to real or potential conflicts of interest.

PL and its associates, their directors and employees may (a) from time to time, have a long or short position in, and buy or sell the securities of the subject company or (b) be engaged in any other transaction involving such securities and earn brokerage or other compensation or act as a market maker in the financial instruments of the subject company or act as an advisor or lender/borrower to the subject company or may have any other potential conflict of interests with respect to any recommendation and other related information and opinions.