

\* Sensex 72989.93 -96.01

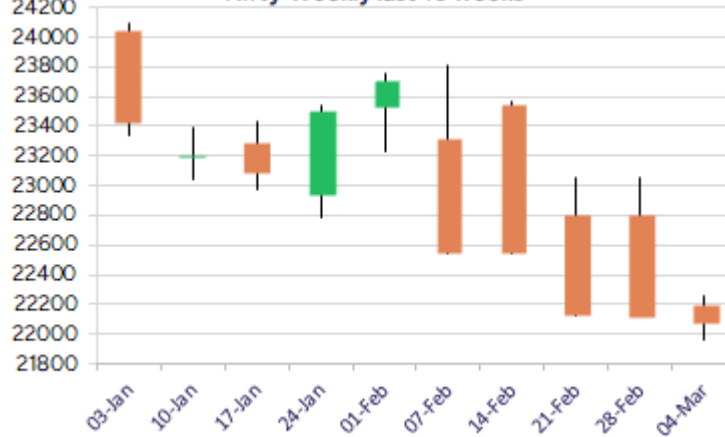
\* Nifty 22082.65 -36.65

\* Bank Nifty 48245.20 +130.90

Nifty daily last 10 days



Nifty Weekly last 10 weeks



\*Blue candle → Close rate > Open rate \* Red candle → Close rate < Open rate

## Market Preview

### Nifty sustains above 22000 zone

Nifty witnessed a decent pullback from the low to end the session near 22100 zone with active participation witnessed from the broader markets. BankNifty once again maintained the 47900 zone with some recovery witnessed to maintain the bias. The market breadth was positive with the advance decline indicating 2:1 ratio at close.

## Market Forecast

### Nifty daily range 21900-22300

Nifty after opening on a weak note below 22000 zone recovered to touch the 22100 level with improvement visible from the broader markets as well with pullback visible from their lower ends to improve the sentiment to some extent. As mentioned earlier, the index is precariously placed and with a decisive breach below 22000 level shall trigger for further slide in the coming days. A decisive move above 22500 zone is much needed to establish conviction and expect for stability in the coming sessions.

BankNifty, once again maintained the support zone near 47900 levels and witnessed a short pullback to end the session near 48250 level with bias maintained and would need a decisive move past the 49200 zone to establish conviction and expect for further rise in the coming days. At the same time, a decisive breach below the 47900 zone would further weaken the trend and can trigger for fresh slide thereafter.

The support for the day is seen at 21900 levels while the resistance is seen at 22300 levels. BankNifty would have the daily range of 47800-48800 levels.

Indices	Period	Closing	% Chng	Trend	Reversal	2 Sup	1 Sup	Pivot	1 Res	2 Res
Nifty	Daily	22082.65	-0.17%	-16	22185.20	21910	21997	22051	22137	22191
	Weekly	22124.70	-2.94%	-3	22686.90	21736	21930	22299	22494	22862
	Monthly	23508.40	-0.58%	-5	26264.60	22068	22788	23507	24228	24947
Bank Nifty	Daily	48245.20	0.27%	-7	48343.30	47731	47988	48182	48439	48632
	Weekly	48344.70	-1.30%	-3	48721.55	47571	47958	48465	48852	49359
	Monthly	49587.20	-2.50%	-5	52793.25	45873	47730	49701	51559	53530
Sensex	Daily	72989.93	-0.13%	-16	73343.00	72486	72738	72886	73138	73285
	Weekly	73198.10	-2.81%	-3	75057.20	71983	72591	73749	74356	75515
	Monthly	77500.57	-0.82%	-5	85764.50	72808	75154	77614	79960	82419

## Daily Trend turned Up

Scrip Name	LCP	Curr Trnd	Reversal
APLLTD	791.9	-16	752.95
BEML	2491.45	-3	2459.15
BHEL	192.75	-3	187.05
BIOCON	314.8	-15	308.25
BPCL	249.92	-6	243.25
CANFINHOME	592.6	-4	579.5
CASTROLIND	222.04	-2	219.25
CESC	136.99	-2	133.5
HINDPETRO	315.2	-4	302.85
INDIGO	4598.7	-4	4497.1
JINDALSTEL	867.3	-4	863.7
LARSENTOUBRO	3213	-4	3206.45

\* Trends turned Up after a significant period

## Daily Trend turned Up

Scrip Name	LCP	Curr Trnd	Reversal
NAVINFLUOR	3900.35	-15	3852.7
PIDILITIND	2698.65	-5	2694.8
PIIND	3040.7	-5	3016.65
POWERGRID	254	-4	253.75
PVR	928.1	-4	918.05
RAIN	124.26	-2	123.5
SAIL	107.66	-4	107.5
SBIN	716.05	-6	698.45
SPARC	127.04	-3	114.35
TCS	3532.05	-17	3522.6
TATASTEEL	139.34	-2	138.85
WOCKPHARMA	1223.55	-15	1207.35

\* Trends turned Up after a significant period

## Gainers - Losers ( Nifty 500 Stocks )

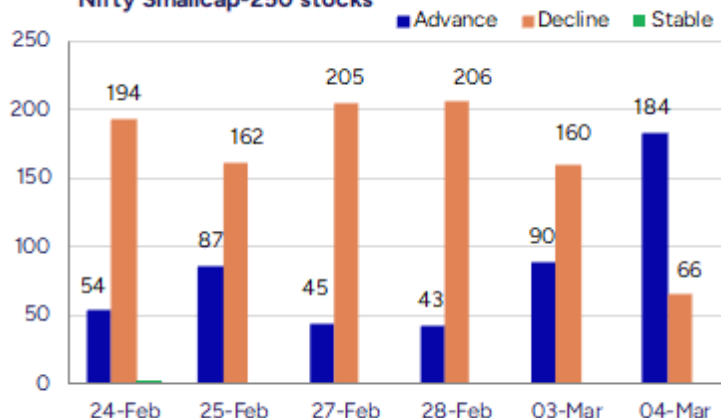
## Gainers

Scrip Name	LCP	% Change	Volume
Coffee Day	30.63	19.98	5121747
Readymix Constr	68.85	19.95	74000
MPS	2690.35	18.75	269659
Hind Motors	25.46	18.09	2706562
Sundaram-Clayto	2255.6	17.57	61118
MVK Agro Food	46.6	17.23	177600
Utssav CZ Gold	177.15	16.93	113400

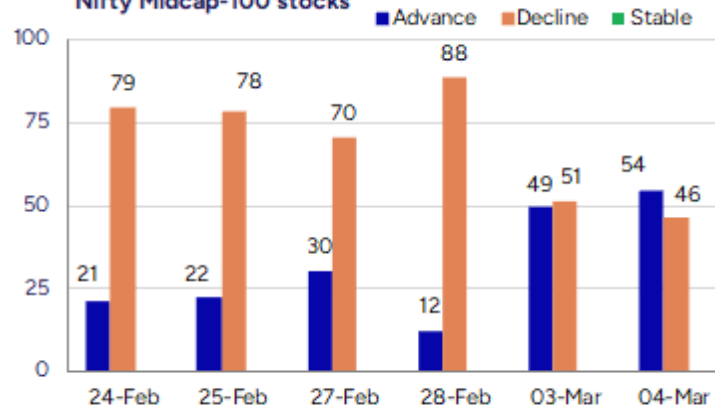
## Losers

Scrip Name	LCP	% Change	Volume
Gensol Eng	413.3	-20	950467
Newjaisa Techno	50.35	-19.95	1203000
Jindal Worldwid	69.11	-12.19	3237008
IGIL	331.45	-9.5	9135736
Sunlite Recycli	109	-8.79	22800
Saroja Pharma	41.7	-8.35	1600
United Polyfab	120.7	-8.18	7913

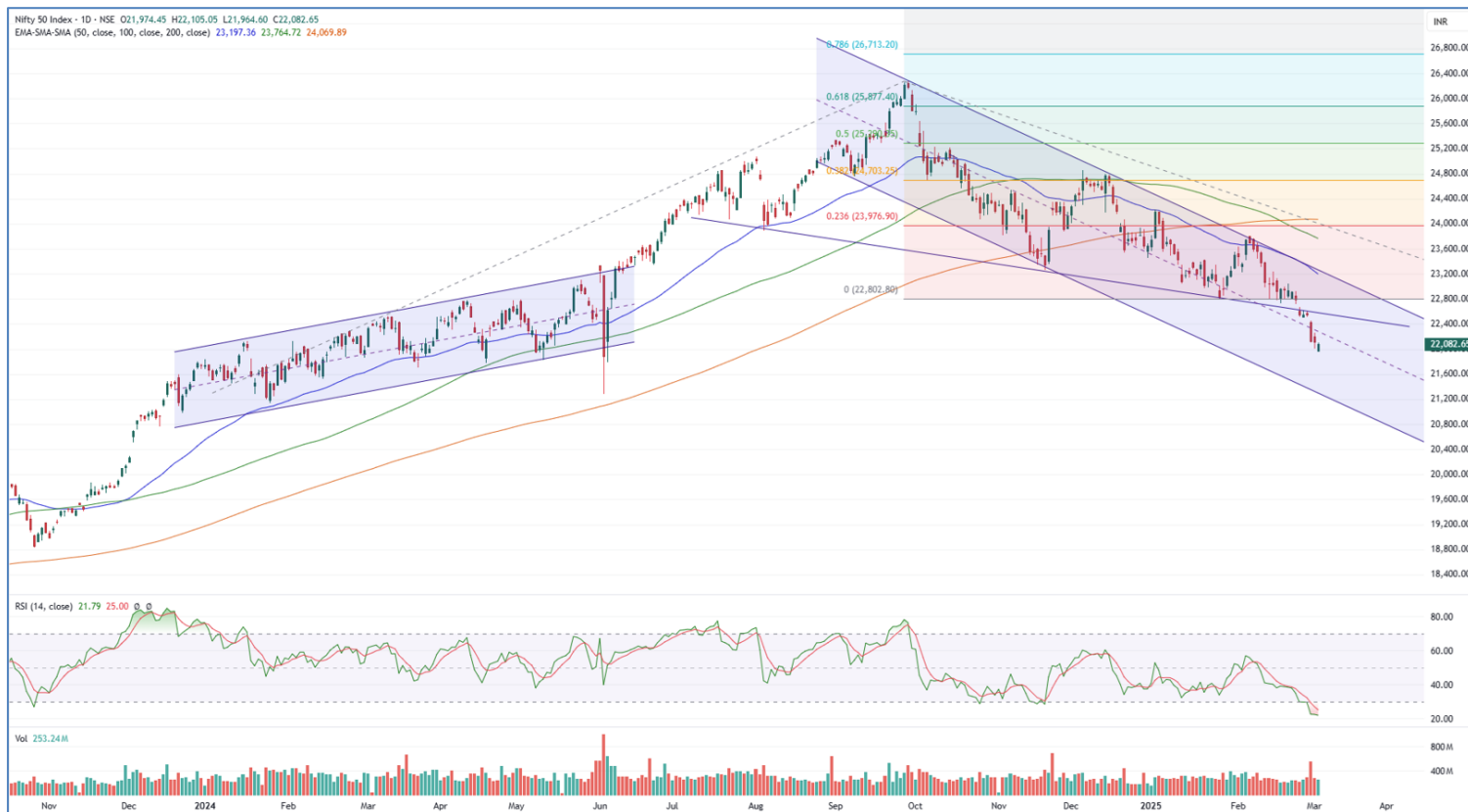
## Nifty Smallcap-250 stocks



## Nifty Midcap-100 stocks



### Nifty Daily chart with RSI indicator



### BankNifty Daily chart with RSI indicator



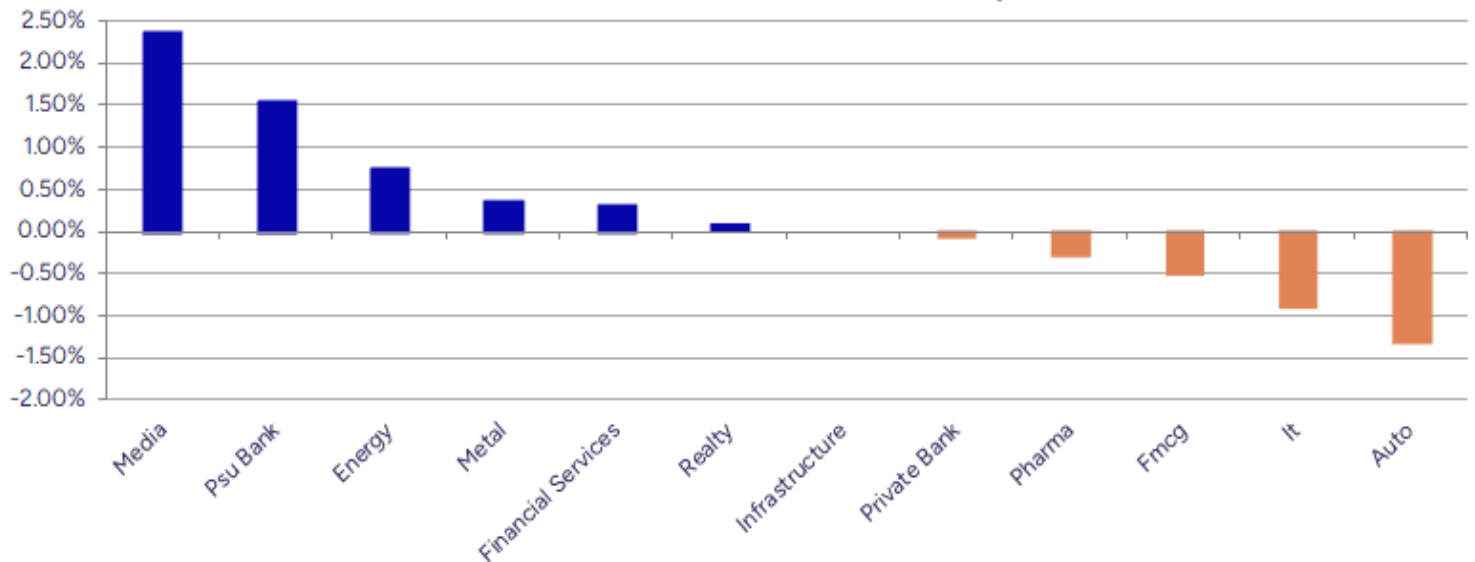
Breakouts - Cross above 200 DMA			
Company Name	LCP	Change %	200 DMA
Nacl Industries	69.42	12.66	61.62
Sundaram-Clayto	2255.6	7.07	2106.62
AstraZeneca	7306.25	6.52	6859.36
Jeena Sikho	1643.55	5.84	1552.85
Vadilal Ind	4272.4	5.63	4044.59
Vijaya Diagnost	996.45	5.36	945.77
MVK Agro Food P	46.6	3.19	45.16
Borosil Renew	522.2	3.02	506.87
DOMS Industries	2561.25	2.35	2502.52
Kitex Garments	161.43	1.86	158.48
Windlas	891.3	1.78	875.72
Max Healthcare	988.45	1.28	976
Paradeep Phosph	95.15	1.19	94.03
Castrol	222.04	1.16	219.5
Sundaram Fin	4587.05	0.82	4549.66
Hikal	358.25	0.74	355.62
Royal Orchid	352.85	0.58	350.8
Alivus Life	1021.4	44.00%	1016.9

\* Stocks crossing above its Simple Moving Average (200DMA)

Breakdown - Cross below 200 DMA			
Company Name	LCP	Change %	200 DMA
Jindal Worldwid	69.11	-3.93	71.94
Kernex Micro	815.1	-3.70	846.45
AYM Syntex	181.82	-3.26	187.94
Jubilant Food	610.25	-3.09	629.68
Persistent	5153	-2.12	5264.35
Avonmore Cap	16.33	-1.39	16.56
Eicher Motors	4815.1	-1.16	4871.37
Yaari Digital	12.3	-1.13	12.44
Kanpur Plast	117.65	-1.01	118.85
Indus Infra Tru	110.1	-0.43	110.58
J. K. Cement	4405.6	-0.40	4423.51
Patanjali Foods	1731.95	-0.33	1737.61
Sapphire Foods	319.9	-0.21	320.58
Radico Khaitan	2051.2	-0.20	2055.4
Manaksia Coated	76.03	-0.18	76.17
LIQUIDSBI	999.99	0.00	1000

\* Stocks crossing below its Simple Moving Average (200DMA)

Sectoral Indices - Gainers Losers for the day



Stocks witnessing a volume surge as compared to their 5 day average volume

Watch out for the stocks that have seen a huge spurt in its share price over the last three days

Volume Shockers - NSE					
Company name	LCP	% Chg	Volume	Avg Vol *	% Chg
G-Tec Jainx	27.78	-4.99	145120	2151	6646
Vijaya Diagnost	1010.65	8.36	11534119	222272	5089
Newjaisa Tech	50.35	-19.95	1201500	30900	3788
Narayana Hruda	1578.95	-2.27	9891389	272555	3529
Ushanti Colour	53.15	-3.54	100000	2800	3471
Mindpool Techno	57.1	-4.99	218000	10400	1996
Sotac Pharma	102.8	-0.19	153600	7440	1965
Jindal Worldwid	70	-11.05	2478954	138074	1695
Sapphire Foods	320.6	-1.67	1191106	68650	1635
Shakti Pumps	806.55	2.73	641313	38631	1560
Jyoti CNC Auto	869.25	12.78	6076929	404144	1404
BEW Engineering	160	2.99	15000	1125	1233
Adani Green Ene	772.8	-3.89	5953544	480592	1139
Diamond Power	87.52	4.99	71013	6800	944
Blue Star	2105.35	3.58	3312056	333217	894
CreditAccess Gr	903.35	0.69	1945871	198052	883
Precision	28	-4.92	214000	22000	873
TIL	173.76	-4.73	275297	28463	867
AstraZeneca	7304.1	6.5	70821	7428	853
Varun Beverages	477.55	4.51	12983775	1424186	812

\* the Average Volume of last 5 days

Price Shockers - NSE				
Company name	LCP	3 days *	% Chg	Volume
Coffee Day	30.63	21.28	43.94	5121747
Lloyds Luxuries	87.05	70	24.36	54000
Nacl Industries	69.42	56.65	22.54	1352204
Indoco Remedies	235.8	196.47	20.02	394948
Guj Themis	262.7	218.91	20	568219
Vadilal Ind	4272.4	3586.3	19.13	86294
India Cements	295.2	253.4	16.5	13324261
Sundaram-Clayto	2255.6	1946.4	15.89	61118
Anupam Rasayan	729.65	632.4	15.38	515385
Ruby Mills	208.71	181.22	15.17	93469
Nitiraj Enginee	307.65	269.68	14.08	82684
Suven Life Sci	118.54	104.16	13.81	765376
MPS	2690.35	2364.9	13.76	269659
Hind Motors	25.46	22.45	13.41	2706562
Sun Pharma Adv	127.04	112.39	13.03	5197503
Foods and Inns	98.22	86.9	13.03	960199
TCPL Packaging	4413.35	3908.7	12.91	59996
Religare Enterp	253.22	224.76	12.66	4339200
Country Club	14.93	13.42	11.25	40693
Oriental Hotels	145.36	131.24	10.76	209572

\* the % price rise of the last 3 days

## Nifty 50 stocks - Summary Details

Symbol	LTP	Chng	% Chng	Volume (lacs)	Turnover (crs.)	52w High	Diff with 52w H	52w Low	Diff with 52w L	365 days % chng	30 days % chng
NIFTY 50	22082.65	-36.65	-0.17%	2532.60	22979.34	26277.35	15.96%	21281.45	3.76%	-5.91%	-0.98%
ADANIANT	2147.60	30.50	1.44%	8.53	182.02	3743.90	42.64%	2025.00	6.05%	-7.46%	-36.21%
ADANIPTS	1056.80	3.75	0.36%	17.89	188.24	1621.40	34.82%	995.65	6.14%	-4.21%	-20.35%
APOLLOHOSP	6199.95	29.35	0.48%	4.45	275.43	7545.35	17.83%	5693.20	8.90%	-9.40%	1.40%
ASIANPAINT	2128.00	-38.40	-1.77%	21.81	466.94	3394.90	37.32%	2124.75	0.15%	-5.84%	-23.50%
AXISBANK	1003.00	-4.25	-0.42%	57.86	580.15	1339.65	25.13%	933.50	7.45%	2.14%	-8.37%
BAJAJ-AUTO	7332.95	-381.85	-4.95%	10.79	801.50	12774.00	42.59%	7317.05	0.22%	-12.81%	-4.05%
BAJAJFINSV	1789.90	-48.65	-2.65%	14.43	259.66	2029.90	11.82%	1419.05	26.13%	5.90%	13.96%
BAJFINANCE	8576.35	-51.50	-0.60%	7.66	655.92	8739.00	1.86%	6187.80	38.60%	9.42%	31.29%
BEL	264.60	7.21	2.80%	249.98	658.23	340.50	22.29%	179.10	47.74%	-12.05%	25.19%
BHARTIARTL	1575.90	-19.90	-1.25%	52.20	822.19	1779.00	11.42%	1132.00	39.21%	-1.88%	41.38%
BPCL	249.60	7.19	2.97%	72.01	176.95	376.00	33.62%	234.01	6.66%	-7.16%	-61.11%
BRITANNIA	4577.00	-19.60	-0.43%	3.22	146.38	6469.90	29.26%	4506.00	1.58%	-10.39%	-6.72%
CIPLA	1404.00	-3.55	-0.25%	14.57	203.62	1702.05	17.51%	1317.25	6.59%	-4.86%	-4.31%
COALINDIA	363.50	3.15	0.87%	55.35	199.82	543.55	33.12%	349.25	4.08%	-8.98%	-19.27%
DRREDDY	1118.05	-1.55	-0.14%	10.74	119.98	1421.49	21.35%	1103.90	1.28%	-8.03%	-81.92%
EICHERMOT	4808.05	-98.55	-2.01%	6.38	308.55	5575.50	13.76%	3672.00	30.94%	-5.54%	27.66%
GRASIM	2395.85	18.40	0.77%	5.21	124.28	2877.75	16.75%	2128.60	12.56%	-5.24%	5.43%
HCLTECH	1536.50	-35.90	-2.28%	32.47	499.90	2012.20	23.64%	1235.00	24.41%	-8.87%	-4.36%
HDFCBANK	1711.30	9.75	0.57%	99.60	1699.56	1880.00	8.97%	1421.25	20.41%	0.16%	18.93%
HDFCLIFE	616.00	-2.00	-0.32%	32.62	200.80	761.20	19.08%	511.40	20.45%	-3.14%	4.75%
HEROMOTOCO	3509.60	-121.15	-3.34%	9.47	335.34	6246.25	43.81%	3495.00	0.42%	-16.33%	-19.44%
HINDALCO	640.00	3.45	0.54%	44.31	283.12	772.65	17.17%	501.20	27.69%	7.11%	22.63%
HINDUNILVR	2152.50	-24.35	-1.12%	18.00	387.93	3035.00	29.08%	2136.00	0.77%	-11.83%	-9.66%
ICICIBANK	1212.80	6.60	0.55%	95.74	1159.26	1362.35	10.98%	1048.10	15.71%	-3.72%	10.98%
INDUSINDBK	988.00	4.00	0.41%	32.71	323.53	1576.35	37.32%	923.70	6.96%	-0.73%	-35.55%
INFY	1684.00	-24.60	-1.44%	67.60	1139.77	2006.45	16.07%	1358.35	23.97%	-9.11%	3.26%
ITC	394.45	-3.00	-0.75%	134.05	528.66	528.50	25.36%	391.20	0.83%	-11.18%	-2.94%
JSWSTEEL	976.50	0.45	0.05%	10.77	104.75	1063.00	8.14%	761.75	28.19%	3.29%	16.72%
KOTAKBANK	1911.10	-3.50	-0.18%	31.72	605.45	1994.90	4.20%	1543.85	23.79%	0.70%	10.82%
LT	3211.00	13.70	0.43%	14.42	461.93	3963.50	18.99%	3141.00	2.23%	-10.37%	-12.00%
M&M	2612.85	0.95	0.04%	19.85	516.75	3270.95	20.12%	1788.80	46.07%	-12.64%	32.39%
MARUTI	11615.00	-160.60	-1.36%	2.56	297.70	13680.00	15.10%	10725.00	8.30%	-4.35%	1.33%
NESTLEIND	2145.00	-40.55	-1.86%	10.43	222.73	2778.00	22.79%	2118.00	1.27%	-5.52%	-15.99%
NTPC	313.55	-0.85	-0.27%	87.35	272.94	448.45	30.08%	292.80	7.09%	-2.96%	-8.47%
ONGC	226.99	1.86	0.83%	124.28	279.04	345.00	34.21%	215.48	5.34%	-14.27%	-16.79%
POWERGRID	254.10	1.60	0.63%	119.47	303.16	366.25	30.62%	247.30	2.75%	-16.29%	-12.23%
RELIANCE	1160.45	-10.80	-0.92%	113.77	1325.33	1608.80	27.87%	1156.00	0.38%	-7.42%	-60.75%
SBILIFE	1393.00	-15.50	-1.10%	9.77	137.01	1936.00	28.05%	1307.70	6.52%	-5.06%	-8.67%
SBIN	716.40	21.10	3.03%	143.86	1025.56	912.00	21.45%	680.00	5.35%	-10.04%	-9.60%
SHRIRAMFIN	633.90	12.60	2.03%	53.70	336.49	730.45	13.22%	438.60	44.53%	14.26%	-74.65%
SUNPHARMA	1565.00	-20.10	-1.27%	17.17	268.79	1960.35	20.17%	1377.20	13.64%	-9.11%	1.66%
TATACONSUM	953.10	-0.80	-0.08%	19.16	182.55	1256.44	24.14%	882.90	7.95%	-6.90%	-20.57%
TATAMOTORS	619.50	-1.65	-0.27%	118.78	738.15	1179.00	47.46%	606.30	2.18%	-13.26%	-36.45%
TATASTEEL	139.29	0.72	0.52%	286.35	398.36	184.60	24.54%	122.62	13.59%	2.93%	-7.59%
TCS	3533.00	39.95	1.14%	27.98	984.29	4592.25	23.07%	3457.00	2.20%	-15.06%	-14.69%
TECHM	1487.50	-5.55	-0.37%	23.86	353.71	1807.70	17.71%	1162.95	27.91%	-10.83%	17.40%
TITAN	3048.95	-33.05	-1.07%	11.86	360.20	3867.00	21.15%	3017.00	1.06%	-11.70%	-18.16%
TRENT	4984.30	37.40	0.76%	8.99	449.18	8345.00	40.27%	3750.25	32.91%	-14.01%	26.80%
ULTRACEMCO	10373.40	32.60	0.32%	3.53	365.74	12145.35	14.59%	9250.00	12.14%	-9.98%	2.03%
WIPRO	279.85	-3.70	-1.30%	93.32	261.80	324.60	13.79%	208.50	34.22%	-9.09%	-45.38%

## Disclaimer / Disclosures

### ANALYST CERTIFICATION

I, Mrs. Vaishali Parekh B.com, Research Analyst, author and the name subscribed to this report, hereby certify that all of the views expressed in this research report accurately reflect our views about the subject issuer(s) or securities. We also certify that no part of our compensation was, is, or will be directly or indirectly related to the specific recommendation(s) or view(s) in this report.

Terms & conditions and other disclosures:

Prabhudas Lilladher Pvt. Ltd, Mumbai, India (hereinafter referred to as "PL") is engaged in the business of Stock Broking, Portfolio Manager, Depository Participant and distribution for third party financial products. PL is a subsidiary of Prabhudas Lilladher Advisory Services Pvt Ltd. which has its various subsidiaries engaged in business of commodity broking, investment banking, financial services (margin funding) and distribution of third party financial/other products, details in respect of which are available at [www.plindia.com](http://www.plindia.com)

This document has been prepared by the Research Division of PL and is meant for use by the recipient only as information and is not for circulation. This document is not to be reported or copied or made available to others without prior permission of PL. It should not be considered or taken as an offer to sell or a solicitation to buy or sell any security.

The information contained in this report has been obtained from sources that are considered to be reliable. However, PL has not independently verified the accuracy or completeness of the same. Neither PL nor any of its affiliates, its directors or its employees accepts any responsibility of whatsoever nature for the information, statements and opinion given, made available or expressed herein or for any omission therein.

Recipients of this report should be aware that past performance is not necessarily a guide to future performance and value of investments can go down as well. The suitability or otherwise of any investments will depend upon the recipient's particular circumstances and, in case of doubt, advice should be sought from an independent expert/advisor.

Either PL or its affiliates or its directors or its employees or its representatives or its clients or their relatives may have position(s), make market, act as principal or engage in transactions of securities of companies referred to in this report and they may have used the research material prior to publication.

PL may from time to time solicit or perform investment banking or other services for any company mentioned in this document.

PL is registered as Research Analyst under Securities and Exchange Board of India (Research Analysts) Regulations, 2014 PL submits that no material disciplinary action has been taken on us by any Regulatory Authority impacting Equity Research Analysis activities.

PL or its research analysts or its associates or his relatives do not have any financial interest in the subject company.

PL or its research analysts or its associates or his relatives do not have actual/beneficial ownership of one per cent or more securities of the subject company at the end of the month immediately preceding the date of publication of the research report.

PL or its research analysts or its associates or his relatives do not have any material conflict of interest at the time of publication of the research report.

PL or its associates might have received compensation from the subject company in the past twelve months.

PL or its associates might have managed or co-managed public offering of securities for the subject company in the past twelve months or mandated by the subject company for any other assignment in the past twelve months.

PL or its associates might have received any compensation for investment banking or merchant banking or brokerage services from the subject company in the past twelve months.

PL or its associates might have received any compensation for products or services other than investment banking or merchant banking or brokerage services from the subject company in the past twelve months PL or its associates might have received any compensation or other benefits from the subject company or third party in connection with the research report.

PL encourages independence in research report preparation and strives to minimize conflict in preparation of research report. PL or its analysts did not receive any compensation or other benefits from the subject Company or third party in connection with the preparation of the research report. PL or its Research Analysts do not have any material conflict of interest at the time of publication of this report.

It is confirmed that Mrs.Vaishali Parekh B.com, Research Analyst of this report has not received any compensation from the companies mentioned in the report in the preceding twelve months compensation of our Research Analysts is not based on any specific merchant banking, investment banking or brokerage service transactions.

The Research analysts for this report certifies that all of the views expressed in this report accurately reflect his or her personal views about the subject company or companies and its or their securities, and no part of his or her compensation was, is or will be, directly or indirectly related to specific recommendations or views expressed in this report.

The research analysts for this report has not served as an officer, director or employee of the subject company PL or its research analysts have not engaged in market making activity for the subject company

Our sales people, traders, and other professionals or affiliates may provide oral or written market commentary or trading strategies to our clients that reflect opinions that are contrary to the opinions expressed herein, and our proprietary trading and investing businesses may make investment decisions that are inconsistent with the recommendations expressed herein. In reviewing these materials, you should be aware that any or all of the foregoing, among other things, may give rise to real or potential conflicts of interest.

PL and its associates, their directors and employees may (a) from time to time, have a long or short position in, and buy or sell the securities of the subject company or (b) be engaged in any other transaction involving such securities and earn brokerage or other compensation or act as a market maker in the financial instruments of the subject company or act as an advisor or lender/borrower to the subject company or may have any other potential conflict of interests with respect to any recommendation and other related information and opinions.