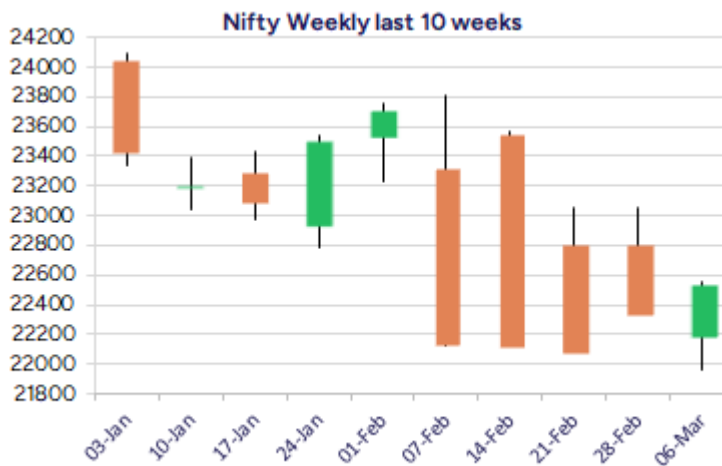
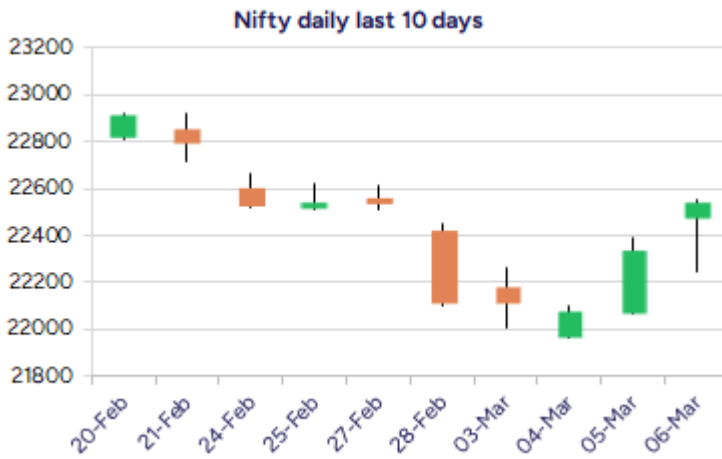


* Sensex 74340.09 + 609.86

* Nifty 22544.70 + 207.40

* Bank Nifty 48627.70 + 137.75



*Blue candle → Close rate > Open rate * Red candle → Close rate < Open rate

Market Preview

Nifty ends above 22500 zone

Nifty gained further on the weekly expiry day of the Derivative segment to end above the 22500 level with bias and sentiment easing out to some extent. The participation from the broader markets has been significant raising optimistic view for the coming sessions whereas BankNifty need to indicate further gains above the 49600 level to establish some conviction. The market breadth was once again strong with the advance decline indicating a ratio of 5:1 at close.

Market Forecast

Nifty daily range 22400-22800

Nifty continued with the positive move further ahead after the initial volatility witnessed in the morning session and closed above the 22500 zone which was important improving the bias and sentiment to some extent. The participation from the broader markets was significant to support the indices and further rise can be anticipated with next targets of 22800 and 23000 levels visible provided the zone near 22300 is sustained in the coming sessions.

BankNifty, once again underperformed as compared to Nifty index, and closing above the 48600 level is inching ahead with sentiment easing out to some extent and as we have mentioning, a decisive move past the 49600 level would establish conviction and thereafter, can expected for further upward move in the coming days. As of now, the crucial support zone of 47900 level needs to be sustained to maintain the overall bias intact.

The support for the day is seen at 22400 levels while the resistance is seen at 22800 levels. BankNifty would have the daily range of 48200-49200 levels.

Indices	Period	Closing	% Chng	Trend	Reversal	2 Sup	1 Sup	Pivot	1 Res	2 Res
Nifty	Daily	22544.70	0.93%	2	21816.10	22138	22342	22449	22652	22760
	Weekly	22124.70	-2.94%	-3	22686.90	21736	21930	22299	22494	22862
	Monthly	23508.40	-0.58%	-5	26264.60	22068	22788	23507	24228	24947
Bank Nifty	Daily	48627.70	0.28%	2	48262.00	48049	48338	48589	48878	49128
	Weekly	48344.70	-1.30%	-3	48721.55	47571	47958	48465	48852	49359
	Monthly	49587.20	-2.50%	-5	52793.25	45873	47730	49701	51559	53530
Sensex	Daily	74340.09	0.83%	2	72359.20	73074	73707	74049	74682	75024
	Weekly	73198.10	-2.81%	-3	75057.20	71983	72591	73749	74356	75515
	Monthly	77500.57	-0.82%	-5	85764.50	72808	75154	77614	79960	82419

Daily Trend turned Up

Scrip Name	LCP	Curr Trnd	Reversal
ASIANPAINT	2267.7	-6	2166.7
ASTRAL	1330.7	-4	1329.9
BALRAMCHIN	458.85	-5	446.7
BERGEPAIN	500.6	-4	495.05
CIPLA	1461.75	-6	1422.75
COLPAL	2452.1	-3	2423.15
DABUR	495	-5	490.55
DELTACORP	91.22	-5	90.35
DIVISLAB	5568.7	-8	5543.2
EMAMILTD	533.45	-5	530.35
GODFRYPHLP	5418.6	-9	5265.3
GODREJCP	1030.3	-4	1004.9

* Trends turned Up after a significant period

Daily Trend turned Up

Scrip Name	LCP	Curr Trnd	Reversal
GREAVESCOT	237.51	-8	236.45
HEROMOTOCO	3648.75	-5	3595.35
HINDUNILVR	2218.95	-5	2176.25
IGL	188.09	-4	183.35
INTELLECT	680.45	-5	661.5
IPCALAB	1362.15	-8	1359.7
JUBLPHARMA	919.95	-8	902.9
MARICO	607.7	-8	595.3
MUTHOOTFIN	2176.85	-8	2150.45
PETRONET	288.65	-4	285.7
RELIANCE	1209.6	-7	1176.35
STAR	621.35	-5	619.05

* Trends turned Up after a significant period

Gainers - Losers (Nifty 500 Stocks)

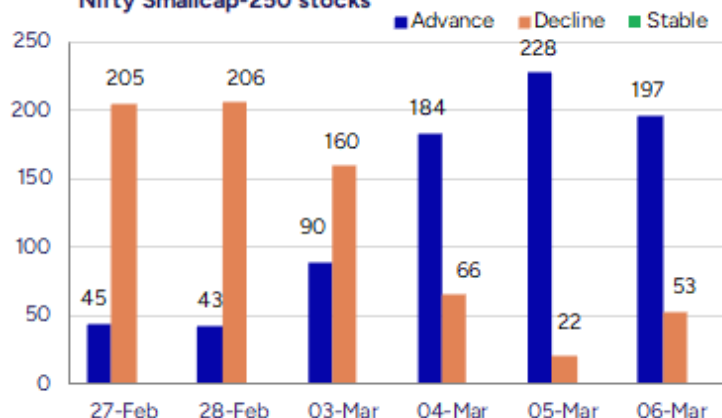
Gainers

Scrip Name	LCP	% Change	Volume
Capital Trust	90.93	19.99	211576
Kohinoor Foods	37.67	18.05	674678
Somi Conveyor	154.25	16.79	212201
Kirl Electric	142.08	16.45	1121487
Lancor Holdings	25.97	15.89	452170
Bharat Wire Rop	175.11	15.28	1181183
Khandwala Sec	23.24	14.31	40993

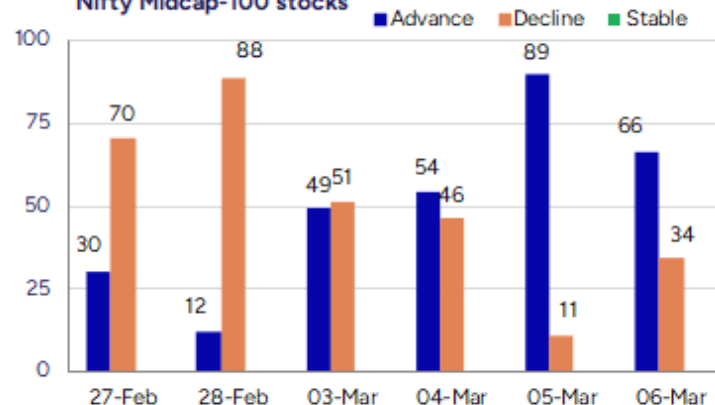
Losers

Scrip Name	LCP	% Change	Volume
Gensol Eng	334.8	-10	190415
DUGLOBAL	53.1	-8.45	35000
Lloyds Luxuries	84	-6.67	6000
BB Triplewall	147.13	-6.36	64972
Foods and Inns	93.85	-5.77	481160
AGS Transact	16.25	-5.03	96088
Shree Rama News	25.28	-5.03	8457

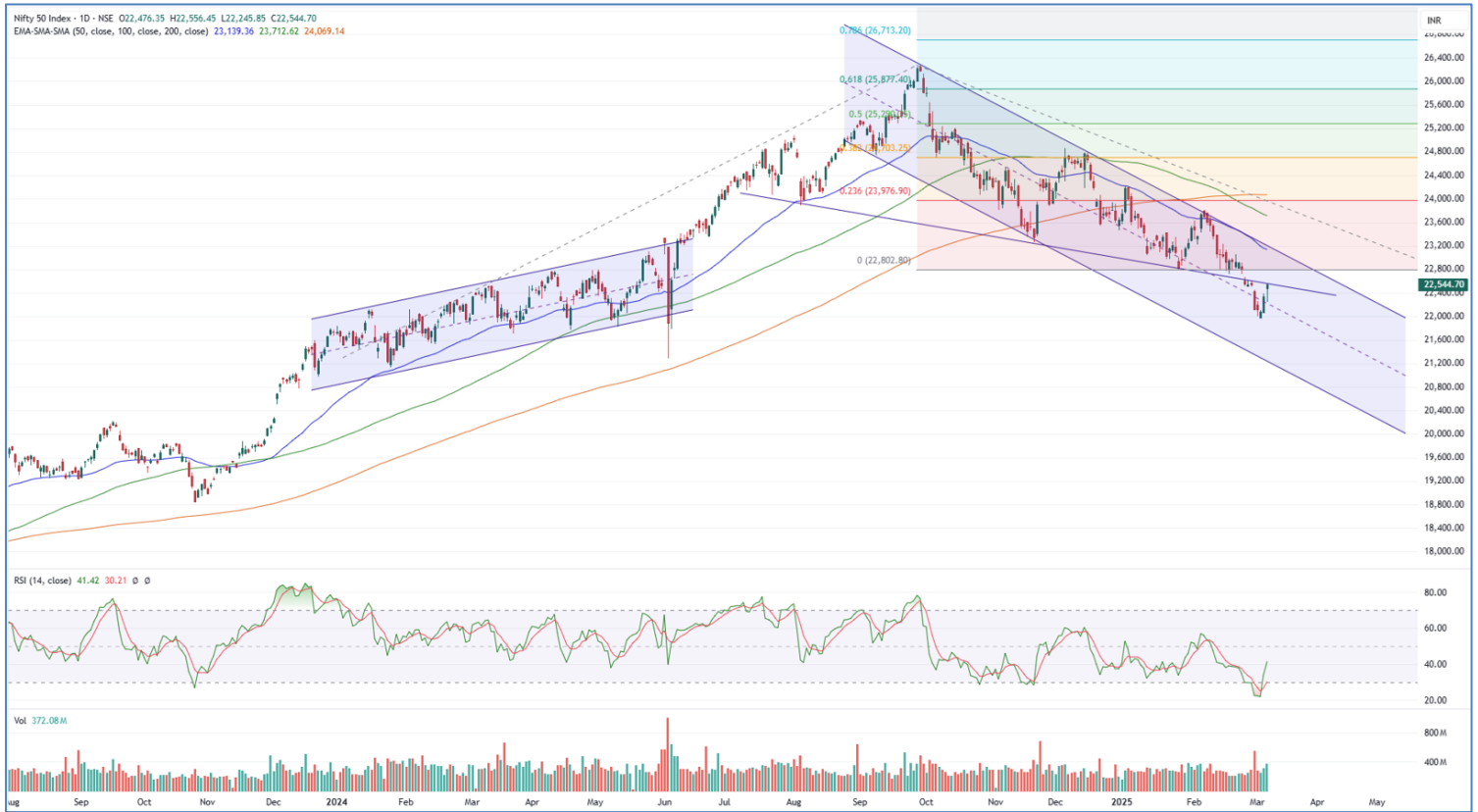
Nifty Smallcap-250 stocks



Nifty Midcap-100 stocks



Nifty Daily chart with RSI indicator



BankNifty Daily chart with RSI indicator



Breakouts - Cross above 200 DMA

Company Name	LCP	Change %	200 DMA
Chaman Lal Seti	302.75	5.04	288.23
Datamatics Glob	635.8	4.17	610.34
Sunflag Iron	240.16	3.86	231.24
Ganesh Housing	1087.25	3.68	1048.65
Star Cement	217.32	3.30	210.38
Hindalco	681.95	3.19	660.84
Nagreeka Cap	30.39	3.16	29.46
Caplin Labs	1933.65	2.56	1885.42
Unichem Labs	678.7	2.26	663.73
Gallantt Ispat	343.6	2.23	336.09
Eris Life	1269.6	2.15	1242.92
Cantabil Retail	259.43	2.13	254.02
Swaraj Engines	3065.85	2.13	3001.98
Globus Spirits	944.7	1.84	927.66
Polyplex Corp	1170.7	1.79	1150.11
Neogen	1877.05	1.78	1844.3
Unihealth Hospi	142.95	1.68	140.59
Sapphire Foods	326.3	166.00%	320.96

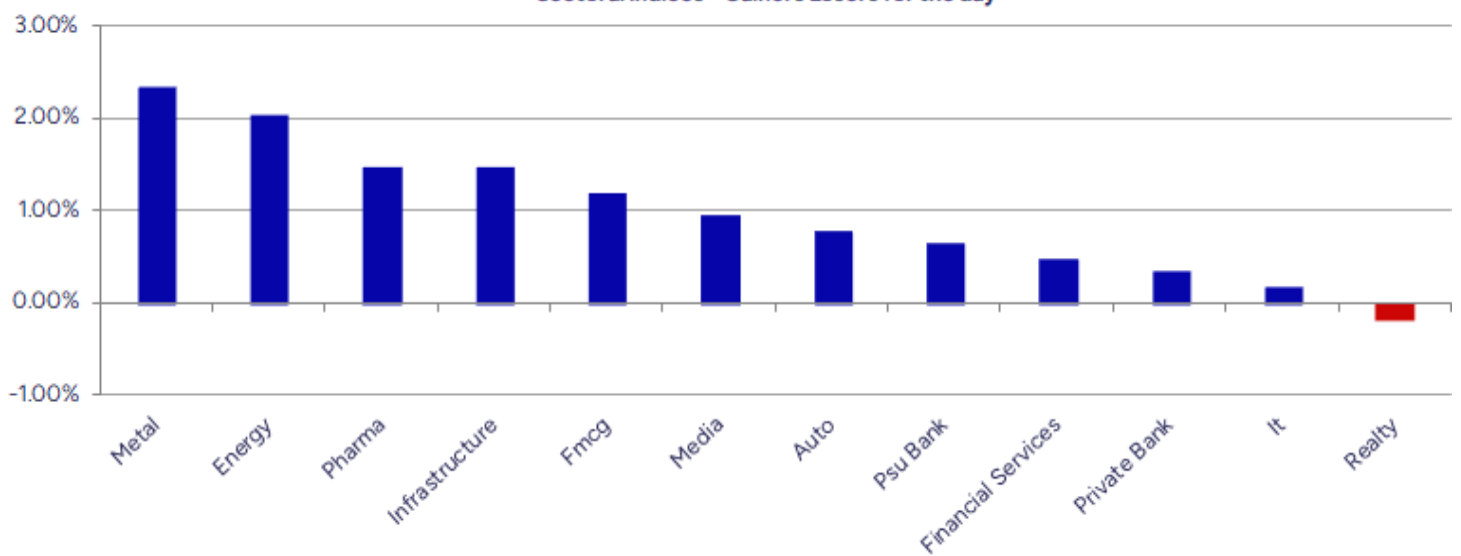
* Stocks crossing above its Simple Moving Average (200DMA)

Breakdown - Cross below 200 DMA

Company Name	LCP	Change %	200 DMA
Medplus Health	704.3	-2.09	719.35
Paradeep Phosph	93.25	-1.10	94.29

* Stocks crossing below its Simple Moving Average (200DMA)

S

Sectoral Indices - Gainers Losers for the day


Stocks witnessing a volume surge as compared to their 5 day average volume

Watch out for the stocks that have seen a huge spurt in its share price over the last three days

Volume Shockers - NSE					
Company name	LCP	% Chg	Volume	Avg Vol *	% Chg
BEW Engineering	151.6	-4.98	117000	1125	10300
Sapphire Foods	325.75	5.05	5761015	68650	8292
CreditAccess Gr	982.1	6.72	10838770	198052	5373
Somi Conveyor	155.8	17.97	207831	5503	3676
Route	1031.45	3.03	3111044	88491	3416
Chennai Petro	524.25	11.23	17895099	588532	2941
Diamond Power	92.95	1.15	181365	6800	2567
Atal	11.95	2.05	2451795	100889	2330
Touchwood Enter	81.84	-5	87360	3929	2123
Godawari Power	179.64	9.72	14268061	674028	2017
Adani Green Ene	843.55	-0.61	10089445	480592	1999
Krishna Institu	525	3.25	1133972	59456	1807
Vijaya Diagnost	1051.4	2.86	3733534	222272	1580
Jai Balaji Ind	141.87	6.39	745441	54390	1271
Praxis Home Ret	14.1	0.86	836454	62438	1240
MBL Infra	38.44	7.71	839604	65421	1183
Pashupati Cotsp	629.95	4.67	69800	5440	1183
Hitachi Energy	13571.6	2.88	275860	21966	1156
Jindal Worldwid	62.85	-2.33	1625663	138074	1077
Sky Gold	376.2	5	304876	25989	1073

* the Average Volume of last 5 days

Price Shockers - NSE				
Company name	LCP	3 days *	% Chg	Volume
Bharat Wire Rop	175.11	128.35	36.43	1181183
Man Industries	273.5	210.02	30.23	2102433
Capital Trust	90.93	70.23	29.47	211576
Manaksia Alumin	23.29	18.25	27.62	38171
Shigan Quantum	79.35	62.45	27.06	19500
Kirl Electric	142.08	112.73	26.04	1121487
Lancor Holdings	25.97	20.96	23.9	452170
MPS	2795.85	2265.6	23.4	33200
Coffee Day	31.48	25.53	23.31	1146358
Wanbury	197.64	160.29	23.3	124247
Lasa Supergener	23.79	19.3	23.26	57202
ICE Make Refrig	737.45	598.4	23.24	35950
Century Extr	20.27	16.49	22.92	93696
Kamdhenu	35.7	29.12	22.6	886419
Kohinoor Foods	37.67	30.89	21.95	674678
Sportking India	87.6	72.03	21.62	293986
Hind Motors	26.13	21.56	21.2	1836209
ORIENTAL AROMAT	324.65	268.8	20.78	48835
Ind-Swift Labs	103.16	85.45	20.73	154261
20 Microns	207.62	172.29	20.51	303590

* the % price rise of the last 3 days

Nifty 50 stocks - Summary Details

Symbol	LTP	Chng	% Chng	Volume (lacs)	Turnover (crs.)	52w High	Diff with 52w H	52w Low	Diff with 52w L	365 days % chng	30 days % chng
NIFTY 50	22544.70	207.40	0.93%	3720.65	30549.02	26277.35	14.20%	21281.45	5.94%	-4.38%	-0.08%
ADANIENT	2251.00	5.15	0.23%	8.90	200.36	3743.90	39.88%	2025.00	11.16%	-0.71%	-32.15%
ADANIPTS	1130.80	18.10	1.63%	40.20	453.92	1621.40	30.26%	995.65	13.57%	2.57%	-16.86%
APOLLOHOSP	6279.00	64.60	1.04%	2.84	178.41	7545.35	16.78%	5693.20	10.29%	-8.59%	2.53%
ASIANPAINT	2267.00	102.85	4.75%	19.85	445.70	3394.90	33.22%	2124.75	6.69%	-5.59%	-23.27%
AXISBANK	1034.00	19.55	1.93%	78.61	809.89	1339.65	22.82%	933.50	10.77%	2.53%	-7.84%
BAJAJ-AUTO	7452.00	31.70	0.43%	9.17	681.92	12774.00	41.66%	7301.00	2.07%	-16.87%	-11.15%
BAJAJFINSV	1842.50	40.70	2.26%	21.77	398.49	2029.90	9.23%	1419.05	29.84%	0.39%	16.21%
BAJFINANCE	8384.00	85.30	1.03%	8.81	739.16	8739.00	4.06%	6187.80	35.49%	-1.51%	31.22%
BEL	272.50	-2.42	-0.88%	225.78	619.78	340.50	19.97%	179.10	52.15%	0.28%	30.45%
BHARTIARTL	1625.00	6.75	0.42%	51.74	836.08	1779.00	8.66%	1133.05	43.42%	-2.06%	38.44%
BPCL	264.96	9.12	3.56%	128.28	337.77	376.00	29.53%	234.01	13.23%	2.52%	-60.34%
BRITANNIA	4690.00	-32.15	-0.68%	4.61	217.43	6469.90	27.51%	4506.00	4.08%	-7.51%	-2.14%
CIPLA	1460.50	40.75	2.87%	15.25	221.38	1702.05	14.19%	1317.25	10.87%	-0.06%	-3.64%
COALINDIA	382.15	13.90	3.77%	112.47	425.63	543.55	29.69%	349.25	9.42%	-1.54%	-20.06%
DRREDDY	1138.40	12.00	1.07%	16.49	187.01	1421.49	19.92%	1103.90	3.13%	-6.43%	-82.13%
EICHERMOT	5086.00	97.70	1.96%	6.48	327.77	5575.50	8.78%	3672.00	38.51%	-9.06%	31.55%
GRASIM	2388.20	-3.45	-0.14%	7.55	180.22	2877.75	17.01%	2128.60	12.20%	-3.31%	7.18%
HCLTECH	1582.65	9.70	0.62%	20.11	318.71	2012.20	21.35%	1235.00	28.15%	-7.04%	-2.87%
HDFCBANK	1692.40	2.40	0.14%	164.83	2779.25	1880.00	9.98%	1421.25	19.08%	0.72%	17.29%
HDFCLIFE	617.10	-4.10	-0.66%	24.91	153.91	761.20	18.93%	511.40	20.67%	-0.03%	2.22%
HEROMOTOCO	3658.00	69.25	1.93%	6.55	237.43	6246.25	41.44%	3495.00	4.66%	-16.28%	-21.81%
HINDALCO	680.45	23.10	3.51%	109.93	743.39	772.65	11.93%	501.20	35.76%	14.51%	25.90%
HINDUNILVR	2221.85	51.40	2.37%	18.57	409.37	3035.00	26.79%	2136.00	4.02%	-11.12%	-9.56%
ICICIBANK	1219.80	4.10	0.34%	119.49	1454.29	1362.35	10.46%	1048.10	16.38%	-2.98%	11.73%
INDUSINDBK	969.55	-2.30	-0.24%	39.28	382.08	1576.35	38.49%	923.70	4.96%	-4.03%	-36.99%
INFY	1712.00	0.50	0.03%	106.11	1814.03	2006.45	14.68%	1358.35	26.04%	-8.15%	6.54%
ITC	406.20	1.15	0.28%	178.70	721.33	528.50	23.14%	391.20	3.83%	-10.85%	-0.27%
JSWSTEEL	1007.00	4.30	0.43%	22.03	222.25	1063.00	5.27%	761.75	32.20%	7.36%	22.38%
KOTAKBANK	1920.15	-12.95	-0.67%	51.93	998.88	1994.90	3.75%	1543.85	24.37%	2.58%	12.67%
LT	3258.00	18.35	0.57%	18.55	602.41	3963.50	17.80%	3141.00	3.72%	-1.51%	-10.32%
M&M	2740.60	14.00	0.51%	37.06	1014.11	3270.95	16.21%	1788.80	53.21%	-14.08%	40.60%
MARUTI	11658.00	40.65	0.35%	3.15	366.12	13680.00	14.78%	10725.00	8.70%	-11.59%	-0.46%
NESTLEIND	2202.00	5.00	0.23%	12.57	275.93	2778.00	20.73%	2110.00	4.36%	-5.18%	-13.46%
NTPC	336.10	9.90	3.03%	262.90	875.32	448.45	25.05%	292.80	14.79%	4.80%	-8.95%
ONGC	232.25	3.31	1.45%	104.39	240.43	345.00	32.68%	215.48	7.78%	-8.06%	-19.32%
POWERGRID	266.35	1.95	0.74%	119.26	315.28	366.25	27.28%	247.30	7.70%	-6.84%	-10.37%
RELIANCE	1211.50	35.90	3.05%	144.68	1734.76	1608.80	24.70%	1156.00	4.80%	-5.64%	-60.82%
SBILIFE	1419.95	-0.75	-0.05%	16.07	226.82	1936.00	26.66%	1307.70	8.58%	-2.69%	-4.73%
SBIN	730.25	-0.10	-0.01%	109.29	799.36	912.00	19.93%	680.00	7.39%	-4.02%	-6.84%
SHRIRAMFIN	644.00	12.70	2.01%	80.76	519.84	730.45	11.84%	438.60	46.83%	15.59%	-74.04%
SUNPHARMA	1615.00	32.55	2.06%	24.59	394.00	1960.35	17.62%	1377.20	17.27%	-9.09%	0.52%
TATACONSUM	953.95	-2.85	-0.30%	24.21	230.94	1256.44	24.08%	882.90	8.05%	-7.67%	-20.31%
TATAMOTORS	638.90	-1.90	-0.30%	169.91	1089.63	1179.00	45.81%	606.30	5.38%	-6.79%	-37.29%
TATASTEEL	149.74	3.64	2.49%	791.21	1184.91	184.60	18.88%	122.62	22.12%	10.83%	-3.79%
TCS	3592.10	45.05	1.27%	27.87	995.23	4592.25	21.78%	3457.00	3.91%	-12.82%	-11.59%
TECHM	1501.90	-36.20	-2.35%	22.46	339.74	1807.70	16.92%	1162.95	29.15%	-7.05%	20.87%
TITAN	3125.00	38.45	1.25%	13.99	431.90	3867.00	19.19%	3017.00	3.58%	-13.79%	-17.71%
TRENT	5048.90	-57.20	-1.12%	15.00	755.11	8345.00	39.50%	3750.25	34.63%	-16.77%	32.55%
ULTRACEMCO	10469.90	5.70	0.05%	3.66	381.72	12145.35	13.79%	9250.00	13.19%	-6.36%	6.36%
WIPRO	285.25	0.15	0.05%	97.82	279.60	324.60	12.12%	208.50	36.81%	-9.09%	-44.46%

Disclaimer / Disclosures

ANALYST CERTIFICATION

I, Mrs. Vaishali Parekh B.com, Research Analyst, author and the name subscribed to this report, hereby certify that all of the views expressed in this research report accurately reflect our views about the subject issuer(s) or securities. We also certify that no part of our compensation was, is, or will be directly or indirectly related to the specific recommendation(s) or view(s) in this report.

Terms & conditions and other disclosures:

Prabhudas Lilladher Pvt. Ltd, Mumbai, India (hereinafter referred to as "PL") is engaged in the business of Stock Broking, Portfolio Manager, Depository Participant and distribution for third party financial products. PL is a subsidiary of Prabhudas Lilladher Advisory Services Pvt Ltd. which has its various subsidiaries engaged in business of commodity broking, investment banking, financial services (margin funding) and distribution of third party financial/other products, details in respect of which are available at www.plindia.com

This document has been prepared by the Research Division of PL and is meant for use by the recipient only as information and is not for circulation. This document is not to be reported or copied or made available to others without prior permission of PL. It should not be considered or taken as an offer to sell or a solicitation to buy or sell any security.

The information contained in this report has been obtained from sources that are considered to be reliable. However, PL has not independently verified the accuracy or completeness of the same. Neither PL nor any of its affiliates, its directors or its employees accepts any responsibility of whatsoever nature for the information, statements and opinion given, made available or expressed herein or for any omission therein.

Recipients of this report should be aware that past performance is not necessarily a guide to future performance and value of investments can go down as well. The suitability or otherwise of any investments will depend upon the recipient's particular circumstances and, in case of doubt, advice should be sought from an independent expert/advisor.

Either PL or its affiliates or its directors or its employees or its representatives or its clients or their relatives may have position(s), make market, act as principal or engage in transactions of securities of companies referred to in this report and they may have used the research material prior to publication.

PL may from time to time solicit or perform investment banking or other services for any company mentioned in this document.

PL is registered as Research Analyst under Securities and Exchange Board of India (Research Analysts) Regulations, 2014 PL submits that no material disciplinary action has been taken on us by any Regulatory Authority impacting Equity Research Analysis activities.

PL or its research analysts or its associates or his relatives do not have any financial interest in the subject company.

PL or its research analysts or its associates or his relatives do not have actual/beneficial ownership of one per cent or more securities of the subject company at the end of the month immediately preceding the date of publication of the research report.

PL or its research analysts or its associates or his relatives do not have any material conflict of interest at the time of publication of the research report.

PL or its associates might have received compensation from the subject company in the past twelve months.

PL or its associates might have managed or co-managed public offering of securities for the subject company in the past twelve months or mandated by the subject company for any other assignment in the past twelve months.

PL or its associates might have received any compensation for investment banking or merchant banking or brokerage services from the subject company in the past twelve months.

PL or its associates might have received any compensation for products or services other than investment banking or merchant banking or brokerage services from the subject company in the past twelve months PL or its associates might have received any compensation or other benefits from the subject company or third party in connection with the research report.

PL encourages independence in research report preparation and strives to minimize conflict in preparation of research report. PL or its analysts did not receive any compensation or other benefits from the subject Company or third party in connection with the preparation of the research report. PL or its Research Analysts do not have any material conflict of interest at the time of publication of this report.

It is confirmed that Mrs.Vaishali Parekh B.com, Research Analyst of this report has not received any compensation from the companies mentioned in the report in the preceding twelve months compensation of our Research Analysts is not based on any specific merchant banking, investment banking or brokerage service transactions.

The Research analysts for this report certifies that all of the views expressed in this report accurately reflect his or her personal views about the subject company or companies and its or their securities, and no part of his or her compensation was, is or will be, directly or indirectly related to specific recommendations or views expressed in this report.

The research analysts for this report has not served as an officer, director or employee of the subject company PL or its research analysts have not engaged in market making activity for the subject company

Our sales people, traders, and other professionals or affiliates may provide oral or written market commentary or trading strategies to our clients that reflect opinions that are contrary to the opinions expressed herein, and our proprietary trading and investing businesses may make investment decisions that are inconsistent with the recommendations expressed herein. In reviewing these materials, you should be aware that any or all of the foregoing, among other things, may give rise to real or potential conflicts of interest.

PL and its associates, their directors and employees may (a) from time to time, have a long or short position in, and buy or sell the securities of the subject company or (b) be engaged in any other transaction involving such securities and earn brokerage or other compensation or act as a market maker in the financial instruments of the subject company or act as an advisor or lender/borrower to the subject company or may have any other potential conflict of interests with respect to any recommendation and other related information and opinions.