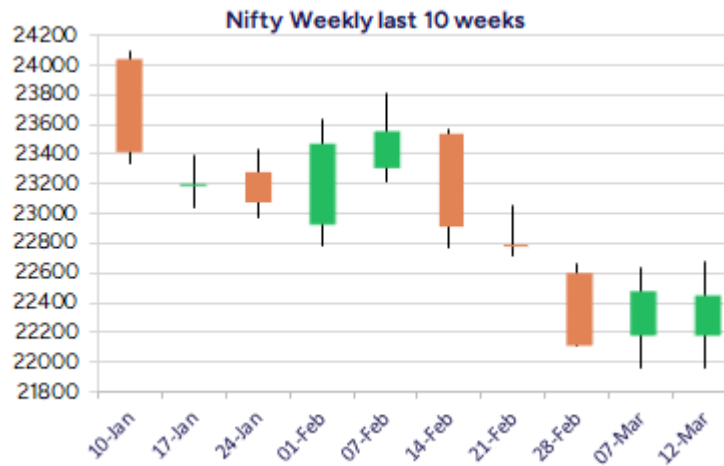
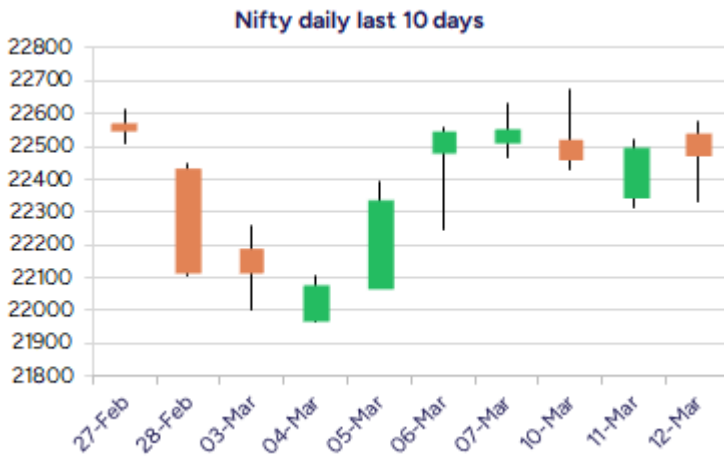


* Sensex 74029.76 -72.56

* Nifty 22470.50 -27.40

* Bank Nifty 48056.65 +202.70



*Blue candle → Close rate > Open rate * Red candle → Close rate < Open rate

Market Preview

Nifty manages to end flat amid volatility

Nifty after witnessing a weak session in the initial half, later on bounced back to end on a flat note near 22470 zone. BankNifty also indicated a decent pullback to improve the sentiment to some extent anticipating for further rise in the coming sessions. The market breadth was slightly weak with the advance decline indicating a ratio of 2:3 at close.

Market Forecast

Nifty daily range 22300-22700

Nifty once again witnessing a volatile session during the intraday session recovered strongly from 22330 level and almost closed on a flat note near 22470 levels to maintain the bias with a cautiously positive approach. We continue with our stance of the index having the crucial and important support zone of 22000 level as of now which needs to be sustained and on the upside, as mentioned earlier, only a decisive breach above 23000 level shall establish conviction to expect for further rise ahead.

BankNifty, has sustained the important and crucial support zone of 47800 levels once again and has closed above the 48000 level maintaining the bias intact and with most of the frontline banking stocks looking well set for further rise, we expect the index to gain strength in the coming days. The index, as mentioned earlier, would need a decisive breach above the 50EMA zone of 49500 levels to improve the bias and thereafter, trigger for further rise in the coming days.

The support for the day is seen at 22300 levels while the resistance is seen at 22700 levels. BankNifty would have the daily range of 47600-48600 levels.

Indices	Period	Closing	% Chng	Trend	Reversal	2 Sup	1 Sup	Pivot	1 Res	2 Res
Nifty	Daily	22470.50	-0.12%	6	22357.25	22211	22341	22459	22589	22707
	Weekly	22552.50	1.93%	-4	22652.75	21714	22133	22384	22803	23053
	Monthly	23508.40	-0.58%	-5	26264.60	22068	22788	23507	24228	24947
Bank Nifty	Daily	48056.65	0.42%	-3	48111.10	47664	47860	48041	48238	48418
	Weekly	48497.50	0.32%	-4	48749.05	47395	47946	48393	48944	49390
	Monthly	49587.20	-2.50%	-5	52793.25	45873	47730	49701	51559	53530
Sensex	Daily	74029.76	-0.10%	6	73796.80	73213	73621	74007	74415	74801
	Weekly	74332.58	1.55%	-4	74891.60	71898	73115	73851	75068	75804
	Monthly	77500.57	-0.82%	-5	85764.50	72808	75154	77614	79960	82419

Daily Trend turned Up

Scrip Name	LCP	Curr Trnd	Reversal
BAJFINANCE	8484.45	-8	8458.5
BATAIN	1229.1	-9	1211.6
BSE	4014.4	-10	3962.75
HDFCBANK	1711.15	-5	1691.5
INDIGO	4729.2	-2	4692.1
IPCALAB	1315.95	-3	1313.15
KEC	714.6	-1	685.8
KSCL	1064.9	-1	1057.75
MANAPPURAM	206.46	-1	203.9
PAGEIND	40123.4	-3	39961.7
UBL	1904.95	-2	1882.4

* Trends turned Up after a significant period

Daily Trend turned Down

Scrip Name	LCP	Curr Trnd	Reversal
AXISBANK	1011.2	5	1025.35
BERGEPAIN	482.6	4	497.9
GREENPLY	263.95	5	271.65
INDUSTOWER	324.65	5	328.1
LTI	4485.9	5	4669
LTTTS	4390.65	5	4652.95
MAITHANALL	897.2	5	903.6
PNB	86.9	5	88.2
RAMCOCEM	820.1	7	857.6
SIEMENS	4905.75	7	4974.8
TATAELXSI	5303.85	5	5414.8
TECHMAHINDRA	1438.3	5	1479.9

* Trends turned Down after a significant period

Gainers - Losers (Nifty 500 Stocks)

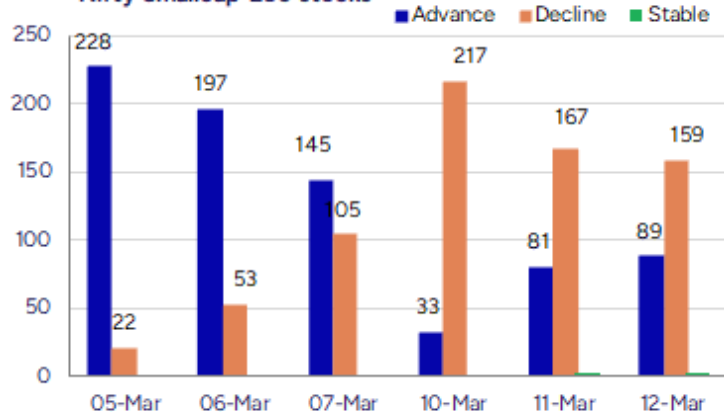
Gainers

Scrip Name	LCP	% Change	Volume
SEPC	15.34	19.84	56613418
Carysil	604.1	19.64	1287994
OCCL	90.14	16.1	2635423
India Tourism D	615.4	14.58	2048866
Redtape	154.66	12.69	2279530
Nacl Industries	79.58	11.75	7248681
Sharp Chucks	113	10.78	1000

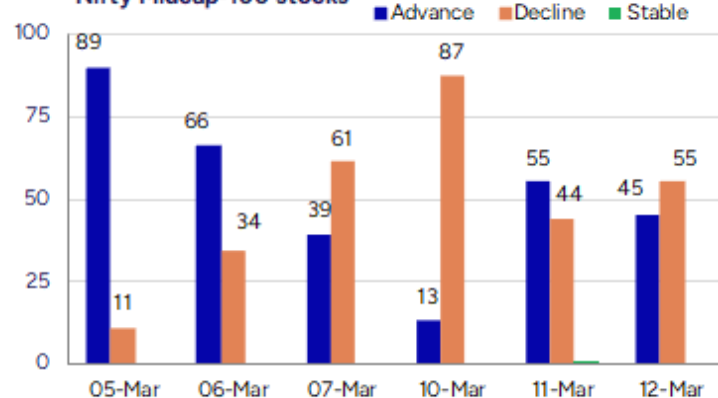
Losers

Scrip Name	LCP	% Change	Volume
Lloyds Luxuries	86	-10.32	9000
Compucom Soft	18.62	-9.79	212436
Sati Poly Plast	93	-9.71	27000
Indegene	522.55	-9.52	2913060
Auro Impex	52.75	-9.36	36800
Industrial Inv	236.8	-9.32	20401
Apex Ecotech	86.65	-8.21	65600

Nifty Smallcap-250 stocks



Nifty Midcap-100 stocks



Nifty Daily chart with RSI indicator



BankNifty Daily chart with RSI indicator



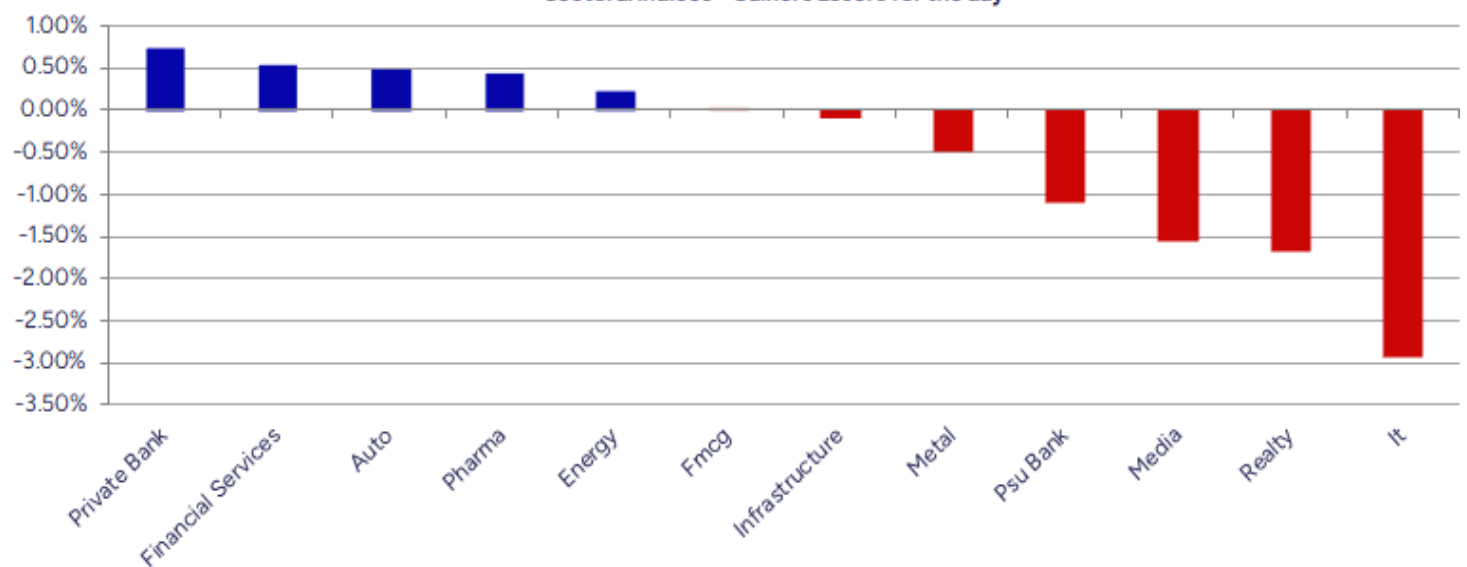
Breakouts - Cross above 200 DMA			
Company Name	LCP	Change %	200 DMA
Sundaram Fin	4658.4	2.47	4545.9
Swaraj Engines	3065	1.74	3012.58
Kitex Garments	163.52	1.37	161.31
HDFC Bank	1711.15	1.32	1688.89
Robust Hotels	210.44	0.82	208.73
Godfrey Phillip	5436.45	0.70	5398.68
Stove	760.95	0.54	756.88
BSE Limited	4014.4	0.39	3998.85
Nazara	935.5	0.10	934.56
Mah Seamless	652.1	0.04	651.86

Breakdown - Cross below 200 DMA			
Company Name	LCP	Change %	200 DMA
Wipro	268.55	-2.89	276.54
Abhishek	57.95	-2.75	59.59
Firstsource Sol	306.8	-2.55	314.84
Caplin Labs	1855.15	-2.25	1897.92
Sapphire Foods	314.75	-2.22	321.88
Polyplex Corp	1130.85	-2.20	1156.26
KDDL	2826.6	-2.17	2889.44
Beta Drugs	1662.7	-1.59	1689.61
Unichem Labs	660.15	-0.90	666.14
Innova Captab	775.65	-0.78	781.71
Sandur Manganes	473.6	-0.74	477.15
Sunflag Iron	230.26	-0.53	231.48
Dishman Carbogee	206.3	-0.40	207.13
Manaksia Coated	76.58	-0.38	76.87
Siyaram Silk	628.3	-0.03	628.49
Kanpur Plast	119.37	-0.03	119.4
ABSLLIQUID	999.99	0.00	1000

* Stocks crossing above its Simple Moving Average (200DMA)

* Stocks crossing below its Simple Moving Average (200DMA)

Sectoral Indices - Gainers Losers for the day



Stocks witnessing a volume surge as compared to their 5 day average volur

Watch out for the stocks that have seen a huge spurt in its share price over the last three days

Volume Shockers - NSE					
Company name	LCP	% Chg	Volume	Avg Vol *	% Chg
Diamond Power	88.19	-4.29	2062754	6800	30233
India Tourism D	615.4	14.58	2048866	40428	4968
IndusInd Bank	684.7	4.38	108660511	3162162	3336
BEW Engineering	144.6	-1.87	38500	1125	3322
Kaya	221.75	0.05	205712	6240	3196
Kamat Hotels	318.35	5	1425727	48751	2825
A B Infrabuild	85.71	3.64	434519	15200	2759
Redtape	154.66	12.69	2279530	92973	2352
HEG	406.15	1.64	1739707	80062	2073
Precision	26.05	-4.23	354000	22000	1509
Krishna Institu	549.7	4.32	887242	59456	1392
WE WIN	39.02	-5.01	70146	4848	1347
Data Patterns	1586.3	0.27	1536971	106334	1345
Jindal Drilling	900.65	-4.67	499365	34855	1333
Kaynes Tech	4330.2	0.91	2958604	215216	1275
Praxis Home Ret	12.49	-4.87	853766	62438	1267
Frog Cellsat	283.75	-7.81	454800	35760	1172
Total Transport	69.41	-3.4	163351	13024	1154
Nacl Industries	79.58	11.75	7248681	580493	1149
TTK Healthcare	1131.35	-1.11	60933	5973	920

* the Average Volume of last 5 days

Price Shockers - NSE				
Company name	LCP	3 days *	% Chg	Volume
Divine Power	126.05	102	23.58	63000
Kolte-Patil	338.75	276.1	22.69	2110918
ARSS Infra	34.45	29.77	15.72	14940
Stallion India	83.45	72.31	15.41	2632739
Polysil Irrigat	18.8	16.3	15.34	4000
Welspun Invest	812.05	704.4	15.28	2355
Nitiraj Enginee	381.5	333.1	14.53	157303
Sarda Energy	538.5	471.05	14.32	2174320
Nacl Industries	79.58	70.66	12.62	7248681
Carysil	604.1	536.8	12.54	1287994
ICE Make Refrig	825.45	733.6	12.52	135205
Sumit Woods	100.18	89.15	12.37	43197
Bodal Chemicals	62.93	56.82	10.75	909298
IRIS Business S	418	377.8	10.64	18437
Shreeoswal Seed	15.34	13.87	10.6	67598
Giriraj Civil D	281.1	255	10.24	250
Vadivarhe Speci	26.7	24.25	10.1	6000

* the % price rise of the last 3 days

Nifty 50 stocks - Summary Details											
Symbol	LTP	Chng	% Chng	Volume (lacs)	Turnover (crs.)	52w High	Diff with 52w H	52w Low	Diff with 52w L	365 days % chng	30 days % chng
NIFTY 50	22470.50	-27.40	-0.12%	3697.13	33404.30	26277.35	14.49%	21281.45	5.59%	-4.51%	0.74%
ADANIENT	2241.80	-8.80	-0.39%	10.49	233.97	3743.90	40.12%	2025.00	10.71%	-3.77%	-29.83%
ADANIPTS	1128.30	-6.70	-0.59%	28.43	321.74	1621.40	30.41%	995.65	13.32%	-0.97%	-14.47%
APOLLOHOSP	6143.75	8.95	0.15%	2.50	152.74	7545.35	18.58%	5693.20	7.91%	-9.66%	-1.13%
ASIANPAINT	2250.00	-37.40	-1.64%	7.49	169.43	3394.90	33.72%	2124.75	5.89%	0.72%	-20.49%
AXISBANK	1011.20	-14.45	-1.41%	75.05	757.52	1339.65	24.52%	933.50	8.32%	0.15%	-7.19%
BAJAJ-AUTO	7504.40	4.45	0.06%	5.29	397.44	12774.00	41.25%	7301.00	2.79%	-16.57%	-13.39%
BAJAJFINSV	1819.45	14.05	0.78%	11.97	217.22	2029.90	10.37%	1419.05	28.22%	0.39%	12.92%
BAJFINANCE	8484.45	144.00	1.73%	20.88	1752.66	8739.00	2.91%	6297.80	34.72%	-1.58%	29.64%
BEL	276.83	-0.35	-0.13%	153.08	424.35	340.50	18.70%	179.10	54.57%	0.05%	30.41%
BHARTIARTL	1642.85	-20.10	-1.21%	99.07	1645.80	1779.00	7.65%	1151.70	42.65%	-0.82%	38.97%
BPCL	266.32	1.74	0.66%	106.48	284.03	376.00	29.17%	234.01	13.81%	0.11%	-57.76%
BRITANNIA	4792.05	30.00	0.63%	2.23	106.21	6469.90	25.93%	4506.00	6.35%	-2.23%	-3.55%
CIPLA	1454.30	8.55	0.59%	12.55	181.59	1702.05	14.56%	1317.25	10.40%	-1.80%	-3.88%
COALINDIA	380.05	1.00	0.26%	39.49	149.57	543.55	30.08%	349.25	8.82%	0.21%	-16.49%
DRREDDY	1105.15	-11.50	-1.03%	19.15	210.86	1421.49	22.25%	1092.45	1.16%	-9.98%	-82.52%
EICHERMOT	5024.25	38.70	0.78%	2.35	117.57	5575.50	9.89%	3672.00	36.83%	-7.20%	31.76%
GRASIM	2398.90	-14.65	-0.61%	5.62	134.79	2877.75	16.64%	2128.60	12.70%	-2.98%	7.90%
HCLTECH	1540.60	-27.25	-1.74%	31.14	475.29	2012.20	23.44%	1235.00	24.74%	-9.14%	-4.32%
HDFCBANK	1711.15	25.65	1.52%	93.92	1606.37	1880.00	8.98%	1421.25	20.40%	-2.73%	18.05%
HDFCLIFE	631.80	-5.15	-0.81%	27.04	170.97	761.20	17.00%	511.40	23.54%	0.20%	2.59%
HEROMOTOCO	3610.25	-40.40	-1.11%	3.86	139.74	6246.25	42.20%	3495.00	3.30%	-14.60%	-21.86%
HINDALCO	689.85	-5.65	-0.81%	52.19	360.63	772.65	10.72%	501.20	37.64%	14.50%	30.32%
HINDUNILVR	2192.90	-24.05	-1.08%	15.26	337.22	3035.00	27.75%	2136.00	2.66%	-6.21%	-7.23%
ICICIBANK	1243.95	-1.45	-0.12%	115.48	1435.87	1362.35	8.69%	1048.10	18.69%	-0.91%	15.45%
INDUSINDBK	684.70	28.75	4.38%	1086.75	7306.97	1576.35	56.56%	606.00	12.99%	-39.21%	-57.43%
INFY	1590.85	-70.75	-4.26%	148.69	2358.92	2006.45	20.71%	1358.35	17.12%	-12.72%	3.81%
ITC	412.40	6.20	1.53%	138.44	567.25	528.50	21.97%	391.20	5.42%	-5.72%	-0.78%
JSWSTEEL	1010.40	-8.25	-0.81%	12.64	126.92	1063.00	4.95%	761.75	32.64%	3.86%	22.76%
KOTAKBANK	1982.55	47.35	2.45%	67.04	1327.87	1997.70	0.76%	1543.85	28.42%	0.31%	11.88%
LT	3193.65	-1.80	-0.06%	13.60	432.51	3963.50	19.42%	3141.00	1.68%	-4.24%	-12.23%
M&M	2650.00	4.40	0.17%	34.47	915.44	3270.95	18.98%	1788.80	48.14%	-17.28%	39.66%
MARUTI	11640.10	-6.85	-0.06%	2.49	289.65	13680.00	14.91%	10725.00	8.53%	-10.75%	2.21%
NESTLEIND	2195.50	-55.90	-2.48%	3.59	79.09	2778.00	20.97%	2110.00	4.05%	1.18%	-13.79%
NTPC	329.80	-0.50	-0.15%	69.85	230.73	448.45	26.46%	292.80	12.64%	4.21%	-5.07%
ONGC	224.20	-2.52	-1.11%	69.93	157.07	345.00	35.01%	215.48	4.05%	-8.91%	-17.26%
POWERGRID	267.10	-0.20	-0.07%	118.75	317.12	366.25	27.07%	247.30	8.01%	-3.90%	-6.39%
RELIANCE	1257.05	9.75	0.78%	119.76	1500.52	1608.80	21.86%	1156.00	8.74%	-1.53%	-57.48%
SBILIFE	1409.00	-8.25	-0.58%	7.34	103.50	1936.00	27.22%	1307.70	7.75%	-3.65%	-7.50%
SBIN	723.05	-6.80	-0.93%	55.47	402.95	912.00	20.72%	680.00	6.33%	-1.00%	-5.67%
SHRIRAMFIN	636.95	-1.30	-0.20%	53.78	342.86	730.45	12.80%	438.60	45.22%	14.06%	-74.27%
SUNPHARMA	1676.85	21.55	1.30%	23.89	399.39	1960.35	14.46%	1377.20	21.76%	-5.40%	3.87%
TATACONSUM	945.15	-14.70	-1.53%	16.19	153.50	1256.44	24.78%	882.90	7.05%	-6.01%	-21.37%
TATAMOTORS	668.30	20.25	3.12%	187.31	1246.86	1179.00	43.32%	606.30	10.23%	-8.31%	-36.96%
TATASTEEL	150.30	-0.45	-0.30%	263.77	394.98	184.60	18.58%	122.62	22.57%	8.99%	-1.76%
TCS	3506.20	-69.10	-1.93%	31.74	1112.44	4592.25	23.65%	3457.00	1.42%	-11.27%	-13.27%
TECHM	1438.30	-40.90	-2.77%	26.66	381.23	1807.70	20.43%	1162.95	23.68%	-12.58%	14.76%
TITAN	3019.35	-27.05	-0.89%	4.89	147.93	3867.00	21.92%	2996.05	0.78%	-11.05%	-18.77%
TRENT	5015.35	19.90	0.40%	10.26	516.86	8345.00	39.90%	3843.00	30.51%	-8.41%	24.74%
ULTRACEMCO	10520.40	81.15	0.78%	3.00	313.34	12145.35	13.38%	9250.00	13.73%	-10.32%	7.64%
WIPRO	268.55	-9.20	-3.31%	185.83	494.86	324.60	17.27%	208.50	28.80%	-12.66%	-46.02%

Disclaimer / Disclosures

ANALYST CERTIFICATION

I, Mrs. Vaishali Parekh B.com, Research Analyst, author and the name subscribed to this report, hereby certify that all of the views expressed in this research report accurately reflect our views about the subject issuer(s) or securities. We also certify that no part of our compensation was, is, or will be directly or indirectly related to the specific recommendation(s) or view(s) in this report.

Terms & conditions and other disclosures:

Prabhudas Lilladher Pvt. Ltd, Mumbai, India (hereinafter referred to as "PL") is engaged in the business of Stock Broking, Portfolio Manager, Depository Participant and distribution for third party financial products. PL is a subsidiary of Prabhudas Lilladher Advisory Services Pvt Ltd. which has its various subsidiaries engaged in business of commodity broking, investment banking, financial services (margin funding) and distribution of third party financial/other products, details in respect of which are available at www.plindia.com

This document has been prepared by the Research Division of PL and is meant for use by the recipient only as information and is not for circulation. This document is not to be reported or copied or made available to others without prior permission of PL. It should not be considered or taken as an offer to sell or a solicitation to buy or sell any security.

The information contained in this report has been obtained from sources that are considered to be reliable. However, PL has not independently verified the accuracy or completeness of the same. Neither PL nor any of its affiliates, its directors or its employees accepts any responsibility of whatsoever nature for the information, statements and opinion given, made available or expressed herein or for any omission therein.

Recipients of this report should be aware that past performance is not necessarily a guide to future performance and value of investments can go down as well. The suitability or otherwise of any investments will depend upon the recipient's particular circumstances and, in case of doubt, advice should be sought from an independent expert/advisor.

Either PL or its affiliates or its directors or its employees or its representatives or its clients or their relatives may have position(s), make market, act as principal or engage in transactions of securities of companies referred to in this report and they may have used the research material prior to publication.

PL may from time to time solicit or perform investment banking or other services for any company mentioned in this document.

PL is registered as Research Analyst under Securities and Exchange Board of India (Research Analysts) Regulations, 2014 PL submits that no material disciplinary action has been taken on us by any Regulatory Authority impacting Equity Research Analysis activities.

PL or its research analysts or its associates or his relatives do not have any financial interest in the subject company.

PL or its research analysts or its associates or his relatives do not have actual/beneficial ownership of one per cent or more securities of the subject company at the end of the month immediately preceding the date of publication of the research report.

PL or its research analysts or its associates or his relatives do not have any material conflict of interest at the time of publication of the research report.

PL or its associates might have received compensation from the subject company in the past twelve months.

PL or its associates might have managed or co-managed public offering of securities for the subject company in the past twelve months or mandated by the subject company for any other assignment in the past twelve months.

PL or its associates might have received any compensation for investment banking or merchant banking or brokerage services from the subject company in the past twelve months.

PL or its associates might have received any compensation for products or services other than investment banking or merchant banking or brokerage services from the subject company in the past twelve months PL or its associates might have received any compensation or other benefits from the subject company or third party in connection with the research report.

PL encourages independence in research report preparation and strives to minimize conflict in preparation of research report. PL or its analysts did not receive any compensation or other benefits from the subject Company or third party in connection with the preparation of the research report. PL or its Research Analysts do not have any material conflict of interest at the time of publication of this report.

It is confirmed that Mrs. Vaishali Parekh B.com, Research Analyst of this report has not received any compensation from the companies mentioned in the report in the preceding twelve months compensation of our Research Analysts is not based on any specific merchant banking, investment banking or brokerage service transactions.

The Research analysts for this report certifies that all of the views expressed in this report accurately reflect his or her personal views about the subject company or companies and its or their securities, and no part of his or her compensation was, is or will be, directly or indirectly related to specific recommendations or views expressed in this report.

The research analysts for this report has not served as an officer, director or employee of the subject company PL or its research analysts have not engaged in market making activity for the subject company

Our sales people, traders, and other professionals or affiliates may provide oral or written market commentary or trading strategies to our clients that reflect opinions that are contrary to the opinions expressed herein, and our proprietary trading and investing businesses may make investment decisions that are inconsistent with the recommendations expressed herein. In reviewing these materials, you should be aware that any or all of the foregoing, among other things, may give rise to real or potential conflicts of interest.

PL and its associates, their directors and employees may (a) from time to time, have a long or short position in, and buy or sell the securities of the subject company or (b) be engaged in any other transaction involving such securities and earn brokerage or other compensation or act as a market maker in the financial instruments of the subject company or act as an advisor or lender/borrower to the subject company or may have any other potential conflict of interests with respect to any recommendation and other related information and opinions.

Regd. Office: 3rd Floor, Sadhana House, 570, P. B. Marg, Behind Mahindra Tower, Worli, Mumbai - 400 018, India.