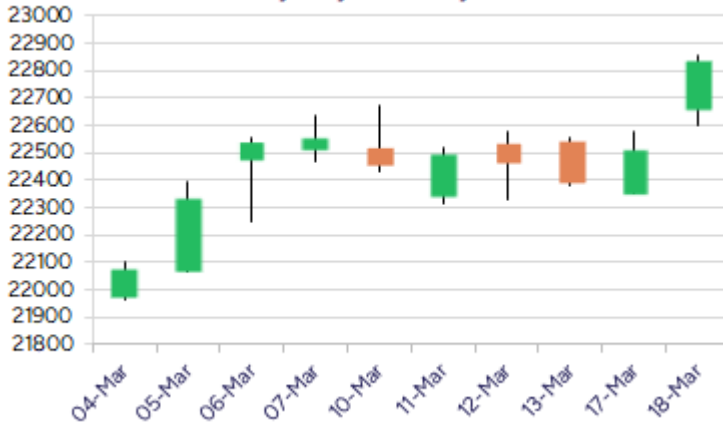


* Sensex 75301.26 + 1131.31

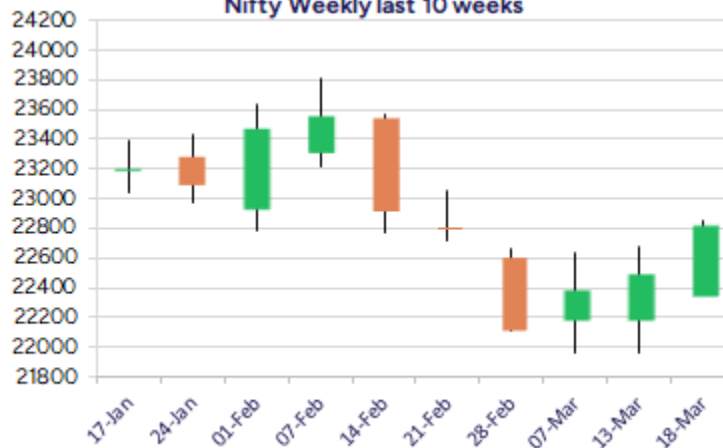
* Nifty 22834.30 + 325.55

* Bank Nifty 49314.50 + 960.35

Nifty daily last 10 days



Nifty Weekly last 10 weeks



*Blue candle → Close rate > Open rate * Red candle → Close rate < Open rate

Market Preview

Nifty gains strength; ends above 22800 zone

Nifty has finally breached above the resistance zone of 22700 level with sentiment getting better and bias improving anticipating for further rise. BankNifty has indicated a strong move closing above the 49000 zone with most of the frontline banking stocks like ICICI Bank, Kotak Bank and HDFC Bank gaining strength. The market breadth was quite strong with the advance decline indicating a positive ratio of 6:1 at close.

Market Forecast

Nifty daily range 22700-23000

Nifty, after a long wait, has indicated a strong bullish candle formation on the daily chart decisively breaching above the 22650 hurdle with active participation witnessed from the broader markets as well, to strengthen the bias and with the sentiment easing out there is scope for further upward movement. The 23000 zone would be the crucial and important resistance zone which if decisively breached shall trigger for fresh upward move with targets of 23800 and 24200 levels possible in the coming days.

BankNifty, has indicated a strong gain moving past the 49000 zone convincingly and also the important 50EMA zone at 49200 has been breached to strengthen the bias and we can expect for further more positive move in the coming sessions. As mentioned earlier, the frontline banking stocks like ICICI Bank, HDFC Bank, Axis Bank and Kotak Bank has been well positioned technically indicating strength, which can help the index to carry on with their positive move further ahead.

The support for the day is seen at 22700 levels while the resistance is seen at 23000 levels. BankNifty would have the daily range of 48900-50000 levels.

Indices	Period	Closing	% Chng	Trend	Reversal	2 Sup	1 Sup	Pivot	1 Res	2 Res
Nifty	Daily	22834.30	1.45%	9	22410.80	22505	22670	22764	22928	23022
	Weekly	22397.20	-0.69%	-5	22562.50	22101	22249	22463	22611	22825
	Monthly	23508.40	-0.58%	-5	26264.60	22068	22788	23507	24228	24947
Bank Nifty	Daily	49314.50	1.99%	2	47944.70	48344	48829	49115	49600	49886
	Weekly	48060.40	-0.90%	-5	48619.15	47225	47642	48121	48539	49017
	Monthly	49587.20	-2.50%	-5	52793.25	45873	47730	49701	51559	53530
Sensex	Daily	75301.26	1.53%	9	73735.15	74150	74726	75056	75631	75961
	Weekly	73828.91	-0.68%	-5	74562.50	72913	73371	74056	74514	75199
	Monthly	77500.57	-0.82%	-5	85764.50	72808	75154	77614	79960	82419

Daily Trend turned Up

Scrip Name	LCP	Curr Trnd	Reversal
ASHOKLEY	203.74	-12	200
CHOLAFIN	1515.25	-5	1455.6
DIXON	13470.15	-6	13192.3
EXIDEIND	342.75	-5	339
GLAXO	2795.15	-5	2710.8
GODREJPROP	2028	-2	1989.8
GREAVESCOT	218.2	-5	213.2
HDFCAMC	3827.6	-3	3767.15
HSCL	420.85	-4	408.05
CUMMINS	2929.65	-3	2871.65
LARSENTOUBRO	3270.7	-5	3190.15
LICHSGFIN	539.8	-2	523.55

* Trends turned Up after a significant period

Daily Trend turned Up

Scrip Name	LCP	Curr Trnd	Reversal
PEL	916.35	-2	896.7
PFCL	401.9	-2	395.75
SIEMENS	5107.6	-3	4963.6
SRTRANSFIN	642.3	-2	624.5
TATAPOWER	362.7	-2	352.4
TCS	3552.45	-3	3516.6
TITAN	3081.7	-3	3022.85
TORNTPOWER	1375.95	-3	1320.45
TVSMOTOR	2311.75	-3	2268.75
UNIONBANK	117.7	-3	114.65
VIPIND	292.05	-3	282.45
WABAG	1390.35	-3	1340

* Trends turned Up after a significant period

Gainers - Losers (Nifty 500 Stocks)

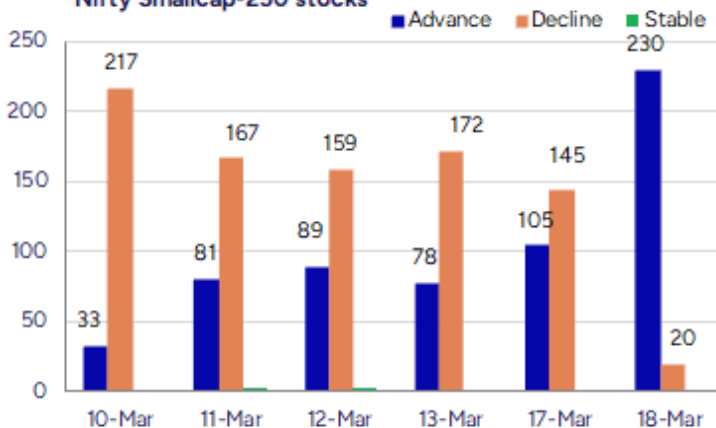
Gainers

Scrip Name	LCP	% Change	Volume
One Mobikwik	297.95	20	32701384
Uttam Sugar	230.9	20	778057
TT	12.67	19.98	570938
Sindhu Trade	15.99	19.95	3191598
Gulshan Poly	182.49	17.32	862752
Talbro's Auto	246.71	16.13	1157096
Raymond	1428.3	15.99	4254903

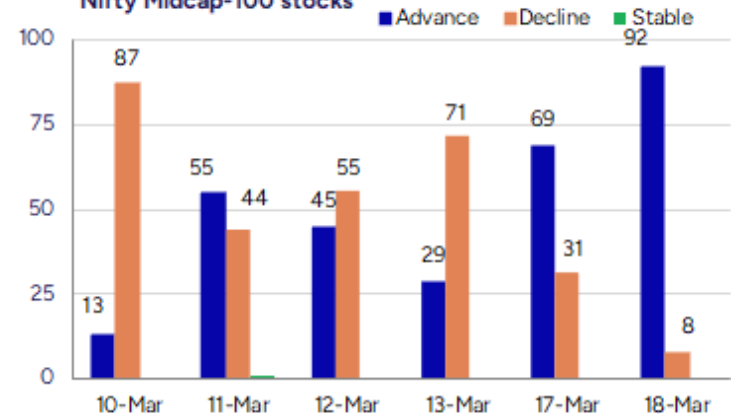
Losers

Scrip Name	LCP	% Change	Volume
Rockingdeals	353	-10.37	79250
Unilex Colours	50.25	-9.78	70400
Nacl Industries	100.17	-9.63	6688213
Paramount Dye	46.75	-8.87	124800
Beacon Trustees	60.35	-7.3	140000
Ashapura Logist	64.9	-7.29	103000
Innovana	315.75	-6.79	52259

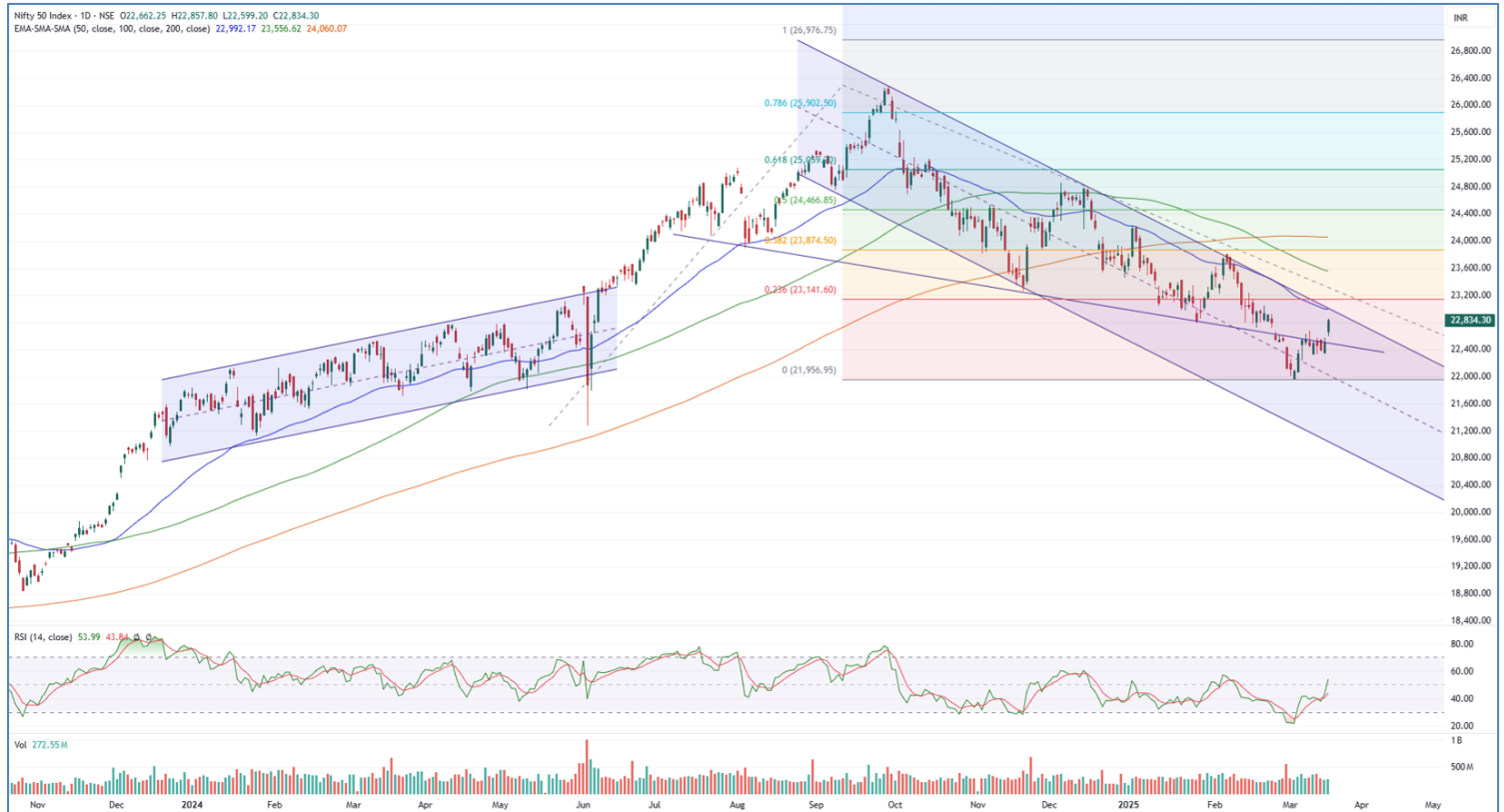
Nifty Smallcap-250 stocks



Nifty Midcap-100 stocks



Nifty Daily chart with RSI indicator



BankNifty Daily chart with RSI indicator



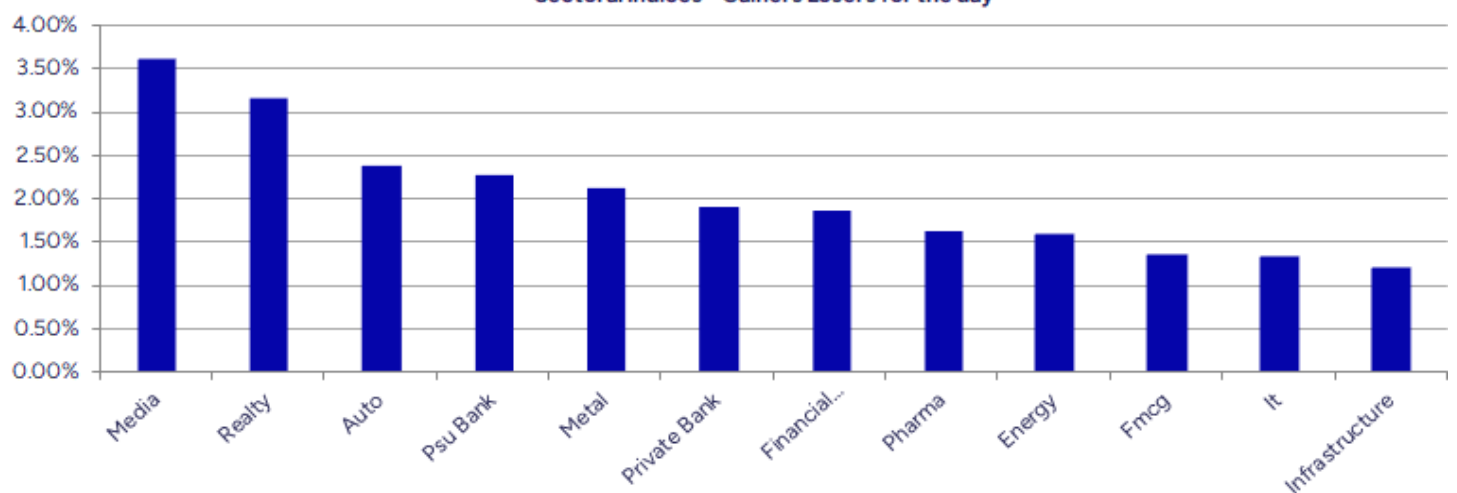
Breakouts - Cross above 200 DMA			
Company Name	LCP	Change %	200 DMA
Jeena Sikho	1682.45	5.74	1591.17
Chola Fin Hold	1658.7	5.02	1579.37
Alivus Life	1065.75	3.88	1025.96
RPG Life	2217.5	3.77	2136.86
Pennar Inds	185.33	3.33	179.35
BSE Limited	4146.7	3.20	4018.15
Kitex Garments	167.87	3.18	162.7
Mcleod	33.63	2.84	32.7
Godrej Agrovet	767.05	2.82	745.99
Raghav Producti	499.2	2.76	485.77
Aadhar Housing	427.95	2.08	419.24
Star Cement	213.57	1.78	209.84
MVK Agro Food P	46.2	1.74	45.41
Windlas	902.2	1.47	889.13
Vedanta	460	1.36	453.81
Minda Corp	527.95	1.33	521.01
Indostar Capita	267.56	1.29	264.14
General Insuran	403.1	125.00%	398.11

* Stocks crossing above its Simple Moving Average (200DMA)

Breakdown - Cross below 200 DMA			
Company Name	LCP	Change %	200 DMA
Hitachi Energy	11954	-4.86	12564.74
Sagardeep Alloy	28.17	-3.00	29.04
SMVD Poly Pack	11.5	-2.79	11.83
Robust Hotels	205.92	-1.55	209.17
Heads UP Vent	12.11	-1.22	12.26
Veekayem Fashio	234.55	-0.13	234.86
LIQUIDSBI	999.99	0.00	1000

* Stocks crossing below its Simple Moving Average (200DMA)

Sectoral Indices - Gainers Losers for the day



Stocks witnessing a volume surge as compared to their 5 day average volume

Watch out for the stocks that have seen a huge spurt in its share price over the last three days

Volume Shockers - NSE					
Company name	LCP	% Chg	Volume	Avg Vol *	% Chg
Atal	13.07	4.64	4625833	100889	4485
Jindal Drilling	950	5.88	1255197	34855	3501
Mastek	2432.2	15.1	4578489	142734	3108
BEW Engineering	147.1	-1.08	29500	1125	2522
Destiny Logisti	74.9	4.98	144000	6000	2300
Kamat Hotels	328.5	-2.84	1168991	48751	2298
Kaya	232.25	7.77	146749	6240	2252
Hitachi Energy	11915.2	-5.91	423056	21966	1826
Mindteck	177	10.47	802886	45376	1669
India Tourism D	585.8	3.59	703708	40428	1641
Triveni Turbine	572.85	12.54	20219526	1165130	1635
A B Infrabuild	95.99	9.98	243716	15200	1503
Jai Balaji Ind	140	3.98	803942	54390	1378
HP Adhesives	50.44	11.89	3050438	214783	1320
De Neers	287	7.19	83400	5880	1318
HEG	418.3	3.37	1106660	80062	1282
Elgi Equipments	504	-0.21	12992097	954395	1261
Thomas Scott	303.65	5	54357	4062	1238
Centum Electron	1567	16.78	185626	14212	1206
Transwarranty	13.4	3.96	160714	12848	1151

* the Average Volume of last 5 days

Price Shockers - NSE				
Company name	LCP	3 days *	% Chg	Volume
Uttam Sugar	230.9	186.52	23.79	778057
Centum Electron	1548.1	1282.55	20.7	188288
TT	12.67	10.57	19.87	570938
Talbros Auto	246.71	209.53	17.74	1157096
Sindhu Trade	15.99	13.6	17.57	3191598
BLB	15.47	13.18	17.37	212416
Raymond	1428.3	1224.1	16.68	4254903
Gulshan Poly	182.49	156.63	16.51	862752
Greenlam Ind	535.3	467.3	14.55	87470
MPS	2886.2	2522.35	14.43	47394
Elgi Equipments	507.25	443.5	14.37	13183832
Udayshivakumar	41.81	36.56	14.36	288643
Asahi Songwon	325.85	285.8	14.01	27692
Transformers	421.6	374.25	12.65	1193302
Indraprastha	355	315.45	12.54	527636
Gabriel India	572.05	509.6	12.25	5422481
Triveni Turbine	576.05	514.25	12.02	20359515
Indo Amines	122.76	109.71	11.89	303392
Banka Biolo	87.77	78.61	11.65	29795
TD Power System	356.7	320.9	11.16	1401043

* the % price rise of the last 3 days

Nifty 50 stocks - Summary Details											
Symbol	LTP	Chng	% Chng	Volume (lacs)	Turnover (crs.)	52w High	Diff with 52w H	52w Low	Diff with 52w L	365 days % chng	30 days % chng
NIFTY 50	22834.30	325.55	1.45%	2725.68	26386.34	26277.35	13.10%	21281.45	7.30%	-1.83%	2.20%
ADANIENT	2304.55	51.85	2.30%	8.78	201.16	3743.90	38.45%	2025.00	13.80%	4.65%	-28.08%
ADANIPTS	1158.00	20.85	1.83%	18.65	214.77	1621.40	28.58%	995.65	16.31%	7.01%	-11.37%
APOLLOHOSP	6240.35	83.70	1.36%	3.08	192.18	7545.35	17.30%	5693.20	9.61%	-1.82%	2.90%
ASIANPAINT	2275.00	55.45	2.50%	8.16	184.66	3394.90	32.99%	2124.75	7.07%	-0.53%	-22.60%
AXISBANK	1045.00	10.85	1.05%	73.66	768.18	1339.65	21.99%	933.50	11.94%	3.67%	-1.17%
BAJAJ-AUTO	7625.00	138.95	1.86%	3.55	268.90	12774.00	40.31%	7301.00	4.44%	-12.00%	-10.35%
BAJAJFINSV	1846.50	-25.10	-1.34%	43.42	802.84	2029.90	9.03%	1419.05	30.12%	1.65%	19.10%
BAJFINANCE	8694.00	113.65	1.32%	11.03	949.39	8739.00	0.51%	6375.70	36.36%	2.24%	31.71%
BEL	285.60	5.67	2.03%	152.89	432.99	340.50	16.12%	182.50	56.49%	11.82%	48.23%
BHARTIARTL	1632.00	-7.15	-0.44%	65.40	1068.92	1779.00	8.26%	1183.10	37.94%	-4.54%	34.36%
BPCL	262.20	0.78	0.30%	55.49	145.00	376.00	30.27%	234.01	12.05%	4.15%	-55.42%
BRITANNIA	4764.20	89.30	1.91%	2.42	115.12	6469.90	26.36%	4506.00	5.73%	-5.36%	-6.02%
CIPLA	1509.05	16.45	1.10%	15.71	236.66	1702.05	11.34%	1317.25	14.56%	2.27%	0.31%
COALINDIA	388.80	3.05	0.79%	62.12	242.17	543.55	28.47%	349.25	11.32%	8.91%	-7.10%
DRREDDY	1163.00	12.30	1.07%	17.35	201.55	1421.49	18.18%	1092.45	6.46%	-3.87%	-81.69%
EICHERMOT	5104.80	54.55	1.08%	3.28	167.75	5575.50	8.44%	3672.00	39.02%	7.38%	34.83%
GRASIM	2424.90	25.55	1.06%	4.24	102.47	2877.75	15.74%	2131.00	13.79%	-1.31%	9.21%
HCLTECH	1560.95	15.80	1.02%	29.31	455.19	2012.20	22.43%	1235.00	26.39%	-9.71%	-6.20%
HDFCBANK	1735.60	25.20	1.47%	109.54	1894.16	1880.00	7.68%	1421.25	22.12%	0.92%	17.74%
HDFCLIFE	640.00	10.20	1.62%	20.95	133.41	761.20	15.92%	511.40	25.15%	0.57%	-0.40%
HEROMOTOCO	3559.65	66.55	1.91%	5.34	189.02	6246.25	43.01%	3461.60	2.83%	-9.56%	-23.82%
HINDALCO	696.80	16.05	2.36%	59.54	415.15	772.65	9.82%	516.35	34.95%	12.30%	27.83%
HINDUNILVR	2204.90	33.65	1.55%	14.75	324.74	3035.00	27.35%	2136.00	3.23%	-6.35%	-6.72%
ICICIBANK	1311.50	42.50	3.35%	156.45	2033.16	1362.35	3.73%	1048.10	25.13%	0.71%	17.46%
INDUSINDBK	681.05	3.65	0.54%	121.18	822.27	1576.35	56.80%	606.00	12.38%	-33.87%	-54.36%
INFY	1608.20	18.15	1.14%	62.98	1009.20	2006.45	19.85%	1358.35	18.39%	-14.35%	-2.69%
ITC	409.50	1.55	0.38%	138.60	567.57	528.50	22.52%	391.20	4.68%	-0.56%	-2.66%
JSWSTEEL	1016.50	10.80	1.07%	10.69	108.61	1063.00	4.37%	778.50	30.57%	4.26%	28.83%
KOTAKBANK	2035.15	42.05	2.11%	53.84	1089.04	2039.00	0.19%	1543.85	31.82%	2.08%	14.66%
LT	3271.00	97.55	3.07%	20.30	659.39	3963.50	17.47%	3141.00	4.14%	-1.98%	-10.28%
M&M	2785.00	79.85	2.95%	35.22	975.57	3270.95	14.86%	1801.05	54.63%	-8.07%	50.33%
MARUTI	11693.00	139.30	1.21%	3.73	434.99	13680.00	14.52%	10725.00	9.03%	-8.88%	0.67%
NESTLEIND	2200.00	25.65	1.18%	4.24	93.05	2778.00	20.81%	2110.00	4.27%	-0.98%	-16.49%
NTPC	337.50	5.85	1.76%	85.80	288.29	448.45	24.74%	292.80	15.27%	10.42%	4.85%
ONGC	232.49	2.75	1.20%	96.47	222.51	345.00	32.61%	215.48	7.89%	-0.33%	-11.21%
POWERGRID	270.50	3.15	1.18%	88.99	240.80	366.25	26.14%	247.30	9.38%	3.89%	0.53%
RELIANCE	1239.95	1.10	0.09%	157.46	1950.85	1608.80	22.93%	1156.00	7.26%	1.77%	-56.32%
SBILIFE	1457.80	23.55	1.64%	6.56	95.25	1936.00	24.70%	1307.70	11.48%	-2.13%	-4.38%
SBIN	737.65	14.50	2.01%	80.87	591.40	912.00	19.12%	680.00	8.48%	0.14%	-1.20%
SHRIRAMFIN	641.95	18.70	3.00%	69.15	441.82	730.45	12.12%	438.60	46.36%	15.60%	-72.51%
SUNPHARMA	1748.75	44.45	2.61%	27.31	473.26	1960.35	10.79%	1377.20	26.98%	0.22%	10.08%
TATACONSUM	948.05	7.60	0.81%	23.44	221.61	1250.10	24.16%	882.90	7.38%	-8.03%	-22.41%
TATAMOTORS	678.80	17.75	2.69%	112.36	758.38	1179.00	42.43%	606.30	11.96%	-2.88%	-30.11%
TATASTEEL	154.60	2.79	1.84%	381.25	585.91	184.60	16.25%	122.62	26.08%	12.90%	7.13%
TCS	3545.65	47.95	1.37%	30.69	1083.43	4592.25	22.79%	3457.00	2.56%	-11.11%	-17.10%
TECHM	1432.90	-7.20	-0.50%	32.80	471.16	1807.70	20.73%	1162.95	23.21%	-13.20%	12.31%
TITAN	3088.00	70.65	2.34%	8.66	265.09	3867.00	20.14%	2985.05	3.45%	-6.10%	-16.95%
TRENT	5258.00	98.45	1.91%	9.95	520.21	8345.00	36.99%	3843.00	36.82%	0.82%	26.96%
ULTRACEMCO	10690.00	142.90	1.35%	3.55	378.58	12145.35	11.98%	9250.00	15.57%	-6.36%	9.49%
WIPRO	261.50	1.65	0.63%	114.48	298.56	324.60	19.44%	208.50	25.42%	-15.66%	-49.74%

Disclaimer / Disclosures

ANALYST CERTIFICATION

I, Mrs. Vaishali Parekh B.com, Research Analyst, author and the name subscribed to this report, hereby certify that all of the views expressed in this research report accurately reflect our views about the subject issuer(s) or securities. We also certify that no part of our compensation was, is, or will be directly or indirectly related to the specific recommendation(s) or view(s) in this report.

Terms & conditions and other disclosures:

Prabhudas Lilladher Pvt. Ltd, Mumbai, India (hereinafter referred to as "PL") is engaged in the business of Stock Broking, Portfolio Manager, Depository Participant and distribution for third party financial products. PL is a subsidiary of Prabhudas Lilladher Advisory Services Pvt Ltd. which has its various subsidiaries engaged in business of commodity broking, investment banking, financial services (margin funding) and distribution of third party financial/other products, details in respect of which are available at www.plindia.com

This document has been prepared by the Research Division of PL and is meant for use by the recipient only as information and is not for circulation. This document is not to be reported or copied or made available to others without prior permission of PL. It should not be considered or taken as an offer to sell or a solicitation to buy or sell any security.

The information contained in this report has been obtained from sources that are considered to be reliable. However, PL has not independently verified the accuracy or completeness of the same. Neither PL nor any of its affiliates, its directors or its employees accepts any responsibility of whatsoever nature for the information, statements and opinion given, made available or expressed herein or for any omission therein.

Recipients of this report should be aware that past performance is not necessarily a guide to future performance and value of investments can go down as well. The suitability or otherwise of any investments will depend upon the recipient's particular circumstances and, in case of doubt, advice should be sought from an independent expert/advisor.

Either PL or its affiliates or its directors or its employees or its representatives or its clients or their relatives may have position(s), make market, act as principal or engage in transactions of securities of companies referred to in this report and they may have used the research material prior to publication.

PL may from time to time solicit or perform investment banking or other services for any company mentioned in this document.

PL is registered as Research Analyst under Securities and Exchange Board of India (Research Analysts) Regulations, 2014 PL submits that no material disciplinary action has been taken on us by any Regulatory Authority impacting Equity Research Analysis activities.

PL or its research analysts or its associates or his relatives do not have any financial interest in the subject company.

PL or its research analysts or its associates or his relatives do not have actual/beneficial ownership of one per cent or more securities of the subject company at the end of the month immediately preceding the date of publication of the research report.

PL or its research analysts or its associates or his relatives do not have any material conflict of interest at the time of publication of the research report.

PL or its associates might have received compensation from the subject company in the past twelve months.

PL or its associates might have managed or co-managed public offering of securities for the subject company in the past twelve months or mandated by the subject company for any other assignment in the past twelve months.

PL or its associates might have received any compensation for investment banking or merchant banking or brokerage services from the subject company in the past twelve months.

PL or its associates might have received any compensation for products or services other than investment banking or merchant banking or brokerage services from the subject company in the past twelve months PL or its associates might have received any compensation or other benefits from the subject company or third party in connection with the research report.

PL encourages independence in research report preparation and strives to minimize conflict in preparation of research report. PL or its analysts did not receive any compensation or other benefits from the subject Company or third party in connection with the preparation of the research report. PL or its Research Analysts do not have any material conflict of interest at the time of publication of this report.

It is confirmed that Mrs. Vaishali Parekh B.com, Research Analyst of this report has not received any compensation from the companies mentioned in the report in the preceding twelve months compensation of our Research Analysts is not based on any specific merchant banking, investment banking or brokerage service transactions.

The Research analysts for this report certifies that all of the views expressed in this report accurately reflect his or her personal views about the subject company or companies and its or their securities, and no part of his or her compensation was, is or will be, directly or indirectly related to specific recommendations or views expressed in this report.

The research analysts for this report has not served as an officer, director or employee of the subject company PL or its research analysts have not engaged in market making activity for the subject company

Our sales people, traders, and other professionals or affiliates may provide oral or written market commentary or trading strategies to our clients that reflect opinions that are contrary to the opinions expressed herein, and our proprietary trading and investing businesses may make investment decisions that are inconsistent with the recommendations expressed herein. In reviewing these materials, you should be aware that any or all of the foregoing, among other things, may give rise to real or potential conflicts of interest.

PL and its associates, their directors and employees may (a) from time to time, have a long or short position in, and buy or sell the securities of the subject company or (b) be engaged in any other transaction involving such securities and earn brokerage or other compensation or act as a market maker in the financial instruments of the subject company or act as an advisor or lender/borrower to the subject company or may have any other potential conflict of interests with respect to any recommendation and other related information and opinions.