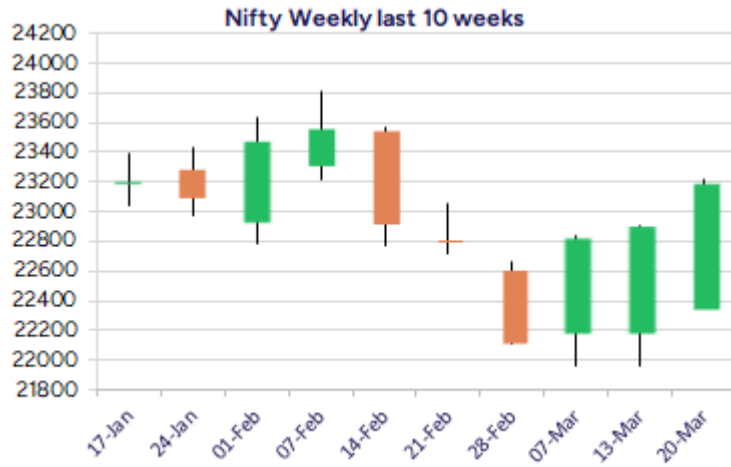
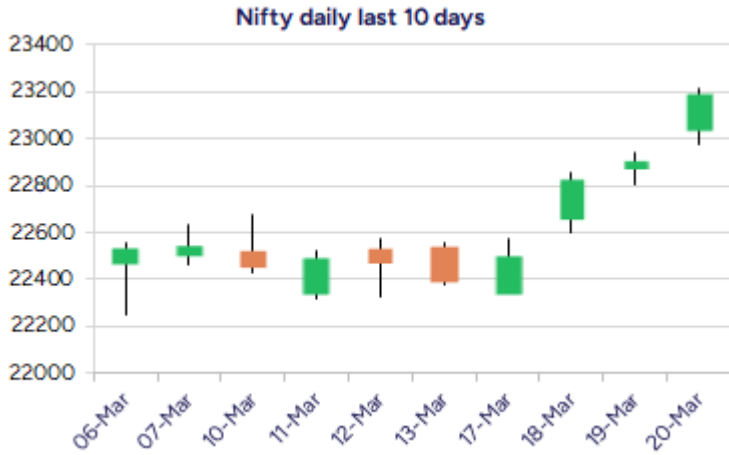


* Sensex 76348.06 + 899.01

* Nifty 23190.65 + 283.05

* Bank Nifty 50062.85 + 360.25



*Blue candle → Close rate > Open rate * Red candle → Close rate < Open rate

Market Preview

Nifty indicates a strong close near 23200 zone

Nifty after a long wait, indicated a strong close above the 23000 zone to strengthen the bias and can anticipate for further rise in the coming days. BankNifty scaled the 50000 zone with frontline banking stocks continue to show strength for further upward movement in the coming sessions. The market breadth was strong once again with the advance decline indicating a ratio of 2:1 at close.

Market Forecast

Nifty daily range 23100-23400

Nifty, with a bullish candle formation has indicated a robust move decisively moving past the 23000 zone and also the important 50EMA level to indicate a clear breakout above the descending channel pattern on the daily chart after a six month time period to signify strength and can anticipate for further rise in the coming days. The index has opened the gates on the upside with targets of 23800 and 24200 levels expected with support now maintained near 22800 zone, with the broader markets also actively participating in the rally.

BankNifty, extended the gains further ahead closing above the 50000 zone with bias improving and sentiment eased out to expect for further rise in the coming sessions. As mentioned earlier, we can expect the index to move ahead for next targets of 50900 (200 period MA) and 51800 levels in the coming days with most of the frontline banking stocks supporting the index. The support for the day is seen at 23100 levels while the resistance is seen at 23400 levels. BankNifty would have the daily range of 49600-50600 levels.

Indices	Period	Closing	% Chng	Trend	Reversal	2 Sup	1 Sup	Pivot	1 Res	2 Res
Nifty	Daily	23190.65	1.24%	11	22662.55	22884	23037	23127	23280	23370
	Weekly	22397.20	-0.69%	-5	22562.50	22101	22249	22463	22611	22825
	Monthly	23508.40	-0.58%	-5	26264.60	22068	22788	23507	24228	24947
Bank Nifty	Daily	50062.85	0.72%	4	48754.95	49613	49838	49997	50222	50380
	Weekly	48060.40	-0.90%	-5	48619.15	47225	47642	48121	48539	49017
	Monthly	49587.20	-2.50%	-5	52793.25	45873	47730	49701	51559	53530
Sensex	Daily	76348.06	1.19%	11	74537.00	75391	75870	76163	76641	76935
	Weekly	73828.91	-0.68%	-5	74562.50	72913	73371	74056	74514	75199
	Monthly	77500.57	-0.82%	-5	85764.50	72808	75154	77614	79960	82419

Daily Trend turned Up

Scrip Name	LCP	Curr Trnd	Reversal
BANDHANBNK	141.52	-6	140.9
BERGEPAIN	507.85	-1	499.7
BHARTIARTEL	1705.25	-2	1638.6
BRITANNIA	4831.1	-1	4717.6
DABUR	499	-1	495.95
EMAMILTD	567.2	-1	558.9
FORTIS	627.35	-8	610
FSL	306.6	-8	290.45
HINDALCO	705.95	-4	698
INFY	1615.55	-1	1586.75
LTI	4421.15	-5	4375.6
NATIONALUM	190.57	-4	187.75

* Trends turned Up after a significant period

Daily Trend turned Up

Scrip Name	LCP	Curr Trnd	Reversal
NAVINFLUOR	4168.45	-1	4150.3
NESTLEIND	2221.55	-5	2201.7
RELIANCE	1269.15	-2	1246.6
ZEETELE	103.17	-1	102.75

* Trends turned Up after a significant period

Gainers - Losers (Nifty 500 Stocks)

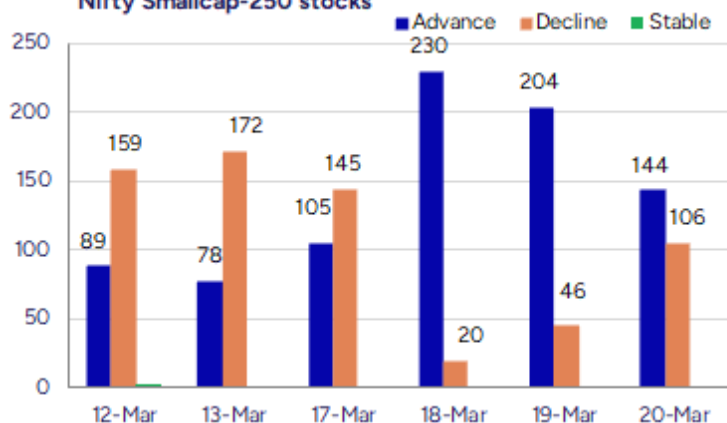
Gainers

Scrip Name	LCP	% Change	Volume
Vibhor Steel	186.99	20	572083
Sanginita Chemi	11.73	19.94	231699
Rajesh Exports	187.58	18.24	14953092
Manugraph Ind	17.82	18.17	175801
WOL 3D India	134.75	17.17	35000
SML Isuzu	1431	15.21	265295
IKIO Lighting	257.93	13.04	1422135

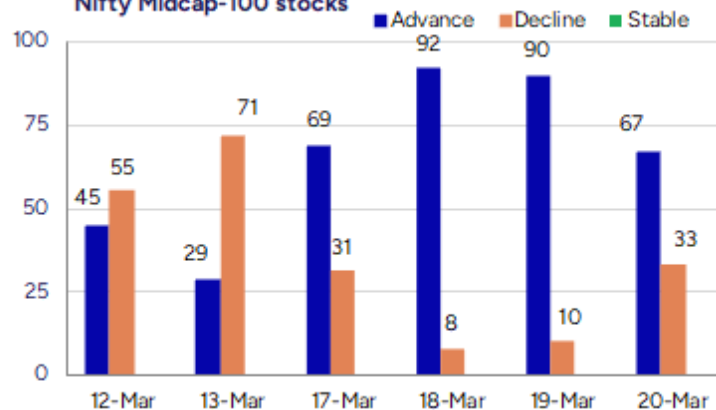
Losers

Scrip Name	LCP	% Change	Volume
KEI Industries	2841.1	-13.47	8379543
Rockingdeals	279.55	-10	199250
Neelam Linens	22.9	-9.84	378000
P S Raj Steels	136.5	-9.6	123000
Praxis Home Ret	10.87	-9.27	892225
Premium Plast	33.5	-8.09	210000
Khandwala Sec	23.8	-7.82	121025

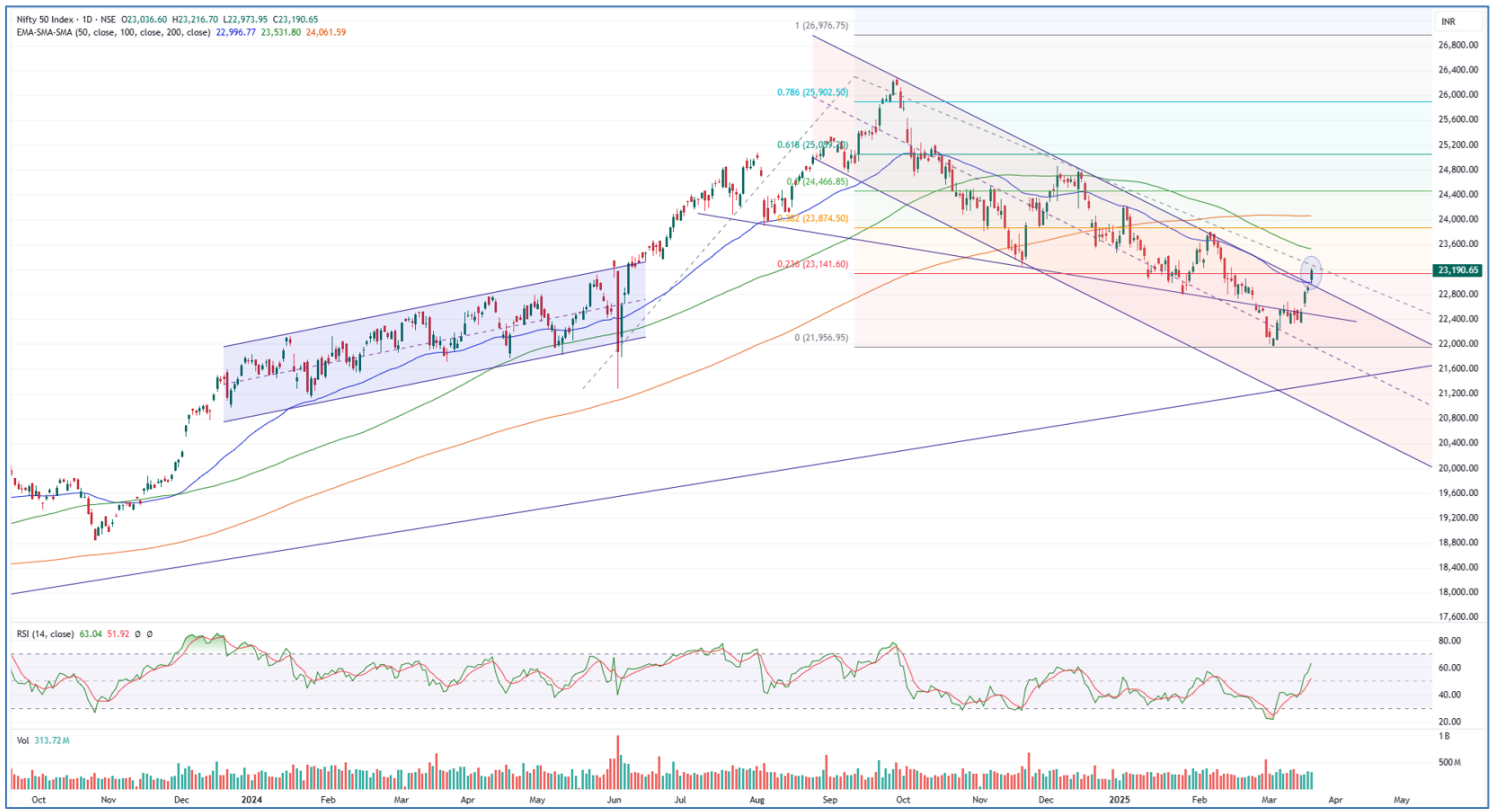
Nifty Smallcap-250 stocks



Nifty Midcap-100 stocks



Nifty Daily chart with RSI indicator



BankNifty Daily chart with RSI indicator



Breakouts - Cross above 200 DMA

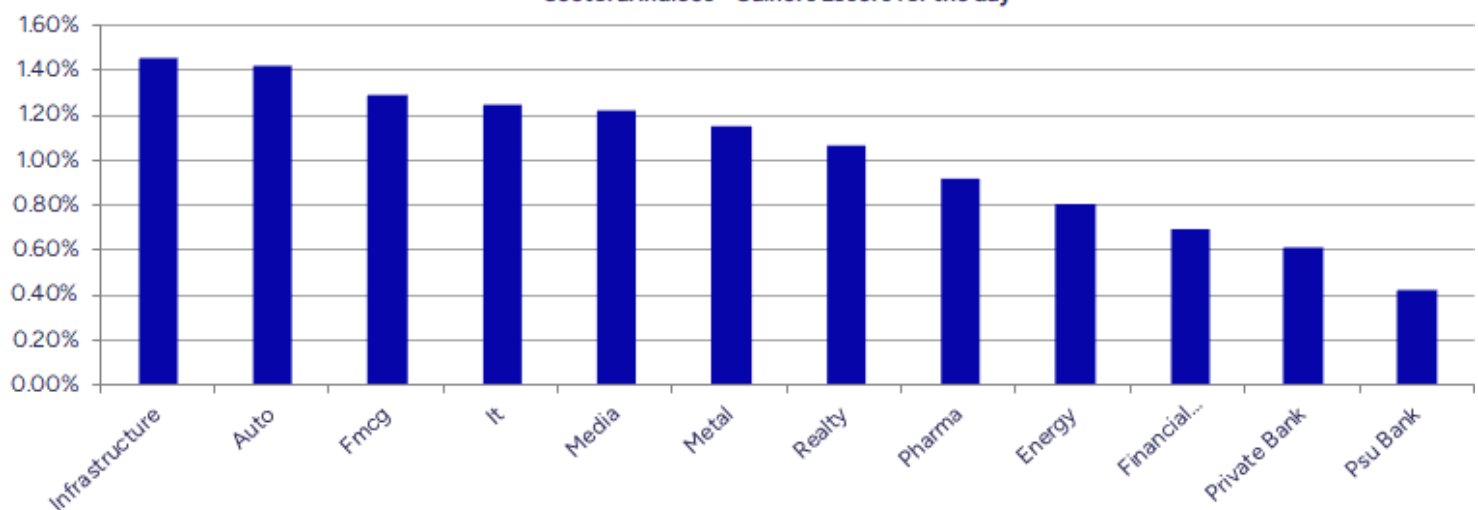
Company Name	LCP	Change %	200 DMA
Garware Technic	845.2	4.95	805.33
NK Industries	60.3	3.80	58.09
KFin Tech	1050.3	3.66	1013.26
AYM Syntex	199.75	3.43	193.13
Panama Petro	395	3.40	382.02
Globus Spirits	965.5	3.24	935.22
NAVA	466.3	2.97	452.85
Gallantt Ispat	346.75	2.46	338.41
Crop Life Sci.	50.25	2.40	49.07
Bharat Elec	297.05	2.31	290.35
Krsnaa	808.15	2.19	790.85
Sagardeep Alloy	29.63	2.00	29.05
Robust Hotels	213.52	1.91	209.52
Indo Tech Trans	2318.4	1.71	2279.31
HF	564.9	1.36	557.31
Procter&Gamble	5315.75	1.34	5245.59
Transport Corp	1055.35	1.23	1042.54
SUMITOMO	524.4	117.00%	518.31

* Stocks crossing above its Simple Moving Average (200DMA)

Breakdown - Cross below 200 DMA

Company Name	LCP	Change %	200 DMA
Jubilant Food	627.6	-1.43	636.69
Thomas Scott	296.95	-1.26	300.74
Medico Remedies	50.12	-1.03	50.64
Sudarshan Chem	984.1	-0.80	992.02
Somi Conveyor	173.58	-0.74	174.87
Unihealth Hospi	140.7	-0.48	141.38
Reliance Power	36.45	-0.46	36.62

* Stocks crossing below its Simple Moving Average (200DMA)

Sectoral Indices - Gainers Losers for the day


Stocks witnessing a volume surge as compared to their 5 day average volur

Watch out for the stocks that have seen a huge spurt in its share price over the last three days

Volume Shockers - NSE					
Company name	LCP	% Chg	Volume	Avg Vol *	% Chg
KEI Industries	2841.1	-13.47	8379543	145420	5662
AstraZeneca	8383.6	6.1	344034	7428	4532
RHI Magnesita	461.6	10.93	7682079	192099	3899
Vibhor Steel	186.99	20	572083	14451	3859
Jai Balaji Ind	144.1	0.92	1859372	54390	3319
Maks Energy	28.5	0	165000	5700	2795
Shipping Corp	176.49	11.92	58457649	2061581	2736
Diamond Power	95.4	3.56	175261	6800	2477
Sotac Pharma	122.75	1.15	190800	7440	2465
SML Isuzu	1431	15.21	265295	12295	2058
Rajesh Exports	187.58	18.24	14953092	727771	1955
Jindal Drilling	935.3	2.55	712553	34855	1944
Garware Technic	845.2	6.03	274151	14113	1843
Kamat Hotels	343.5	6.31	899779	48751	1746
Stardeck Financ	304.15	4.72	36993	2049	1706
Polycab	5083.4	-6.53	4100439	236448	1634
BEW Engineering	149.5	-1.29	19000	1125	1589
Paras Defence	994.7	4.28	1181723	74764	1481
Jindal Worldwid	58.42	-0.05	2165223	138074	1468
Atal	13.47	1.2	1577631	100889	1464

* the Average Volume of last 5 days

Price Shockers - NSE				
Company name	LCP	3 days *	% Chg	Volume
Vibhor Steel	186.99	125.55	48.94	572083
Sindhu Trade	19.09	13.33	43.21	6145130
Asian Energy	284.46	216.94	31.12	491856
Uttam Sugar	251.33	192.42	30.62	372802
SML Isuzu	1431	1103.8	29.64	265295
Garden Reach Sh	1724.05	1336.55	28.99	11602648
Silgo Retail	45.22	35.12	28.76	380716
Dolat Algotech	87.26	68.61	27.18	1233428
Inspire Films	24.6	19.5	26.15	74000
Shera Energy	163.55	129.85	25.95	58000
TVS Electronics	346.75	277.35	25.02	171062
Rajesh Exports	187.58	151.73	23.63	14953092
Summit Sec	1935.35	1568.25	23.41	74349
Sun Pharma Adv	144.49	117.25	23.23	19942052
Sanginita Chemi	11.73	9.57	22.57	231699
Manugraph Ind	17.82	14.54	22.56	175801
Talbros Auto	258.16	212.44	21.52	259429
Shipping Corp	176.49	145.48	21.32	58457649
Premier Explo	378.1	311.75	21.28	679839
Indraprastha	391	323.75	20.77	463680

* the % price rise of the last 3 days

Nifty 50 stocks - Summary Details											
Symbol	LTP	Chng	% Chng	Volume (lacs)	Turnover (crs.)	52w High	Diff with 52w H	52w Low	Diff with 52w L	365 days % chng	30 days % chng
NIFTY 50	23190.65	283.05	1.24%	3137.27	27573.57	26277.35	11.75%	21281.45	8.97%	-0.23%	5.00%
ADANIENT	2338.05	19.40	0.84%	25.87	602.79	3743.90	37.55%	2025.00	15.46%	4.27%	-24.05%
ADANIPTS	1175.00	1.50	0.13%	19.19	225.24	1621.40	27.53%	995.65	18.01%	8.37%	-5.45%
APOLLOHOSP	6473.30	45.75	0.71%	4.57	294.21	7545.35	14.21%	5693.20	13.70%	2.02%	5.14%
ASIANPAINT	2282.80	2.10	0.09%	11.67	267.12	3394.90	32.76%	2124.75	7.44%	1.33%	-18.98%
AXISBANK	1052.00	-0.05	#VALUE!	37.43	394.59	1339.65	21.47%	933.50	12.69%	5.95%	0.12%
BAJAJ-AUTO	7920.00	198.15	2.57%	6.06	478.15	12774.00	38.00%	7301.00	8.48%	-9.55%	-10.63%
BAJAJFINSV	1852.00	9.75	0.53%	23.07	424.37	2029.90	8.76%	1419.05	30.51%	-2.78%	16.49%
BAJFINANCE	8680.00	-51.60	-0.59%	7.92	685.38	8879.00	2.24%	6375.70	36.14%	3.62%	32.37%
BEL	296.70	6.70	2.31%	278.90	822.83	340.50	12.86%	182.50	62.58%	16.70%	56.42%
BHARTIARTL	1704.00	66.85	4.08%	120.74	2036.12	1779.00	4.22%	1183.10	44.03%	-2.29%	33.28%
BPCL	271.80	6.54	2.47%	107.90	291.36	376.00	27.71%	234.01	16.15%	5.14%	-52.44%
BRITANNIA	4828.00	120.90	2.57%	2.65	127.38	6469.90	25.38%	4506.00	7.15%	-5.17%	-2.28%
CIPLA	1508.25	9.10	0.61%	9.84	148.65	1702.05	11.39%	1317.25	14.50%	1.66%	4.42%
COALINDIA	398.00	2.15	0.54%	70.25	278.07	543.55	26.78%	349.25	13.96%	9.93%	-5.54%
DRREDDY	1186.00	13.90	1.19%	15.22	179.61	1421.49	16.57%	1092.45	8.56%	-2.24%	-80.89%
EICHERMOT	5234.00	133.10	2.61%	4.92	256.50	5575.50	6.13%	3672.00	42.54%	7.50%	37.24%
GRASIM	2461.85	3.65	0.15%	3.17	78.33	2877.75	14.45%	2131.00	15.53%	-0.23%	13.08%
HCLTECH	1555.00	10.55	0.68%	46.09	723.00	2012.20	22.72%	1235.00	25.91%	-9.68%	-3.42%
HDFCBANK	1766.60	22.50	1.29%	89.17	1569.93	1880.00	6.03%	1421.25	24.30%	1.56%	20.34%
HDFCLIFE	672.10	7.55	1.14%	44.26	297.34	761.20	11.71%	511.40	31.42%	6.63%	5.07%
HEROMOTOCO	3600.00	63.00	1.78%	7.72	277.75	6246.25	42.37%	3461.60	4.00%	-8.76%	-22.12%
HINDALCO	706.00	7.45	1.07%	46.70	329.09	772.65	8.63%	516.35	36.73%	14.36%	30.90%
HINDUNILVR	2239.45	39.40	1.79%	14.27	318.37	3035.00	26.21%	2136.00	4.84%	-5.55%	-2.95%
ICICIBANK	1318.55	5.45	0.42%	108.87	1436.05	1362.35	3.22%	1048.10	25.80%	4.95%	21.14%
INDUSINDBK	685.00	-7.70	-1.11%	89.18	614.41	1576.35	56.55%	606.00	13.04%	-33.92%	-51.70%
INFY	1609.05	22.50	1.42%	71.87	1161.59	2006.45	19.81%	1358.35	18.46%	-13.88%	1.61%
ITC	403.60	0.55	0.14%	169.94	685.70	528.50	23.63%	391.20	3.17%	-1.36%	-1.59%
JSWSTEEL	1049.10	15.75	1.52%	23.02	240.64	1063.00	1.31%	789.30	32.92%	6.14%	29.00%
KOTAKBANK	2032.10	10.55	0.52%	26.83	545.62	2051.00	0.92%	1543.85	31.63%	3.92%	15.54%
LT	3352.50	32.95	0.99%	24.35	810.16	3963.50	15.42%	3141.00	6.73%	3.03%	-5.20%
M&M	2838.00	48.90	1.75%	23.54	665.58	3270.95	13.24%	1820.55	55.89%	-1.51%	51.26%
MARUTI	11762.00	146.45	1.26%	3.79	443.88	13680.00	14.02%	10725.00	9.67%	-8.99%	0.16%
NESTLEIND	2224.35	40.35	1.85%	4.77	105.45	2778.00	19.93%	2110.00	5.42%	-1.47%	-12.50%
NTPC	341.65	0.35	0.10%	150.02	512.68	448.45	23.82%	292.80	16.68%	12.88%	8.88%
ONGC	235.80	3.23	1.39%	189.56	445.37	345.00	31.65%	215.48	9.43%	-0.46%	-10.29%
POWERGRID	279.60	2.40	0.87%	137.10	383.46	366.25	23.66%	247.30	13.06%	5.32%	7.03%
RELIANCE	1268.20	21.05	1.69%	159.71	2016.42	1608.80	21.17%	1156.00	9.71%	1.82%	-56.25%
SBILIFE	1500.60	15.70	1.06%	7.99	119.73	1936.00	22.49%	1307.70	14.75%	0.59%	1.61%
SBIN	748.50	3.40	0.46%	69.63	521.05	912.00	17.93%	680.00	10.07%	2.39%	2.94%
SHRIRAMFIN	666.30	-1.65	-0.25%	87.47	588.18	730.45	8.78%	438.60	51.92%	21.37%	-70.79%
SUNPHARMA	1754.00	21.65	1.25%	16.02	279.95	1960.35	10.53%	1377.20	27.36%	1.06%	11.88%
TATACONSUM	966.00	16.15	1.70%	24.03	230.44	1250.10	22.73%	882.90	9.41%	-7.17%	-17.13%
TATAMOTORS	689.50	7.25	1.06%	97.12	667.01	1179.00	41.52%	606.30	13.72%	-0.63%	-28.77%
TATASTEEL	159.03	0.43	0.27%	398.89	632.77	184.60	13.85%	122.62	29.69%	18.10%	6.62%
TCS	3556.50	59.40	1.70%	28.45	1012.78	4592.25	22.55%	3457.00	2.88%	-10.43%	-12.07%
TECHM	1410.85	14.70	1.05%	28.63	404.90	1807.70	21.95%	1162.95	21.32%	-16.14%	11.49%
TITAN	3183.05	106.75	3.47%	15.43	489.07	3867.00	17.69%	2985.05	6.63%	-4.85%	-14.15%
TRENT	5215.00	-15.85	-0.30%	7.59	396.20	8345.00	37.51%	3843.00	35.70%	2.64%	32.24%
ULTRACEMCO	10933.00	-0.25	#VALUE!	5.49	598.30	12145.35	9.98%	9250.00	18.19%	-4.85%	15.66%
WIPRO	267.70	2.00	0.75%	170.39	459.99	324.60	17.53%	208.50	28.39%	-12.99%	-46.31%

Disclaimer / Disclosures

ANALYST CERTIFICATION

I, Mrs. Vaishali Parekh B.com, Research Analyst, author and the name subscribed to this report, hereby certify that all of the views expressed in this research report accurately reflect our views about the subject issuer(s) or securities. We also certify that no part of our compensation was, is, or will be directly or indirectly related to the specific recommendation(s) or view(s) in this report.

Terms & conditions and other disclosures:

Prabhudas Lilladher Pvt. Ltd, Mumbai, India (hereinafter referred to as "PL") is engaged in the business of Stock Broking, Portfolio Manager, Depository Participant and distribution for third party financial products. PL is a subsidiary of Prabhudas Lilladher Advisory Services Pvt Ltd. which has its various subsidiaries engaged in business of commodity broking, investment banking, financial services (margin funding) and distribution of third party financial/other products, details in respect of which are available at www.plindia.com

This document has been prepared by the Research Division of PL and is meant for use by the recipient only as information and is not for circulation. This document is not to be reported or copied or made available to others without prior permission of PL. It should not be considered or taken as an offer to sell or a solicitation to buy or sell any security.

The information contained in this report has been obtained from sources that are considered to be reliable. However, PL has not independently verified the accuracy or completeness of the same. Neither PL nor any of its affiliates, its directors or its employees accepts any responsibility of whatsoever nature for the information, statements and opinion given, made available or expressed herein or for any omission therein.

Recipients of this report should be aware that past performance is not necessarily a guide to future performance and value of investments can go down as well. The suitability or otherwise of any investments will depend upon the recipient's particular circumstances and, in case of doubt, advice should be sought from an independent expert/advisor.

Either PL or its affiliates or its directors or its employees or its representatives or its clients or their relatives may have position(s), make market, act as principal or engage in transactions of securities of companies referred to in this report and they may have used the research material prior to publication.

PL may from time to time solicit or perform investment banking or other services for any company mentioned in this document.

PL is registered as Research Analyst under Securities and Exchange Board of India (Research Analysts) Regulations, 2014 PL submits that no material disciplinary action has been taken on us by any Regulatory Authority impacting Equity Research Analysis activities.

PL or its research analysts or its associates or his relatives do not have any financial interest in the subject company.

PL or its research analysts or its associates or his relatives do not have actual/beneficial ownership of one per cent or more securities of the subject company at the end of the month immediately preceding the date of publication of the research report.

PL or its research analysts or its associates or his relatives do not have any material conflict of interest at the time of publication of the research report.

PL or its associates might have received compensation from the subject company in the past twelve months.

PL or its associates might have managed or co-managed public offering of securities for the subject company in the past twelve months or mandated by the subject company for any other assignment in the past twelve months.

PL or its associates might have received any compensation for investment banking or merchant banking or brokerage services from the subject company in the past twelve months.

PL or its associates might have received any compensation for products or services other than investment banking or merchant banking or brokerage services from the subject company in the past twelve months PL or its associates might have received any compensation or other benefits from the subject company or third party in connection with the research report.

PL encourages independence in research report preparation and strives to minimize conflict in preparation of research report. PL or its analysts did not receive any compensation or other benefits from the subject Company or third party in connection with the preparation of the research report. PL or its Research Analysts do not have any material conflict of interest at the time of publication of this report.

It is confirmed that Mrs.Vaishali Parekh B.com, Research Analyst of this report has not received any compensation from the companies mentioned in the report in the preceding twelve months compensation of our Research Analysts is not based on any specific merchant banking, investment banking or brokerage service transactions.

The Research analysts for this report certifies that all of the views expressed in this report accurately reflect his or her personal views about the subject company or companies and its or their securities, and no part of his or her compensation was, is or will be, directly or indirectly related to specific recommendations or views expressed in this report.

The research analysts for this report has not served as an officer, director or employee of the subject company PL or its research analysts have not engaged in market making activity for the subject company

Our sales people, traders, and other professionals or affiliates may provide oral or written market commentary or trading strategies to our clients that reflect opinions that are contrary to the opinions expressed herein, and our proprietary trading and investing businesses may make investment decisions that are inconsistent with the recommendations expressed herein. In reviewing these materials, you should be aware that any or all of the foregoing, among other things, may give rise to real or potential conflicts of interest.

PL and its associates, their directors and employees may (a) from time to time, have a long or short position in, and buy or sell the securities of the subject company or (b) be engaged in any other transaction involving such securities and earn brokerage or other compensation or act as a market maker in the financial instruments of the subject company or act as an advisor or lender/borrower to the subject company or may have any other potential conflict of interests with respect to any recommendation and other related information and opinions.