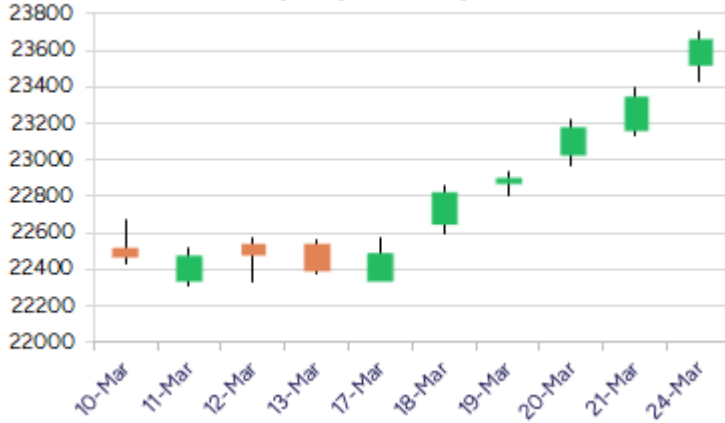


\* Sensex 77984.38 + 1078.87

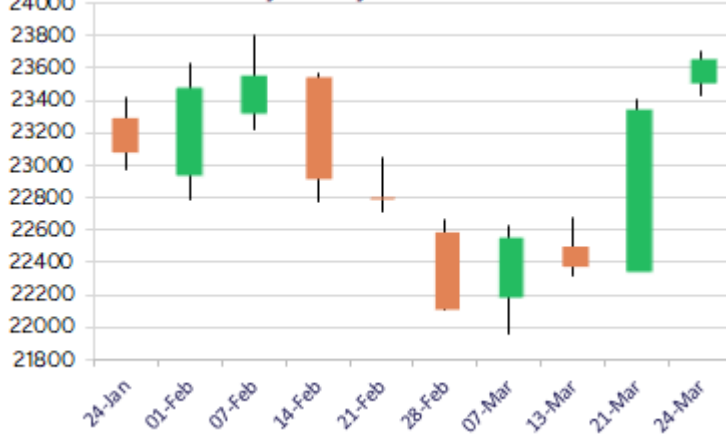
\* Nifty 23658.35 + 307.95

\* Bank Nifty 51704.95 + 1111.40

Nifty daily last 10 days



Nifty Weekly last 10 weeks



\*Blue candle → Close rate > Open rate \* Red candle → Close rate < Open rate

## Market Preview

### Nifty conquers 23500 zone decisively

Nifty extended the gains with overall sentiment getting stronger with the broader markets witnessing active participation to support the indices. BankNifty has indicated a strong trend with major frontline banking stocks gaining strength anticipating for further gains. The market breadth was strong with the advance decline indicating a ratio of 5:2 at close.

## Market Forecast

### Nifty daily range 23500-23900

Nifty, continuing with the robust move has indicated a V-shaped recovery with the bulls gaining strength over the bears almost reaching the previous peak of 23800 zone and with further targets of 24200 and 24700 levels expected, the bias and sentiment has turned overall positive as of now. The important 50EMA zone of 23000 level shall be positioned as the major support from here which needs to be sustained.

BankNifty, with series of strong bullish candle formation on the daily chart has decisively moved past the important 200 period MA at 51000 level to strengthen the trend and with the sentiment turned positive, one can expect for further rise in the coming days. As mentioned earlier, further targets of 52400 and 53800 levels is open with 50500 zone maintained as the near-term support.

The support for the day is seen at 23500 levels while the resistance is seen at 23900 levels. BankNifty would have the daily range of 51200-52400 levels.

Indices	Period	Closing	% Chng	Trend	Reversal	2 Sup	1 Sup	Pivot	1 Res	2 Res
Nifty	Daily	23658.35	1.32%	13	23143.15	23325	23492	23600	23767	23875
	Weekly	23350.40	4.26%	1	22351.75	21986	22668	23035	23718	24085
	Monthly	23508.40	-0.58%	-5	26264.60	22068	22788	23507	24228	24947
Bank Nifty	Daily	51704.95	2.20%	6	50295.85	50429	51067	51434	52072	52439
	Weekly	50593.55	5.27%	1	48540.25	47345	48969	49821	51445	52297
	Monthly	49587.20	-2.50%	-5	52793.25	45873	47730	49701	51559	53530
Sensex	Daily	77984.38	1.40%	13	76164.70	76829	77407	77757	78335	78685
	Weekly	76905.51	4.17%	1	73919.90	72669	74787	75915	78033	79160
	Monthly	77500.57	-0.82%	-5	85764.50	72808	75154	77614	79960	82419

## Daily Trend turned Up

Scrip Name	LCP	Curr Trnd	Reversal
BERGEPAIN	511.6	-1	500.7
COLPAL	2426.3	-1	2401.45
ITC	410.9	-3	406.55
JINDALSTEL	922.75	-1	918.95
METROPOLIS	1613.65	-2	1603.5
TATASTEEL	158.42	-1	157.65
UJJIVAN	35.99	-1	35.7

\* Trends turned Up after a significant period

## Daily Trend turned Down

Scrip Name	LCP	Curr Trnd	Reversal
BATAIN	1236.45	4	1237.55
INDIGO	4970.35	5	4995.75
LALPATHLAB	2490.45	1	2529.35
SRF	2991.35	1	3017.8
TRENT	5054.7	8	5156.6

\* Trends turned Down after a significant period

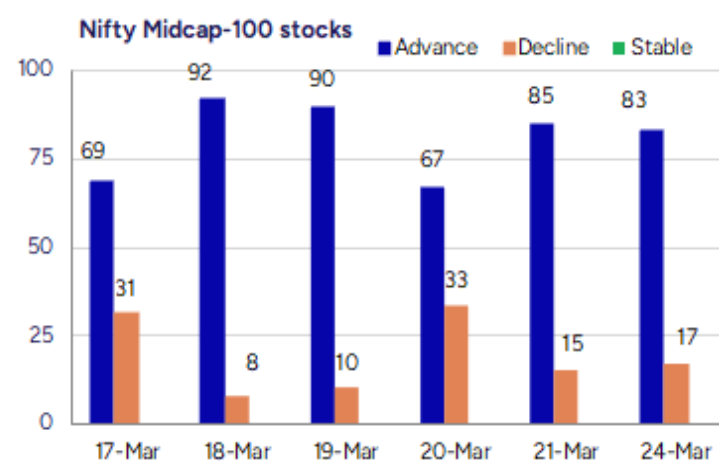
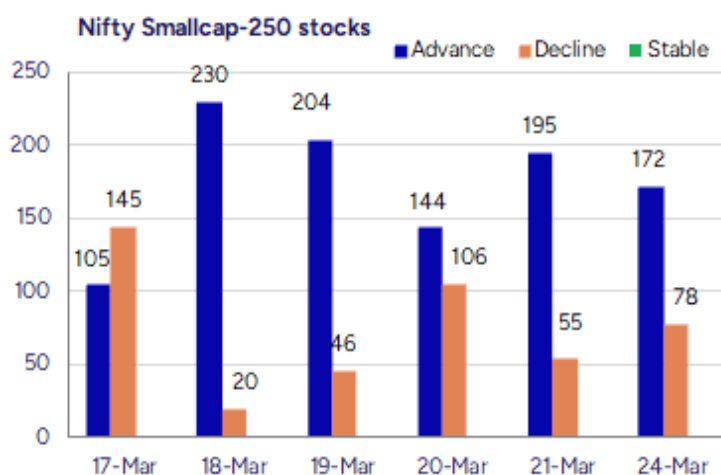
## Gainers - Losers ( Nifty 500 Stocks )

## Gainers

Scrip Name	LCP	% Change	Volume
Bharat Seats	84.43	4	140657
Ishan Dyes	42.08	320.8	41395
Pearl Polymers	29.94	20	137232
Sangam India	414.3	20	308380
Sharda Motor	1799.6	20	211980
AMD Industries	55.88	19.99	117357
AION-TECH	69.08	19.99	183080

## Losers

Scrip Name	LCP	% Change	Volume
Varanium	8.45	-47.84	102000
Varanium	8.45	-47.84	102000
CMM Infracore	1.75	-27.08	24000
Rockingdeals	234	-9.72	128750
IKIO Lighting	265.63	-9.32	481356
Medico Remedies	46.34	-7.87	3209337
Medico Remedies	46.34	-7.87	3209337



### Nifty Daily chart with RSI indicator



### BankNifty Daily chart with RSI indicator



**Breakouts - Cross above 200 DMA**

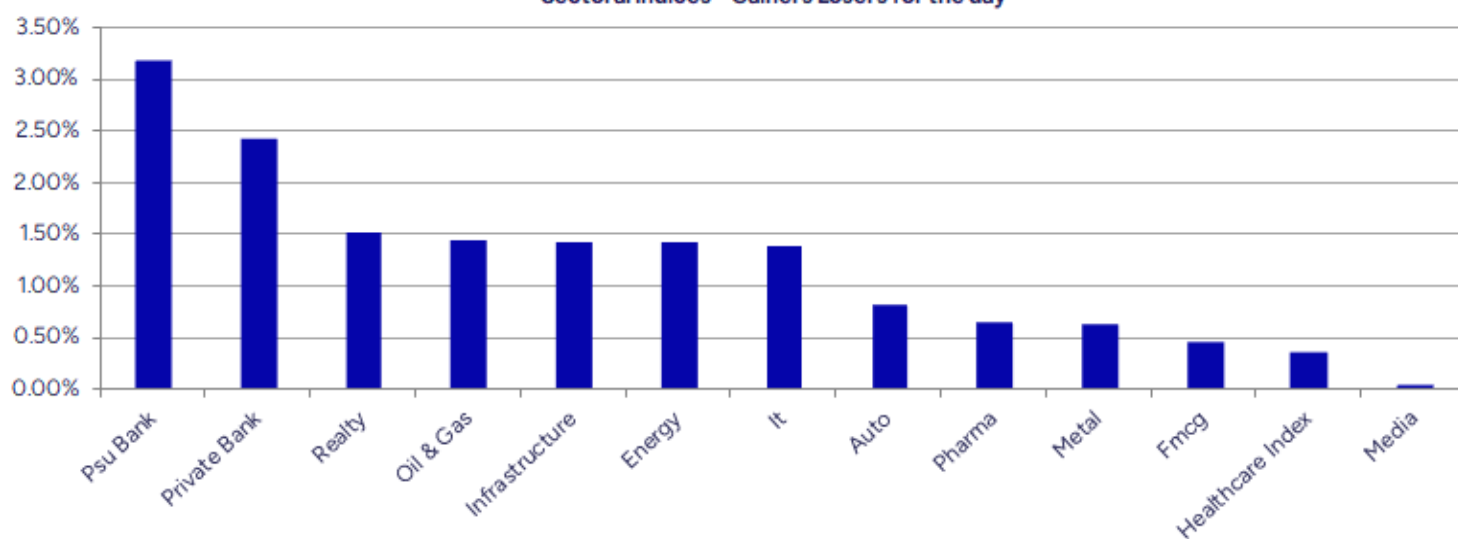
Company Name	LCP	Change %	200 DMA
JBM Auto	662.05	15.01	843.97
Sharda Motor	1799.6	13.51	2092.35
AION-TECH	69.08	13.47	93.38
Lambodhara Text	137.14	11.99	162.11
Global Surfaces	126.56	11.76	179.37
Spaisa Capita	393	10.60	472.92
Coral India Fin	42.1	8.53	50.81
Guj Alkali	605.25	7.90	745.95
Pearl Polymers	29.94	7.81	34.48
Finolex Cables	939.05	7.40	1265.31
Ind Motor Parts	1026.95	7.33	1175.51
SIS	339.15	7.23	386.26
Datamatics Glob	650.95	7.02	612.86
Alkyl Amines	1774.5	6.89	1979.97
Indoco Remedies	251.46	6.75	315.36
MTAR	1441.6	6.67	1685.16
Indian Renew	170.04	5.83	209.89
P E Analytics	249	429.00%	277.39

\* Stocks crossing above its Simple Moving Average (200DMA)

**Breakdown - Cross below 200 DMA**

Company Name	LCP	Change %	200 DMA
Glenmark	1492.65	-1.38	1513.61
Sudarshan Chem	986	-0.85	994.5
Guj Heavy Chem	622.4	-0.83	627.61
Veekayem Fashio	235.5	-0.72	237.21
Medicamen Bio	478.6	-0.60	481.49
Xpro India	1181.35	-0.55	1187.88
Presstonic	109.45	-0.01	109.46

\* Stocks crossing below its Simple Moving Average (200DMA)

**Sectoral Indices - Gainers Losers for the day**


Stocks witnessing a volume surge as compared to their 5 day average volume

Volume Shockers - NSE					
Company name	LCP	% Chg	Volume	Avg Vol *	% Chg
Ushanti Colour	59.4	<b>0.76</b>	218000	2800	7686
JBM Auto	662.05	<b>16.56</b>	13389877	180877	7303
Krishival Foods	230	<b>2.68</b>	77500	1200	6358
Finolex Cables	939.05	<b>11.92</b>	17918193	285747	6171
SML Isuzu	1725.7	<b>4.47</b>	723274	12295	5783
BEW Engineering	148.2	<b>-2.5</b>	57500	1125	5011
Kaya	241.35	<b>9.65</b>	201320	6240	3126
Rajesh Exports	212.43	<b>13.47</b>	20953422	727771	2779
Diamond Power	98.96	<b>5</b>	190858	6800	2707
Diamond Power	98.96	<b>5</b>	190858	6800	2707
Diamond Power	98.96	<b>5</b>	190858	6800	2707
Krishna Institu	642.25	<b>4.58</b>	1639192	59456	2657
Krishna Institu	642.25	<b>4.58</b>	1639192	59456	2657
Jai Balaji Ind	141.54	<b>-2.41</b>	1399190	54390	2473
Jai Balaji Ind	141.54	<b>-2.41</b>	1399190	54390	2473
Total Transport	76.57	<b>2.9</b>	332033	13024	2449
AstraZeneca	8480.45	<b>-0.36</b>	184658	7428	2386
Mahickra Chemic	116	<b>5.45</b>	46500	1950	2285
Interiors & Mor	417.75	<b>7.12</b>	83400	3600	2217
Jupiter Wagons	365.05	<b>4.93</b>	15361119	766784	1903

\* the Average Volume of last 5 days

Watch out for the stocks that have seen a huge spurt in its share price over the last three days

Price Shockers - NSE				
Company name	LCP	3 days *	% Chg	Volume
AION-TECH	69.08	49.04	<b>40.86</b>	183080
SML Isuzu	1725.7	1242.1	<b>38.93</b>	723274
AMD Industries	55.88	40.9	<b>36.63</b>	117357
Rajesh Exports	212.43	158.65	<b>33.9</b>	20953422
Balu Forge Indu	654.45	513.65	<b>27.41</b>	4492306
Interiors Mor	417.75	328.25	<b>27.27</b>	83400
MRPL	143.24	115.95	<b>23.54</b>	18892289
Sangam India	414.3	337.05	<b>22.92</b>	308380
JBM Auto	662.05	540.3	<b>22.53</b>	13389877
Power Mech	2526.5	2079	<b>21.52</b>	660226
GPT Infra	115.5	95.46	<b>20.99</b>	403525
Sharda Motor	1799.6	1488.6	<b>20.89</b>	211980
BLS Internation	422.35	349.55	<b>20.83</b>	8861568
Crown Lifters	198.09	164.65	<b>20.31</b>	44088
Zen Tech	1522.1	1268.25	<b>20.02</b>	1609942
Sun Pharma Adv	156.04	130.34	<b>19.72</b>	9552985
Valor Estate	151.72	127.24	<b>19.24</b>	7935850
Wise Travel	167.35	141	<b>18.69</b>	95500
Arman Financial	1400.15	1182.55	<b>18.4</b>	84757
Lotus Eye Care	68.43	57.97	<b>18.04</b>	217485

\* the % price rise of the last 3 days

## Nifty 50 stocks - Summary Details

Symbol	LTP	Chng	% Chng	Volume (lacs)	Turnover (crs.)	52w High	Diff with 52w H	52w Low	Diff with 52w L	365 days % chng	30 days % chng
NIFTY 50	23658.35	30795	1.32%	3119.00	28871	26277	9.97%	21281	11.17%	2.43%	5.67%
ADANIEN	2370.00	7.20	0.30%	10.10	240	3744	36.70%	2025	17.04%	10.77%	-23.97%
ADANIPTS	1200.50	11.70	0.98%	21.35	257	1621	25.96%	996	20.57%	9.74%	-7.24%
APOLLOHOSP	6630.00	18.45	0.28%	3.90	259	7545	12.13%	5693	16.45%	4.65%	3.70%
ASIANPAINT	2318.50	18.10	0.79%	11.00	255	3395	31.71%	2125	9.12%	1.90%	-19.04%
AXISBANK	1099.00	28.85	2.70%	82.85	908	1340	17.96%	934	17.73%	6.07%	3.57%
BAJAJ-AUTO	8120.00	52.15	0.65%	4.54	369	12774	36.43%	7301	11.22%	-5.15%	-9.81%
BAJAJFINSV	1895.35	48.10	2.60%	18.65	351	2030	6.63%	1419	33.56%	-1.71%	16.36%
BAJFINANCE	9079.70	163.60	1.83%	14.33	1297	9115	0.39%	6376	42.41%	6.19%	31.88%
BEL	302.95	7.21	2.44%	299.35	905	341	11.03%	190	59.45%	15.48%	49.74%
BHARTIARTL	1716.95	-8.85	-0.51%	4121	711	1779	3.49%	1183	45.12%	5.28%	39.62%
BPCL	280.69	1.03	0.37%	113.77	321	376	25.35%	234	19.95%	11.29%	-52.82%
BRITANNIA	4794.05	-19.95	-0.41%	1.74	83	6470	25.90%	4506	6.39%	-0.37%	-1.05%
CIPLA	1524.45	0.60	0.04%	8.26	126	1702	10.43%	1317	15.73%	3.26%	2.88%
COALINDIA	405.65	0.25	0.06%	52.60	214	544	25.37%	349	16.15%	9.58%	-6.15%
DRREDDY	1208.00	7.85	0.65%	16.61	200	1421	15.02%	1092	10.58%	4.20%	-80.65%
EICHERMOT	5426.00	120.05	2.26%	3.17	171	5576	2.68%	3863	40.45%	6.92%	33.03%
GRASIM	2511.00	41.60	1.68%	5.94	150	2878	12.74%	2172	15.63%	1.58%	11.06%
HCLTECH	1602.85	36.15	2.31%	24.88	396	2012	20.34%	1235	29.79%	-7.88%	0.57%
HDFCBANK	1802.80	32.45	1.83%	86.97	1560	1880	4.11%	1421	26.85%	4.60%	22.70%
HDFCLIFE	681.00	1.40	0.21%	14.01	96	761	10.54%	511	33.16%	9.11%	8.94%
HEROMOTOCO	3625.75	-3.25	-0.09%	6.63	240	6246	41.95%	3462	4.74%	-5.80%	-22.52%
HINDALCO	702.35	7.00	1.01%	42.97	301	773	9.10%	534	31.46%	6.40%	26.95%
HINDUNILVR	2265.15	18.95	0.84%	14.54	327	3035	25.37%	2136	6.05%	0.20%	-0.46%
ICICIBANK	1361.20	18.10	1.35%	93.52	1271	1373	0.86%	1048	29.87%	8.93%	23.19%
INDUSINDBK	667.75	-19.15	-2.79%	146.50	987	1576	57.64%	606	10.19%	-34.19%	-54.57%
INFY	1593.95	1.40	0.09%	88.58	1407	2006	20.56%	1358	17.34%	-12.26%	5.55%
ITC	411.00	5.45	1.34%	143.63	588	529	22.23%	391	5.06%	1.16%	-5.38%
JSWSTEEL	1061.55	2.85	0.27%	22.67	241	1072	0.97%	803	32.18%	7.82%	28.36%
KOTAKBANK	2180.00	101.00	4.86%	85.08	1841	2184	0.19%	1544	41.21%	6.45%	17.03%
LT	3483.05	67.10	1.96%	19.56	681	3964	12.12%	3141	10.89%	3.04%	-5.58%
M&M	2777.00	-24.85	-0.89%	53.95	1488	3271	15.10%	1845	50.51%	4.96%	49.13%
MARUTI	11917.00	184.20	1.57%	3.59	427	13680	12.89%	10725	11.11%	-4.79%	-4.90%
NESTLEIND	2263.30	-5.55	-0.24%	4.31	98	2778	18.53%	2110	7.27%	2.43%	-11.83%
NTPC	367.00	15.70	4.47%	245.88	894	448	18.16%	293	25.34%	7.68%	8.18%
ONGC	243.51	1.09	0.45%	105.66	258	345	29.42%	215	13.01%	1.05%	-7.91%
POWERGRID	292.00	8.90	3.14%	199.67	581	366	20.27%	247	18.08%	8.09%	2.67%
RELIANCE	1302.65	26.30	2.06%	202.99	2634	1609	19.03%	1156	12.69%	3.92%	-56.14%
SBILIFE	1573.30	26.90	1.74%	12.29	192	1936	18.73%	1308	20.31%	3.41%	3.02%
SBIN	781.00	27.80	3.69%	120.95	934	912	14.36%	680	14.85%	4.32%	0.87%
SHRIRAMFIN	680.60	3.80	0.56%	49.84	341	730	6.82%	439	55.18%	15.67%	-70.96%
SUNPHARMA	1784.00	-0.50	-0.03%	11.82	211	1960	9.00%	1377	29.54%	8.56%	10.91%
TATACONSUM	974.65	13.45	1.40%	14.76	143	1250	22.03%	883	10.39%	-4.26%	-14.39%
TATAMOTORS	713.90	10.95	1.56%	116.71	829	1179	39.45%	606	17.75%	4.42%	-28.26%
TATASTEEL	158.29	1.01	0.64%	309.06	490	185	14.25%	123	29.09%	11.74%	3.61%
TCS	3633.00	54.90	1.53%	18.35	663	4592	20.89%	3457	5.09%	-5.49%	-8.51%
TECHM	1459.95	50.70	3.60%	30.73	441	1808	19.24%	1163	25.54%	-14.57%	11.61%
TITAN	3076.00	-86.70	-2.74%	14.81	458	3867	20.46%	2985	3.05%	-0.54%	-14.68%
TRENT	5063.00	-87.05	-1.69%	9.08	462	8345	39.33%	3843	31.75%	2.02%	30.43%
ULTRACEMCO	11050.00	73.25	0.67%	2.95	324	12145	9.02%	9250	19.46%	-1.62%	13.38%
WIPRO	269.00	4.70	1.78%	92.70	249	325	17.13%	209	29.02%	-13.73%	-45.74%

## Disclaimer / Disclosures

### ANALYST CERTIFICATION

I, Mrs. Vaishali Parekh B.com, Research Analyst, author and the name subscribed to this report, hereby certify that all of the views expressed in this research report accurately reflect our views about the subject issuer(s) or securities. We also certify that no part of our compensation was, is, or will be directly or indirectly related to the specific recommendation(s) or view(s) in this report.

Terms & conditions and other disclosures:

Prabhudas Lilladher Pvt. Ltd, Mumbai, India (hereinafter referred to as "PL") is engaged in the business of Stock Broking, Portfolio Manager, Depository Participant and distribution for third party financial products. PL is a subsidiary of Prabhudas Lilladher Advisory Services Pvt Ltd. which has its various subsidiaries engaged in business of commodity broking, investment banking, financial services (margin funding) and distribution of third party financial/other products, details in respect of which are available at [www.plindia.com](http://www.plindia.com)

This document has been prepared by the Research Division of PL and is meant for use by the recipient only as information and is not for circulation. This document is not to be reported or copied or made available to others without prior permission of PL. It should not be considered or taken as an offer to sell or a solicitation to buy or sell any security.

The information contained in this report has been obtained from sources that are considered to be reliable. However, PL has not independently verified the accuracy or completeness of the same. Neither PL nor any of its affiliates, its directors or its employees accepts any responsibility of whatsoever nature for the information, statements and opinion given, made available or expressed herein or for any omission therein.

Recipients of this report should be aware that past performance is not necessarily a guide to future performance and value of investments can go down as well. The suitability or otherwise of any investments will depend upon the recipient's particular circumstances and, in case of doubt, advice should be sought from an independent expert/advisor.

Either PL or its affiliates or its directors or its employees or its representatives or its clients or their relatives may have position(s), make market, act as principal or engage in transactions of securities of companies referred to in this report and they may have used the research material prior to publication.

PL may from time to time solicit or perform investment banking or other services for any company mentioned in this document.

PL is registered as Research Analyst under Securities and Exchange Board of India (Research Analysts) Regulations, 2014 PL submits that no material disciplinary action has been taken on us by any Regulatory Authority impacting Equity Research Analysis activities.

PL or its research analysts or its associates or his relatives do not have any financial interest in the subject company.

PL or its research analysts or its associates or his relatives do not have actual/beneficial ownership of one per cent or more securities of the subject company at the end of the month immediately preceding the date of publication of the research report.

PL or its research analysts or its associates or his relatives do not have any material conflict of interest at the time of publication of the research report.

PL or its associates might have received compensation from the subject company in the past twelve months.

PL or its associates might have managed or co-managed public offering of securities for the subject company in the past twelve months or mandated by the subject company for any other assignment in the past twelve months.

PL or its associates might have received any compensation for investment banking or merchant banking or brokerage services from the subject company in the past twelve months.

PL or its associates might have received any compensation for products or services other than investment banking or merchant banking or brokerage services from the subject company in the past twelve months PL or its associates might have received any compensation or other benefits from the subject company or third party in connection with the research report.

PL encourages independence in research report preparation and strives to minimize conflict in preparation of research report. PL or its analysts did not receive any compensation or other benefits from the subject Company or third party in connection with the preparation of the research report. PL or its Research Analysts do not have any material conflict of interest at the time of publication of this report.

It is confirmed that Mrs.Vaishali Parekh B.com, Research Analyst of this report has not received any compensation from the companies mentioned in the report in the preceding twelve months compensation of our Research Analysts is not based on any specific merchant banking, investment banking or brokerage service transactions.

The Research analysts for this report certifies that all of the views expressed in this report accurately reflect his or her personal views about the subject company or companies and its or their securities, and no part of his or her compensation was, is or will be, directly or indirectly related to specific recommendations or views expressed in this report.

The research analysts for this report has not served as an officer, director or employee of the subject company PL or its research analysts have not engaged in market making activity for the subject company

Our sales people, traders, and other professionals or affiliates may provide oral or written market commentary or trading strategies to our clients that reflect opinions that are contrary to the opinions expressed herein, and our proprietary trading and investing businesses may make investment decisions that are inconsistent with the recommendations expressed herein. In reviewing these materials, you should be aware that any or all of the foregoing, among other things, may give rise to real or potential conflicts of interest.

PL and its associates, their directors and employees may (a) from time to time, have a long or short position in, and buy or sell the securities of the subject company or (b) be engaged in any other transaction involving such securities and earn brokerage or other compensation or act as a market maker in the financial instruments of the subject company or act as an advisor or lender/borrower to the subject company or may have any other potential conflict of interests with respect to any recommendation and other related information and opinions.