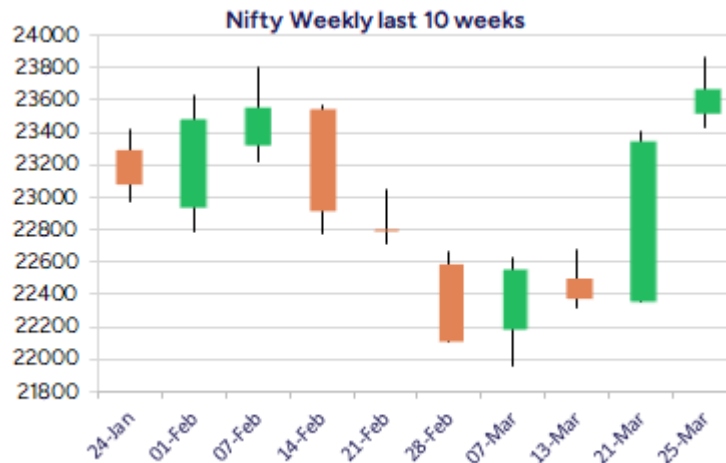
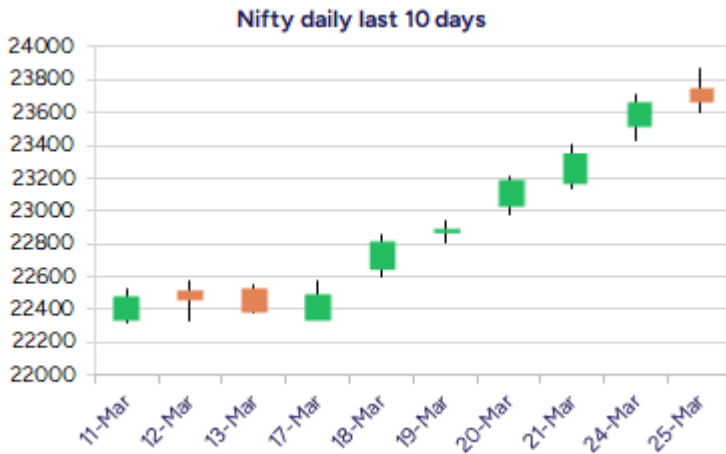


* Sensex 78017.19 + 32.81

* Nifty 23668.65 + 10.30

* Bank Nifty 51607.95 - 97.00



*Blue candle → Close rate > Open rate * Red candle → Close rate < Open rate

Market Preview

Nifty takes a breather near 23850 zone

Nifty witnessed a halt near 23850 zone taking a breather after the strong run up in the last 6 sessions maintaining the bias and sentiment positive. BankNifty scaled 52000 zone with the robust move in the last one week and with some cooling off has closed near the 51600 zone. The market breadth turned slightly negative with the advance decline indicating a ratio of 2:5 at close.

Market Forecast

Nifty daily range 23500-23900

Nifty, after witnessing a significant gain of almost 1500 points in the last 6 sessions, took a breather finding resistance near 23850 zone and with some profit booking seen ended the session on a flat note near 23670 level. The index has overall improved the trend with sentiment getting better and with a short period of consolidation with near-term support positioned near 23500 zone, can anticipate for another round of upward move with targets of 24200 and 24700 levels expected in the coming days.

BankNifty, after the strong move from 48000 zone has scaled 52000 level in the past 6 sessions finding resistance and taking a halt has slipped down with some profit booking witnessed. The overall bias has been maintained strong, with near-term support positioned near the important 200 period MA at 51000 level which needs to be sustained as of now. On the upper side, the targets of 52500 and 53800 levels are still open, with the frontline banking stocks well poised for further gains in the coming days.

The support for the day is seen at 23500 levels while the resistance is seen at 23900 levels. BankNifty would have the daily range of 51200-52200 levels.

Indices	Period	Closing	% Chng	Trend	Reversal	2 Sup	1 Sup	Pivot	1 Res	2 Res
Nifty	Daily	23668.65	0.04%	14	23358.20	23445	23557	23713	23825	23981
	Weekly	23350.40	4.26%	1	22351.75	21986	22668	23035	23718	24085
	Monthly	23508.40	-0.58%	-5	26264.60	22068	22788	23507	24228	24947
Bank Nifty	Daily	51607.95	-0.19%	7	50853.15	51066	51337	51701	51971	52335
	Weekly	50593.55	5.27%	1	48540.25	47345	48969	49821	51445	52297
	Monthly	49587.20	-2.50%	-5	52793.25	45873	47730	49701	51559	53530
Sensex	Daily	78017.19	0.04%	14	76923.75	77172	77595	78168	78591	79164
	Weekly	76905.51	4.17%	1	73919.90	72669	74787	75915	78033	79160
	Monthly	77500.57	-0.82%	-5	85764.50	72808	75154	77614	79960	82419

Daily Trend turned Down

Scrip Name	LCP	Curr Trnd	Reversal
ADANIENT	2320.35	6	2332.6
ADANIPOWER	507.7	18	520.75
BALKRISIND	2565.4	6	2570
DIXON	13624.5	5	13664
GLAXO	2834.3	5	2874.95
GLENMARK	1480.75	15	1484.85
GODREJIND	1180.95	4	1214.55
HINDZINC	444.45	13	450
INDUSINDBK	637.05	4	661.2
JSWENERGY	555.35	22	565.85
JUBLPHARMA	871.35	5	884.45
CUMMINS	2962.5	5	2981.7

* Trends turned Down after a significant period

Daily Trend turned Down

Scrip Name	LCP	Curr Trnd	Reversal
KSCL	1269.35	6	1298.2
LUPINLTD	2068.75	6	2073.15
M&M	2736	6	2765.55
MAHSEAMLES	696.75	13	707.35
MCDOWELLCOM	1365.55	13	1373.6
MCX	5156.15	9	5224
MUTHOOTFIN	2345.45	12	2356.7
SIEMENS	5119.1	5	5130.75
TATACOMM	1578.25	13	1580.4
TITAN	3053.7	5	3063.75
VEDL	461.8	13	466.65
WOCKPHARMA	1426.6	5	1433.3

* Trends turned Down after a significant period

Gainers - Losers (Nifty 500 Stocks)

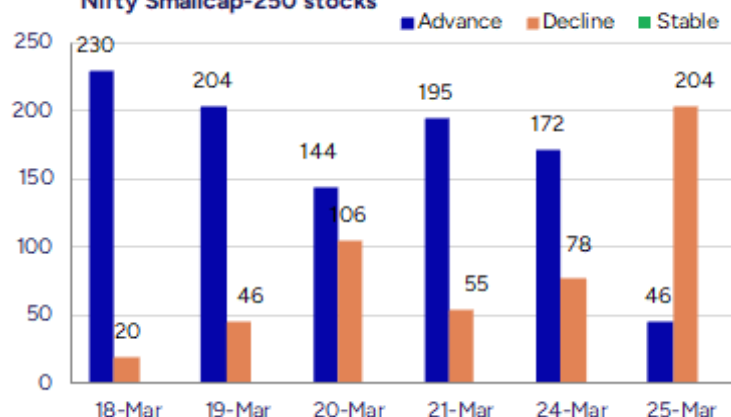
Gainers

Scrip Name	LCP	% Change	Volume
HEG	483	11.87	30111945
Blue Dart	6516.25	8.5	563136
Graphite India	495.9	7.78	27305527
PTC Industries	14512.95	4.62	26801
Sanofi India	6097.5	4.52	94704
Fine Organics	4134.9	4.09	205133
KPIL	1016.9	3.72	1342686

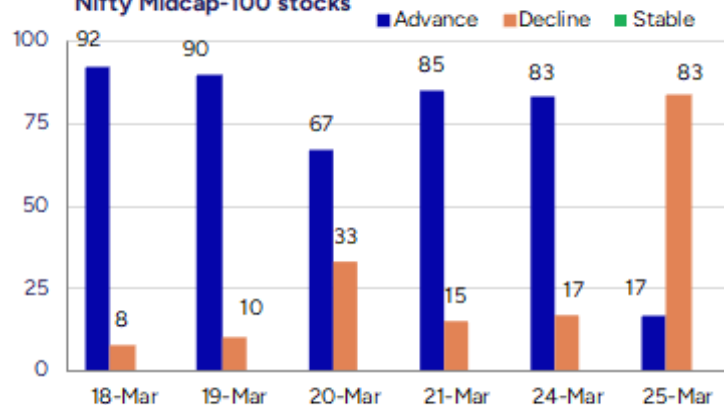
Losers

Scrip Name	LCP	% Change	Volume
Dixon Technolog	13624.5	-6.73	835339
Swan Energy	444.25	-6.05	4934650
Zomato	209.81	-5.83	84184995
Himadri Special	432.85	-5.5	1340736
Home First	1027.8	-5.4	305471
Emcure Pharmace	1006.5	-5.24	180800
Sammaan Capital	112.89	-5.13	9893144

Nifty Smallcap-250 stocks



Nifty Midcap-100 stocks



Nifty Daily chart with RSI indicator



BankNifty Daily chart with RSI indicator



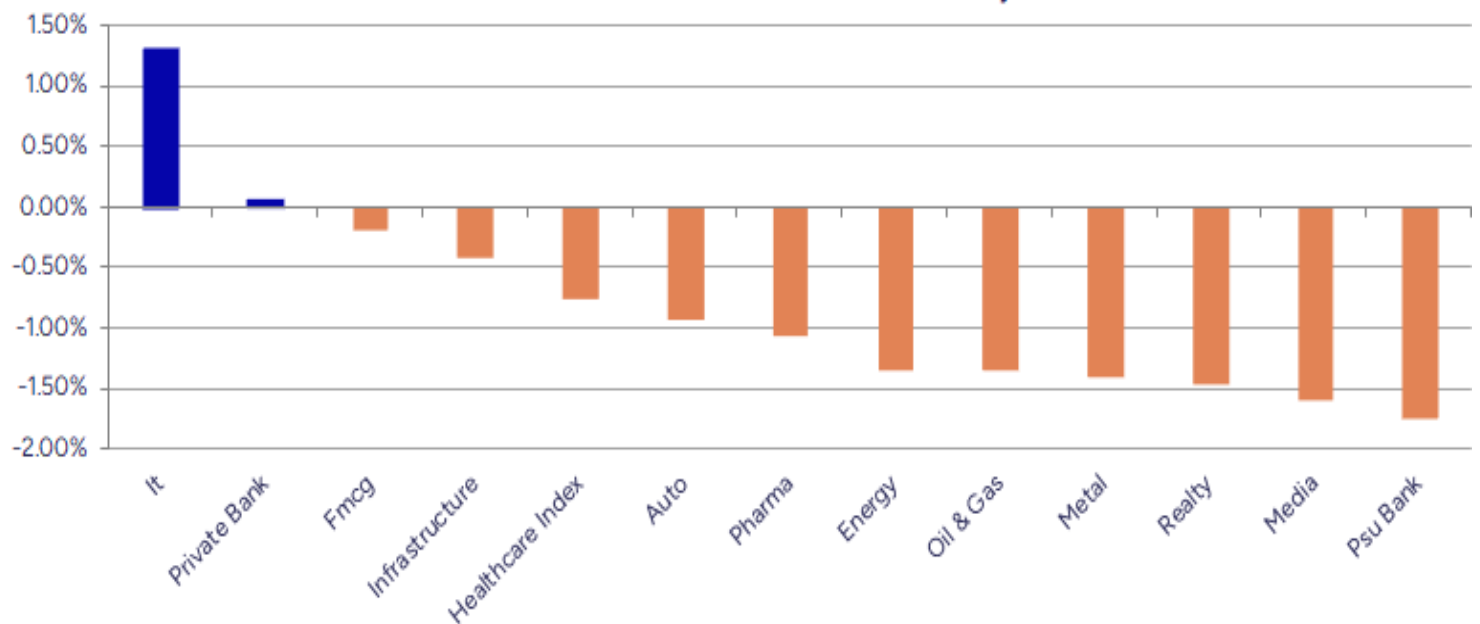
Breakouts - Cross above 200 DMA			
Company Name	LCP	Change %	200 DMA
HEG	483	10.63	436.6
Sangani HOSP	59	7.47	54.9
Crop Life Sci.	51.15	3.94	49.21
UltraTechCement	11421.2	1.14	11291.91
IKIO Lighting	267.19	0.58	265.64
Syrma SGS	487.9	0.44	485.75
Saregama India	520.65	0.18	519.69

Breakdown - Cross below 200 DMA			
Company Name	LCP	Change %	200 DMA
Gujarat Apollo	298.3	-5.67	316.23
SML Isuzu	1608.85	-5.64	1705.02
Reflex Ind	376.8	-4.69	395.33
MCX India	5156.15	-4.16	5380.02
Dixon Technolog	13624.5	-4.05	14199.48
Welspun Invest	838.45	-3.65	870.17
PB Fintech	1609.85	-3.55	1669.11
Home First	1027.8	-3.47	1064.78
GMRP&UI	108.99	-3.02	112.38
Piramal Enter	990.9	-2.83	1019.73
Capacite Infra	352.7	-2.70	362.5
Hind Rectifiers	977.05	-2.54	1002.56
Genesys Int	754.1	-2.33	772.11
Quess Corp	664.15	-2.18	678.98
Prudent Advisor	2361.8	-2.11	2412.73
DCM Shriram	1058.1	-1.74	1076.79
Unihealth Hospi	139.1	-1.70	141.51
Stove	755.75	-1.69	768.71

* Stocks crossing above its Simple Moving Average (200DMA)

* Stocks crossing below its Simple Moving Average (200DMA)

Sectoral Indices - Gainers Losers for the day



Stocks witnessing a volume surge as compared to their 5 day average volur

Watch out for the stocks that have seen a huge spurt in its share price over the last three days

Volume Shockers - NSE					
Company name	LCP	% Chg	Volume	Avg Vol *	% Chg
Supreme Ind	3390.65	-0.28	282790	1945	14441
Supreme Petro	601.2	1.25	203841	4419	4513
Supreme Petro	601.2	1.25	203841	4419	4513
Emkay Global	192.2	-0.1	44269	1061	4074
BGR Energy	84.35	4.63	248827	5989	4055
Panchmahal Stee	146.85	-11.48	89428	2165	4030
HCP Plastene	123.4	-1.67	63125	1582	3890
Martin Burn Ltd	79.74	4.99	112781	3619	3017
Azad India Mobi	96.78	-0.08	34112	1165	2827
Sujala Trading	74.43	4.82	74608	2840	2527
Jhaveri Credits	192.55	9.06	40917	1558	2526
Somi Conveyor	184.65	19.24	34530	1424	2325
Data Patterns	1631.6	14.82	462664	20624	2143
Cambridge Tech	53.77	-4.98	147595	6640	2123
Puravankara	255.2	2.35	101365	4979	1936
HEG	393.95	2.4	79177	4095	1833
HEG	393.95	2.4	79177	4095	1833
FEDDERS HOLDING	52.22	2.03	139950	7945	1661
FEDDERS HOLDING	52.22	2.03	139950	7945	1661
Barbeque Nat	309.2	4.04	81356	4963	1539

* the Average Volume of last 5 days

Price Shockers - NSE				
Company name	LCP	3 days *	% Chg	Volume
Keynote Finance	297.1	237.5	25.09	10109
Vinyl Chemicals	303.05	242.5	24.97	25486
Magellanic	60.34	48.59	24.18	532677
Jagan Litech	82.89	67.38	23.02	32565
Sangam India	419.8	344.45	21.88	10690
SG FINSERVE	411.55	339.3	21.29	1553747
Ador Multi	55.42	45.81	20.98	47517
HCP Plastene	139.3	115.15	20.97	85699
Global Offshore	99.73	82.62	20.71	50188
Power Mech	2610.75	2168.85	20.37	14186
Uravi Defence	369.65	308.35	19.88	7252
Sika Interplant	623.8	520.8	19.78	195772
RDB Rasayans	129.5	111.8	15.83	67761
Sharda Motor	1730.55	1497.9	15.53	24369
Kaya	249.9	219.55	13.82	11045
Elnet Tech	393.2	347.2	13.25	10026
Batliboi	109.14	96.42	13.19	67065
Salzer Electro	1102.55	975	13.08	30020
Lambodhara Text	131.3	116.2	12.99	50559
Solitaire Mach	156.2	138.35	12.9	18860

* the % price rise of the last 3 days

Nifty 50 stocks - Summary Details											
Symbol	LTP	Chng	% Chng	Volume (lacs)	Turnover (crs.)	52w High	Diff with 52w H	52w Low	Diff with 52w L	365 days % chng	30 days % chng
NIFTY 50	23668.65	10.30	0.04%	3382.17	35415	26277	9.93%	21281	11.22%	3.78%	7.07%
ADANIANT	2319.50	-49.20	-2.08%	7.63	179	3744	38.05%	2025	14.54%	11.04%	-23.78%
ADANIAPORTS	1179.70	-21.10	-1.76%	20.90	248	1621	27.24%	996	18.49%	10.85%	-6.30%
APOLLOHOSP	6650.00	34.20	0.52%	2.24	148	7545	11.87%	5693	16.81%	4.72%	3.76%
ASIANPAINT	2324.00	1.50	0.06%	18.28	425	3395	31.54%	2125	9.38%	2.87%	-18.27%
AXISBANK	1109.00	11.15	1.02%	117.21	1301	1340	17.22%	934	18.80%	8.81%	6.25%
BAJAJ-AUTO	7990.00	-135.55	-1.67%	8.24	661	12774	37.45%	7301	9.44%	-4.47%	-9.16%
BAJAJFINSV	1935.45	41.30	2.18%	35.13	681	2030	4.65%	1419	36.39%	0.79%	19.31%
BAJFINANCE	9040.00	-50.05	-0.55%	17.48	1591	9260	2.38%	6376	41.79%	8.26%	34.45%
BEL	299.30	-2.80	-0.93%	193.65	583	341	12.10%	196	52.74%	17.96%	52.96%
BHARTIARTL	1727.50	8.70	0.51%	48.57	838	1779	2.89%	1183	46.01%	4.85%	39.05%
BPCL	278.60	-1.84	-0.66%	121.44	340	376	25.90%	234	19.05%	11.60%	-52.69%
BRITANNIA	4844.90	48.05	1.00%	4.22	204	6470	25.12%	4506	7.52%	-0.73%	-1.40%
CIPLA	1506.00	-18.05	-1.18%	10.93	166	1702	11.52%	1317	14.33%	3.27%	2.89%
COALINDIA	397.90	-8.10	-2.00%	56.36	226	544	26.80%	349	13.93%	9.74%	-6.01%
DRREDDY	1173.50	-36.80	-3.04%	28.61	337	1421	17.45%	1092	7.42%	5.08%	-80.49%
EICHERMOT	5419.00	-5.20	-0.10%	3.24	176	5576	2.81%	3886	39.45%	9.30%	36.00%
GRASIM	2566.50	53.30	2.12%	9.93	254	2878	10.82%	2172	18.18%	3.38%	13.03%
HCLTECH	1621.05	16.90	1.05%	49.06	801	2012	19.44%	1235	31.26%	-5.68%	2.97%
HDFCBANK	1816.00	16.00	0.89%	195.51	3570	1880	3.40%	1421	27.77%	6.35%	24.75%
HDFCLIFE	672.90	-7.00	-1.03%	20.20	137	761	11.60%	511	31.58%	9.16%	8.98%
HEROMOTOCO	3630.00	3.65	0.10%	5.44	198	6246	41.89%	3462	4.86%	-5.87%	-22.58%
HINDALCO	692.00	-9.50	-1.35%	45.52	315	773	10.44%	545	26.97%	7.34%	28.07%
HINDUNILVR	2264.70	8.50	0.38%	22.29	506	3035	25.38%	2136	6.03%	0.65%	-0.02%
ICICIBANK	1341.95	-16.20	-1.19%	164.19	2210	1373	2.26%	1048	28.04%	10.15%	24.57%
INDUSINDBK	635.15	-34.30	-5.12%	186.15	1200	1576	59.71%	606	4.81%	-35.86%	-55.73%
INFY	1619.25	26.50	1.66%	98.90	1608	2006	19.30%	1358	19.21%	-12.25%	5.56%
ITC	409.20	-1.70	-0.41%	203.38	836	529	22.57%	391	4.60%	2.49%	-4.13%
JSWSTEEL	1059.80	-1.55	-0.15%	15.72	167	1075	1.40%	815	29.97%	8.09%	28.68%
KOTAKBANK	2171.90	-4.25	-0.20%	73.42	1606	2203	1.39%	1544	40.68%	11.42%	22.50%
LT	3452.85	-29.00	-0.83%	42.36	1472	3964	12.88%	3141	9.93%	5.03%	-3.76%
M&M	2730.50	-44.20	-1.59%	35.77	984	3271	16.52%	1855	47.17%	3.95%	47.68%
MARUTI	11824.90	-97.35	-0.82%	5.14	614	13680	13.56%	10725	10.26%	-3.26%	-3.37%
NESTLEIND	2250.00	-13.55	-0.60%	7.42	167	2778	19.01%	2110	6.64%	2.19%	-12.04%
NTPC	365.15	-1.80	-0.49%	231.89	852	448	18.58%	293	24.71%	12.48%	12.99%
ONGC	241.71	-2.12	-0.87%	89.16	217	345	29.94%	215	12.17%	1.64%	-7.38%
POWERGRID	289.55	-2.30	-0.79%	169.84	495	366	20.94%	247	17.08%	11.44%	5.84%
RELIANCE	1285.25	-16.85	-1.29%	137.14	1770	1609	20.11%	1156	11.18%	6.02%	-55.26%
SBILIFE	1555.45	-14.35	-0.91%	12.41	194	1936	19.66%	1308	18.95%	4.98%	4.58%
SBIN	770.35	-10.45	-1.34%	151.90	1180	912	15.53%	680	13.29%	8.14%	4.57%
SHRIRAMFIN	674.50	-7.50	-1.10%	52.57	355	730	7.66%	439	53.78%	16.56%	-70.74%
SUNPHARMA	1761.00	-23.80	-1.33%	14.71	260	1960	10.17%	1377	27.87%	8.58%	10.93%
TATACONSUM	970.00	-0.45	-0.05%	15.70	152	1250	22.41%	883	9.87%	-3.34%	-13.56%
TATAMOTORS	707.50	-6.00	-0.84%	136.17	972	1179	39.99%	606	16.69%	5.99%	-27.18%
TATASTEEL	156.27	-2.15	-1.36%	284.67	448	185	15.35%	123	27.44%	12.55%	4.36%
TCS	3641.00	12.05	0.33%	31.35	1152	4592	20.71%	3457	5.32%	-4.15%	-7.21%
TECHM	1451.20	-7.45	-0.51%	20.56	301	1808	19.72%	1163	24.79%	-11.57%	15.52%
TITAN	3048.30	-30.80	-1.00%	11.74	360	3867	21.17%	2985	2.12%	-3.17%	-16.93%
TRENT	5183.00	128.30	2.54%	14.62	755	8345	37.89%	3843	34.87%	0.13%	28.01%
ULTRACEMCO	11406.00	354.80	3.21%	7.54	861	12145	6.09%	9250	23.31%	-0.95%	14.14%
WIPRO	269.95	0.55	0.20%	125.64	342	325	16.84%	209	29.47%	-12.06%	-44.69%

Disclaimer / Disclosures

ANALYST CERTIFICATION

I, Mrs. Vaishali Parekh B.com, Research Analyst, author and the name subscribed to this report, hereby certify that all of the views expressed in this research report accurately reflect our views about the subject issuer(s) or securities. We also certify that no part of our compensation was, is, or will be directly or indirectly related to the specific recommendation(s) or view(s) in this report.

Terms & conditions and other disclosures:

Prabhudas Lilladher Pvt. Ltd, Mumbai, India (hereinafter referred to as "PL") is engaged in the business of Stock Broking, Portfolio Manager, Depository Participant and distribution for third party financial products. PL is a subsidiary of Prabhudas Lilladher Advisory Services Pvt Ltd. which has its various subsidiaries engaged in business of commodity broking, investment banking, financial services (margin funding) and distribution of third party financial/other products, details in respect of which are available at www.plindia.com

This document has been prepared by the Research Division of PL and is meant for use by the recipient only as information and is not for circulation. This document is not to be reported or copied or made available to others without prior permission of PL. It should not be considered or taken as an offer to sell or a solicitation to buy or sell any security.

The information contained in this report has been obtained from sources that are considered to be reliable. However, PL has not independently verified the accuracy or completeness of the same. Neither PL nor any of its affiliates, its directors or its employees accepts any responsibility of whatsoever nature for the information, statements and opinion given, made available or expressed herein or for any omission therein.

Recipients of this report should be aware that past performance is not necessarily a guide to future performance and value of investments can go down as well. The suitability or otherwise of any investments will depend upon the recipient's particular circumstances and, in case of doubt, advice should be sought from an independent expert/advisor.

Either PL or its affiliates or its directors or its employees or its representatives or its clients or their relatives may have position(s), make market, act as principal or engage in transactions of securities of companies referred to in this report and they may have used the research material prior to publication.

PL may from time to time solicit or perform investment banking or other services for any company mentioned in this document.

PL is registered as Research Analyst under Securities and Exchange Board of India (Research Analysts) Regulations, 2014 PL submits that no material disciplinary action has been taken on us by any Regulatory Authority impacting Equity Research Analysis activities.

PL or its research analysts or its associates or his relatives do not have any financial interest in the subject company.

PL or its research analysts or its associates or his relatives do not have actual/beneficial ownership of one per cent or more securities of the subject company at the end of the month immediately preceding the date of publication of the research report.

PL or its research analysts or its associates or his relatives do not have any material conflict of interest at the time of publication of the research report.

PL or its associates might have received compensation from the subject company in the past twelve months.

PL or its associates might have managed or co-managed public offering of securities for the subject company in the past twelve months or mandated by the subject company for any other assignment in the past twelve months.

PL or its associates might have received any compensation for investment banking or merchant banking or brokerage services from the subject company in the past twelve months.

PL or its associates might have received any compensation for products or services other than investment banking or merchant banking or brokerage services from the subject company in the past twelve months PL or its associates might have received any compensation or other benefits from the subject company or third party in connection with the research report.

PL encourages independence in research report preparation and strives to minimize conflict in preparation of research report. PL or its analysts did not receive any compensation or other benefits from the subject Company or third party in connection with the preparation of the research report. PL or its Research Analysts do not have any material conflict of interest at the time of publication of this report.

It is confirmed that Mrs.Vaishali Parekh B.com, Research Analyst of this report has not received any compensation from the companies mentioned in the report in the preceding twelve months compensation of our Research Analysts is not based on any specific merchant banking, investment banking or brokerage service transactions.

The Research analysts for this report certifies that all of the views expressed in this report accurately reflect his or her personal views about the subject company or companies and its or their securities, and no part of his or her compensation was, is or will be, directly or indirectly related to specific recommendations or views expressed in this report.

The research analysts for this report has not served as an officer, director or employee of the subject company PL or its research analysts have not engaged in market making activity for the subject company

Our sales people, traders, and other professionals or affiliates may provide oral or written market commentary or trading strategies to our clients that reflect opinions that are contrary to the opinions expressed herein, and our proprietary trading and investing businesses may make investment decisions that are inconsistent with the recommendations expressed herein. In reviewing these materials, you should be aware that any or all of the foregoing, among other things, may give rise to real or potential conflicts of interest.

PL and its associates, their directors and employees may (a) from time to time, have a long or short position in, and buy or sell the securities of the subject company or (b) be engaged in any other transaction involving such securities and earn brokerage or other compensation or act as a market maker in the financial instruments of the subject company or act as an advisor or lender/borrower to the subject company or may have any other potential conflict of interests with respect to any recommendation and other related information and opinions.