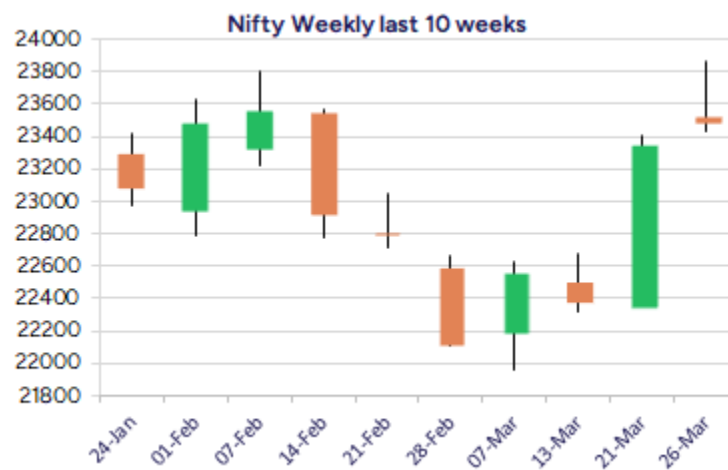
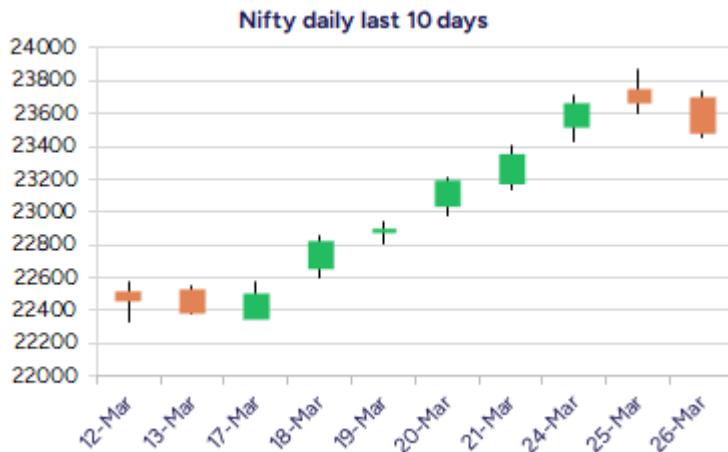


* Sensex 77288.50 -728.69

* Nifty 23486.85 -181.80

* Bank Nifty 51209.00 -398.95



*Blue candle → Close rate > Open rate * Red candle → Close rate < Open rate

Market Preview

Nifty witnesses profit booking from peak zone

Nifty cooled off further with profit booking witnessed with bias maintained intact. BankNifty after finding resistance near the 52000 zone slipped down with profit booking seen to end near the 51200 level with bias still positive. The market breadth was negative with the advance decline indicating a ratio of 1:3 at close.

Market Forecast

Nifty daily range 23300-23700

Nifty, after failing to capitalise on the positive opening session, was subjected to profit booking to cool off after the strong rally witnessed in the last one week to end the session near 23500 zone with bias still maintained positive as of now. The index would have the crucial and major support zone near 23000 zone with the 50EMA positioned near 23100 levels and would need to sustain above this indicator to maintain the overall sentiment intact.

BankNifty, witnessed a gradual slide during the intraday session to end near the 50200 zone with the near-term support maintained near the important 200 period MA at 51000 zone and with overall bias maintained intact, we can anticipate a further revival in the coming days provided the significant 100 period MA at 50350 level is sustained as of now.

The support for the day is seen at 23300 levels while the resistance is seen at 23700 levels. BankNifty would have the daily range of 50800-51800 levels.

Indices	Period	Closing	% Chng	Trend	Reversal	2 Sup	1 Sup	Pivot	1 Res	2 Res
Nifty	Daily	23486.85	-0.77%	15	23460.85	23274	23380	23558	23665	23843
	Weekly	23350.40	4.26%	1	22351.75	21986	22668	23035	23718	24085
	Monthly	23508.40	-0.58%	-5	26264.60	22068	22788	23507	24228	24947
Bank Nifty	Daily	51209.00	-0.77%	8	51134.85	50578	50894	51385	51700	52191
	Weekly	50593.55	5.27%	1	48540.25	47345	48969	49821	51445	52297
	Monthly	49587.20	-2.50%	-5	52793.25	45873	47730	49701	51559	53530
Sensex	Daily	77288.50	-0.93%	15	77267.10	76577	76933	77550	77906	78524
	Weekly	76905.51	4.17%	1	73919.90	72669	74787	75915	78033	79160
	Monthly	77500.57	-0.82%	-5	85764.50	72808	75154	77614	79960	82419

Daily Trend turned Down

Scrip Name	LCP	Curr Trnd	Reversal
AARTIIND	389.45	5	397.75
ARVIND	321.3	5	328.85
AUROPHARMA	1157.45	14	1184.1
BALRAMCHIN	529.7	13	533.05
DEEPAKNTR	2016.7	14	2036.5
DELTACORP	85.12	5	87.55
DLF	680.45	6	691.25
ENGINERSIN	156.35	14	163.1
GRANULES	492.45	7	501.2
GREAVESCOT	213.8	6	218.25
HUDCO	196.72	14	202.35
ICIL	260.15	6	267.6

* Trends turned Down after a significant period

Daily Trend turned Down

Scrip Name	LCP	Curr Trnd	Reversal
INDHOTEL	808.2	14	823.9
INDIAMART	2069.35	8	2096.15
IRCTC	704.45	6	714.5
JUSTDIAL	831	5	856.35
KEC	761.45	7	791.75
MFSL	1117.6	6	1128.3
MGL	1348.3	14	1365.3
OIL	380.9	14	390.45
PVR	926.25	6	952.35
RECLTD	425.6	16	435
VIPIND	279.05	6	286.75
VRLOG	477.75	6	483.85

* Trends turned Down after a significant period

Gainers - Losers (Nifty 500 Stocks)

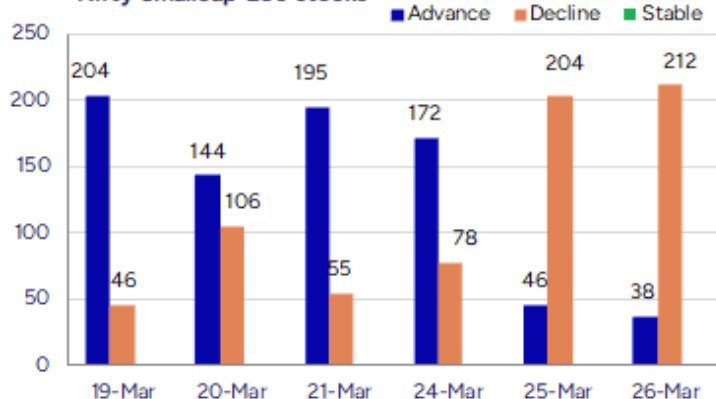
Gainers

Scrip Name	LCP	% Change	Volume
Aristo Bio-Tech	110.4	20	70400
Tourism Finance	166.42	19	11832523
Agarwal Toughen	116.8	16.16	416400
Capri Global	194.86	16	46706693
Royal Arc Elect	147.15	15.01	104400
Genus Paper	19.94	13.88	2879833
Lloyds Luxuries	88.05	12.6	65000

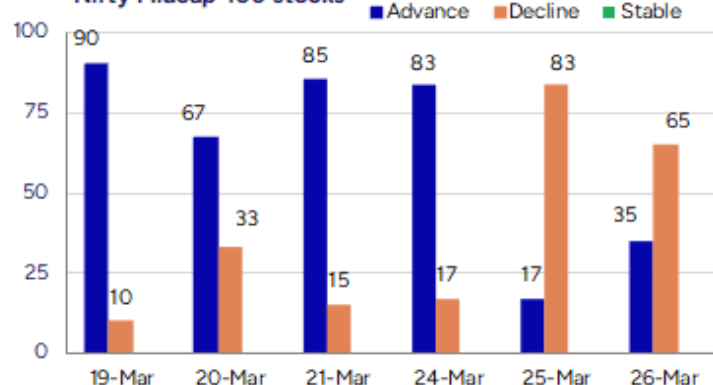
Losers

Scrip Name	LCP	% Change	Volume
NDL Ventures	61.18	-14.58	264754
SPP Polymer	14.65	-13.82	148000
D.K. Enterprise	63.45	-11.88	10500
Solve Plastic	25.65	-11.55	38400
Tridhya Tech	22.75	-10.43	30000
Upsurge Seeds	134.5	-10.36	11700
Salasar Techno	9.47	-10.32	22124759

Nifty Smallcap-250 stocks



Nifty Midcap-100 stocks



Nifty Daily chart with RSI indicator



BankNifty Daily chart with RSI indicator

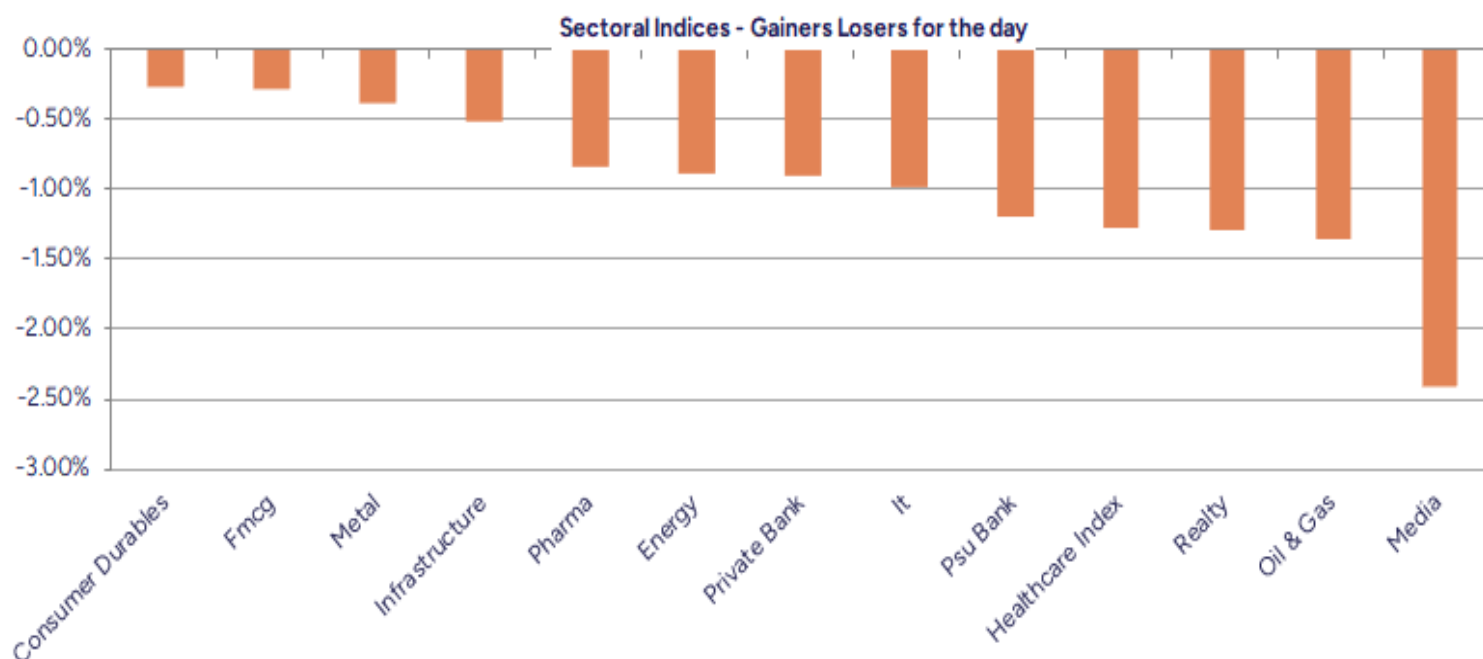


Breakouts - Cross above 200 DMA			
Company Name	LCP	Change %	200 DMA
Tokyo Plast	128.48	6.58	120.55
Aristo Bio-Tech	110.4	2.32	107.9
Supreme Infra	106.92	1.86	104.97
Maitreya Medica	283.1	1.70	278.36
Reliance Infra	253.78	1.49	250.06
Vasa Denticity	639.85	1.13	632.67
Tourism Finance	166.42	0.57	165.47
Lumax Inds	2562.15	0.38	2552.38
Gujarat Apollo	317	0.14	316.57

Breakdown - Cross below 200 DMA			
Company Name	LCP	Change %	200 DMA
IKIO Lighting	248.48	-6.46	265.64
Lotus Eye Care	64.28	-5.53	68.04
Indraprastha	380.4	-3.66	394.84
Indo Tech Trans	2212	-3.57	2293.85
Syrma SGS	469.9	-3.30	485.93
Alpa Labs	105.3	-3.23	108.82
Krishana Phosch	225.76	-2.67	231.95
Borosil Renew	495.85	-2.67	509.46
Saregama India	507.55	-2.32	519.63
Prozone Intu	28.74	-2.31	29.42
Lemon Tree Hote	131.86	-2.07	134.65
Jubilant Ing.	673.75	-1.98	687.34
Gulf Oil Lubric	1172.25	-1.95	1195.59
Manaksia Coated	76.08	-1.91	77.56
Lumax Auto Tech	542.85	-1.64	551.92
Radaan Media	3.64	-1.62	3.7
Union Bank	120.21	-1.46	121.99
Indus Infra Tru	109.42	-1.39	110.96

* Stocks crossing above its Simple Moving Average (200DMA)

* Stocks crossing below its Simple Moving Average (200DMA)



Stocks witnessing a volume surge as compared to their 5 day average volume

Watch out for the stocks that have seen a huge spurt in its share price over the last three days

Volume Shockers - NSE					
Company name	LCP	% Chg	Volume	Avg Vol *	% Chg
Atal	13.07	4.64	4625833	100889	4485
Jindal Drilling	950	5.88	1255197	34855	3501
Mastek	2432.2	15.1	4578489	142734	3108
BEW Engineering	147.1	-1.08	29500	1125	2522
Destiny Logisti	74.9	4.98	144000	6000	2300
Kamat Hotels	328.5	-2.84	1168991	48751	2298
Kaya	232.25	7.77	146749	6240	2252
Hitachi Energy	11915.2	-5.91	423056	21966	1826
Mindteck	177	10.47	802886	45376	1669
India Tourism D	585.8	3.59	703708	40428	1641
Triveni Turbine	572.85	12.54	20219526	1165130	1635
A B Infrabuild	95.99	9.98	243716	15200	1503
Jai Balaji Ind	140	3.98	803942	54390	1378
HP Adhesives	50.44	11.89	3050438	214783	1320
De Neers	287	7.19	83400	5880	1318
HEG	418.3	3.37	1106660	80062	1282
Elgi Equipments	504	-0.21	12992097	954395	1261
Thomas Scott	303.65	5	54357	4062	1238
Centum Electron	1567	16.78	185626	14212	1206
Transwarranty	13.4	3.96	160714	12848	1151

* the Average Volume of last 5 days

Price Shockers - NSE				
Company name	LCP	3 days *	% Chg	Volume
Magellanic	62.76	48.51	29.38	3688266
Keynote Finance	299.82	236.14	26.97	229490
Aristo Bio-Tech	110.4	89	24.04	70400
Vinyl Chemicals	300.06	242.47	23.75	711140
Sangam India	420.1	345.25	21.68	45147
Balaji Phosphat	94.5	79.95	18.2	52000
Power Mech	2557.3	2170.1	17.84	124430
Lambodhara Text	133.84	114.29	17.11	90394
Capri Global	194.86	166.74	16.86	46712303
Tourism Finance	166.42	143.05	16.34	11835095
Pearl Polymers	29.02	24.95	16.31	149920
HEG	499.25	429.5	16.24	24008212
Interiors Mor	453	390	16.15	3600
Websol Energy	1083.05	935.65	15.75	103302
ILandFS Engg	40.79	35.24	15.75	185754
Supreme Infra	106.92	92.38	15.74	58985
ASL Industries	35.25	30.5	15.57	6000
TIL	232.01	200.99	15.43	122081
Dhanlaxmi Bank	29.91	26.09	14.64	8269044
Almondz Global	21.54	18.84	14.33	1504016

* the % price rise of the last 3 days

Nifty 50 stocks - Summary Details											
Symbol	LTP	Chng	% Chng	Volume (lacs)	Turnover (crs.)	52w High	Diff with 52w H	52w Low	Diff with 52w L	365 days % chng	30 days % chng
NIFTY 50	23486.85	-181.80	-0.77%	2785.89	26877.00	26277.35	10.62%	21281.45	10.36%	3.83%	7.11%
ADANIENT	2314.00	-6.35	-0.27%	10.79	251.68	3743.90	38.19%	2025.00	14.27%	8.78%	-25.34%
ADANIPTS	1181.00	-1.45	-0.12%	16.76	199.21	1621.40	27.16%	995.65	18.62%	9.16%	-7.74%
APOLLOHOSP	6529.10	-115.60	-1.74%	2.82	185.31	7545.35	13.47%	5693.20	14.68%	5.18%	4.22%
ASIANPAINT	2315.00	-15.75	-0.68%	19.34	448.60	3394.90	31.81%	2124.75	8.95%	3.24%	-17.97%
AXISBANK	1094.00	-24.55	-2.19%	71.27	785.72	1339.65	18.34%	933.50	17.19%	10.86%	8.25%
BAJAJ-AUTO	7969.00	-37.00	-0.46%	3.91	312.43	12774.00	37.62%	7301.00	9.15%	-5.88%	-10.50%
BAJAJFINSV	1935.00	-10.05	-0.52%	27.80	543.26	2029.90	4.68%	1419.05	36.36%	3.50%	22.52%
BAJFINANCE	8870.00	-197.25	-2.18%	8.86	793.72	9260.05	4.21%	6375.70	39.12%	7.99%	34.11%
BEL	299.25	-0.78	-0.26%	238.69	720.43	340.50	12.11%	195.95	52.72%	17.15%	51.91%
BHARTIARTL	1733.10	2.60	0.15%	71.42	1244.31	1779.00	2.58%	1183.10	46.49%	5.57%	40.00%
BPCL	273.50	-5.61	-2.01%	94.75	263.64	376.00	27.26%	234.01	16.88%	11.07%	-52.92%
BRITANNIA	4850.00	4.80	0.10%	4.53	219.75	6469.90	25.04%	4506.00	7.63%	0.28%	-0.41%
CIPLA	1473.50	-37.70	-2.49%	13.76	204.82	1702.05	13.43%	1317.25	11.86%	2.40%	2.02%
COALINDIA	394.00	-4.30	-1.08%	50.25	199.73	543.55	27.51%	349.25	12.81%	7.66%	-7.79%
DRREDDY	1161.40	-16.50	-1.40%	28.64	333.37	1421.49	18.30%	1092.45	6.31%	2.27%	-81.01%
EICHERMOT	5398.00	-33.25	-0.61%	3.85	209.23	5575.50	3.18%	3886.10	38.91%	9.45%	36.18%
GRASIM	2585.00	15.55	0.61%	5.55	143.43	2877.75	10.17%	2171.60	19.04%	5.69%	15.56%
HCLTECH	1625.65	0.75	0.05%	30.97	506.12	2012.20	19.21%	1235.00	31.63%	-4.46%	4.30%
HDFCBANK	1803.00	-18.45	-1.01%	122.39	2220.33	1880.00	4.10%	1421.25	26.86%	7.62%	26.24%
HDFCLIFE	671.15	-1.95	-0.29%	22.31	149.66	761.20	11.83%	511.40	31.24%	8.07%	7.89%
HEROMOTOCO	3653.00	25.05	0.69%	7.56	274.69	6246.25	41.52%	3461.60	5.53%	-5.83%	-22.55%
HINDALCO	691.00	-2.45	-0.35%	36.46	253.46	772.65	10.57%	545.00	26.79%	6.11%	26.60%
HINDUNILVR	2246.30	-25.00	-1.10%	14.17	320.03	3035.00	25.99%	2136.00	5.16%	1.32%	0.65%
ICICIBANK	1335.45	-8.25	-0.61%	108.60	1456.83	1373.00	2.73%	1048.10	27.42%	8.98%	23.24%
INDUSINDBK	658.30	21.25	3.34%	235.06	1540.94	1576.35	58.24%	606.00	8.63%	-38.97%	-57.87%
INFY	1599.00	-29.45	-1.81%	66.51	1071.37	2006.45	20.31%	1358.35	17.72%	-10.28%	7.93%
ITC	407.40	-2.40	-0.59%	138.91	568.19	528.50	22.91%	391.20	4.14%	2.22%	-4.39%
JSWSTEEL	1053.00	-8.70	-0.82%	12.54	132.66	1074.90	2.04%	815.40	29.14%	8.13%	28.72%
KOTAKBANK	2148.65	-21.35	-0.98%	30.17	647.52	2202.50	2.44%	1543.85	39.17%	11.11%	22.16%
LT	3451.00	-18.60	-0.54%	23.16	800.92	3963.50	12.93%	3141.00	9.87%	4.66%	-4.10%
M&M	2742.05	6.05	0.22%	31.12	858.55	3270.95	16.17%	1855.30	47.80%	2.50%	45.62%
MARUTI	11745.00	-123.90	-1.04%	4.79	563.39	13680.00	14.14%	10725.00	9.51%	-3.69%	-3.80%
NESTLEIND	2240.10	-14.75	-0.65%	5.33	120.21	2778.00	19.36%	2110.00	6.17%	1.80%	-12.38%
NTPC	354.05	-12.90	-3.52%	186.68	671.08	448.45	21.05%	292.80	20.92%	12.48%	12.99%
ONGC	239.90	-2.35	-0.97%	75.44	182.18	345.00	30.46%	215.48	11.33%	0.98%	-7.98%
POWERGRID	292.30	1.30	0.45%	203.67	597.08	366.25	20.19%	247.30	18.20%	11.11%	5.53%
RELIANCE	1270.90	-14.55	-1.13%	120.75	1544.38	1608.80	21.00%	1156.00	9.94%	4.67%	-55.83%
SBILIFE	1545.00	-12.20	-0.78%	11.07	171.24	1936.00	20.20%	1307.70	18.15%	4.13%	3.74%
SBIN	762.70	-10.15	-1.31%	77.12	592.18	912.00	16.37%	680.00	12.16%	7.04%	3.50%
SHRIRAMFIN	673.45	-4.90	-0.72%	47.92	323.47	730.45	7.80%	438.60	53.55%	15.94%	-70.90%
SUNPHARMA	1750.05	-14.70	-0.83%	17.62	309.60	1960.35	10.73%	1377.20	27.07%	7.36%	9.69%
TATACONSUM	956.95	-13.75	-1.42%	13.99	134.73	1250.10	23.45%	882.90	8.39%	-3.32%	-13.54%
TATAMOTORS	707.40	-2.90	-0.41%	93.63	666.06	1179.00	40.00%	606.30	16.67%	5.51%	-27.51%
TATASTEEL	155.07	-1.66	-1.06%	231.83	362.67	184.60	16.00%	122.62	26.46%	11.35%	3.25%
TCS	3630.55	-27.20	-0.74%	17.34	634.16	4592.25	20.94%	3457.00	5.02%	-3.39%	-6.47%
TECHM	1410.50	-45.00	-3.09%	22.31	318.36	1807.70	21.97%	1162.95	21.29%	-11.76%	15.27%
TITAN	3060.00	6.30	0.21%	10.10	309.03	3867.00	20.87%	2985.05	2.51%	-3.97%	-17.62%
TRENT	5308.00	122.95	2.37%	16.26	861.76	8345.00	36.39%	3843.00	38.12%	2.71%	31.31%
ULTRACEMCO	11401.00	-20.20	-0.18%	4.02	459.03	12145.35	6.13%	9250.00	23.25%	2.37%	17.97%
WIPRO	267.20	-3.80	-1.40%	73.08	196.49	324.60	17.68%	208.50	28.15%	-11.54%	-44.36%

Disclaimer / Disclosures

ANALYST CERTIFICATION

I, Mrs. Vaishali Parekh B.com, Research Analyst, author and the name subscribed to this report, hereby certify that all of the views expressed in this research report accurately reflect our views about the subject issuer(s) or securities. We also certify that no part of our compensation was, is, or will be directly or indirectly related to the specific recommendation(s) or view(s) in this report.

Terms & conditions and other disclosures:

Prabhudas Lilladher Pvt. Ltd, Mumbai, India (hereinafter referred to as "PL") is engaged in the business of Stock Broking, Portfolio Manager, Depository Participant and distribution for third party financial products. PL is a subsidiary of Prabhudas Lilladher Advisory Services Pvt Ltd. which has its various subsidiaries engaged in business of commodity broking, investment banking, financial services (margin funding) and distribution of third party financial/other products, details in respect of which are available at www.plindia.com

This document has been prepared by the Research Division of PL and is meant for use by the recipient only as information and is not for circulation. This document is not to be reported or copied or made available to others without prior permission of PL. It should not be considered or taken as an offer to sell or a solicitation to buy or sell any security.

The information contained in this report has been obtained from sources that are considered to be reliable. However, PL has not independently verified the accuracy or completeness of the same. Neither PL nor any of its affiliates, its directors or its employees accepts any responsibility of whatsoever nature for the information, statements and opinion given, made available or expressed herein or for any omission therein.

Recipients of this report should be aware that past performance is not necessarily a guide to future performance and value of investments can go down as well. The suitability or otherwise of any investments will depend upon the recipient's particular circumstances and, in case of doubt, advice should be sought from an independent expert/advisor.

Either PL or its affiliates or its directors or its employees or its representatives or its clients or their relatives may have position(s), make market, act as principal or engage in transactions of securities of companies referred to in this report and they may have used the research material prior to publication.

PL may from time to time solicit or perform investment banking or other services for any company mentioned in this document.

PL is registered as Research Analyst under Securities and Exchange Board of India (Research Analysts) Regulations, 2014 PL submits that no material disciplinary action has been taken on us by any Regulatory Authority impacting Equity Research Analysis activities.

PL or its research analysts or its associates or his relatives do not have any financial interest in the subject company.

PL or its research analysts or its associates or his relatives do not have actual/beneficial ownership of one per cent or more securities of the subject company at the end of the month immediately preceding the date of publication of the research report.

PL or its research analysts or its associates or his relatives do not have any material conflict of interest at the time of publication of the research report.

PL or its associates might have received compensation from the subject company in the past twelve months.

PL or its associates might have managed or co-managed public offering of securities for the subject company in the past twelve months or mandated by the subject company for any other assignment in the past twelve months.

PL or its associates might have received any compensation for investment banking or merchant banking or brokerage services from the subject company in the past twelve months.

PL or its associates might have received any compensation for products or services other than investment banking or merchant banking or brokerage services from the subject company in the past twelve months PL or its associates might have received any compensation or other benefits from the subject company or third party in connection with the research report.

PL encourages independence in research report preparation and strives to minimize conflict in preparation of research report. PL or its analysts did not receive any compensation or other benefits from the subject Company or third party in connection with the preparation of the research report. PL or its Research Analysts do not have any material conflict of interest at the time of publication of this report.

It is confirmed that Mrs.Vaishali Parekh B.com, Research Analyst of this report has not received any compensation from the companies mentioned in the report in the preceding twelve months compensation of our Research Analysts is not based on any specific merchant banking, investment banking or brokerage service transactions.

The Research analysts for this report certifies that all of the views expressed in this report accurately reflect his or her personal views about the subject company or companies and its or their securities, and no part of his or her compensation was, is or will be, directly or indirectly related to specific recommendations or views expressed in this report.

The research analysts for this report has not served as an officer, director or employee of the subject company PL or its research analysts have not engaged in market making activity for the subject company

Our sales people, traders, and other professionals or affiliates may provide oral or written market commentary or trading strategies to our clients that reflect opinions that are contrary to the opinions expressed herein, and our proprietary trading and investing businesses may make investment decisions that are inconsistent with the recommendations expressed herein. In reviewing these materials, you should be aware that any or all of the foregoing, among other things, may give rise to real or potential conflicts of interest.

PL and its associates, their directors and employees may (a) from time to time, have a long or short position in, and buy or sell the securities of the subject company or (b) be engaged in any other transaction involving such securities and earn brokerage or other compensation or act as a market maker in the financial instruments of the subject company or act as an advisor or lender/borrower to the subject company or may have any other potential conflict of interests with respect to any recommendation and other related information and opinions.