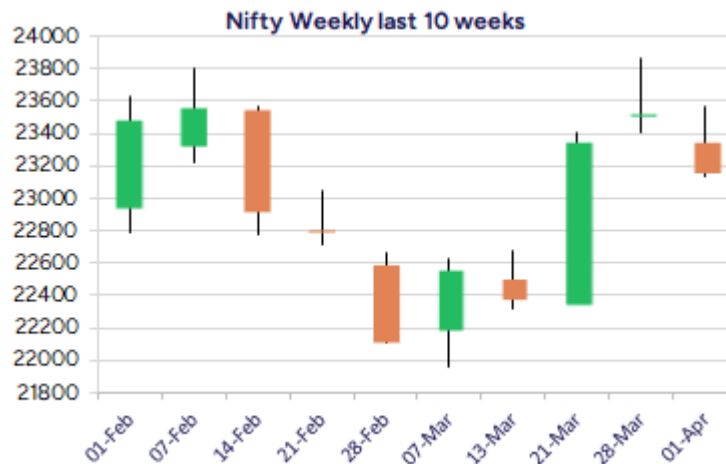
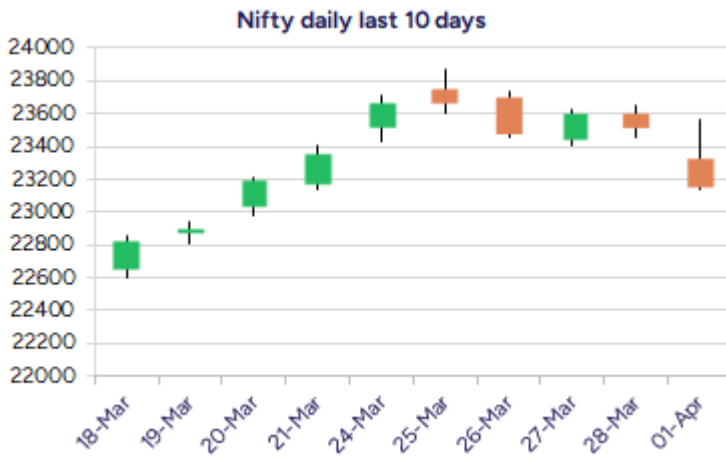


* Sensex 76024.51 -1390.41

* Nifty 23165.70 -353.65

* Bank Nifty 50827.50 -737.35



*Blue candle → Close rate > Open rate * Red candle → Close rate < Open rate

Market Preview

Nifty shed gains forming double top formation

Nifty witnessed some profit booking after indicating a double top formation on the daily chart at 23850 zone with bias slightly turning weak. BankNifty slipped below the important 200 period MA at 51000 zone with some profit booking seen among the major frontline banking stocks. The market breadth was positive with the advance decline indicating a ratio of 2:1 at close.

Market Forecast

Nifty daily range 23000-23400

Nifty, has indicated a double top formation on the daily chart at 23850 zone and with some profit booking witnessed has slipped down taking support near the important 50EMA zone at 23120 level during the intraday session. The index would have psychological base near 23000 zone while the crucial support would be positioned near the 22800 level which needs to be sustained below which the trend would turn once again weak.

BankNifty, witnessed resistance near the 52000 zone and with profit booking seen has slipped below the 200 period MA at 51000 level slightly weakening the bias. The index would have the important near term support at the 50EMA zone of 49750 level which needs to be sustained to maintain the overall bias intact. The frontline banking stocks like HDFC Bank and ICICI Bank has taken a breather, slightly slipping down with profit booking seen but has maintained the overall bias intact.

The support for the day is seen at 23000 levels while the resistance is seen at 23400 levels. BankNifty would have the daily range of 50400-51300 levels.

Indices	Period	Closing	% Chng	Trend	Reversal	2 Sup	1 Sup	Pivot	1 Res	2 Res
Nifty	Daily	23165.70	-1.50%	-2	23847.30	22860	23013	23289	23442	23718
	Weekly	23519.35	0.72%	2	22456.20	23156	23338	23604	23785	24051
	Monthly	23519.35	0.05%	-6	25020.35	21213	22366	23118	24271	25022
Bank Nifty	Daily	50827.50	-1.43%	-1	52285.65	50143	50485	51084	51427	52026
	Weekly	51564.85	1.92%	2	48907.35	50254	50910	51485	52141	52716
	Monthly	51564.85	3.99%	-6	52195.95	46118	48841	50451	53175	54785
Sensex	Daily	76024.51	-1.80%	-2	78538.00	74900	75462	76475	77037	78049
	Weekly	77414.92	0.66%	2	74177.95	76094	76754	77748	78408	79402
	Monthly	77414.92	-0.11%	-6	82130.50	70156	73785	76263	79893	82371

Daily Trend turned Up

Scrip Name	LCP	Curr Trnd	Reversal
ABREL	1970.15	-2	1966.05
BANDHANBNK	149.48	-1	147
CUB	160.05	-2	158.15
HSCL	435.85	-3	432.75
HUDCO	206.41	-3	204.1
ICIL	268.15	-3	262.7
INDUSTOWER	352.45	-4	341.55
LTTS	4563.1	-3	4528.75
PVR	962.6	-3	936.15
RAIN	139.36	-3	137.1
SAIL	116.88	-3	115.55
TVSMOTOR	2440.85	-1	2433.7

* Trends turned Up after a significant period

Daily Trend turned Down

Scrip Name	LCP	Curr Trnd	Reversal
ABB	5399.15	10	5514.5
APLLTD	896.85	18	936.2
BEL	292	19	301.1
COFORGE	7780.8	9	7961.25
ESCORTS	3218.8	10	3250.65
HDFCBANK	1767.85	12	1823.2
IPCALAB	1390.85	10	1465.7
LTI	4426.6	7	4515.4
NAUKRI	6804.9	9	7089.2
ORACLEFIN	7585.35	13	7807.1
TATACHEM	839.75	10	854
TCS	3550.8	9	3612

* Trends turned Down after a significant period

Gainers - Losers (Nifty 500 Stocks)

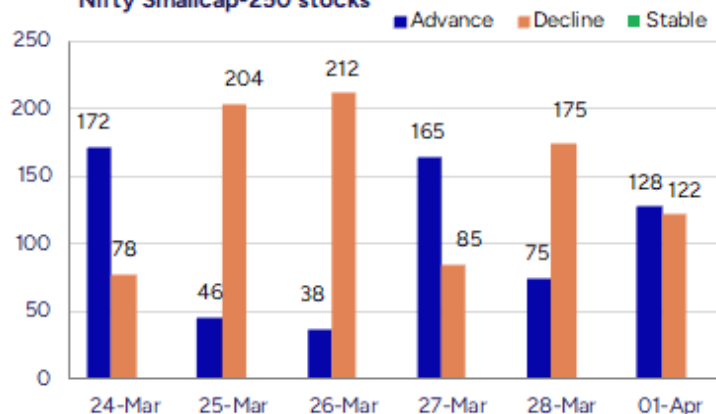
Gainers

Scrip Name	LCP	% Change	Volume
Radiant Cash	61.29	19.99	1389832
Rajputana Bio	211.4	19.98	68000
WOL 3D India	129.1	19.98	8000
Zenith Drugs	86	19.94	152800
Durlax Top Surf	40.4	19.88	210000
Vilin Bio	24.45	19.85	36000
QMS Medical	89	18.98	36000

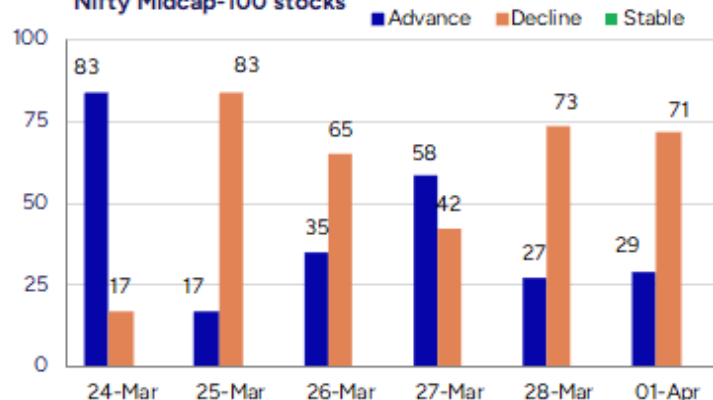
Losers

Scrip Name	LCP	% Change	Volume
Punjab and Sind	34.86	-20.01	22167425
UCO Bank	31.2	-12.61	43804082
Mahickra Chemic	111.85	-10.81	39750
Royal Arc Elect	135.65	-10.23	40800
Arihant Academy	290	-10.01	22400
Holmarc Opto	125.2	-9.9	61500
DRC Systems	27.74	-7.53	516101

Nifty Smallcap-250 stocks



Nifty Midcap-100 stocks



Nifty Daily chart with RSI indicator



BankNifty Daily chart with RSI indicator



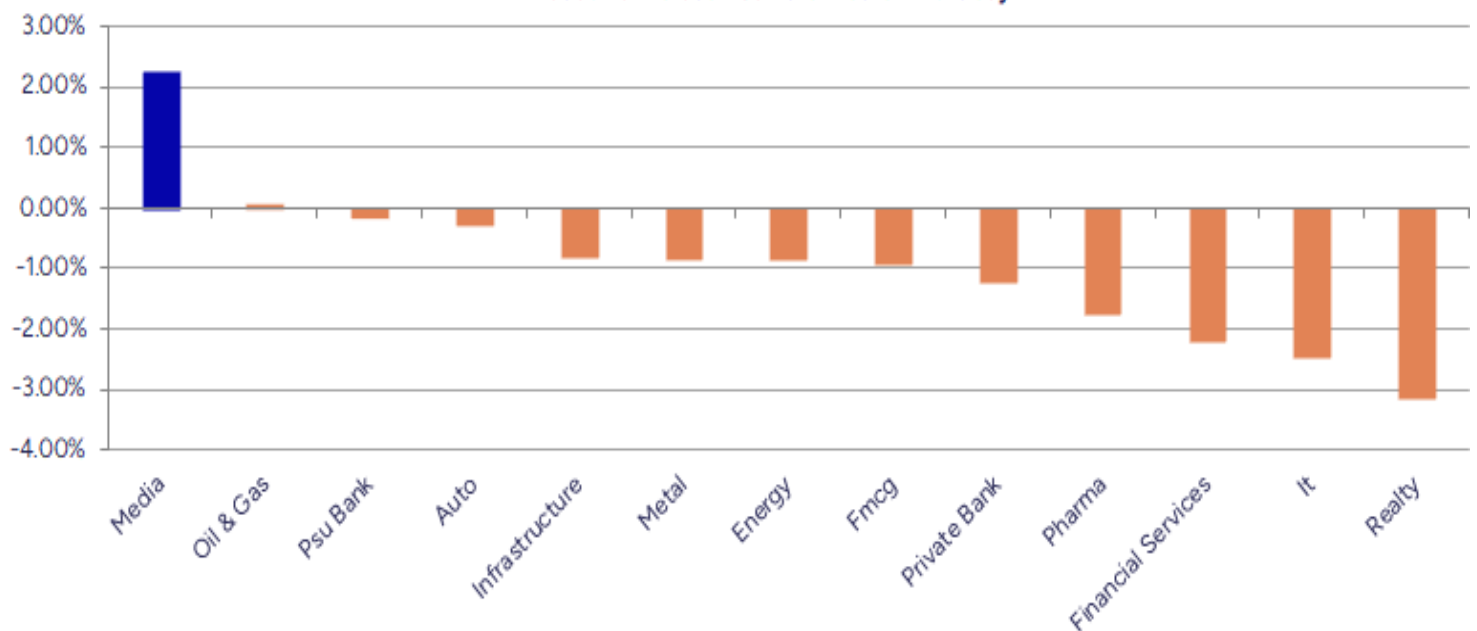
Breakouts - Cross above 200 DMA			
Company Name	LCP	Change %	200 DMA
Vilin Bio Med	24.45	18.40	20.65
Avonmore Cap	17.86	4.81	17.04
Presstonic	114.2	4.41	109.38
Jindal Worldwid	73.98	3.61	71.4
Ram Ratna Wires	557.45	3.04	540.98
Unihealth Hospi	146	3.00	141.75
Medicamen Bio	493.55	2.60	481.05
SKP Bearing	233.5	2.43	227.97
Aurionpro Solut	1638.45	2.09	1604.91
Lemon Tree Hote	137.06	1.93	134.46
DCM	99.34	1.71	97.67
Shivalik Rasa	653.45	1.53	643.59
Indiabulls Ent	15.81	1.28	15.61
Rubfila Intl	65.11	1.24	64.31
Prozone Intu	29.71	1.09	29.39
Sudarshan Chem	1010	1.06	999.41
EPack Durables	375.9	0.89	372.57
Lumax Inds	2570.05	78.00%	2550.17

* Stocks crossing above its Simple Moving Average (200DMA)

Breakdown - Cross below 200 DMA			
Company Name	LCP	Change %	200 DMA
Persistent	5211.55	-3.85	5420.08
Ipca Labs	1390.85	-3.59	1442.58
DCM Shriram	1046.5	-2.98	1078.68
Hitachi Energy	12280.55	-2.86	12642.38
Suven Pharma	1074.05	-2.52	1101.78
HF	547.05	-2.18	559.22
Indian Bank	530.95	-1.82	540.79
Dalmia Bharat	1786.45	-1.62	1815.86
Balu Forge Indu	625.25	-1.37	633.92
Torrent Pharma	3183.9	-1.26	3224.65
Sundaram Fin	4513.8	-1.14	4565.85
Aegis Logistics	781.8	-1.03	789.96
PNB Housing Fin	872.85	-0.90	880.77
Glenmark	1509.2	-0.79	1521.17
Rainbow Childre	1371.25	-0.74	1381.41
LT Foods	362.4	-0.74	365.09
TD Power System	396.8	-0.63	399.32
Stardeck Financ	279.55	-0.59	281.21

* Stocks crossing below its Simple Moving Average (200DMA)

Sectoral Indices - Gainers Losers for the day



Stocks witnessing a volume surge as compared to their 5 day average volume

Watch out for the stocks that have seen a huge spurt in its share price over the last three days

Volume Shockers - NSE					
Company name	LCP	% Chg	Volume	Avg Vol *	% Chg
Atul Auto	505.1	14.37	1915570	24678	7662
Jindal Worldwid	73.98	3.66	8478245	138074	6040
Hester Bio	1488.95	18.69	300264	5893	4996
BEW Engineering	151.5	2.96	42000	1125	3633
Galaxy Surfacta	2091.75	2.12	434155	12237	3448
RHI Magnesita	533.65	5.19	4032771	192099	1999
Mahickra Chemic	111.85	-10.81	39750	1950	1938
Punjab & Sind	34.86	-20.01	22167436	1138710	1847
Vadilal Ind	5240.3	14.11	297290	17133	1635
Hind Motors	23.6	11.37	7142589	416435	1615
Punjab Chemical	1009.55	8.91	137939	8140	1594
Krishna Institu	618.2	-3.35	909037	59456	1429
Innovana	333	12.14	84504	5600	1409
Gallantt Ispat	408	7	510749	33914	1406
Rossell India	61.36	13.92	428233	29061	1374
Capri Global	171.46	0.73	14134189	1000204	1313
HEG	482.55	-0.06	1129886	80062	1311
Dr Reddys Labs	1152.2	0.7	4157955	296967	1300
UCO Bank	31.2	-12.61	43804438	3241793	1251
Sarthak Metals	122.73	3.2	383106	28574	1241

* the Average Volume of last 5 days

Price Shockers - NSE				
Company name	LCP	3 days *	% Chg	Volume
MBL Infra	51.18	34.5	48.35	769780
Jindal Worldwid	73.98	55.26	33.88	8479225
Punjab Chemical	1009.55	802.55	25.79	137939
BSE Limited	5466	4474.7	22.15	4648907
Baweja Studios	55.3	45.45	21.67	70400
Anik Industries	127.73	106.4	20.05	53429
Aurionpro Solut	1638.45	1377.05	18.98	50284
Medico Remedies	53.3	44.88	18.76	1710365
CL Educate	84.48	71.15	18.74	103543
Rajshree Polypa	24.37	20.67	17.9	231899
Pentagon Rubber	74.2	63.05	17.68	120000
North Eastern	24.68	20.99	17.58	373895
Privi Special	1787.25	1527	17.04	61644
Mold Tek Tech	159.73	136.86	16.71	441871
Peria Karamalai	811.7	700.35	15.9	3043
Authum Invest	1778.5	1536	15.79	119171
Websol Energy	1253.75	1083.05	15.76	288013
ASL Industries	40.75	35.25	15.6	38000
Godfrey Phillip	7107.65	6157.15	15.44	145136
Veto Switch	112.96	97.86	15.43	357851

* the % price rise of the last 3 days

Nifty 50 stocks - Summary Details											
Symbol	LTP	Chng	% Chng	Volume (lacs)	Turnover (crs.)	52w High	Diff with 52w H	52w Low	Diff with 52w L	365 days % chng	30 days % chng
NIFTY 50	23165.70	-353.65	-1.50%	3751.13	30680.24	26277.35	11.84%	21281.45	8.85%	6.30%	5.34%
ADANIENT	2340.00	24.20	1.04%	5.02	117.21	3743.90	37.50%	2025.00	15.56%	10.49%	-27.57%
ADANIPTS	1176.50	-6.45	-0.55%	15.85	187.49	1621.40	27.44%	995.65	18.16%	10.62%	-11.84%
APOLLOHOSP	6632.25	16.05	0.24%	3.20	211.62	7545.35	12.10%	5693.20	16.49%	9.31%	4.08%
ASIANPAINT	2316.70	-23.95	-1.02%	9.71	225.84	3394.90	31.76%	2124.75	9.03%	7.38%	-17.78%
AXISBANK	1085.20	-16.80	-1.52%	66.38	719.74	1339.65	18.99%	933.50	16.25%	8.51%	5.23%
BAJAJ-AUTO	7975.00	96.15	1.22%	2.84	225.71	12774.00	37.57%	7301.00	9.23%	-0.30%	-13.87%
BAJAJFINSV	1941.90	-65.45	-3.26%	21.26	416.20	2029.90	4.34%	1419.05	36.85%	7.21%	22.11%
BAJFINANCE	8719.35	-226.25	-2.53%	11.83	1036.87	9260.05	5.84%	6375.70	36.76%	4.87%	23.47%
BEL	290.90	-10.45	-3.47%	331.70	989.01	340.50	14.57%	199.00	46.18%	22.36%	49.54%
BHARTIARTL	1723.60	-9.80	-0.57%	67.73	1173.38	1779.00	3.11%	1183.10	45.69%	10.39%	41.09%
CIPLA	1447.00	4.80	0.33%	10.80	156.48	1702.05	14.98%	1317.25	9.85%	2.47%	-3.66%
COALINDIA	398.00	-0.20	-0.05%	43.33	172.92	543.55	26.78%	349.25	13.96%	7.81%	-8.27%
DRREDDY	1150.00	5.80	0.51%	41.58	479.47	1421.49	19.10%	1092.45	5.27%	2.48%	-81.42%
EICHERMOT	5301.15	-46.55	-0.87%	5.62	300.97	5575.50	4.92%	3886.10	36.41%	12.03%	33.05%
GRASIM	2612.05	0.90	0.03%	3.18	83.11	2877.75	9.23%	2171.60	20.28%	13.20%	14.16%
HCLTECH	1534.50	-58.00	-3.64%	41.27	639.34	2012.20	23.74%	1235.00	24.25%	1.11%	3.17%
HDFCBANK	1769.90	-58.30	-3.19%	142.56	2539.96	1880.00	5.86%	1426.80	24.05%	5.53%	26.27%
HDFCLIFE	693.00	7.30	1.06%	46.20	320.18	761.20	8.96%	511.40	35.51%	12.69%	8.27%
HEROMOTOCO	3767.00	44.05	1.18%	5.06	191.11	6246.25	39.69%	3461.60	8.82%	1.14%	-21.16%
HINDALCO	663.50	-18.95	-2.78%	51.31	343.19	772.65	14.13%	555.30	19.48%	7.58%	21.81%
HINDUNILVR	2237.00	-21.85	-0.97%	24.96	559.58	3035.00	26.29%	2136.00	4.73%	3.13%	-0.24%
ICICIBANK	1318.15	-30.20	-2.24%	142.88	1895.76	1373.00	3.99%	1048.10	25.77%	11.98%	23.33%
INDUSINDBK	682.70	32.85	5.06%	140.20	952.32	1576.35	56.69%	606.00	12.66%	-34.37%	-58.16%
INFY	1530.20	-40.45	-2.58%	126.81	1939.40	2006.45	23.74%	1358.35	12.65%	-6.94%	4.85%
ITC	406.60	-3.15	-0.77%	152.06	622.36	528.50	23.07%	391.20	3.94%	3.73%	-4.34%
JIOFIN	230.94	3.43	1.51%	187.82	430.06	394.70	41.49%	198.65	16.25%	9.59%	-35.69%
JSWSTEEL	1060.00	-3.20	-0.30%	17.76	188.21	1074.90	1.39%	820.00	29.27%	11.83%	28.07%
KOTAKBANK	2144.30	-26.90	-1.24%	37.51	806.39	2202.50	2.64%	1543.85	38.89%	14.10%	21.60%
LT	3438.30	-54.00	-1.55%	19.35	667.85	3963.50	13.25%	3141.00	9.47%	10.38%	-7.22%
M&M	2640.00	-25.80	-0.97%	33.00	878.73	3270.95	19.29%	1870.35	41.15%	3.12%	38.75%
MARUTI	11455.25	-66.90	-0.58%	4.98	568.76	13680.00	16.26%	10725.00	6.81%	-3.55%	-8.56%
NESTLEIND	2234.90	-15.85	-0.70%	10.20	229.87	2778.00	19.55%	2110.00	5.92%	2.79%	-14.17%
NTPC	352.95	-4.65	-1.30%	187.36	664.22	448.45	21.30%	292.80	20.54%	14.82%	6.49%
ONGC	248.29	1.91	0.78%	112.59	280.26	345.00	28.03%	215.48	15.23%	9.38%	-8.08%
POWERGRID	289.10	-1.25	-0.43%	116.02	338.12	366.25	21.06%	247.30	16.90%	15.75%	4.86%
RELIANCE	1254.00	-21.10	-1.65%	120.99	1525.39	1608.80	22.05%	1156.00	8.48%	6.25%	-57.09%
SBILIFE	1542.30	-5.55	-0.36%	9.38	145.31	1936.00	20.34%	1307.70	17.94%	8.20%	3.17%
SBIN	771.25	-0.25	-0.03%	70.11	541.36	912.00	15.43%	680.00	13.42%	12.01%	2.55%
SHRIRAMFIN	637.85	-18.15	-2.77%	76.01	487.98	730.45	12.68%	438.60	45.43%	6.27%	-72.20%
SUNPHARMA	1698.30	-36.40	-2.10%	41.42	705.60	1960.35	13.37%	1377.20	23.32%	8.88%	7.04%
TATACONSUM	992.40	-9.50	-0.95%	10.46	104.47	1250.10	20.61%	882.90	12.40%	3.96%	-8.60%
TATAMOTORS	672.00	-2.45	-0.36%	95.95	646.28	1179.00	43.00%	606.30	10.84%	8.67%	-32.07%
TATASTEEL	153.25	-0.99	-0.64%	291.42	447.07	184.60	16.98%	122.62	24.98%	12.42%	-1.03%
TCS	3556.45	-49.70	-1.38%	26.18	929.04	4592.25	22.56%	3457.00	2.88%	3.53%	-6.97%
TECHM	1396.50	-21.75	-1.53%	15.78	220.27	1807.70	22.75%	1162.95	20.08%	-4.68%	13.63%
TITAN	2988.45	-74.90	-2.45%	10.69	321.52	3867.00	22.72%	2982.00	0.22%	-0.45%	-19.42%
TRENT	5568.10	242.95	4.56%	22.61	1255.67	8345.00	33.28%	3843.00	44.89%	9.76%	34.88%
ULTRACEMCO	11386.80	-122.75	-1.07%	2.63	300.16	12145.35	6.25%	9250.00	23.10%	13.64%	18.06%
WIPRO	262.25	-	#VALUE!	83.89	219.13	324.60	19.21%	208.50	25.78%	-5.55%	-45.38%
ZOMATO	203.35	1.65	0.82%	633.69	1279.29	304.70	33.26%	146.30	39.00%	-9.19%	10.76%

Disclaimer / Disclosures

ANALYST CERTIFICATION

I, Mrs. Vaishali Parekh B.com, Research Analyst, author and the name subscribed to this report, hereby certify that all of the views expressed in this research report accurately reflect our views about the subject issuer(s) or securities. We also certify that no part of our compensation was, is, or will be directly or indirectly related to the specific recommendation(s) or view(s) in this report.

Terms & conditions and other disclosures:

Prabhudas Lilladher Pvt. Ltd, Mumbai, India (hereinafter referred to as "PL") is engaged in the business of Stock Broking, Portfolio Manager, Depository Participant and distribution for third party financial products. PL is a subsidiary of Prabhudas Lilladher Advisory Services Pvt Ltd. which has its various subsidiaries engaged in business of commodity broking, investment banking, financial services (margin funding) and distribution of third party financial/other products, details in respect of which are available at www.plindia.com

This document has been prepared by the Research Division of PL and is meant for use by the recipient only as information and is not for circulation. This document is not to be reported or copied or made available to others without prior permission of PL. It should not be considered or taken as an offer to sell or a solicitation to buy or sell any security.

The information contained in this report has been obtained from sources that are considered to be reliable. However, PL has not independently verified the accuracy or completeness of the same. Neither PL nor any of its affiliates, its directors or its employees accepts any responsibility of whatsoever nature for the information, statements and opinion given, made available or expressed herein or for any omission therein.

Recipients of this report should be aware that past performance is not necessarily a guide to future performance and value of investments can go down as well. The suitability or otherwise of any investments will depend upon the recipient's particular circumstances and, in case of doubt, advice should be sought from an independent expert/advisor.

Either PL or its affiliates or its directors or its employees or its representatives or its clients or their relatives may have position(s), make market, act as principal or engage in transactions of securities of companies referred to in this report and they may have used the research material prior to publication.

PL may from time to time solicit or perform investment banking or other services for any company mentioned in this document.

PL is registered as Research Analyst under Securities and Exchange Board of India (Research Analysts) Regulations, 2014 PL submits that no material disciplinary action has been taken on us by any Regulatory Authority impacting Equity Research Analysis activities.

PL or its research analysts or its associates or his relatives do not have any financial interest in the subject company.

PL or its research analysts or its associates or his relatives do not have actual/beneficial ownership of one per cent or more securities of the subject company at the end of the month immediately preceding the date of publication of the research report.

PL or its research analysts or its associates or his relatives do not have any material conflict of interest at the time of publication of the research report.

PL or its associates might have received compensation from the subject company in the past twelve months.

PL or its associates might have managed or co-managed public offering of securities for the subject company in the past twelve months or mandated by the subject company for any other assignment in the past twelve months.

PL or its associates might have received any compensation for investment banking or merchant banking or brokerage services from the subject company in the past twelve months.

PL or its associates might have received any compensation for products or services other than investment banking or merchant banking or brokerage services from the subject company in the past twelve months PL or its associates might have received any compensation or other benefits from the subject company or third party in connection with the research report.

PL encourages independence in research report preparation and strives to minimize conflict in preparation of research report. PL or its analysts did not receive any compensation or other benefits from the subject Company or third party in connection with the preparation of the research report. PL or its Research Analysts do not have any material conflict of interest at the time of publication of this report.

It is confirmed that Mrs.Vaishali Parekh B.com, Research Analyst of this report has not received any compensation from the companies mentioned in the report in the preceding twelve months compensation of our Research Analysts is not based on any specific merchant banking, investment banking or brokerage service transactions.

The Research analysts for this report certifies that all of the views expressed in this report accurately reflect his or her personal views about the subject company or companies and its or their securities, and no part of his or her compensation was, is or will be, directly or indirectly related to specific recommendations or views expressed in this report.

The research analysts for this report has not served as an officer, director or employee of the subject company PL or its research analysts have not engaged in market making activity for the subject company

Our sales people, traders, and other professionals or affiliates may provide oral or written market commentary or trading strategies to our clients that reflect opinions that are contrary to the opinions expressed herein, and our proprietary trading and investing businesses may make investment decisions that are inconsistent with the recommendations expressed herein. In reviewing these materials, you should be aware that any or all of the foregoing, among other things, may give rise to real or potential conflicts of interest.

PL and its associates, their directors and employees may (a) from time to time, have a long or short position in, and buy or sell the securities of the subject company or (b) be engaged in any other transaction involving such securities and earn brokerage or other compensation or act as a market maker in the financial instruments of the subject company or act as an advisor or lender/borrower to the subject company or may have any other potential conflict of interests with respect to any recommendation and other related information and opinions.