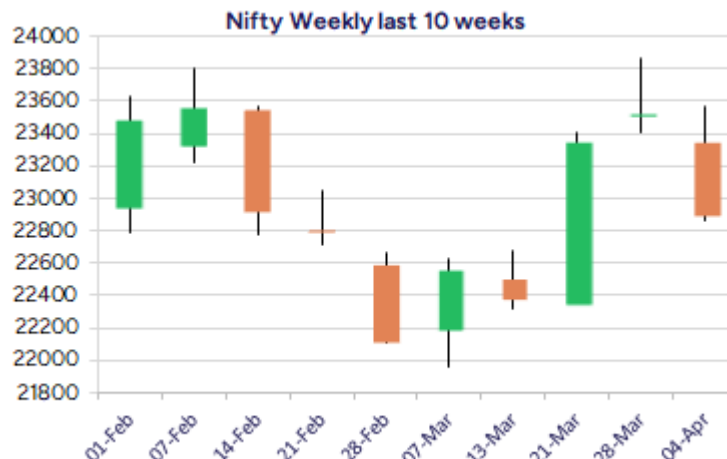
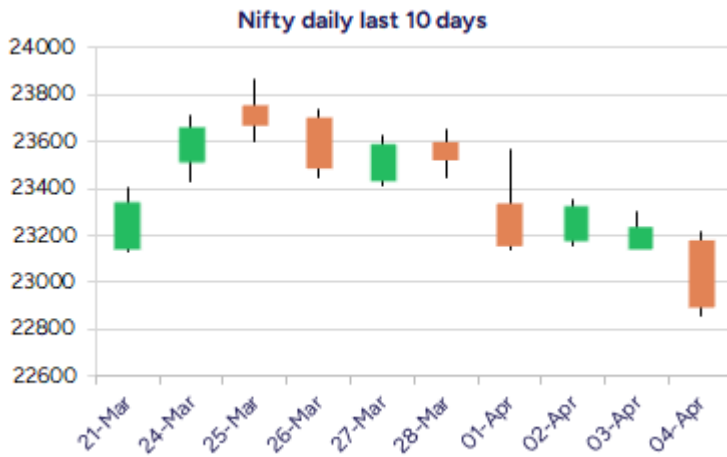


* Sensex 75364.69 - 930.67

* Nifty 22904.45 - 345.65

* Bank Nifty 51502.70 - 94.65



*Blue candle → Close rate > Open rate * Red candle → Close rate < Open rate

Market Preview

Nift tanks below 23000 zone; bias weakens

Nifty broke the important support zone of 23000 level during the intraday session weakening the bias and would need to check whether the index sustains the 22800 zone in the coming session. BankNifty however, showed strength as compared to other sectors and closed above the 51500 zone. The market breadth was weak with the advance decline indicating a ratio of 1:3 at close.

Market Forecast

Nifty daily range 22800-23100

Nifty, tanked below the important 50EMA level of 23120 zone on the back of weak cues from the Tariff imposed by US and moving below the 23000 zone has weakened the bias, once again with the sentiment maintained with a very cautious approach. The zone near the 22800 would be the crucial and important support level below which the index would once again come inside the descending channel range opening the gates on the downside.

BankNifty, once again indicated resilience amid the weak scenario and closed above the 51500 zone with strength indicated and with overall bias maintained positive, need to pick up and breach above the 52000 zone decisively to trigger for fresh upward move in the coming days. The coming 2-3 sessions would be very crucial which would decide the further directional move of the indices.

The support for the day is seen at 22800 levels while the resistance is seen at 23100 levels. BankNifty would have the daily range of 51200-52000 levels.

Indices	Period	Closing	% Chng	Trend	Reversal	2 Sup	1 Sup	Pivot	1 Res	2 Res
Nifty	Daily	22904.45	-1.49%	-5	23491.85	22635	22770	22992	23127	23349
	Weekly	22904.45	-2.61%	3	22573.75	22489	22697	23130	23338	23771
	Monthly	23519.35	0.05%	-6	25020.35	21213	22366	23118	24271	25022
Bank Nifty	Daily	51502.70	-0.18%	-4	51718.90	51052	51278	51586	51811	52119
	Weekly	51502.70	-0.12%	3	49564.75	50240	50871	51380	52011	52519
	Monthly	51564.85	3.99%	-6	52195.95	46118	48841	50451	53175	54785
Sensex	Daily	75364.89	-1.22%	-5	77053.60	74604	74984	75621	76002	76639
	Weekly	75364.89	-2.65%	3	74441.40	74051	74708	76095	76752	78140
	Monthly	77414.92	-0.11%	-6	82130.50	70156	73785	76263	79893	82371

Daily Trend turned Down

Scrip Name	LCP	Curr Trnd	Reversal
ACC	1966.3	13	1972.65
BALRAMCHIN	551.95	4	560.35
BATAIN	1210.1	3	1219.7
BEML	2954.75	21	3108.9
BIRLACORPN	1099.7	3	1109.6
BPCL	279.45	4	284
FSL	324.1	10	339.5
GRASIM	2616.9	13	2639.65
GSPL	289.85	11	294
HAVELLS	1469.25	5	1509.2
HEIDELBERG	193.74	11	198.1
HEROMOTOCO	3659.2	12	3730.45

* Trends turned Down after a significant period

Daily Trend turned Down

Scrip Name	LCP	Curr Trnd	Reversal
HINDPETRO	358.35	11	361.6
HSCL	434	3	438.7
IBREALEST	110.68	5	113.75
IRCTC	714.1	5	725.2
MAHSEAMLES	699	3	718.4
MGL	1330.9	4	1385.3
NCC	206.85	12	212.4
NMDC	65.02	5	69.45
POLYCAB	5040.75	7	5170.15
PVR	899.95	3	938.2
SAIL	112.6	3	117.05
SHREECEM	30694.5	12	30752.35

* Trends turned Down after a significant period

Gainers - Losers (Nifty 500 Stocks)

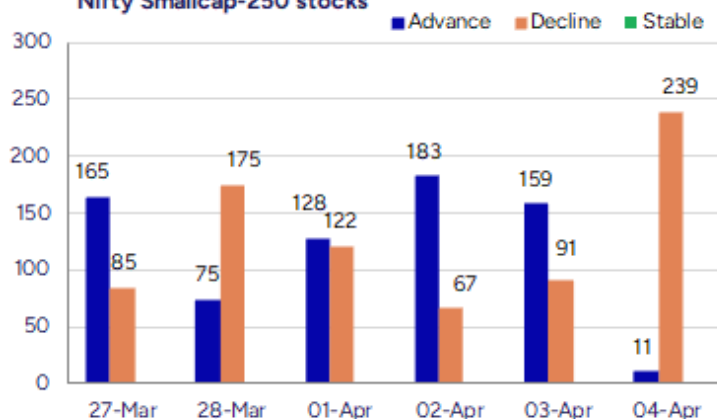
Gainers

Scrip Name	LCP	% Change	Volume
Boss Packaging	54.75	13.83	14000
Bal Pharma	122.23	12.82	2593972
Purple United	168.75	12.13	208000
Durlax Top Surf	53.5	11.46	156000
VIP Clothing	34.54	10.74	9544462
Kaveri Seed	1460.55	10.01	3775849
ACE Integrated	25.24	9.41	110221

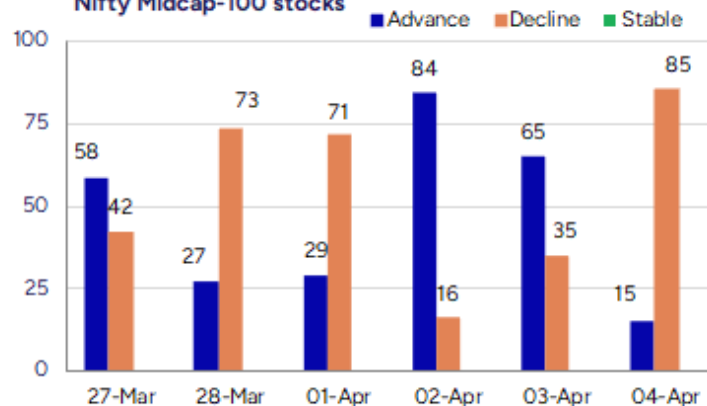
Losers

Scrip Name	LCP	% Change	Volume
Goldiam Inter	307.45	-16.54	3190784
Pearl Global In	1059.2	-16.05	775309
Vimta Labs	924.45	-15.37	432472
Assoc Alcohol	1196.9	-14.37	214189
AARTIPHARM	695.85	-13.77	2186337
Camlin Fine	150.55	-12.4	2389495
Pokarna	837.45	-12.27	1298243

Nifty Smallcap-250 stocks



Nifty Midcap-100 stocks



Nifty Daily chart with RSI indicator



BankNifty Daily chart with RSI indicator

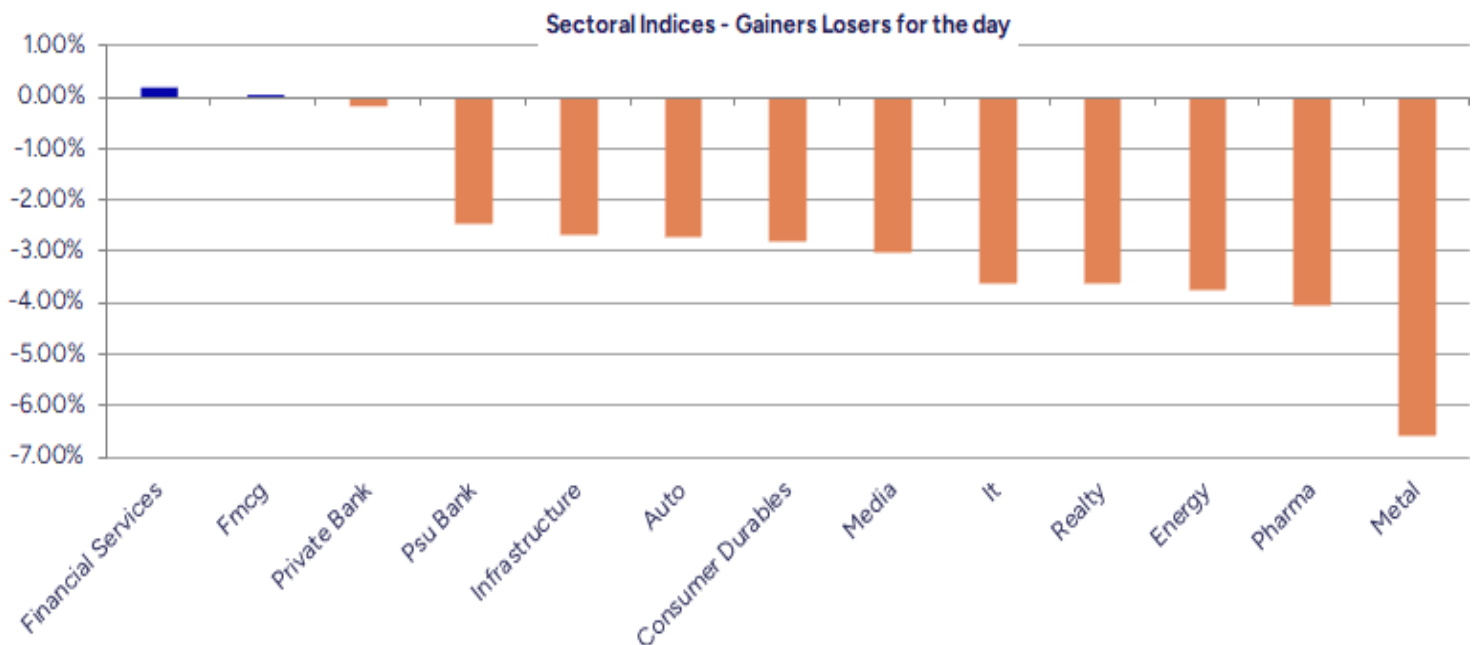


Breakouts - Cross above 200 DMA			
Company Name	LCP	Change %	200 DMA
Bal Pharma	122.23	3.89	117.65
Rainbow Childre	1409.55	1.98	1382.24
Reliable Data S	77.22	0.57	76.78
SMS Lifescience	1212.25	0.50	1206.22
Shankara Buildi	607.55	0.36	605.39
Sundaram Fin	4578.75	0.30	4565.13
Sudarshan Chem	1003.35	0.12	1002.15

Breakdown - Cross below 200 DMA			
Company Name	LCP	Change %	200 DMA
Goldiam Inter	307.45	-10.42	343.22
Tata Steel	140.39	-6.46	150.09
Pearl Global In	1059.2	-6.03	1127.13
Epigral	1765	-5.64	1870.55
V R Infraspac	232.7	-5.61	246.54
Himatsingka Sei	148.52	-5.14	156.57
Balu Forge Indu	608.45	-4.79	639.08
Ganesh Housing	1020.65	-4.41	1067.76
Lupin	1971.05	-4.31	2059.86
Greaves Cotton	194.44	-3.82	202.17
BLS Internation	385.05	-3.75	400.05
Alivus Life	1001.05	-3.64	1038.83
KDDL	2828.65	-3.55	2932.75
ASK Auto	413.9	-3.53	429.06
Sundaram-Clayto	2099.95	-3.36	2172.89
SIL Invest	578.15	-3.35	598.19
Xpro India	1155.25	-3.29	1194.58
Ipca Labs	1399.25	-3.25	1446.3

* Stocks crossing above its Simple Moving Average (200DMA)

* Stocks crossing below its Simple Moving Average (200DMA)



Stocks witnessing a volume surge as compared to their 5 day average volur

Watch out for the stocks that have seen a huge spurt in its share price over the last three days

Volume Shockers - NSE

Company name	LCP	% Chg	Volume	Avg Vol *	% Chg
VIP Clothing	33.8	8.37	9488432	200010	4644
BEW Engineering	169	1.2	41000	1125	3544
Kaveri Seed	1454	9.51	3765592	161194	2236
Rainbow Childre	1405	2.28	1903137	86259	2106
Atal	15.38	4.7	2138302	100889	2019
TECHLABS	596	-1.09	425375	20600	1965
Oneclick Logi.	157.5	4.44	87600	4320	1928
Dr Reddys Labs	1111.2	-3.5	5411956	296967	1722
Avonmore Cap	20.66	4.98	1588960	100846	1476
Punjab & Sind	28.27	-6.24	15676337	1138710	1277
TARC	148.87	4.46	5139252	377303	1262
Tejas Networks	851.7	-2.81	5820169	434698	1239
Donear Ind	119.97	0.03	648308	52105	1144
Jai Balaji Ind	133.7	-4.46	656452	54390	1107
Balaxi Pharma	66.57	-2.1	428304	38449	1014
HEG	474	-4.89	860048	80062	974
Jindal Drilling	818.05	-4.64	368097	34855	956
Aurobindo Pharm	1103.7	-6.18	7140425	719451	892
Krishna Institu	594.85	-1.72	580760	59456	877
Jash Engineerin	611.1	-3.69	260086	26774	871

* the Average Volume of last 5 days

Price Shockers - NSE

Company name	LCP	3 days *	% Chg	Volume
Bal Pharma	122.23	89.84	36.05	2593972
Durlax Top Surf	53.5	40.4	32.43	156000
Aarey Drugs	47.67	36.86	29.33	409120
Vital Chemtech	69.9	56	24.82	30000
V R Infraspac	232.7	190.65	22.06	2000
Valiant Organic	357.85	295.65	21.04	440207
Gujarat Apollo	372.1	308.15	20.75	123690
Aristo Bio-Tech	146	121	20.66	57600
Nacl Industries	134.89	111.95	20.49	4847308
Kaveri Seed	1460.55	1219.95	19.72	3775849
Mangalam Alloys	32.7	27.5	18.91	32000
Hester Bio	1769.2	1488.95	18.82	46857
Vardhman Text	470.75	398.25	18.2	5092285
Purple United	168.75	143.35	17.72	208000
ORIENTAL AROMAT	335.75	285.6	17.56	167898
Sanginita Chemi	12.11	10.34	17.12	305859
Emkay Taps	448.95	384	16.91	6900
Paramount Speci	50.95	43.9	16.06	18000
Rossell India	71.04	61.36	15.78	214184
Hercules Hoists	174.57	150.81	15.75	134447

* the % price rise of the last 3 days

Nifty 50 stocks - Summary Details

Symbol	LTP	Chng	% Chng	Volume (lacs)	Turnover (crs.)	52w High	Diff with 52w H	52w Low	Diff with 52w L	365 days % chng	30 days % chng
NIFTY 50	22904.45	-345.65	-1.49%	4667.42	33760.42	26277.35	12.84%	21281.45	7.63%	5.29%	3.63%
ADANIENT	2336.30	-74.50	-3.09%	12.20	285.92	3743.90	37.60%	2025.00	15.37%	12.40%	-25.44%
ADANIPTS	1152.00	-47.90	-3.99%	17.85	207.49	1621.40	28.95%	995.65	15.70%	13.42%	-14.12%
APOLLOHOSP	6735.00	63.65	0.95%	2.80	186.65	7545.35	10.74%	5693.20	18.30%	7.81%	4.65%
ASIANPAINT	2352.50	3.10	0.13%	11.62	271.68	3394.90	30.70%	2124.75	10.72%	10.19%	-18.12%
AXISBANK	1090.10	0.25	0.02%	60.60	660.14	1339.65	18.63%	933.50	16.78%	8.79%	2.50%
BAJAJ-AUTO	7699.80	-212.40	-2.68%	4.61	355.78	12774.00	39.72%	7301.00	5.46%	7.89%	-12.87%
BAJAJFINSV	1911.85	-8.60	-0.45%	21.21	406.26	2029.90	5.82%	1419.05	34.73%	7.27%	17.08%
BAJFINANCE	8739.90	145.30	1.69%	18.50	1611.02	9260.05	5.62%	6375.70	37.08%	0.10%	17.59%
BEL	280.50	-7.00	-2.43%	196.98	555.56	340.50	17.62%	218.25	28.52%	8.61%	29.80%
BHARTIARTL	1740.50	-5.50	-0.32%	78.17	1370.46	1779.00	2.16%	1183.10	47.11%	10.83%	42.45%
CIPLA	1416.60	-79.10	-5.29%	27.68	392.39	1702.05	16.77%	1317.25	7.54%	6.70%	1.64%
COALINDIA	385.50	-11.55	-2.91%	67.18	259.63	543.55	29.08%	349.25	10.38%	9.12%	-10.88%
DRREDDY	1114.00	-37.45	-3.25%	54.24	598.67	1421.49	21.63%	1076.20	3.51%	2.79%	-81.20%
EICHERMOT	5240.25	-138.90	-2.58%	2.62	138.38	5575.50	6.01%	3886.10	34.85%	11.71%	36.73%
GRASIM	2623.75	-28.15	-1.06%	2.91	76.38	2877.75	8.83%	2171.60	20.82%	10.74%	15.03%
HCLTECH	1427.00	-43.10	-2.93%	44.21	633.86	2012.20	29.08%	1235.00	15.55%	-4.26%	-4.28%
HDFCBANK	1816.80	21.95	1.22%	167.69	3059.10	1880.00	3.36%	1426.80	27.33%	4.96%	21.09%
HDFCLIFE	685.90	-7.00	-1.01%	38.67	266.81	761.20	9.89%	511.40	34.12%	12.39%	11.02%
HEROMOTOCO	3662.45	-90.90	-2.42%	3.30	121.17	6246.25	41.37%	3461.60	5.80%	6.79%	-17.64%
HINDALCO	600.00	-52.65	-8.07%	93.94	574.45	772.65	22.35%	557.60	7.60%	1.71%	13.19%
HINDUNILVR	2243.35	-1.20	-0.05%	11.20	251.50	3035.00	26.08%	2136.00	5.03%	4.04%	-0.91%
ICICIBANK	1335.00	5.45	0.41%	86.48	1151.63	1373.00	2.77%	1048.10	27.37%	9.84%	23.43%
INDUSINDBK	684.70	-24.70	-3.48%	96.27	660.07	1576.35	56.56%	606.00	12.99%	-28.17%	-54.01%
INFY	1456.10	-40.40	-2.70%	95.90	1398.84	2006.45	27.43%	1358.35	7.20%	-11.36%	1.07%
ITC	409.30	-0.10	-0.02%	186.25	762.58	528.50	22.55%	391.20	4.63%	3.68%	-3.72%
JIOFIN	222.55	-7.86	-3.41%	208.29	466.41	394.70	43.62%	198.65	12.03%	11.64%	-35.48%
JSWSTEEL	1008.35	-35.70	-3.42%	38.19	385.31	1074.90	6.19%	823.80	22.40%	7.18%	20.14%
KOTAKBANK	2132.10	-0.50	-0.02%	37.88	806.82	2202.50	3.20%	1543.85	38.10%	11.78%	23.19%
LT	3259.00	-161.15	-4.71%	23.67	775.29	3963.50	17.77%	3141.00	3.76%	6.45%	-9.58%
M&M	2601.40	-10.05	-0.38%	35.98	935.06	3270.95	20.47%	1956.20	32.98%	-0.07%	31.27%
MARUTI	11482.00	-206.10	-1.76%	3.56	406.56	13680.00	16.07%	10725.00	7.06%	0.62%	-5.95%
NESTLEIND	2258.55	12.90	0.57%	5.92	133.63	2778.00	18.70%	2110.00	7.04%	4.62%	-12.07%
NTPC	350.85	-8.05	-2.24%	108.73	383.30	448.45	21.76%	292.80	19.83%	14.39%	2.18%
ONGC	226.10	-17.21	-7.07%	383.34	874.41	345.00	34.46%	215.48	4.93%	7.30%	-11.64%
POWERGRID	294.30	-4.80	-1.60%	210.19	623.43	366.25	19.65%	247.30	19.01%	17.76%	6.78%
RELIANCE	1205.90	-42.80	-3.43%	179.08	2160.86	1608.80	25.04%	1156.00	4.32%	7.47%	-57.57%
SBILIFE	1512.05	-30.20	-1.96%	8.27	125.27	1936.00	21.90%	1307.70	15.63%	10.71%	5.58%
SBIN	769.00	-10.20	-1.31%	82.31	636.94	912.00	15.68%	680.00	13.09%	8.82%	1.06%
SHRIRAMFIN	652.70	-1.45	-0.22%	51.91	340.50	730.45	10.64%	438.60	48.81%	3.36%	-74.41%
SUNPHARMA	1705.00	-65.00	-3.67%	53.45	910.66	1960.35	13.03%	1377.20	23.80%	12.99%	9.27%
TATACONSUM	1088.00	17.00	1.59%	40.89	444.65	1250.10	12.97%	882.90	23.23%	12.20%	-4.33%
TATAMOTORS	615.10	-38.85	-5.94%	266.21	1650.37	1179.00	47.83%	606.30	1.45%	5.61%	-35.20%
TATASTEEL	140.67	-12.95	-8.43%	808.30	1158.70	184.60	23.80%	122.62	14.72%	10.25%	-6.13%
TCS	3304.85	-98.30	-2.89%	53.17	1764.26	4592.25	28.03%	3295.50	0.28%	-3.65%	-13.79%
TECHM	1322.00	-47.35	-3.46%	17.57	233.52	1807.70	26.87%	1162.95	13.68%	-7.99%	9.10%
TITAN	3078.00	-49.55	-1.58%	9.02	278.03	3867.00	20.40%	2971.15	3.60%	2.59%	-15.76%
TRENT	5567.90	-107.40	-1.89%	6.81	380.59	8345.00	33.28%	3843.00	44.88%	13.51%	44.67%
ULTRACEMCO	11500.00	-106.60	-0.92%	2.22	255.36	12145.35	5.31%	9250.00	24.32%	11.92%	16.04%
WIPRO	246.95	-9.40	-3.67%	146.39	362.40	324.60	23.92%	208.50	18.44%	-8.45%	-46.95%
ZOMATO	210.46	-0.44	-0.21%	482.94	1011.66	304.70	30.93%	146.30	43.86%	-7.34%	18.28%

Disclaimer / Disclosures

ANALYST CERTIFICATION

I, Mrs. Vaishali Parekh B.com, Research Analyst, author and the name subscribed to this report, hereby certify that all of the views expressed in this research report accurately reflect our views about the subject issuer(s) or securities. We also certify that no part of our compensation was, is, or will be directly or indirectly related to the specific recommendation(s) or view(s) in this report.

Terms & conditions and other disclosures:

Prabhudas Lilladher Pvt. Ltd, Mumbai, India (hereinafter referred to as "PL") is engaged in the business of Stock Broking, Portfolio Manager, Depository Participant and distribution for third party financial products. PL is a subsidiary of Prabhudas Lilladher Advisory Services Pvt Ltd. which has its various subsidiaries engaged in business of commodity broking, investment banking, financial services (margin funding) and distribution of third party financial/other products, details in respect of which are available at www.plindia.com

This document has been prepared by the Research Division of PL and is meant for use by the recipient only as information and is not for circulation. This document is not to be reported or copied or made available to others without prior permission of PL. It should not be considered or taken as an offer to sell or a solicitation to buy or sell any security.

The information contained in this report has been obtained from sources that are considered to be reliable. However, PL has not independently verified the accuracy or completeness of the same. Neither PL nor any of its affiliates, its directors or its employees accepts any responsibility of whatsoever nature for the information, statements and opinion given, made available or expressed herein or for any omission therein.

Recipients of this report should be aware that past performance is not necessarily a guide to future performance and value of investments can go down as well. The suitability or otherwise of any investments will depend upon the recipient's particular circumstances and, in case of doubt, advice should be sought from an independent expert/advisor.

Either PL or its affiliates or its directors or its employees or its representatives or its clients or their relatives may have position(s), make market, act as principal or engage in transactions of securities of companies referred to in this report and they may have used the research material prior to publication.

PL may from time to time solicit or perform investment banking or other services for any company mentioned in this document.

PL is registered as Research Analyst under Securities and Exchange Board of India (Research Analysts) Regulations, 2014 PL submits that no material disciplinary action has been taken on us by any Regulatory Authority impacting Equity Research Analysis activities.

PL or its research analysts or its associates or his relatives do not have any financial interest in the subject company.

PL or its research analysts or its associates or his relatives do not have actual/beneficial ownership of one per cent or more securities of the subject company at the end of the month immediately preceding the date of publication of the research report.

PL or its research analysts or its associates or his relatives do not have any material conflict of interest at the time of publication of the research report.

PL or its associates might have received compensation from the subject company in the past twelve months.

PL or its associates might have managed or co-managed public offering of securities for the subject company in the past twelve months or mandated by the subject company for any other assignment in the past twelve months.

PL or its associates might have received any compensation for investment banking or merchant banking or brokerage services from the subject company in the past twelve months.

PL or its associates might have received any compensation for products or services other than investment banking or merchant banking or brokerage services from the subject company in the past twelve months PL or its associates might have received any compensation or other benefits from the subject company or third party in connection with the research report.

PL encourages independence in research report preparation and strives to minimize conflict in preparation of research report. PL or its analysts did not receive any compensation or other benefits from the subject Company or third party in connection with the preparation of the research report. PL or its Research Analysts do not have any material conflict of interest at the time of publication of this report.

It is confirmed that Mrs.Vaishali Parekh B.com, Research Analyst of this report has not received any compensation from the companies mentioned in the report in the preceding twelve months compensation of our Research Analysts is not based on any specific merchant banking, investment banking or brokerage service transactions.

The Research analysts for this report certifies that all of the views expressed in this report accurately reflect his or her personal views about the subject company or companies and its or their securities, and no part of his or her compensation was, is or will be, directly or indirectly related to specific recommendations or views expressed in this report.

The research analysts for this report has not served as an officer, director or employee of the subject company PL or its research analysts have not engaged in market making activity for the subject company

Our sales people, traders, and other professionals or affiliates may provide oral or written market commentary or trading strategies to our clients that reflect opinions that are contrary to the opinions expressed herein, and our proprietary trading and investing businesses may make investment decisions that are inconsistent with the recommendations expressed herein. In reviewing these materials, you should be aware that any or all of the foregoing, among other things, may give rise to real or potential conflicts of interest.

PL and its associates, their directors and employees may (a) from time to time, have a long or short position in, and buy or sell the securities of the subject company or (b) be engaged in any other transaction involving such securities and earn brokerage or other compensation or act as a market maker in the financial instruments of the subject company or act as an advisor or lender/borrower to the subject company or may have any other potential conflict of interests with respect to any recommendation and other related information and opinions.