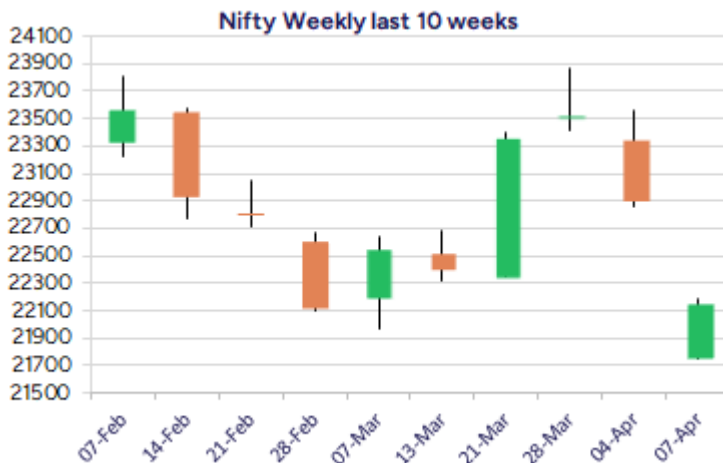
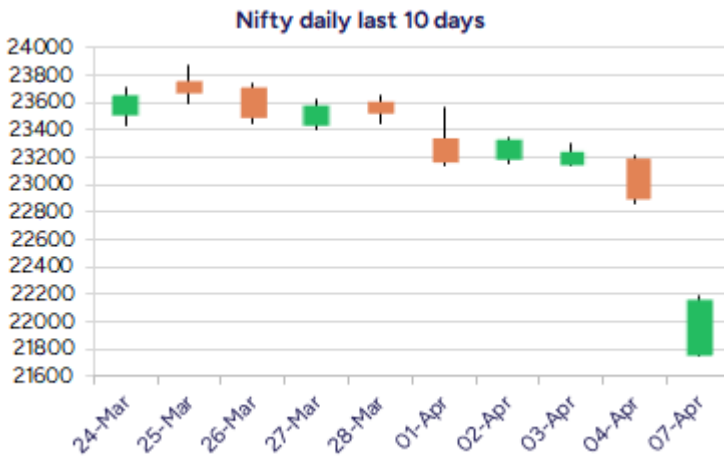


* Sensex 73137.90 -2226.79

* Nifty 22161.60 -742.85

* Bank Nifty 49860.10 -1642.60



*Blue candle → Close rate > Open rate * Red candle → Close rate < Open rate

Market Preview

Nifty crashes below 22200 zone

Nifty witnessed blood bath breaching below the 22000 zone during the intraday session with stocks heavily shedding their gains. BankNifty tanked below the 50000 zone with the bears taking control of the bulls with trend turning weak once again. The market breadth was very weak with the advance decline indicating a ratio of 1:5 at close.

Market Forecast

Nifty daily range 21900-22300

Nifty, with a huge gap down below 22000 zone, demoralised the sentiments and with the bears taking charge, the overall bias has turned bearish with downside targets of 21400 and 21100 levels wide open for the coming sessions. The index would need to stage a significant pullback to move past the 22800 zone, in order to restore the conviction and clarity for further upward movement.

BankNifty, tanked in the opening session below 49500 zone and with weak bias ended near 49900 levels awaiting the RBI policy outcome in a couple of days. The index would have the crucial and important support near 47900 level and on the upside need to cross the important 200 period MA at 51000 level to regain the bias and anticipate for further rise thereafter. One can stay cautious as of now and wait for the things to settle down and establish some clarity and conviction.

The support for the day is seen at 21900 levels while the resistance is seen at 22300 levels. BankNifty would have the daily range of 49000-50700 levels.

Indices	Period	Closing	% Chng	Trend	Reversal	2 Sup	1 Sup	Pivot	1 Res	2 Res
Nifty	Daily	22161.60	-3.24%	-6	23268.45	21585	21874	22032	22320	22478
	Weekly	22904.45	-2.61%	3	22573.75	22489	22697	23130	23338	23771
	Monthly	23519.35	0.05%	-6	25020.35	21213	22366	23118	24271	25022
Bank Nifty	Daily	49860.10	-3.19%	-5	52312.15	48545	49203	49814	50472	51084
	Weekly	51502.70	-0.12%	3	49564.75	50240	50871	51380	52011	52519
	Monthly	51564.85	3.99%	-6	52195.95	46118	48841	50451	53175	54785
Sensex	Daily	73137.90	-2.95%	-6	76272.70	70847	71992	72571	73716	74295
	Weekly	75364.89	-2.65%	3	74441.40	74051	74708	76095	76752	78140
	Monthly	77414.92	-0.11%	-6	82130.50	70156	73785	76263	79893	82371

Daily Trend turned Down			
Scrip Name	LCP	Curr Trnd	Reversal
ADANIPOWER	509.95	2	518.65
ARVIND	317.9	3	323.05
ASIANPAINT	2341.35	2	2346.25
ASTRAL	1287.7	12	1317.05
BANDHANBNK	144.96	4	152.6
BANKBARODA	229.36	21	233.85
BSE	5182.45	16	5407.75
CUB	158.18	4	160.9
DCBBANK	113.07	4	115.35
ENGINEERSIN	157.01	4	161.7
IBULHSGFIN	102.67	4	109.95
ICICIGI	1744.4	21	1817.65

* Trends turned Down after a significant period

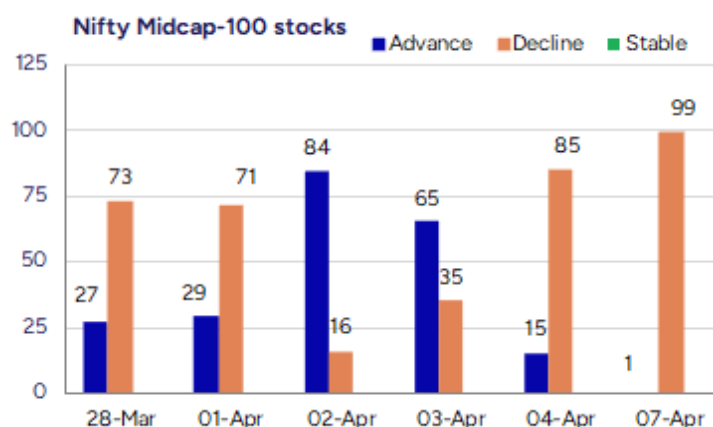
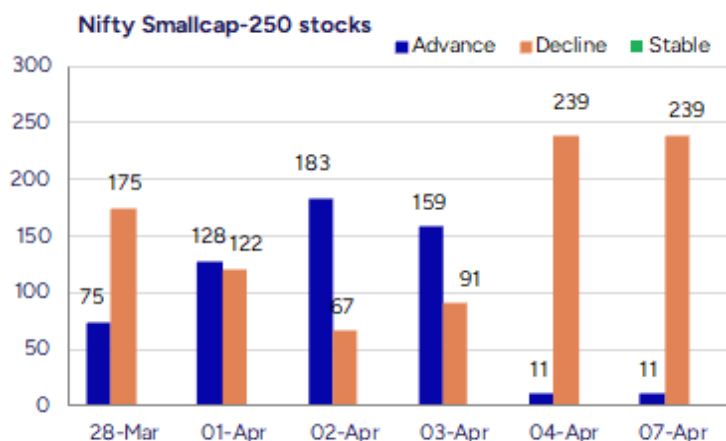
Daily Trend turned Down			
Scrip Name	LCP	Curr Trnd	Reversal
JUBLPHARMA	883.35	6	912.1
KANSAINER	234.97	3	238.55
MCDOWELLCOM	1403.8	6	1418.6
METROPOLIS	1488.6	3	1536.05
RAYMOND	1436.95	2	1447.85
TITAN	3022.2	3	3052.9
TORNTPHARM	3233.55	2	3253.35
TORNTPOWER	1496.7	2	1533.8
TRENT	4740.95	8	5580.7
UBL	1945.6	3	1975.95
VRLLG	475.25	3	483
ZEETELE	97.05	3	102.55

* Trends turned Down after a significant period

Gainers - Losers (Nifty 500 Stocks)

Gainers			
Scrip Name	LCP	% Change	Volume
Chemfab Alkalis	796.5	12.44	82666
Securecloud Tec	22.86	9.96	116096
Shreeoswal Seed	13.79	9.88	360126
Dhanlaxmi Crop	50.9	6.04	8000
Aksh Optifibre	10.08	5.66	3237481
Mangalam World	159.95	5.23	6000
NK Industries	65.76	5.18	1211

Losers			
Scrip Name	LCP	% Change	Volume
Khandwala Sec	20.94	-14.88	73882
Trent	4740.95	-14.77	7644551
Jindal Drilling	691.7	-14.68	922912
Onward Tech	208.25	-14.58	244488
AGI Infra	702.9	-13.89	167059
Carraro India	265.45	-13.87	463379
Themis Medicare	120.32	-13.58	356385



Nifty Daily chart with RSI indicator



BankNifty Daily chart with RSI indicator



Breakouts - Cross above 200 DMA

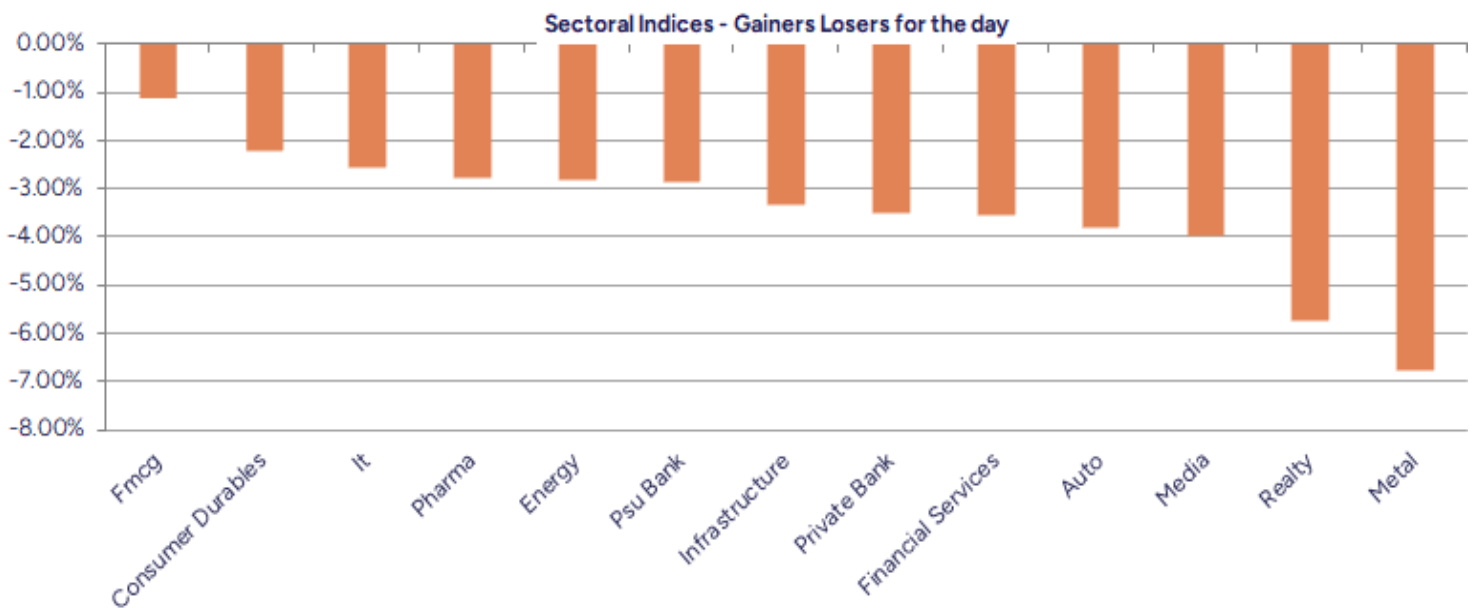
Company Name	LCP	Change %	200 DMA
Richa Info	84	3.51	81.15
ILandFS Engg	37.94	1.80	37.27
Aegis Logistics	794.5	0.63	789.53

Breakdown - Cross below 200 DMA

Company Name	LCP	Change %	200 DMA
Time Techno	358.7	-9.72	397.31
Somi Conveyor	161.38	-8.98	177.31
Godawari Power	180.2	-8.36	196.64
SMS Lifescience	1112.15	-7.95	1208.25
Steel City Secu	93.21	-6.95	100.17
JSW Infra	286.4	-6.81	307.34
Krishna Defence	664.9	-6.73	712.88
Ceat	2662	-6.66	2851.95
Cantabil Retail	242.25	-6.58	259.3
Bal Pharma	110	-6.52	117.67
Unihealth Hospi	133	-6.52	142.27
Thangamayil	1834.85	-6.37	1959.6
Sangam India	375.1	-5.96	398.86
Reliable Data S	72.42	-5.84	76.91
Deep Ind	428.3	-5.71	454.25
D. P. Abhushan	1426.2	-5.61	1511
Sunflag Iron	221.18	-5.39	233.78
DRC Systems	24.87	-5.33	26.27

* Stocks crossing above its Simple Moving Average (200DMA)

* Stocks crossing below its Simple Moving Average (200DMA)



Stocks witnessing a volume surge as compared to their 5 day average volur

Watch out for the stocks that have seen a huge spurt in its share price over the last three days

Volume Shockers - NSE

Company name	LCP	% Chg	Volume	Avg Vol *	% Chg
BEW Engineering	160.5	-5.03	59000	1125	5144
Jindal Drilling	691.7	-14.68	922958	34855	2548
Oneclick Logi.	159.85	1.49	80400	4320	1761
The Western Ind	164.76	-3.43	77895	4459	1647
HEG	455.15	-4.12	1293109	80062	1515
Atal	14.95	-2.54	1586803	100889	1473
Shriram Finance	614	-6.06	15188745	1003099	1414
Delhivery	268.35	3.69	24892348	1749966	1322
Kamat Hotels	243.55	-6.54	689225	48751	1314
Dr Reddys Labs	1087.9	-1.99	3888037	296967	1209
Jash Engineerin	581.8	-4.8	342916	26774	1181
Vilin Bio Med	25.5	-8.11	120000	9600	1150
Anupam	708.2	-7.25	972306	77852	1149
Tejas Networks	796.2	-5.51	4785664	434698	1001
Cineline India	100.9	2.14	255724	23389	993
Precot	388.05	-13	40194	3752	971
Krishna Institu	568.9	-4.22	622991	59456	948
Punjab & Sind	25.55	-8.85	11801457	1138710	936
Exxaro	6.06	-5.61	525013	51457	920
Swaraj Suiting	143.85	-11.29	181500	18000	908

* the Average Volume of last 5 days

Price Shockers - NSE

Company name	LCP	3 days *	% Chg	Volume
Bal Pharma	110	90.29	21.83	206650
Securecloud Tec	22.86	18.93	20.76	116096
Aksh Optifibre	10.08	8.66	16.4	3237481
Purple United	172.9	149.1	15.96	86000
Sadhana Nitro	19.44	16.8	15.71	444284
JHS Svendgaard	14.22	12.31	15.52	476892
Shreeoswal Seed	13.79	11.96	15.3	360126
Mandeep Auto In	22.8	19.8	15.15	42000
Nacl Industries	141.63	123.14	15.02	3607012
ASL Industries	48.95	42.75	14.5	4000
GSM Foils	135.9	120	13.25	38000
Vardhman Text	453.35	402	12.77	1295967
Cineline India	100.9	89.61	12.6	255724
Focus Lighting	96.13	85.72	12.14	876695
Gujarat Apollo	357.7	319.6	11.92	41359
Aarey Drugs	45.28	40.54	11.69	29524
VIP Clothing	33.56	30.07	11.61	1560828
Felix Industrie	180.2	161.6	11.51	120000
Perfect Infra	11.05	9.95	11.06	15000
Norben Tea	43.98	39.9	10.23	0

* the % price rise of the last 3 days

Nifty 50 stocks - Summary Details											
Symbol	LTP	Chng	% Chng	Volume (lacs)	Turnover (crs.)	52w High	Diff with 52w H	52w Low	Diff with 52w L	365 days % chng	30 days % chng
NIFTY 50	22161.60	-742.85	-3.24%	6471.07	49171.82	26277.35	15.66%	21281.45	4.14%	1.56%	1.74%
ADANIEN	2222.90	-111.75	-4.79%	15.67	344.08	3743.90	40.63%	2025.00	9.77%	3.88%	-27.60%
ADANIPTS	1119.00	-29.35	-2.56%	21.93	239.95	1621.40	30.99%	995.65	12.39%	0.34%	-16.52%
APOLLOHOSP	6714.50	-0.05	#VALUE!	7.44	496.00	7545.35	11.01%	5693.20	17.94%	8.02%	4.95%
ASIANPAINT	2344.00	-12.05	-0.51%	17.46	406.63	3394.90	30.96%	2124.75	10.32%	3.79%	-18.29%
AXISBANK	1052.00	-39.30	-3.60%	97.20	1017.30	1339.65	21.47%	933.50	12.69%	5.17%	3.04%
BAJAJ-AUTO	7322.05	-363.05	-4.72%	4.70	341.26	12774.00	42.68%	7089.35	3.28%	1.46%	-14.70%
BAJAJFINSV	1849.70	-62.60	-3.27%	25.94	480.71	2029.90	8.88%	1419.05	30.35%	3.63%	13.97%
BAJFINANCE	8590.10	-128.75	-1.48%	13.98	1181.61	9260.05	7.23%	6375.70	34.73%	3.74%	21.51%
BEL	274.00	-6.00	-2.14%	249.54	670.97	340.50	19.53%	218.25	25.54%	1.09%	24.72%
BHARTIARTL	1693.00	-50.45	-2.89%	148.70	2540.19	1779.00	4.83%	1183.10	43.10%	6.91%	46.39%
CIPLA	1393.40	-21.85	-1.54%	16.05	221.44	1702.05	18.13%	1317.25	5.78%	-2.96%	-2.36%
COALINDIA	378.90	-6.15	-1.60%	102.02	377.74	543.55	30.29%	349.25	8.49%	1.16%	-13.85%
DRREDDY	1092.30	-17.65	-1.59%	38.88	422.58	1421.49	23.16%	1020.00	7.09%	-2.06%	-82.04%
EICHERMOT	5078.40	-169.50	-3.23%	5.19	263.54	5575.50	8.92%	3892.05	30.48%	2.89%	30.18%
GRASIM	2511.60	-105.30	-4.02%	9.74	244.10	2877.75	12.72%	2171.60	15.66%	8.71%	16.95%
HCLTECH	1377.95	-44.15	-3.10%	64.84	869.86	2012.20	31.52%	1235.00	11.57%	-8.72%	-7.97%
HDFCBANK	1760.05	-57.25	-3.15%	189.98	3341.98	1880.00	6.38%	1426.80	23.36%	7.58%	17.28%
HDFCLIFE	667.25	-21.80	-3.16%	38.62	257.73	761.20	12.34%	511.40	30.48%	10.21%	9.48%
HEROMOTOCO	3526.05	-133.15	-3.64%	6.06	210.60	6246.25	43.55%	3344.00	5.44%	0.18%	-19.13%
HINDALCO	564.45	-35.50	-5.92%	131.18	734.25	772.65	26.95%	546.45	3.29%	-13.22%	5.25%
HINDUNILVR	2250.00	5.45	0.24%	34.35	767.53	3035.00	25.86%	2136.00	5.34%	1.81%	-0.99%
ICICIBANK	1294.10	-41.20	-3.09%	191.85	2475.75	1373.00	5.75%	1048.10	23.47%	9.94%	23.25%
INDUSINDBK	678.50	-3.50	-0.51%	93.83	622.56	1576.35	56.96%	606.00	11.96%	-27.20%	-56.07%
INFY	1404.90	-46.75	-3.22%	217.15	2964.61	2006.45	29.98%	1307.00	7.49%	-13.90%	-1.86%
ITC	406.75	-2.95	-0.72%	267.63	1078.57	528.50	23.04%	390.15	4.25%	1.44%	-4.17%
JIOFIN	214.85	-7.47	-3.36%	257.72	542.94	394.70	45.57%	198.65	8.16%	0.23%	-40.43%
JSWSTEEL	930.00	-75.75	-7.53%	45.82	426.67	1074.90	13.48%	823.80	12.89%	-0.53%	17.34%
KOTAKBANK	2044.00	-87.95	-4.13%	71.39	1455.06	2202.50	7.20%	1543.85	32.40%	10.16%	19.43%
LT	3087.00	-173.15	-5.31%	49.54	1509.44	3963.50	22.11%	2965.30	4.10%	0.48%	-12.90%
M&M	2508.00	-88.55	-3.41%	39.37	978.87	3270.95	23.33%	1963.20	27.75%	-4.81%	28.97%
MARUTI	11352.95	-129.05	-1.12%	6.02	676.13	13680.00	17.01%	10725.00	5.86%	-1.56%	-7.56%
NESTLEIND	2255.00	-7.15	-0.32%	7.37	163.71	2778.00	18.83%	2110.00	6.87%	1.06%	-10.86%
NTPC	349.75	-0.65	-0.19%	180.25	618.87	448.45	22.01%	292.80	19.45%	6.33%	-1.17%
ONGC	220.35	-5.66	-2.50%	270.24	580.23	345.00	36.13%	205.00	7.49%	-2.95%	-15.65%
POWERGRID	290.65	-3.25	-1.11%	228.48	661.23	366.25	20.64%	247.30	17.53%	11.62%	5.57%
RELIANCE	1171.25	-33.45	-2.78%	221.56	2549.15	1608.80	27.20%	1114.85	5.06%	-3.61%	-58.75%
SBILIFE	1468.00	-44.60	-2.95%	9.17	133.97	1936.00	24.17%	1307.70	12.26%	7.16%	1.84%
SBIN	749.00	-18.45	-2.40%	149.23	1107.62	912.00	17.87%	680.00	10.15%	4.74%	0.35%
SHRIRAMFIN	619.00	-34.60	-5.29%	151.89	921.67	730.45	15.26%	438.60	41.13%	3.61%	-74.05%
SUNPHARMA	1677.10	-32.25	-1.89%	57.15	948.14	1960.35	14.45%	1377.20	21.78%	6.22%	6.24%
TATACONSUM	1048.00	-39.85	-3.66%	32.01	335.71	1250.10	16.17%	882.90	18.70%	13.08%	-2.48%
TATAMOTORS	581.10	-32.75	-5.34%	494.63	2785.59	1179.00	50.71%	535.75	8.46%	-5.31%	-39.05%
TATASTEEL	130.20	-10.19	-7.26%	1218.06	1554.37	184.60	29.47%	122.62	6.18%	-7.37%	-14.06%
TCS	3285.00	-14.40	-0.44%	66.24	2098.14	4592.25	28.47%	3056.05	7.49%	-8.63%	-17.08%
TECHM	1292.95	-28.00	-2.12%	30.45	382.30	1807.70	28.48%	1162.95	11.18%	-11.49%	4.56%
TITAN	3046.10	-30.10	-0.98%	13.79	413.21	3867.00	21.23%	2925.00	4.14%	-0.10%	-18.07%
TRENT	4745.05	-817.80	-14.70%	76.45	3576.63	8345.00	43.14%	3894.90	21.83%	11.26%	41.45%
ULTRACEMCO	11288.90	-209.75	-1.82%	4.85	538.30	12145.35	7.05%	9250.00	22.04%	8.66%	17.05%
WIPRO	243.15	-3.15	-1.28%	130.12	308.13	324.60	25.09%	208.50	16.62%	-13.52%	-49.22%
ZOMATO	211.00	0.47	0.22%	649.33	1334.18	304.70	30.75%	146.30	44.22%	-2.91%	10.51%

Disclaimer / Disclosures

ANALYST CERTIFICATION

I, Mrs. Vaishali Parekh B.com, Research Analyst, author and the name subscribed to this report, hereby certify that all of the views expressed in this research report accurately reflect our views about the subject issuer(s) or securities. We also certify that no part of our compensation was, is, or will be directly or indirectly related to the specific recommendation(s) or view(s) in this report.

Terms & conditions and other disclosures:

Prabhudas Lilladher Pvt. Ltd, Mumbai, India (hereinafter referred to as "PL") is engaged in the business of Stock Broking, Portfolio Manager, Depository Participant and distribution for third party financial products. PL is a subsidiary of Prabhudas Lilladher Advisory Services Pvt Ltd. which has its various subsidiaries engaged in business of commodity broking, investment banking, financial services (margin funding) and distribution of third party financial/other products, details in respect of which are available at www.plindia.com

This document has been prepared by the Research Division of PL and is meant for use by the recipient only as information and is not for circulation. This document is not to be reported or copied or made available to others without prior permission of PL. It should not be considered or taken as an offer to sell or a solicitation to buy or sell any security.

The information contained in this report has been obtained from sources that are considered to be reliable. However, PL has not independently verified the accuracy or completeness of the same. Neither PL nor any of its affiliates, its directors or its employees accepts any responsibility of whatsoever nature for the information, statements and opinion given, made available or expressed herein or for any omission therein.

Recipients of this report should be aware that past performance is not necessarily a guide to future performance and value of investments can go down as well. The suitability or otherwise of any investments will depend upon the recipient's particular circumstances and, in case of doubt, advice should be sought from an independent expert/advisor.

Either PL or its affiliates or its directors or its employees or its representatives or its clients or their relatives may have position(s), make market, act as principal or engage in transactions of securities of companies referred to in this report and they may have used the research material prior to publication.

PL may from time to time solicit or perform investment banking or other services for any company mentioned in this document.

PL is registered as Research Analyst under Securities and Exchange Board of India (Research Analysts) Regulations, 2014 PL submits that no material disciplinary action has been taken on us by any Regulatory Authority impacting Equity Research Analysis activities.

PL or its research analysts or its associates or his relatives do not have any financial interest in the subject company.

PL or its research analysts or its associates or his relatives do not have actual/beneficial ownership of one per cent or more securities of the subject company at the end of the month immediately preceding the date of publication of the research report.

PL or its research analysts or its associates or his relatives do not have any material conflict of interest at the time of publication of the research report.

PL or its associates might have received compensation from the subject company in the past twelve months.

PL or its associates might have managed or co-managed public offering of securities for the subject company in the past twelve months or mandated by the subject company for any other assignment in the past twelve months.

PL or its associates might have received any compensation for investment banking or merchant banking or brokerage services from the subject company in the past twelve months.

PL or its associates might have received any compensation for products or services other than investment banking or merchant banking or brokerage services from the subject company in the past twelve months PL or its associates might have received any compensation or other benefits from the subject company or third party in connection with the research report.

PL encourages independence in research report preparation and strives to minimize conflict in preparation of research report. PL or its analysts did not receive any compensation or other benefits from the subject Company or third party in connection with the preparation of the research report. PL or its Research Analysts do not have any material conflict of interest at the time of publication of this report.

It is confirmed that Mrs.Vaishali Parekh B.com, Research Analyst of this report has not received any compensation from the companies mentioned in the report in the preceding twelve months compensation of our Research Analysts is not based on any specific merchant banking, investment banking or brokerage service transactions.

The Research analysts for this report certifies that all of the views expressed in this report accurately reflect his or her personal views about the subject company or companies and its or their securities, and no part of his or her compensation was, is or will be, directly or indirectly related to specific recommendations or views expressed in this report.

The research analysts for this report has not served as an officer, director or employee of the subject company PL or its research analysts have not engaged in market making activity for the subject company

Our sales people, traders, and other professionals or affiliates may provide oral or written market commentary or trading strategies to our clients that reflect opinions that are contrary to the opinions expressed herein, and our proprietary trading and investing businesses may make investment decisions that are inconsistent with the recommendations expressed herein. In reviewing these materials, you should be aware that any or all of the foregoing, among other things, may give rise to real or potential conflicts of interest.

PL and its associates, their directors and employees may (a) from time to time, have a long or short position in, and buy or sell the securities of the subject company or (b) be engaged in any other transaction involving such securities and earn brokerage or other compensation or act as a market maker in the financial instruments of the subject company or act as an advisor or lender/borrower to the subject company or may have any other potential conflict of interests with respect to any recommendation and other related information and opinions.