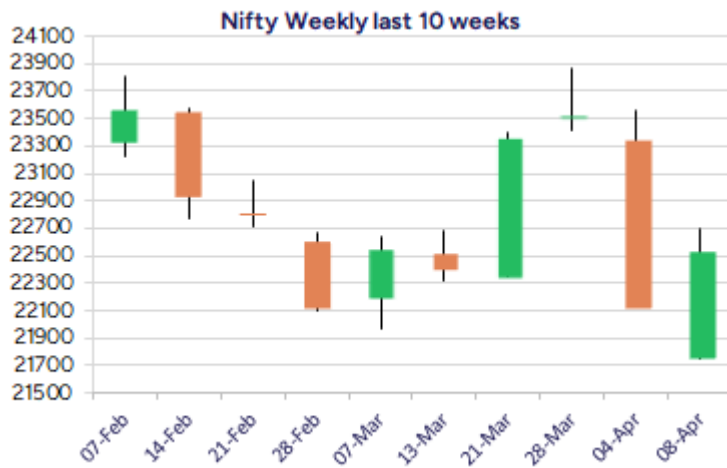
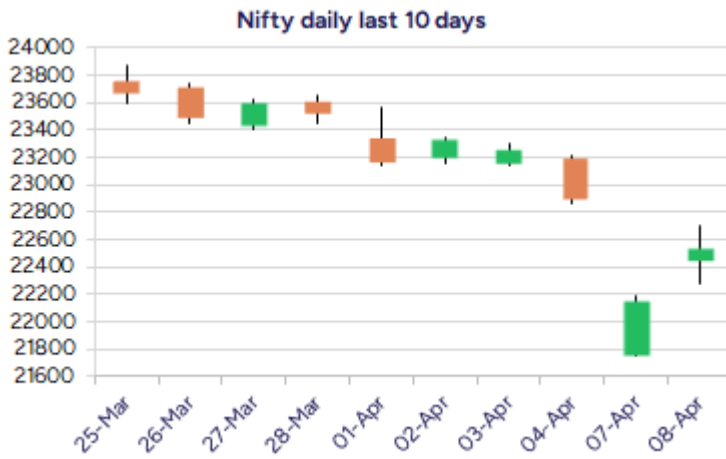


\* Sensex 74227.08 + 1089.18

\* Nifty 22535.85 + 374.25

\* Bank Nifty 50511.00 + 650.90



\*Blue candle → Close rate > Open rate \* Red candle → Close rate < Open rate

## Market Preview

### Nifty ends above 22500 zone

Nifty witnessed pullback to close above the 22500 zone which was important to slightly restore the bias as of now. BankNifty recovered to some extent to close above the 50500 level with the RBI policy outcome to be released during the session expecting fluctuations. The market breadth was strong with the advance decline indicating a ratio of 7:1 at close.

## Market Forecast

### Nifty daily range 22350-22800

Nifty, after scaling a low of 21750 zone in the previous session, the index witnessed a significant pullback to end above the 22500 zone with sentiment eased out to some extent and a decisive breach above the 22850 zone would be required to fill up the gap and thereafter, to improve the bias. The index would have the near-term support of 22300 which needs to be sustained and expect for further improvement in the coming sessions.

BankNifty, witnessing a recovery moved past the 100 period MA at 50300 to improve the bias to some extent and would be awaiting the RBI policy outcome which would decide the further directional move of the index. The index would have the tough resistance zone near the 52000 level while on the downside, the 49200 zone shall be positioned as the crucial support level which needs to be sustained.

The support for the day is seen at 22350 levels while the resistance is seen at 22800 levels. BankNifty would have the daily range of 49900-51300 levels.

Indices	Period	Closing	% Chng	Trend	Reversal	2 Sup	1 Sup	Pivot	1 Res	2 Res
Nifty	Daily	22535.85	1.69%	-7	22973.85	22075	22305	22501	22732	22928
	Weekly	22904.45	-2.61%	3	22573.75	22489	22697	23130	23338	23771
	Monthly	23519.35	0.05%	-6	25020.35	21213	22366	23118	24271	25022
Bank Nifty	Daily	50511.00	1.31%	-6	51700.35	49682	50097	50445	50860	51208
	Weekly	51502.70	-0.12%	3	49564.75	50240	50871	51380	52011	52519
	Monthly	51564.85	3.99%	-6	52195.95	46118	48841	50451	53175	54785
Sensex	Daily	74227.08	1.49%	-7	75431.50	72736	73482	74170	74916	75605
	Weekly	75364.89	-2.65%	3	74441.40	74051	74708	76095	76752	78140
	Monthly	77414.92	-0.11%	-6	82130.50	70156	73785	76263	79893	82371

## Daily Trend turned Up

Scrip Name	LCP	Curr Trnd	Reversal
ASIANPAINT	2394.2	-1	2347.3
BAJFINANCE	8822.25	-8	8773.8
BATAIN	1211.85	-2	1205.55
BIRLACORPN	1132.9	-2	1110.6
CIPLA	1432.55	-2	1429
DIXON	12991.8	-2	12943.05
ENGINEERSIN	164.05	-1	161.4
GODREJCP	1197.25	-2	1163.3
HINDPETRO	369.15	-2	363.5
HUDCO	207.01	-2	206.6
ICIL	273.8	-2	259.9
ITC	412.55	-1	408.2

\* Trends turned Up after a significant period

## Daily Trend turned Up

Scrip Name	LCP	Curr Trnd	Reversal
JUBLFOOD	681.95	-2	681.5
LUPINLTD	1982.65	-2	1982.05
MARUTI	11458.9	-2	11452.05
NBCC	83.07	-2	82.3
ORACLEFIN	7545.95	-3	7488.05
PIDILITIND	2930.95	-1	2879.85
REPCOHOME	342.95	-2	341.5
SRTRANSFIN	641.45	-6	637.2
SUNTV	652.8	-6	650.25
TITAN	3122.3	-1	3046.45
UBL	1996.5	-1	1977.65
ZEETELE	107.93	-1	101.7

\* Trends turned Up after a significant period

## Gainers - Losers ( Nifty 500 Stocks )

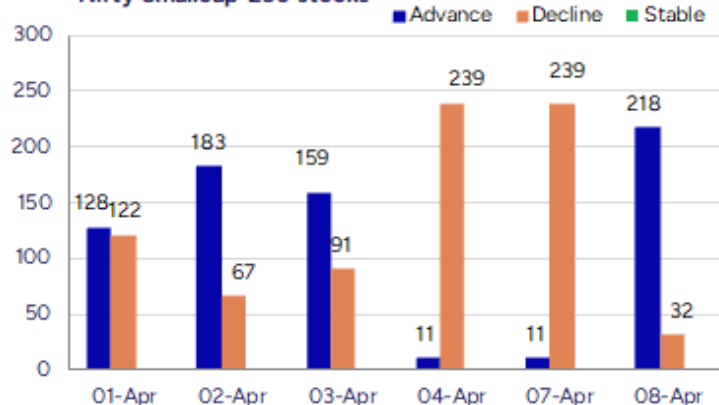
## Gainers

Scrip Name	LCP	% Change	Volume
Cura Tech	39.94	2	2
Silly Monks Ent	17.88	20	332530
Keynote Finance	365	19.99	130709
Binani Ind	12.07	19.98	154365
Innomet Advance	128.2	19.98	86400
One Point One S	50.19	19.81	9011919
Sarthak Metals	126.34	14.99	922478

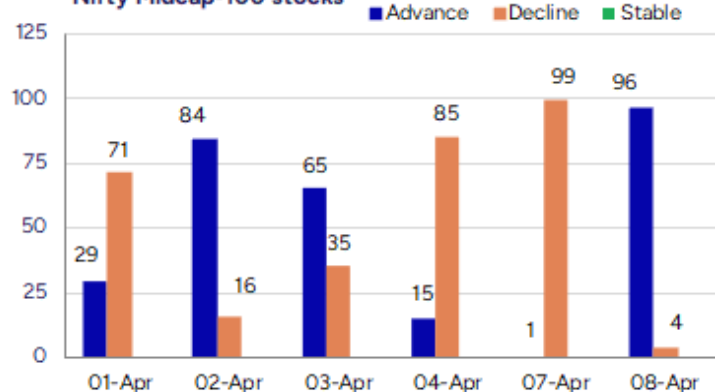
## Losers

Scrip Name	LCP	% Change	Volume
Divine Hira Jew	48.6	-10	8000
Amiable	73.8	-7.69	1600
Upsurge Seeds	133.9	-7.66	600
D.K. Enterprise	64.35	-7.34	6000
Delhivery	248.9	-7.25	24051537
Precot	360.25	-7.16	249024
The Western Ind	153.37	-6.91	16897

## Nifty Smallcap-250 stocks



## Nifty Midcap-100 stocks



### Nifty Daily chart with RSI indicator



### BankNifty Daily chart with RSI indicator



**Breakouts - Cross above 200 DMA**

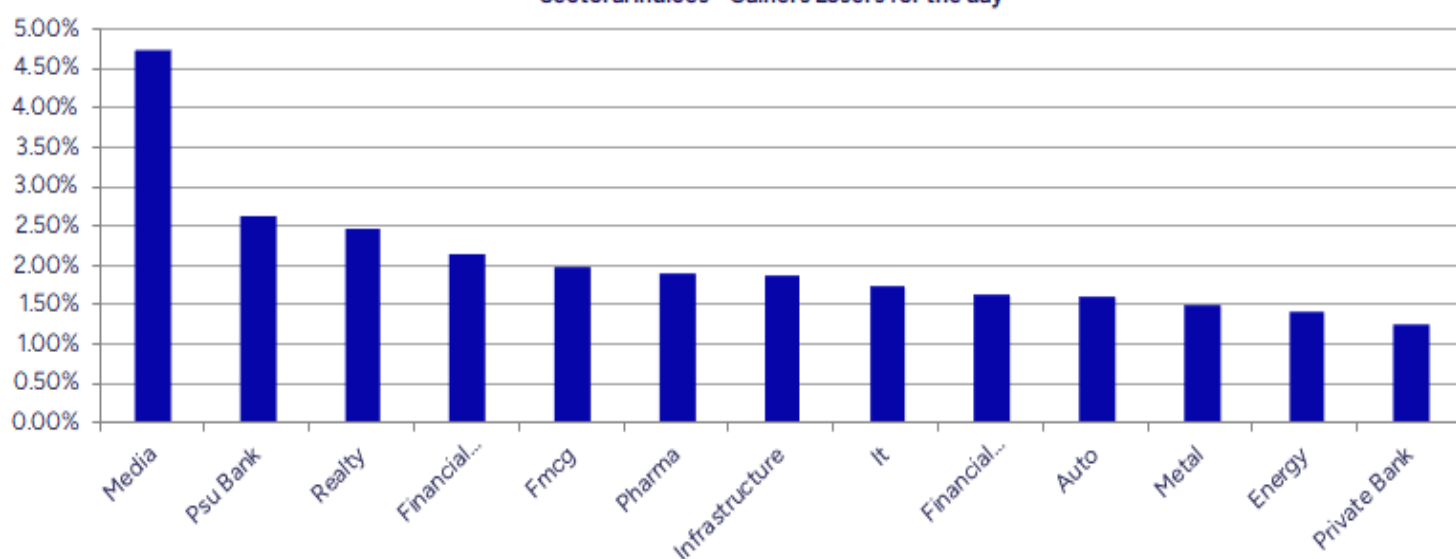
Company Name	LCP	Change %	200 DMA
Chola Fin Hold	1718.45	6.40	1615.07
PC Jeweller	13.77	5.52	13.05
Deep Ind	478.45	5.17	454.94
Zenith Drugs	93.75	4.89	89.38
Vijaya Diagnost	1016.1	4.67	970.73
Authum Invest	1642.4	4.66	1569.31
Pil Italica	14.43	4.49	13.81
Valiant Organic	368.9	4.26	353.82
Berger Paints	535.55	3.45	517.68
Lemon Tree Hote	138.64	3.25	134.28
Eris Life	1320.75	3.00	1282.23
Sundaram Fin	4689.9	2.75	4564.21
Apollo Micro Sy	113.37	2.74	110.35
SPIC	82.91	2.61	80.8
Medicamen Bio	493.2	2.43	481.48
Chaman Lal Seti	305.2	2.35	298.18
Krishana Phosch	235.18	2.28	229.94
Medplus Health	737.55	226.00%	721.23

\* Stocks crossing above its Simple Moving Average (200DMA)

**Breakdown - Cross below 200 DMA**

Company Name	LCP	Change %	200 DMA
Gillanders Arbu	99.24	-1.97	101.23
Sky Gold	306.8	-1.41	311.2
Aegis Logistics	778.35	-1.41	789.48
Embassy Office	368.42	-1.38	373.57
Nitiraj Enginee	250.05	-1.13	252.9
Balrampur Chini	527	-0.36	528.91

\* Stocks crossing below its Simple Moving Average (200DMA)

**Sectoral Indices - Gainers Losers for the day**


Stocks witnessing a volume surge as compared to their 5 day average volume

Watch out for the stocks that have seen a huge spurt in its share price over the last three days

Volume Shockers - NSE					
Company name	LCP	% Chg	Volume	Avg Vol *	% Chg
Precot	360.25	-7.16	249024	3752	6538
Oneclick Logi.	161.6	1.09	261600	4320	5956
Vijaya Diagnost	1016.1	13.94	13420191	222272	5938
Sarthak Metals	126.34	14.99	922478	28574	3128
Atal	15.59	4.28	2162978	100889	2044
Five-Star Busin	713.25	6.69	6192173	295334	1997
Mahickra Chemic	107	1.37	39000	1950	1900
Transformers	494	4.89	2383051	131705	1709
Sky Gold	306.8	-1.43	444152	25989	1609
Keynote Finance	365	19.99	130709	8326	1470
Delhivery	248.9	-7.25	24051537	1749966	1274
Siemens	2763.45	-1.74	2603712	205570	1167
Rainbow Childre	1479.65	5.26	1061755	86259	1131
Jindal Drilling	707.7	2.31	415342	34855	1092
Jindal Worldwid	68.62	3.83	1586131	138074	1049
Maks Energy	27.6	4.94	63000	5700	1005
BEW Engineering	163.35	1.78	12000	1125	967
Jai Balaji Ind	126.32	1.37	568249	54390	945
Shriram Finance	641.45	4.47	10414867	1003099	938
Medicamen Bio	493.2	7.65	98514	9625	923

\* the Average Volume of last 5 days

Price Shockers - NSE					
Company name	LCP	3 days *	% Chg	Volume	
Securecloud Tec	25.14	20.79	20.92	66476	
Shreeoswal Seed	15.05	12.55	19.92	211691	
Silly Monks Ent	17.88	14.97	19.44	332530	
Innomet Advance	128.2	114	12.46	86400	
Keynote Finance	365	325.5	12.14	130709	
S Chand and Co	192.66	172.11	11.94	863074	
Binani Ind	12.07	10.8	11.76	154365	
One Point One S	50.19	45.16	11.14	9011919	
Nacl Industries	148.71	134.89	10.25	233961	

\* the % price rise of the last 3 days



Nifty 50 stocks - Summary Details											
Symbol	LTP	Chng	% Chng	Volume (lacs)	Turnover (crs.)	52w High	Diff with 52w H	52w Low	Diff with 52w L	365 days % chng	30 days % chng
NIFTY 50	22161.60	-742.85	-3.24%	6471.07	49171.82	26277.35	15.66%	21281.45	4.14%	1.56%	1.74%
ADANIANT	2222.90	-111.75	-4.79%	15.67	344.08	3743.90	40.63%	2025.00	9.77%	3.88%	-27.60%
ADANIPTS	1119.00	-29.35	-2.56%	21.93	239.95	1621.40	30.99%	995.65	12.39%	0.34%	-16.52%
APOLLOHOSP	6714.50	-0.05	#VALUE!	7.44	496.00	7545.35	11.01%	5693.20	17.94%	8.02%	4.95%
ASIANPAINT	2344.00	-12.05	-0.51%	17.46	406.63	3394.90	30.96%	2124.75	10.32%	3.79%	-18.29%
AXISBANK	1052.00	-39.30	-3.60%	97.20	1017.30	1339.65	21.47%	933.50	12.69%	5.17%	3.04%
BAJAJ-AUTO	7322.05	-363.05	-4.72%	4.70	341.26	12774.00	42.68%	7089.35	3.28%	1.46%	-14.70%
BAJAJFINSV	1849.70	-62.60	-3.27%	25.94	480.71	2029.90	8.88%	1419.05	30.35%	3.63%	13.97%
BAJFINANCE	8590.10	-128.75	-1.48%	13.98	1181.61	9260.05	7.23%	6375.70	34.73%	3.74%	21.51%
BEL	274.00	-6.00	-2.14%	249.54	670.97	340.50	19.53%	218.25	25.54%	1.09%	24.72%
BHARTIARTL	1693.00	-50.45	-2.89%	148.70	2540.19	1779.00	4.83%	1183.10	43.10%	6.91%	46.39%
CIPLA	1393.40	-21.85	-1.54%	16.05	221.44	1702.05	18.13%	1317.25	5.78%	-2.96%	-2.36%
COALINDIA	378.90	-6.15	-1.60%	102.02	377.74	543.55	30.29%	349.25	8.49%	1.16%	-13.85%
DRREDDY	1092.30	-17.65	-1.59%	38.88	422.58	1421.49	23.16%	1020.00	7.09%	-2.06%	-82.04%
EICHERMOT	5078.40	-169.50	-3.23%	5.19	263.54	5575.50	8.92%	3892.05	30.48%	2.89%	30.18%
GRASIM	2511.60	-105.30	-4.02%	9.74	244.10	2877.75	12.72%	2171.60	15.66%	8.71%	16.95%
HCLTECH	1377.95	-44.15	-3.10%	64.84	869.86	2012.20	31.52%	1235.00	11.57%	-8.72%	-7.97%
HDFCBANK	1760.05	-57.25	-3.15%	189.98	3341.98	1880.00	6.38%	1426.80	23.36%	7.58%	17.28%
HDFCLIFE	667.25	-21.80	-3.16%	38.62	257.73	761.20	12.34%	511.40	30.48%	10.21%	9.48%
HEROMOTOCO	3526.05	-133.15	-3.64%	6.06	210.60	6246.25	43.55%	3344.00	5.44%	0.18%	-19.13%
HINDALCO	564.45	-35.50	-5.92%	131.18	734.25	772.65	26.95%	546.45	3.29%	-13.22%	5.25%
HINDUNILVR	2250.00	5.45	0.24%	34.35	767.53	3035.00	25.86%	2136.00	5.34%	1.81%	-0.99%
ICICIBANK	1294.10	-41.20	-3.09%	191.85	2475.75	1373.00	5.75%	1048.10	23.47%	9.94%	23.25%
INDUSINDBK	678.50	-3.50	-0.51%	93.83	622.56	1576.35	56.96%	606.00	11.96%	-27.20%	-56.07%
INFY	1404.90	-46.75	-3.22%	217.15	2964.61	2006.45	29.98%	1307.00	7.49%	-13.90%	-1.86%
ITC	406.75	-2.95	-0.72%	267.63	1078.57	528.50	23.04%	390.15	4.25%	1.44%	-4.17%
JIOFIN	214.85	-7.47	-3.36%	257.72	542.94	394.70	45.57%	198.65	8.16%	0.23%	-40.43%
JSWSTEEL	930.00	-75.75	-7.53%	45.82	426.67	1074.90	13.48%	823.80	12.89%	-0.53%	17.34%
KOTAKBANK	2044.00	-87.95	-4.13%	71.39	1455.06	2202.50	7.20%	1543.85	32.40%	10.16%	19.43%
LT	3087.00	-173.15	-5.31%	49.54	1509.44	3963.50	22.11%	2965.30	4.10%	0.48%	-12.90%
M&M	2508.00	-88.55	-3.41%	39.37	978.87	3270.95	23.33%	1963.20	27.75%	-4.81%	28.97%
MARUTI	11352.95	-129.05	-1.12%	6.02	676.13	13680.00	17.01%	10725.00	5.86%	-1.56%	-7.56%
NESTLEIND	2255.00	-7.15	-0.32%	7.37	163.71	2778.00	18.83%	2110.00	6.87%	1.06%	-10.86%
NTPC	349.75	-0.65	-0.19%	180.25	618.87	448.45	22.01%	292.80	19.45%	6.33%	-1.17%
ONGC	220.35	-5.66	-2.50%	270.24	580.23	345.00	36.13%	205.00	7.49%	-2.95%	-15.65%
POWERGRID	290.65	-3.25	-1.11%	228.48	661.23	366.25	20.64%	247.30	17.53%	11.62%	5.57%
RELIANCE	1171.25	-33.45	-2.78%	221.56	2549.15	1608.80	27.20%	1114.85	5.06%	-3.61%	-58.75%
SBILIFE	1468.00	-44.60	-2.95%	9.17	133.97	1936.00	24.17%	1307.70	12.26%	7.16%	1.84%
SBIN	749.00	-18.45	-2.40%	149.23	1107.62	912.00	17.87%	680.00	10.15%	4.74%	0.35%
SHRIRAMFIN	619.00	-34.60	-5.29%	151.89	921.67	730.45	15.26%	438.60	41.13%	3.61%	-74.05%
SUNPHARMA	1677.10	-32.25	-1.89%	57.15	948.14	1960.35	14.45%	1377.20	21.78%	6.22%	6.24%
TATACONSUM	1048.00	-39.85	-3.66%	32.01	335.71	1250.10	16.17%	882.90	18.70%	13.08%	-2.48%
TATAMOTORS	581.10	-32.75	-5.34%	494.63	2785.59	1179.00	50.71%	535.75	8.46%	-5.31%	-39.05%
TATASTEEL	130.20	-10.19	-7.26%	1218.06	1554.37	184.60	29.47%	122.62	6.18%	-7.37%	-14.06%
TCS	3285.00	-14.40	-0.44%	66.24	2098.14	4592.25	28.47%	3056.05	7.49%	-8.63%	-17.08%
TECHM	1292.95	-28.00	-2.12%	30.45	382.30	1807.70	28.48%	1162.95	11.18%	-11.49%	4.56%
TITAN	3046.10	-30.10	-0.98%	13.79	413.21	3867.00	21.23%	2925.00	4.14%	-0.10%	-18.07%
TRENT	4745.05	-817.80	-14.70%	76.45	3576.63	8345.00	43.14%	3894.90	21.83%	11.26%	41.45%
ULTRACEMCO	11288.90	-209.75	-1.82%	4.85	538.30	12145.35	7.05%	9250.00	22.04%	8.66%	17.05%
WIPRO	243.15	-3.15	-1.28%	130.12	308.13	324.60	25.09%	208.50	16.62%	-13.52%	-49.22%
ZOMATO	211.00	0.47	0.22%	649.33	1334.18	304.70	30.75%	146.30	44.22%	-2.91%	10.51%

## Disclaimer / Disclosures

### ANALYST CERTIFICATION

I, Mrs. Vaishali Parekh B.com, Research Analyst, author and the name subscribed to this report, hereby certify that all of the views expressed in this research report accurately reflect our views about the subject issuer(s) or securities. We also certify that no part of our compensation was, is, or will be directly or indirectly related to the specific recommendation(s) or view(s) in this report.

Terms & conditions and other disclosures:

Prabhudas Lilladher Pvt. Ltd, Mumbai, India (hereinafter referred to as "PL") is engaged in the business of Stock Broking, Portfolio Manager, Depository Participant and distribution for third party financial products. PL is a subsidiary of Prabhudas Lilladher Advisory Services Pvt Ltd. which has its various subsidiaries engaged in business of commodity broking, investment banking, financial services (margin funding) and distribution of third party financial/other products, details in respect of which are available at [www.plindia.com](http://www.plindia.com)

This document has been prepared by the Research Division of PL and is meant for use by the recipient only as information and is not for circulation. This document is not to be reported or copied or made available to others without prior permission of PL. It should not be considered or taken as an offer to sell or a solicitation to buy or sell any security.

The information contained in this report has been obtained from sources that are considered to be reliable. However, PL has not independently verified the accuracy or completeness of the same. Neither PL nor any of its affiliates, its directors or its employees accepts any responsibility of whatsoever nature for the information, statements and opinion given, made available or expressed herein or for any omission therein.

Recipients of this report should be aware that past performance is not necessarily a guide to future performance and value of investments can go down as well. The suitability or otherwise of any investments will depend upon the recipient's particular circumstances and, in case of doubt, advice should be sought from an independent expert/advisor.

Either PL or its affiliates or its directors or its employees or its representatives or its clients or their relatives may have position(s), make market, act as principal or engage in transactions of securities of companies referred to in this report and they may have used the research material prior to publication.

PL may from time to time solicit or perform investment banking or other services for any company mentioned in this document.

PL is registered as Research Analyst under Securities and Exchange Board of India (Research Analysts) Regulations, 2014 PL submits that no material disciplinary action has been taken on us by any Regulatory Authority impacting Equity Research Analysis activities.

PL or its research analysts or its associates or his relatives do not have any financial interest in the subject company.

PL or its research analysts or its associates or his relatives do not have actual/beneficial ownership of one per cent or more securities of the subject company at the end of the month immediately preceding the date of publication of the research report.

PL or its research analysts or its associates or his relatives do not have any material conflict of interest at the time of publication of the research report.

PL or its associates might have received compensation from the subject company in the past twelve months.

PL or its associates might have managed or co-managed public offering of securities for the subject company in the past twelve months or mandated by the subject company for any other assignment in the past twelve months.

PL or its associates might have received any compensation for investment banking or merchant banking or brokerage services from the subject company in the past twelve months.

PL or its associates might have received any compensation for products or services other than investment banking or merchant banking or brokerage services from the subject company in the past twelve months PL or its associates might have received any compensation or other benefits from the subject company or third party in connection with the research report.

PL encourages independence in research report preparation and strives to minimize conflict in preparation of research report. PL or its analysts did not receive any compensation or other benefits from the subject Company or third party in connection with the preparation of the research report. PL or its Research Analysts do not have any material conflict of interest at the time of publication of this report.

It is confirmed that Mrs.Vaishali Parekh B.com, Research Analyst of this report has not received any compensation from the companies mentioned in the report in the preceding twelve months compensation of our Research Analysts is not based on any specific merchant banking, investment banking or brokerage service transactions.

The Research analysts for this report certifies that all of the views expressed in this report accurately reflect his or her personal views about the subject company or companies and its or their securities, and no part of his or her compensation was, is or will be, directly or indirectly related to specific recommendations or views expressed in this report.

The research analysts for this report has not served as an officer, director or employee of the subject company PL or its research analysts have not engaged in market making activity for the subject company

Our sales people, traders, and other professionals or affiliates may provide oral or written market commentary or trading strategies to our clients that reflect opinions that are contrary to the opinions expressed herein, and our proprietary trading and investing businesses may make investment decisions that are inconsistent with the recommendations expressed herein. In reviewing these materials, you should be aware that any or all of the foregoing, among other things, may give rise to real or potential conflicts of interest.

PL and its associates, their directors and employees may (a) from time to time, have a long or short position in, and buy or sell the securities of the subject company or (b) be engaged in any other transaction involving such securities and earn brokerage or other compensation or act as a market maker in the financial instruments of the subject company or act as an advisor or lender/borrower to the subject company or may have any other potential conflict of interests with respect to any recommendation and other related information and opinions.