

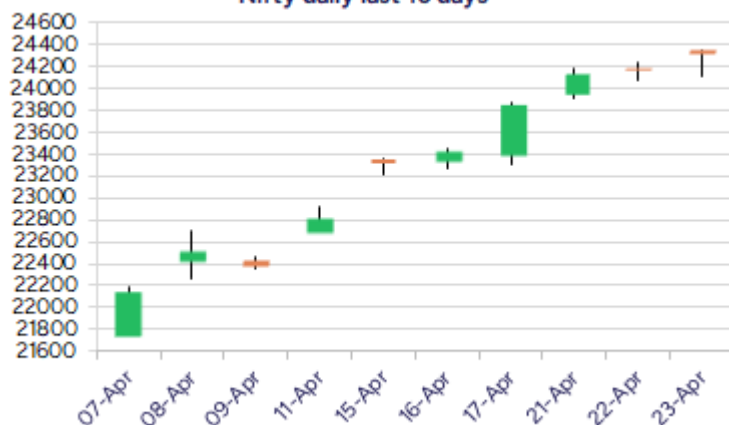
Date: 24th April 2025

* Sensex 80116.49 + 520.90

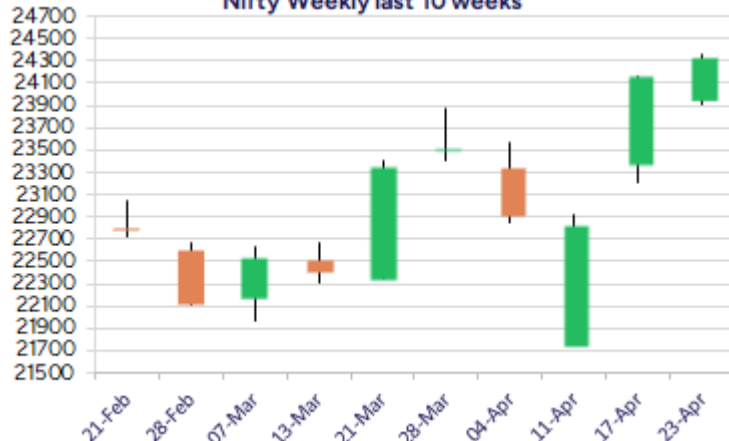
* Nifty 24328.95 + 161.70

* Bank Nifty 55370.05 - 277.15

Nifty daily last 10 days



Nifty Weekly last 10 weeks



*Blue candle → Close rate > Open rate * Red candle → Close rate < Open rate

Market Preview

Nifty ends above 24300 zone amid volatility

Nifty amid high volatility closed on a positive note above 24300 level with bias maintained intact and with 23800 zone as the major support, can expect for further rise. BankNifty succumbed to profit booking finding resistance near 56000 zone and ended the session near 55400 level. The market breadth managed to remain on the positive side with the advance decline indicating a ratio of 4:3 at close.

Market Forecast

Nifty daily range 24150-24500

Nifty, after opening with a gap up resisted near the 24350 zone and with volatility on the rise witnessed swings to close finally on a strong note above 24300 zone with bias and sentiment maintained strong anticipating for further rise in the coming days. As mentioned earlier, the index would have the near-term significant support positioned near the 23800 zone which once sustained, can expect for further upward move in the coming days with the overall trend maintained strong.

BankNifty, after the overheated sessions witnessed in the last 2 weeks witnessed resistance near the 56000 zone and with some profit booking seen slipped down to end near the 55350 levels with bias still maintained strong. The zone near 54500 level of the previous major peak zone would be the important support for the index which needs to be sustained, and thereafter can expect for further upward move in the coming days with the upside targets of 56200 and 57500 levels, still open for the index.

The support for the day is seen at 24150 levels while the resistance is seen at 24500 levels. BankNifty would have the daily range of 54800-56000 levels.

Indices	Period	Closing	% Chng	Trend	Reversal	2 Sup	1 Sup	Pivot	1 Res	2 Res
Nifty	Daily	24328.95	0.67%	7	23976.85	24030	24180	24269	24419	24509
	Weekly	23851.65	4.48%	5	22874.25	23102	23477	23674	24048	24245
	Monthly	23519.35	0.05%	-6	25020.35	21213	22366	23118	24271	25022
Bank Nifty	Daily	55370.05	-0.50%	6	54891.95	54608	54989	55544	55925	56480
	Weekly	54290.20	6.45%	5	51255.25	50990	52640	53519	55170	56049
	Monthly	51564.85	3.99%	-6	52195.95	46118	48841	50451	53175	54785
Sensex	Daily	80116.49	0.65%	7	78924.10	79212	79664	79959	80412	80707
	Weekly	78553.20	4.52%	5	75251.85	75708	77131	77872	79295	80036
	Monthly	77414.92	-0.11%	-6	82130.50	70156	73785	76263	79893	82371

Daily Trend turned Up			
Scrip Name	LCP	Curr Trnd	Reversal
BRITANNIA	5544.3	-2	5487.75
GLAXO	2846.6	-1	2845.75
GODREJCP	1268.5	-2	1261.05
NCC	219.78	-1	219.55
NTPC	363.8	-1	362.85
TORNTPOWER	1609.6	-1	1602.75
WIPRO	243.6	-1	234.8

Daily Trend turned Down			
Scrip Name	LCP	Curr Trnd	Reversal
ACC	2051.9	7	2070.3
BPCL	300.45	7	302.65
CUB	176.89	6	178.25
GRASIM	2685.6	5	2732.3
HAVELLS	1612	6	1624
HDFCLIFE	709.1	5	711.9
HEIDELBERG	199.01	7	199.4
HINDPETRO	388.8	8	395.15
INDHOTEL	822.9	5	827.2
JKLAKSHMI	799.8	5	817.6
M&MFIN	269.9	6	270.45

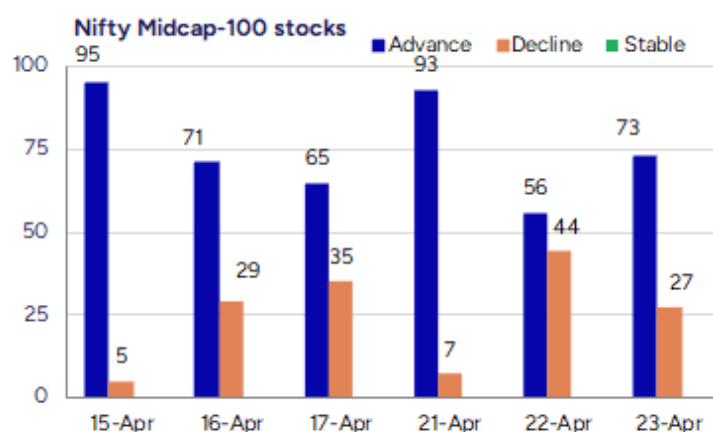
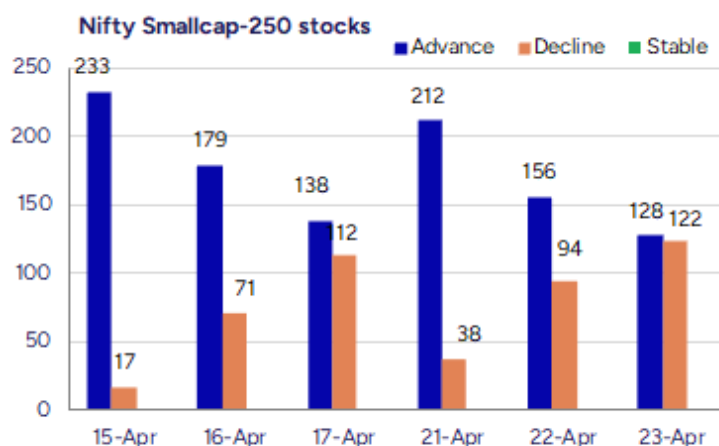
* Trends turned Up after a significant period

* Trends turned Down after a significant period

Gainers - Losers (Nifty 500 Stocks)

Gainers			
Company Name	Last Price	% Gain	Volume
Vardhman Steels	248.94	20	398481
Sigma Solve	331.42	20	66699
Aptech	157.52	20	3601399
Mindteck	217.08	20	1860145
Country Condos	8.97	19.92	3439752
TVS Electronics	416.85	19.36	1314273
Waaree Energies	3007.7	14.98	21374971

Losers			
Company Name	Last Price	% Loss	Volume
Saroja Pharma	37.5	-14.38	78400
JK Bank	103.18	-9.6	32537916
Prizor Viztech	143.25	-7.79	43200
Uma Exports	78.27	-7.38	1446620
Divine Hira Jew	51.5	-7.37	129600
Grand Continent	136.25	-7.22	114000
Ravi Kumar Dist	29.62	-6.62	112436



Nifty Daily chart with RSI indicator



BankNifty Daily chart with RSI indicator



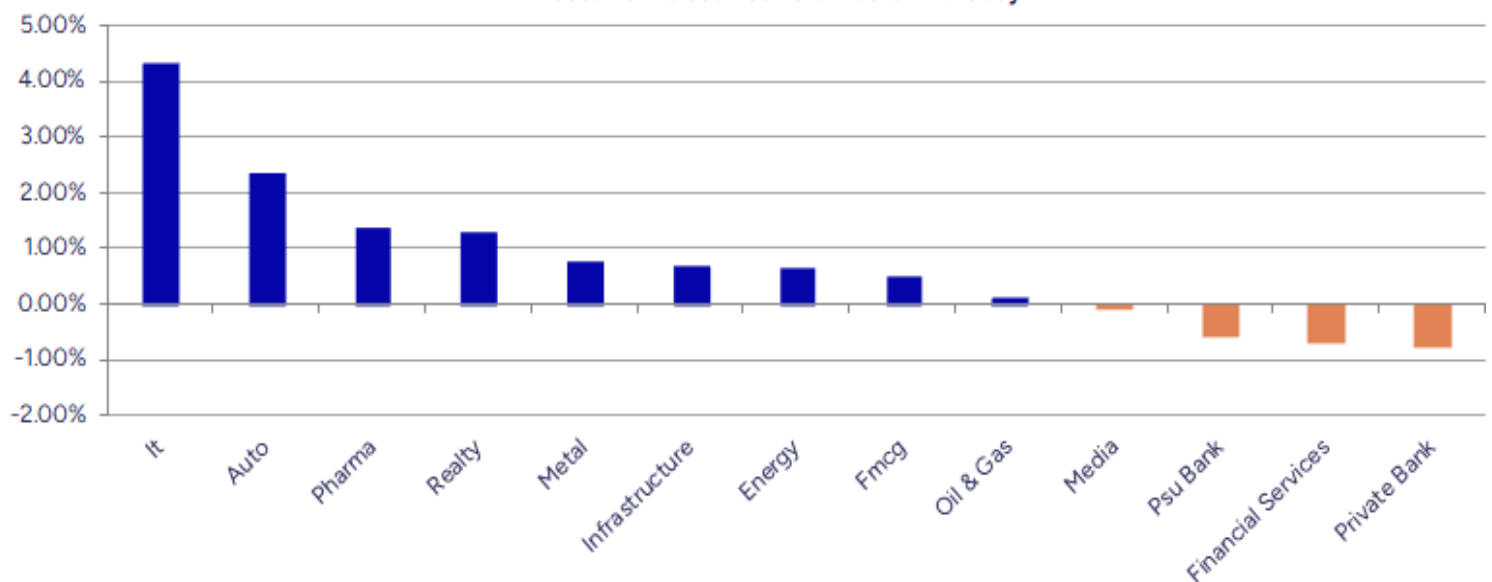
Breakouts - Cross above 200 DMA			
Company Name	LCP	Change %	200 DMA
TVS Electronics	416.85	13.27	368.02
Infinium Pharma	286.15	7.08	267.22
Sapphire Foods	338.75	5.13	322.22
Zenithexpo	287.13	4.19	275.58
Motilal Oswal	769	2.90	747.34
Megasoft	70.56	2.83	68.62
EIH	394	2.82	383.18
Torrent Pharma	3332.4	2.56	3249.37
Steel City Secu	102.73	2.51	100.21
Ashok Leyland	230.68	2.43	225.2
Inox Wind Energy	10325	1.97	10125.04
PVP Ventures	28.55	1.86	28.03
Embassy Office	380.91	1.79	374.21
Alpex Solar	800.25	1.58	787.77
M&M	2917.8	1.49	2874.96
Sun Pharma	1788.8	1.37	1764.6
Vishnu Chemical	433.5	1.33	427.81
Godrej Consumer	1268.5	122.00%	1253.27

* Stocks crossing above its Simple Moving Average (200DMA)

Breakdown - Cross below 200 DMA			
Company Name	LCP	Change %	200 DMA
Xelpmoc Design	113.86	-5.78	120.85
Indo-National	510.6	-4.14	532.63
Holmarc Opto Me	139	-1.93	141.73
PCBL Chemical	409.95	-1.66	416.87
Veekayem Fashio	240.65	-1.64	244.66
PB Fintech	1664.8	-1.46	1689.45
KHFM HOSPITALIT	89.85	-1.46	91.18
Jindal Drilling	721.85	-1.40	732.12
Dalmia Sugar	404.5	-1.25	409.61
Softtech Engine	380.9	-1.08	385.04
ITD Cementation	527	-1.05	532.59
Aegis Logistics	780.05	-0.94	787.46
Manoj Vaibhav G	240.02	-0.91	242.23
BPCL	300.45	-0.75	302.71
Piramal Enter	1021.5	-0.74	1029.07
DJ Mediaprint	129.68	-0.61	130.48
Pramara Promoti	147.75	-0.42	148.37
SKP Bearing	227	-0.35	227.8

* Stocks crossing below its Simple Moving Average (200DMA)

Sectoral Indices - Gainers Losers for the day



Stocks witnessing a volume surge as compared to their 5 day average volume

Watch out for the stocks that have seen a huge spurt in its share price over the last three days

Volume Shockers - NSE					
Company name	LCP	% Chg	Volume	Avg Vol *	% Chg
Diamond Power	103.39	-3.68	342951	6800	4943
Mindteck	217.08	20	1859113	45376	3997
Rajratan Global	436.55	11.89	2385540	61103	3804
Manaksia Steels	68.49	13.81	3613511	97401	3610
Krishna Institu	690.9	1.07	1663738	59456	2698
Remsons Ind	123.93	2.94	551570	21094	2515
BEW Engineering	208.4	-4.36	25500	1125	2167
Jash Engineerin	669.6	-1.8	573194	26774	2041
Atal	15.79	-0.82	2012241	100889	1895
Saroja Pharma	39.05	-10.84	43200	2240	1829
Latent View	421.5	7.46	5440598	309425	1658
Sampann Utpadan	35	4.63	469106	28673	1536
Kohinoor Foods	40.5	-2.29	949684	62231	1426
Sky Gold	335.95	-3.84	377818	25989	1354
Data Patterns	2154.8	1.16	1424569	106334	1240
G-Tec Jainx	29.3	-0.58	27454	2151	1176
Indo Tech Trans	2653.9	5	202937	16132	1158
Nacl Industries	198.74	-5	6984047	580493	1103
Transformers	556.3	-3.12	1531208	131705	1063
Newgen Software	989.75	5.18	1321028	114472	1054

* the Average Volume of last 5 days

Price Shockers - NSE				
Company name	LCP	Prv Close	% Chg	Volume
Primo Chemicals	27.73	3.15	780.32	141835
Rajratan Global	438	311.5	40.61	2503858
Manaksia Steels	68.04	50.82	33.88	3707142
Indowind Energy	22.07	17.5	26.11	2188383
Sampann Utpadan	35	27.8	25.9	502411
Aptech	157.52	125.53	25.48	3601399
Zenithexpo	287.13	230.47	24.58	4573
Liberty Shoes	419.05	339.85	23.3	92311
TVS Electronics	416.85	339.05	22.95	1314273
Vaswani Ind	47.75	38.91	22.72	1377088
Pulz Electronic	60	49.05	22.32	58000
Mindteck	217.08	178.97	21.29	1860145
Infinium	286.15	236.5	20.99	19000
Voler Car	110.8	92.05	20.37	414400
Jyoti Structure	21.23	17.65	20.28	53973342
Vardhman Steels	248.94	207.89	19.75	398481
SEL Mgf Company	38.23	31.96	19.62	76305
Agri-Tech	171.48	143.57	19.44	175196
Tilaknagar Ind	301.47	253.81	18.78	3871725
Chetana Educati	106.6	90	18.44	27200

* the % price rise of the last 3 days

Nifty 50 stocks - Summary Details											
Symbol	LTP	Chng	% Chng	Volume (lacs)	Turnover (crs.)	52w High	Diff with 52w H	52w Low	Diff with 52w L	365 days % chng	30 days % chng
NIFTY 50	24328.95	161.70	0.67%	4150.32	34526.16	26277.35	7.41%	21281.45	14.32%	3.50%	8.20%
ADANIEN	2446.00	0.50	0.02%	6.72	164.58	3743.90	34.67%	2025.00	20.79%	3.50%	-20.17%
ADANIPTS	1237.00	3.80	0.31%	25.81	318.15	1621.40	23.71%	995.65	24.24%	3.73%	-6.65%
APOLLOHOSP	7110.50	22.00	0.31%	2.88	205.10	7545.35	5.76%	5693.20	24.89%	7.21%	13.62%
ASIANPAINT	2447.50	15.50	0.64%	7.45	181.99	3394.90	27.91%	2124.75	15.19%	5.72%	-14.42%
AXISBANK	1206.00	-10.80	-0.89%	94.34	1137.80	1339.65	9.98%	933.50	29.19%	13.70%	15.45%
BAJAJ-AUTO	8229.00	88.00	1.08%	5.99	489.01	12774.00	35.58%	7089.35	16.08%	0.91%	-7.44%
BAJAJFINSV	2097.30	20.30	0.98%	14.83	310.11	2118.70	1.01%	1419.05	47.80%	12.44%	27.47%
BAJFINANCE	9305.00	44.50	0.48%	10.82	1000.02	9393.00	0.94%	6375.70	45.94%	3.86%	26.99%
BEL	305.60	2.25	0.74%	219.19	670.91	340.50	10.25%	221.00	38.28%	2.57%	30.03%
BHARTIARTL	1869.90	17.70	0.96%	68.55	1276.15	1904.30	1.81%	1219.05	53.39%	7.32%	42.75%
CIPLA	1532.00	3.80	0.25%	8.19	125.18	1702.05	9.99%	1317.25	16.30%	0.29%	12.79%
COALINDIA	398.20	-0.40	-0.10%	74.29	296.18	543.55	26.74%	349.25	14.02%	-1.68%	-10.01%
DRREDDY	1183.10	8.10	0.69%	31.92	377.92	1421.49	16.77%	1020.00	15.99%	-2.10%	-80.47%
EICHERMOT	5730.00	-54.00	-0.93%	5.83	332.82	5906.50	2.99%	4253.85	34.70%	9.01%	29.48%
GRASIM	2695.00	-54.40	-1.98%	6.04	163.06	2877.75	6.35%	2171.60	24.10%	11.34%	20.56%
HCLTECH	1594.40	114.50	7.74%	132.93	2104.61	2012.20	20.76%	1235.00	29.10%	-5.54%	0.96%
HDFCBANK	1920.70	-41.00	-2.09%	152.85	2963.85	1978.90	2.94%	1426.80	34.62%	10.81%	29.72%
HDFCLIFE	708.20	-4.35	-0.61%	20.91	148.54	761.20	6.96%	511.40	38.48%	4.85%	17.59%
HEROMOTOCO	3930.00	96.40	2.51%	8.01	311.35	6246.25	37.08%	3344.00	17.52%	5.64%	-11.09%
HINDALCO	627.70	7.60	1.23%	46.75	293.23	772.65	18.76%	546.45	14.87%	-10.82%	0.25%
HINDUNILVR	2422.00	23.30	0.97%	22.26	538.63	3035.00	20.20%	2136.00	13.39%	6.79%	7.01%
ICICIBANK	1422.00	5.50	0.39%	139.91	1988.16	1436.00	0.97%	1051.05	35.29%	5.46%	30.35%
INDUSINDBK	793.00	5.50	0.70%	106.58	846.20	1550.00	48.84%	606.00	30.86%	14.65%	-46.70%
INFY	1476.20	53.40	3.75%	111.37	1638.70	2006.45	26.43%	1307.00	12.95%	-10.66%	-0.69%
ITC	430.15	-3.45	-0.80%	195.65	843.51	528.50	18.61%	390.15	10.25%	6.92%	1.95%
JIOFIN	258.02	7.46	2.98%	375.67	960.84	394.70	34.63%	198.65	29.89%	9.36%	-34.53%
JSWSTEEL	1035.70	-8.50	-0.81%	8.94	92.81	1074.90	3.65%	823.80	25.72%	-1.37%	22.16%
KOTAKBANK	2221.40	-47.40	-2.09%	35.24	789.42	2301.90	3.50%	1543.85	43.89%	9.13%	25.35%
LT	3296.00	38.20	1.17%	23.82	783.85	3963.50	16.84%	2965.30	11.15%	-4.63%	-9.82%
M&M	2900.90	83.80	2.97%	39.06	1129.26	3270.95	11.31%	2001.00	44.97%	0.54%	34.75%
MARUTI	11900.00	166.00	1.41%	4.94	584.08	13680.00	13.01%	10725.00	10.96%	0.01%	-8.22%
NESTLEIND	2430.00	22.70	0.94%	5.83	141.36	2778.00	12.53%	2110.00	15.17%	6.10%	-2.09%
NTPC	362.60	2.35	0.65%	97.19	351.14	448.45	19.14%	292.80	23.84%	2.55%	5.06%
ONGC	252.10	4.32	1.74%	165.56	412.02	345.00	26.93%	205.00	22.98%	2.21%	-10.48%
POWERGRID	314.05	1.50	0.48%	82.26	257.35	366.25	14.25%	247.30	26.99%	10.40%	10.19%
RELIANCE	1297.00	5.80	0.45%	104.80	1359.34	1608.80	19.38%	1114.85	16.34%	1.16%	-56.37%
SBILIFE	1622.00	3.00	0.19%	11.36	183.09	1936.00	16.22%	1307.70	24.03%	4.69%	9.73%
SBIN	813.50	-8.90	-1.08%	121.04	989.35	912.00	10.80%	680.00	19.63%	9.19%	7.35%
SHRIRAMFIN	702.00	-1.50	-0.21%	54.42	380.81	730.45	3.89%	438.60	60.05%	3.95%	-70.99%
SUNPHARMA	1785.20	37.80	2.16%	14.71	261.24	1960.35	8.93%	1377.20	29.63%	-2.08%	13.46%
TATACONSUM	1145.00	8.30	0.73%	17.60	201.42	1250.10	8.41%	882.90	29.69%	18.26%	-2.92%
TATAMOTORS	658.85	28.00	4.44%	233.90	1520.35	1179.00	44.12%	535.75	22.98%	-10.26%	-35.20%
TATASTEEL	140.70	2.54	1.84%	378.50	528.31	184.60	23.78%	122.62	14.74%	-12.16%	-14.64%
TCS	3405.00	90.60	2.73%	35.44	1204.46	4592.25	25.85%	3056.05	11.42%	-7.37%	-14.24%
TECHM	1442.00	65.50	4.76%	59.44	852.99	1807.70	20.23%	1172.80	22.95%	-2.32%	13.94%
TITAN	3350.30	12.90	0.39%	6.29	210.47	3867.00	13.36%	2925.00	14.54%	5.52%	-7.21%
TRENT	5334.00	11.00	0.21%	9.70	513.61	8345.00	36.08%	4052.40	31.63%	3.36%	27.69%
ULTRACEMCO	11867.00	-92.00	-0.77%	2.68	319.13	12145.35	2.29%	9408.05	26.14%	8.95%	25.03%
WIPRO	243.20	9.05	3.87%	318.96	769.56	324.60	25.08%	208.50	16.64%	-11.41%	-49.32%
ETERNAL	238.15	0.68	0.29%	422.95	1004.16	304.70	21.84%	146.30	62.78%	#VALUE!	#VALUE!

Disclaimer / Disclosures

ANALYST CERTIFICATION

I, Mrs. Vaishali Parekh B.com, Research Analyst, author and the name subscribed to this report, hereby certify that all of the views expressed in this research report accurately reflect our views about the subject issuer(s) or securities. We also certify that no part of our compensation was, is, or will be directly or indirectly related to the specific recommendation(s) or view(s) in this report.

Terms & conditions and other disclosures:

Prabhudas Lilladher Pvt. Ltd, Mumbai, India (hereinafter referred to as "PL") is engaged in the business of Stock Broking, Portfolio Manager, Depository Participant and distribution for third party financial products. PL is a subsidiary of Prabhudas Lilladher Advisory Services Pvt Ltd. which has its various subsidiaries engaged in business of commodity broking, investment banking, financial services (margin funding) and distribution of third party financial/other products, details in respect of which are available at www.plindia.com

This document has been prepared by the Research Division of PL and is meant for use by the recipient only as information and is not for circulation. This document is not to be reported or copied or made available to others without prior permission of PL. It should not be considered or taken as an offer to sell or a solicitation to buy or sell any security.

The information contained in this report has been obtained from sources that are considered to be reliable. However, PL has not independently verified the accuracy or completeness of the same. Neither PL nor any of its affiliates, its directors or its employees accepts any responsibility of whatsoever nature for the information, statements and opinion given, made available or expressed herein or for any omission therein.

Recipients of this report should be aware that past performance is not necessarily a guide to future performance and value of investments can go down as well. The suitability or otherwise of any investments will depend upon the recipient's particular circumstances and, in case of doubt, advice should be sought from an independent expert/advisor.

Either PL or its affiliates or its directors or its employees or its representatives or its clients or their relatives may have position(s), make market, act as principal or engage in transactions of securities of companies referred to in this report and they may have used the research material prior to publication.

PL may from time to time solicit or perform investment banking or other services for any company mentioned in this document.

PL is registered as Research Analyst under Securities and Exchange Board of India (Research Analysts) Regulations, 2014 PL submits that no material disciplinary action has been taken on us by any Regulatory Authority impacting Equity Research Analysis activities.

PL or its research analysts or its associates or his relatives do not have any financial interest in the subject company.

PL or its research analysts or its associates or his relatives do not have actual/beneficial ownership of one per cent or more securities of the subject company at the end of the month immediately preceding the date of publication of the research report.

PL or its research analysts or its associates or his relatives do not have any material conflict of interest at the time of publication of the research report.

PL or its associates might have received compensation from the subject company in the past twelve months.

PL or its associates might have managed or co-managed public offering of securities for the subject company in the past twelve months or mandated by the subject company for any other assignment in the past twelve months.

PL or its associates might have received any compensation for investment banking or merchant banking or brokerage services from the subject company in the past twelve months.

PL or its associates might have received any compensation for products or services other than investment banking or merchant banking or brokerage services from the subject company in the past twelve months PL or its associates might have received any compensation or other benefits from the subject company or third party in connection with the research report.

PL encourages independence in research report preparation and strives to minimize conflict in preparation of research report. PL or its analysts did not receive any compensation or other benefits from the subject Company or third party in connection with the preparation of the research report. PL or its Research Analysts do not have any material conflict of interest at the time of publication of this report.

It is confirmed that Mrs.Vaishali Parekh B.com, Research Analyst of this report has not received any compensation from the companies mentioned in the report in the preceding twelve months compensation of our Research Analysts is not based on any specific merchant banking, investment banking or brokerage service transactions.

The Research analysts for this report certifies that all of the views expressed in this report accurately reflect his or her personal views about the subject company or companies and its or their securities, and no part of his or her compensation was, is or will be, directly or indirectly related to specific recommendations or views expressed in this report.

The research analysts for this report has not served as an officer, director or employee of the subject company PL or its research analysts have not engaged in market making activity for the subject company

Our sales people, traders, and other professionals or affiliates may provide oral or written market commentary or trading strategies to our clients that reflect opinions that are contrary to the opinions expressed herein, and our proprietary trading and investing businesses may make investment decisions that are inconsistent with the recommendations expressed herein. In reviewing these materials, you should be aware that any or all of the foregoing, among other things, may give rise to real or potential conflicts of interest.

PL and its associates, their directors and employees may (a) from time to time, have a long or short position in, and buy or sell the securities of the subject company or (b) be engaged in any other transaction involving such securities and earn brokerage or other compensation or act as a market maker in the financial instruments of the subject company or act as an advisor or lender/borrower to the subject company or may have any other potential conflict of interests with respect to any recommendation and other related information and opinions.