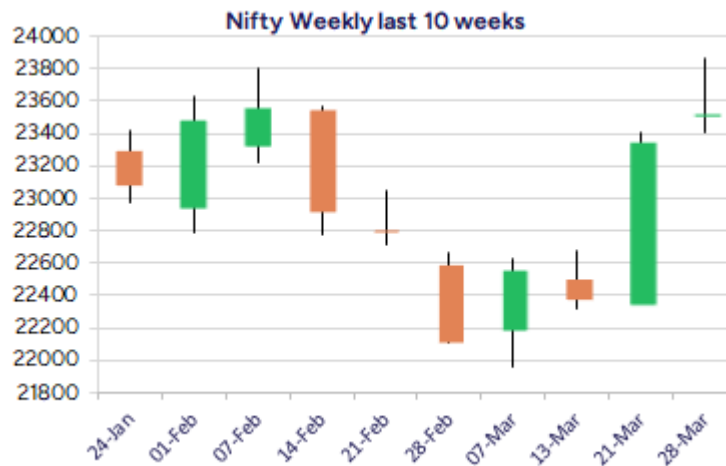
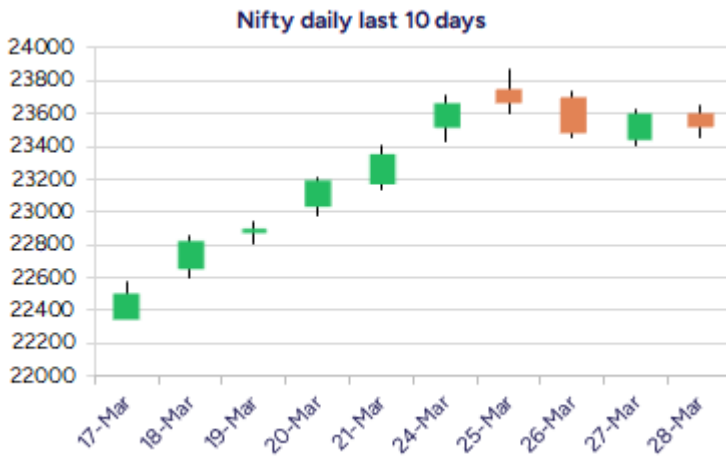


\* Sensex 77414.92 -191.51

\* Nifty 23519.35 -72.60

\* Bank Nifty 51564.85 -11.00



\*Blue candle → Close rate > Open rate \* Red candle → Close rate < Open rate

## Market Preview

### Nifty finds consolidation near 23500 zone

Nifty amid volatility witnessed consolidation near the 23500 zone with overall bias maintained positive with the broader markets supporting the benchmark indices. BankNifty ended the session near 51600 zone on a flat note with strength indicated anticipating for further rise in the coming days. The market breadth was slightly on the positive side with the advance decline indicating a ratio of 3:2 at close.

## Market Forecast

### Nifty daily range 23400-23700

Nifty, witnessed consolidation near the 23500 zone with slight fluctuations witnessed on the last day of the trading session of the financial year with overall bias maintained positive, having support near the 23350 zone and once a decisive breach above 23700 zone is confirmed, can trigger for next targets of 23800 and 24200 levels in the coming days with the undertone much better placed than before.

BankNifty, has indicated strength as compared to Nifty index and has maintained above the important 200 period MA at 51000 zone which shall be the crucial near-term support and needs to be sustained. As mentioned earlier, a decisive breach above the resistance level of 52000 shall trigger for fresh positive upward move with targets of 52600 and 53800 levels expected in the coming sessions.

The support for the day is seen at 23400 levels while the resistance is seen at 23700 levels. BankNifty would have the daily range of 51200-52200 levels.

Indices	Period	Closing	% Chng	Trend	Reversal	2 Sup	1 Sup	Pivot	1 Res	2 Res
Nifty	Daily	23519.35	-0.31%	-1	23659.55	23341	23430	23540	23629	23739
	Weekly	23519.35	0.72%	2	22456.20	23156	23338	23604	23785	24051
	Monthly	23519.35	0.05%	-6	25020.35	21213	22366	23118	24271	25022
Bank Nifty	Daily	51564.85	-0.02%	10	51560.95	51076	51320	51580	51824	52084
	Weekly	51564.85	1.92%	2	48907.35	50254	50910	51485	52141	52716
	Monthly	51564.85	3.99%	-6	52195.95	46118	48841	50451	53175	54785
Sensex	Daily	77414.92	-0.25%	-1	77893.80	76875	77145	77456	77726	78037
	Weekly	77414.92	0.66%	2	74177.95	76094	76754	77748	78408	79402
	Monthly	77414.92	-0.11%	-6	82130.50	70156	73785	76263	79893	82371

## Daily Trend turned Down

Scrip Name	LCP	Curr Trnd	Reversal
AUBANK	534.6	7	551.3
BAJAJ AUTO	7878.85	14	7976.45
BIRLACORPN	1055.85	16	1066.9
DIVISLAB	5775.45	12	5860.8
FEDERALBNK	192.73	8	195.3
GREENPLY	286.2	7	290.3
HDFCAMC	4013.9	8	4070.7
ICICIPRULI	564.35	9	588.6
IEX	175.77	9	176.2
INFY	1570.65	6	1580.65
INTELLECT	692.7	8	715.6
JKLAKSHMI	774.1	9	785.2

\* Trends turned Down after a significant period

## Daily Trend turned Down

Scrip Name	LCP	Curr Trnd	Reversal
MOTHERSUMI	130.96	8	132.6
MRPL	134.44	16	136.7
NAM-INDIA	578.55	17	585.65
PEL	987.85	8	999.65
RBLBANK	173.53	8	175.2
SPARC	147.91	8	149.9
SRTRANSFIN	656	8	675.35
SUNTV	649.95	14	661.1
TATAELXSI	5214.6	8	5428.05
TATAPOWER	375.4	8	382.05
TORNTPOWER	1486.85	8	1513.45
UPL	636.25	9	655.95

\* Trends turned Down after a significant period

## Gainers - Losers ( Nifty 500 Stocks )

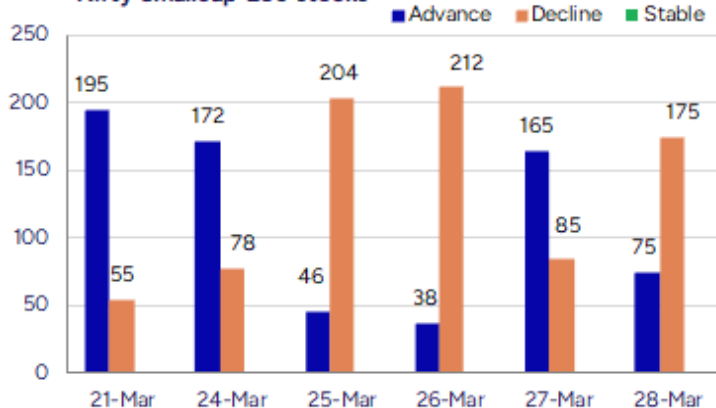
## Gainers

Scrip Name	LCP	% Change	Volume
Zenith Drugs	71.7	20	148800
Vilin Bio	20.4	20	40000
Sarthak Metals	118.92	20	165768
Paramount Dye	56.8	19.96	42000
BSE Limited	5479.8	16.98	18771717
DRC Systems	30	15.87	3101741
Rajshree Polypa	22.6	14.26	582469

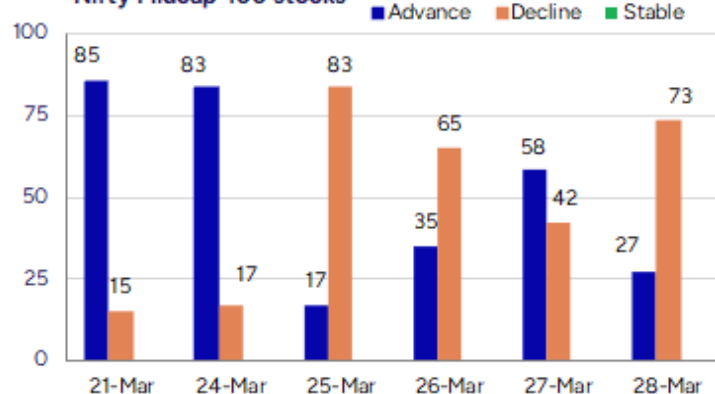
## Losers

Scrip Name	LCP	% Change	Volume
Aegis Logistics	805.45	-10.76	2993369
AKG Exim	12.46	-10.74	471527
Saroja Pharma	37.75	-8.93	9600
Garware Technic	864.7	-8.46	351130
Srivasavi	62.3	-8.38	37000
Aarey Drugs	33.51	-8.19	118988
Andhra Cement	49.14	-8.15	302122

## Nifty Smallcap-250 stocks



## Nifty Midcap-100 stocks



### Nifty Daily chart with RSI indicator



### BankNifty Daily chart with RSI indicator



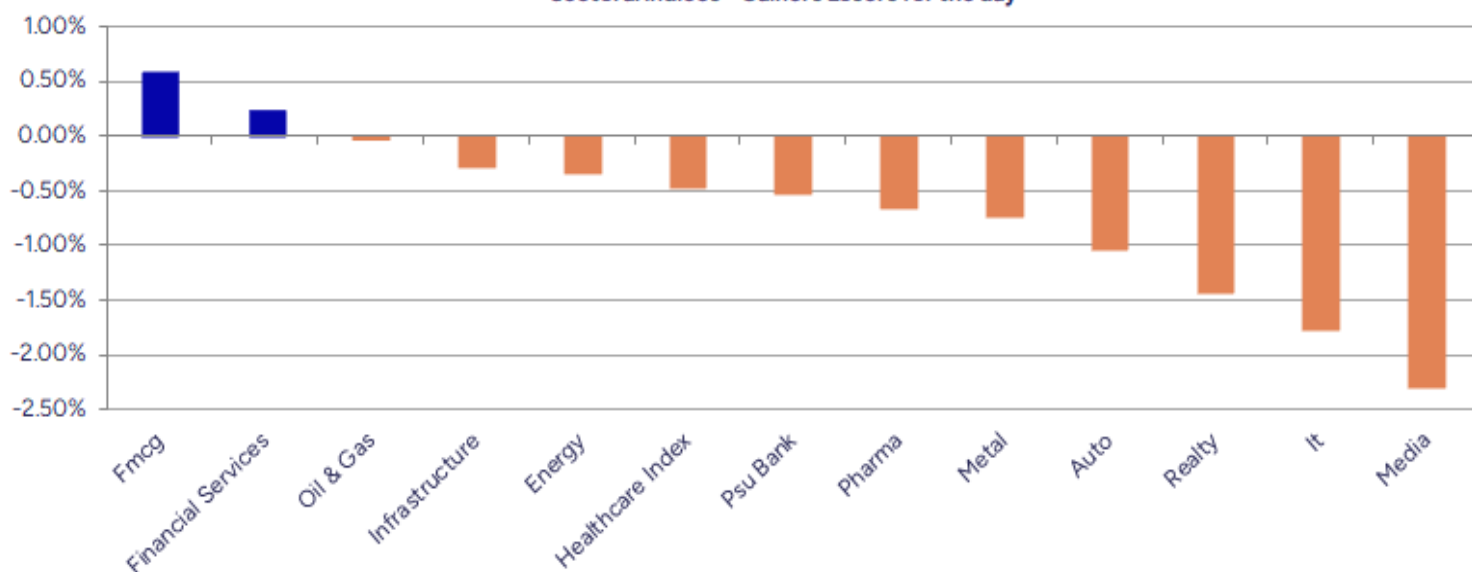
Breakouts - Cross above 200 DMA			
Company Name	LCP	Change %	200 DMA
DRC Systems	30	14.37	26.23
Mahickra Chemic	125.4	11.38	112.59
Spectrum Electr	2057.05	7.19	1919
Naga Dhunseri	4128.05	4.28	3958.56
Crop Life Sci.	51	3.47	49.29
Mega Flex	47.25	2.96	45.89
McLeod	33.75	1.72	33.18
Krishana Phosch	235.22	1.60	231.51
Rainbow Childre	1401.7	1.51	1380.88
HF	566.35	1.33	558.9
Ceat	2879.5	1.28	2843.23
AMSL	273.46	1.22	270.16
Medico Remedies	51.57	1.20	50.96
Power Mech	2717.65	1.14	2686.94
Ramdevbaba Solv	114.65	1.02	113.49
Dalmia Bharat	1821.55	0.29	1816.2
Sundaram Fin	4574.45	0.19	4565.62
SAR Televenture	280.3	17.00%	279.82

\* Stocks crossing above its Simple Moving Average (200DMA)

Breakdown - Cross below 200 DMA			
Company Name	LCP	Change %	200 DMA
Rajdarshan Ind	48.39	-2.73	49.75
M&M Financial	283	-2.16	289.25
Lotus Eye Care	66.99	-1.64	68.11
Sagardeep Alloy	28.73	-1.34	29.12
Krsnaa	787.9	-1.28	798.08
Page Industries	42693.75	-1.09	43162.5
Mankind Pharma	2424.75	-0.99	2448.93
KPR Mill	906.5	-0.91	914.82
IndiGrid Infra	140.91	-0.74	141.96
Lumax Inds	2533.35	-0.70	2551.33
Ganesh Housing	1059.15	-0.68	1066.35
Va Tech Wabag	1454.65	-0.65	1464.11
Panama Petro	380.65	-0.60	382.94
Mirae S&P 500	49.44	-0.56	49.72
DCM	97.14	-0.44	97.57
Godrej Agrovet	753.7	-0.19	755.17
Ram Ratna Wires	539.3	-0.16	540.19
Cigniti Tech	1464.15	-0.13	1466.07

\* Stocks crossing below its Simple Moving Average (200DMA)

Sectoral Indices - Gainers Losers for the day



Stocks witnessing a volume surge as compared to their 5 day average volume

Watch out for the stocks that have seen a huge spurt in its share price over the last three days

Volume Shockers - NSE					
Company name	LCP	% Chg	Volume	Avg Vol *	% Chg
Punjab Chemical	926.95	<b>10.48</b>	869153	8140	10577
Mahickra Chemic	125.4	<b>14.26</b>	147000	1950	7438
Lloyds Luxuries	91	<b>-2.15</b>	1020000	13800	7291
Jindal Worldwid	71.37	<b>7.65</b>	9108797	138074	6497
BEW Engineering	147.15	<b>3.74</b>	71000	1125	6211
Capri Global	170.21	<b>3.22</b>	60781478	1000204	5977
Innovana	296.95	<b>8.04</b>	231894	5600	4041
Praxis Home Ret	8.84	<b>-4.23</b>	2541340	62438	3970
MBL Infra	45.19	<b>9.15</b>	2439277	65421	3629
RHI Magnesita	507.3	<b>-1.44</b>	6562670	192099	3316
DB (Int) Stock	28.24	<b>0.28</b>	797291	28116	2736
Pritish Nandy	26	<b>1.48</b>	649320	25706	2426
Garware Technic	864.7	<b>-8.46</b>	351130	14113	2388
Orient Bell	228.15	<b>-2.48</b>	474824	19579	2325
Aster DM Health	483.5	<b>6.65</b>	26484698	1096909	2314
HEG	482.85	<b>-0.65</b>	1621230	80062	1925
Oneclick Logi.	144.45	<b>-2.46</b>	82800	4320	1817
BSE Limited	5479.8	<b>16.98</b>	18772843	984644	1807
Nakoda Group	35.38	<b>5.74</b>	542889	30660	1671
Radiant Cash	51.08	<b>-4.79</b>	5463277	324247	1585

\* the Average Volume of last 5 days

Price Shockers - NSE				
Company name	LCP	3 days *	% Chg	Volume
Jindal Worldwid	71.37	56.45	<b>26.43</b>	9106366
Aristo Bio-Tech	116.2	92	<b>26.3</b>	68800
MBL Infra	45.19	36.3	<b>24.49</b>	2437941
Tourism Finance	169.84	139.85	<b>21.44</b>	2133460
BSE Limited	5479.8	4651.65	<b>17.8</b>	18771717
Pil Italica	14.54	12.35	<b>17.73</b>	798309
Lloyds Luxuries	91	78.2	<b>16.37</b>	1020000
Websol Energy	1194.05	1031.5	<b>15.76</b>	57211
BEML	3219.55	2781.65	<b>15.74</b>	2297823
ASL Industries	38.85	33.6	<b>15.63</b>	4000
Reliance Power	42.98	37.25	<b>15.38</b>	84898133
Magson Retail	114.45	99.6	<b>14.91</b>	4000
Mold Tek Tech	148.72	130.03	<b>14.37</b>	419967
BF Utilities	751.65	658.75	<b>14.1</b>	533557
Creative New	754.95	667.4	<b>13.12</b>	33317
Eleganz Interio	122.15	108.45	<b>12.63</b>	101000
HP Telecom Ind	122.6	109	<b>12.48</b>	22800
Spectrum Electr	2057.05	1831.9	<b>12.29</b>	12943
Punjab Chemical	926.95	826.65	<b>12.13</b>	869057
Mahickra Chemic	125.4	111.9	<b>12.06</b>	147000

\* the % price rise of the last 3 days

Nifty 50 stocks - Summary Details											
Symbol	LTP	Chng	% Chng	Volume (lacs)	Turnover (crs.)	52w High	Diff with 52w H	52w Low	Diff with 52w L	365 days % chng	30 days % chng
NIFTY 50	23519.35	-72.60	-0.31%	3874.05	29152.77	26277.35	10.50%	21281.45	10.52%	4.63%	6.64%
ADANIEN	2316.65	-46.70	-1.98%	18.39	428.55	3743.90	38.12%	2025.00	14.40%	10.96%	-24.30%
ADANIPTS	1180.50	-16.25	-1.36%	16.71	198.84	1621.40	27.19%	995.65	18.57%	10.77%	-9.53%
APOLLOHOSP	6614.00	121.95	1.88%	4.14	271.85	7545.35	12.34%	5693.20	16.17%	3.85%	4.18%
ASIANPAINT	2326.25	-11.85	-0.51%	12.82	300.40	3394.90	31.48%	2124.75	9.48%	5.09%	-17.40%
AXISBANK	1101.00	2.65	0.24%	49.21	541.32	1339.65	17.81%	933.50	17.94%	8.84%	4.32%
BAJAJ-AUTO	7859.95	-114.35	-1.43%	3.92	310.72	12774.00	38.47%	7301.00	7.66%	-5.27%	-12.97%
BAJAJFINSV	2002.30	-3.45	-0.17%	19.07	382.80	2029.90	1.36%	1419.05	41.10%	6.97%	26.73%
BAJFINANCE	8929.90	-73.95	-0.82%	9.77	873.05	9260.05	3.57%	6375.70	40.06%	6.07%	28.21%
BEL	301.33	0.68	0.23%	208.49	631.74	340.50	11.50%	198.00	52.19%	17.14%	50.74%
BHARTIARTL	1727.40	2.70	0.16%	41.33	715.38	1779.00	2.90%	1183.10	46.01%	5.07%	40.81%
CIPLA	1441.00	-41.90	-2.83%	14.96	216.84	1702.05	15.34%	1317.25	9.39%	1.34%	1.34%
COALINDIA	397.30	0.45	0.11%	69.24	275.87	543.55	26.91%	349.25	13.76%	9.89%	-7.59%
DRREDDY	1145.00	-17.20	-1.48%	27.63	317.18	1421.49	19.45%	1092.45	4.81%	3.02%	-80.77%
EICHERMOT	5345.25	-0.50	-0.01%	2.87	153.58	5575.50	4.13%	3886.10	37.55%	7.13%	36.59%
GRASIM	2605.50	-13.20	-0.50%	4.35	113.84	2877.75	9.46%	2171.60	19.98%	10.06%	18.64%
HCLTECH	1591.00	-39.15	-2.40%	22.11	354.46	2012.20	20.93%	1235.00	28.83%	-0.36%	5.43%
HDFCBANK	1825.50	0.15	0.01%	143.87	2621.08	1880.00	2.90%	1421.25	28.44%	8.50%	26.70%
HDFCLIFE	684.00	2.10	0.31%	31.17	213.23	761.20	10.14%	511.40	33.75%	9.60%	8.87%
HEROMOTOCO	3721.00	-51.05	-1.35%	5.10	191.45	6246.25	40.43%	3461.60	7.49%	-1.47%	-17.51%
HINDALCO	682.00	-11.35	-1.64%	43.62	298.41	772.65	11.73%	555.30	22.82%	11.93%	24.33%
HINDUNILVR	2257.85	13.20	0.59%	22.80	517.33	3035.00	25.61%	2136.00	5.70%	-0.65%	0.22%
ICICIBANK	1348.00	11.35	0.85%	82.66	1112.58	1373.00	1.82%	1048.10	28.61%	9.19%	23.34%
INDUSINDBK	649.05	-24.50	-3.64%	88.05	578.10	1576.35	58.83%	606.00	7.10%	-34.88%	-56.08%
INFY	1569.00	-34.55	-2.15%	67.98	1071.61	2006.45	21.80%	1358.35	15.51%	-9.29%	8.07%
ITC	410.25	0.80	0.20%	129.69	532.92	528.50	22.37%	391.20	4.87%	1.14%	-4.33%
JIOFIN	227.03	1.25	0.55%	303.54	695.45	394.70	42.48%	198.65	14.29%	-0.24%	-35.62%
JSWSTEEL	1060.00	0.25	0.02%	16.74	177.86	1074.90	1.39%	815.40	30.00%	10.53%	29.55%
KOTAKBANK	2174.00	45.35	2.13%	36.72	795.79	2202.50	1.29%	1543.85	40.82%	8.20%	19.88%
LT	3488.00	-13.60	-0.39%	13.48	470.58	3963.50	12.00%	3141.00	11.05%	8.55%	-5.53%
M&M	2661.15	-71.85	-2.63%	60.74	1615.54	3270.95	18.64%	1855.30	43.44%	-1.61%	45.28%
MARUTI	11490.15	-231.80	-1.98%	5.42	625.79	13680.00	16.01%	10725.00	7.13%	-6.05%	-6.30%
NESTLEIND	2247.00	4.95	0.22%	7.16	161.94	2778.00	19.11%	2110.00	6.49%	-0.37%	-12.64%
NTPC	358.00	-2.65	-0.73%	113.27	406.95	448.45	20.17%	292.80	22.27%	13.16%	8.76%
ONGC	246.50	4.33	1.79%	329.04	826.28	345.00	28.55%	215.48	14.40%	3.94%	-7.48%
POWERGRID	290.40	-5.10	-1.73%	108.35	314.61	366.25	20.71%	247.30	17.43%	15.54%	9.34%
RELIANCE	1274.00	-4.20	-0.33%	181.43	2318.92	1608.80	20.81%	1156.00	10.21%	6.16%	-57.19%
SBILIFE	1550.00	5.10	0.33%	11.20	173.69	1936.00	19.94%	1307.70	18.53%	4.97%	4.42%
SBIN	771.20	-1.10	-0.14%	76.20	589.28	912.00	15.44%	680.00	13.41%	8.64%	5.32%
SHRIRAMFIN	656.25	-22.25	-3.28%	68.06	449.41	730.45	10.16%	438.60	49.62%	18.15%	-71.57%
SUNPHARMA	1733.95	2.50	0.14%	19.57	337.66	1960.35	11.55%	1377.20	25.90%	7.30%	7.94%
TATACONSUM	1001.90	28.35	2.91%	23.13	232.37	1250.10	19.85%	882.90	13.48%	-3.11%	-10.77%
TATAMOTORS	673.25	4.70	0.70%	160.12	1081.94	1179.00	42.90%	606.30	11.04%	1.05%	-31.69%
TATASTEEL	153.98	-1.44	-0.93%	245.89	379.87	184.60	16.59%	122.62	25.57%	13.39%	1.78%
TCS	3604.00	-47.20	-1.29%	20.52	741.46	4592.25	21.52%	3457.00	4.25%	0.60%	-4.94%
TECHM	1415.00	-8.90	-0.63%	16.41	232.94	1807.70	21.72%	1162.95	21.67%	-10.67%	13.57%
TITAN	3062.00	-25.65	-0.83%	7.78	239.64	3867.00	20.82%	2985.05	2.58%	-3.47%	-17.87%
TRENT	5306.05	-116.25	-2.14%	15.36	829.51	8345.00	36.42%	3843.00	38.07%	9.32%	39.92%
ULTRACEMCO	11481.10	-118.50	-1.02%	2.81	324.07	12145.35	5.47%	9250.00	24.12%	5.80%	20.53%
WIPRO	262.50	-9.70	-3.56%	142.83	378.32	324.60	19.13%	208.50	25.90%	-6.56%	-42.37%
ZOMATO	201.20	-5.08	-2.46%	748.35	1529.78	304.70	33.97%	146.30	37.53%	-8.58%	14.95%

## Disclaimer / Disclosures

### ANALYST CERTIFICATION

I, Mrs. Vaishali Parekh B.com, Research Analyst, author and the name subscribed to this report, hereby certify that all of the views expressed in this research report accurately reflect our views about the subject issuer(s) or securities. We also certify that no part of our compensation was, is, or will be directly or indirectly related to the specific recommendation(s) or view(s) in this report.

Terms & conditions and other disclosures:

Prabhudas Lilladher Pvt. Ltd, Mumbai, India (hereinafter referred to as "PL") is engaged in the business of Stock Broking, Portfolio Manager, Depository Participant and distribution for third party financial products. PL is a subsidiary of Prabhudas Lilladher Advisory Services Pvt Ltd. which has its various subsidiaries engaged in business of commodity broking, investment banking, financial services (margin funding) and distribution of third party financial/other products, details in respect of which are available at [www.plindia.com](http://www.plindia.com)

This document has been prepared by the Research Division of PL and is meant for use by the recipient only as information and is not for circulation. This document is not to be reported or copied or made available to others without prior permission of PL. It should not be considered or taken as an offer to sell or a solicitation to buy or sell any security.

The information contained in this report has been obtained from sources that are considered to be reliable. However, PL has not independently verified the accuracy or completeness of the same. Neither PL nor any of its affiliates, its directors or its employees accepts any responsibility of whatsoever nature for the information, statements and opinion given, made available or expressed herein or for any omission therein.

Recipients of this report should be aware that past performance is not necessarily a guide to future performance and value of investments can go down as well. The suitability or otherwise of any investments will depend upon the recipient's particular circumstances and, in case of doubt, advice should be sought from an independent expert/advisor.

Either PL or its affiliates or its directors or its employees or its representatives or its clients or their relatives may have position(s), make market, act as principal or engage in transactions of securities of companies referred to in this report and they may have used the research material prior to publication.

PL may from time to time solicit or perform investment banking or other services for any company mentioned in this document.

PL is registered as Research Analyst under Securities and Exchange Board of India (Research Analysts) Regulations, 2014 PL submits that no material disciplinary action has been taken on us by any Regulatory Authority impacting Equity Research Analysis activities.

PL or its research analysts or its associates or his relatives do not have any financial interest in the subject company.

PL or its research analysts or its associates or his relatives do not have actual/beneficial ownership of one per cent or more securities of the subject company at the end of the month immediately preceding the date of publication of the research report.

PL or its research analysts or its associates or his relatives do not have any material conflict of interest at the time of publication of the research report.

PL or its associates might have received compensation from the subject company in the past twelve months.

PL or its associates might have managed or co-managed public offering of securities for the subject company in the past twelve months or mandated by the subject company for any other assignment in the past twelve months.

PL or its associates might have received any compensation for investment banking or merchant banking or brokerage services from the subject company in the past twelve months.

PL or its associates might have received any compensation for products or services other than investment banking or merchant banking or brokerage services from the subject company in the past twelve months PL or its associates might have received any compensation or other benefits from the subject company or third party in connection with the research report.

PL encourages independence in research report preparation and strives to minimize conflict in preparation of research report. PL or its analysts did not receive any compensation or other benefits from the subject Company or third party in connection with the preparation of the research report. PL or its Research Analysts do not have any material conflict of interest at the time of publication of this report.

It is confirmed that Mrs.Vaishali Parekh B.com, Research Analyst of this report has not received any compensation from the companies mentioned in the report in the preceding twelve months compensation of our Research Analysts is not based on any specific merchant banking, investment banking or brokerage service transactions.

The Research analysts for this report certifies that all of the views expressed in this report accurately reflect his or her personal views about the subject company or companies and its or their securities, and no part of his or her compensation was, is or will be, directly or indirectly related to specific recommendations or views expressed in this report.

The research analysts for this report has not served as an officer, director or employee of the subject company PL or its research analysts have not engaged in market making activity for the subject company

Our sales people, traders, and other professionals or affiliates may provide oral or written market commentary or trading strategies to our clients that reflect opinions that are contrary to the opinions expressed herein, and our proprietary trading and investing businesses may make investment decisions that are inconsistent with the recommendations expressed herein. In reviewing these materials, you should be aware that any or all of the foregoing, among other things, may give rise to real or potential conflicts of interest.

PL and its associates, their directors and employees may (a) from time to time, have a long or short position in, and buy or sell the securities of the subject company or (b) be engaged in any other transaction involving such securities and earn brokerage or other compensation or act as a market maker in the financial instruments of the subject company or act as an advisor or lender/borrower to the subject company or may have any other potential conflict of interests with respect to any recommendation and other related information and opinions.